



## 4" Non-IC Downlight

### TM-30 Color Rendition Reports

#### 2400K

---

750-2000 lm

#### 2700K

---

750-1250 lm

1500-2000 lm

2500-3500 lm

#### 3000K

---

750-1250 lm

1500-2000 lm

2500-3500 lm

#### 3500K

---

750-1250 lm

1500-2000 lm

2500-3500 lm

#### 4000K

---

750-1250 lm

1500-2000 lm

2500-3500 lm

#### Warm Dim

---

1800K

3000K

#### T1 Tunable White

---

1800K

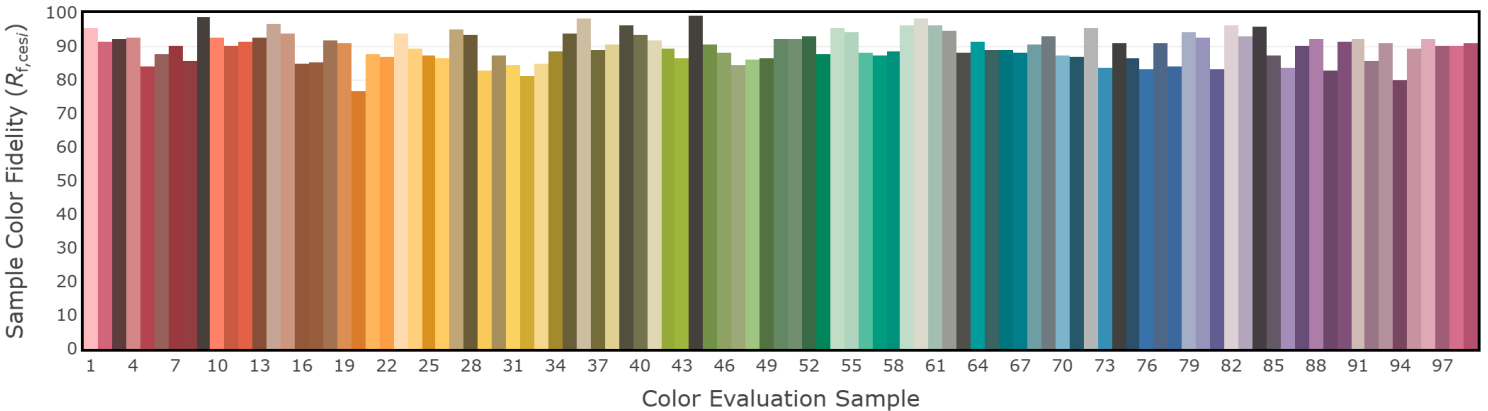
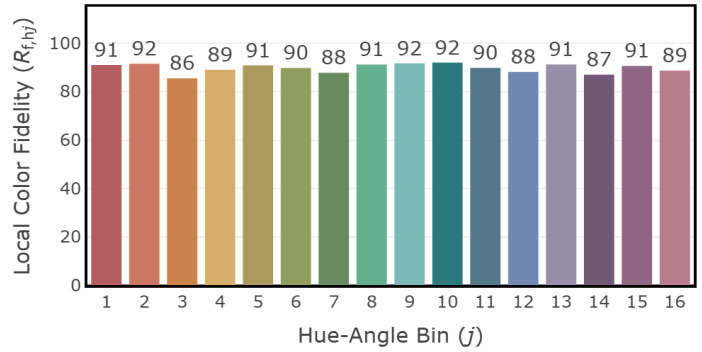
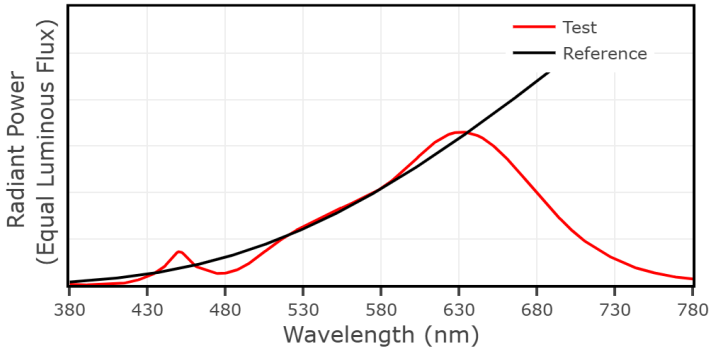
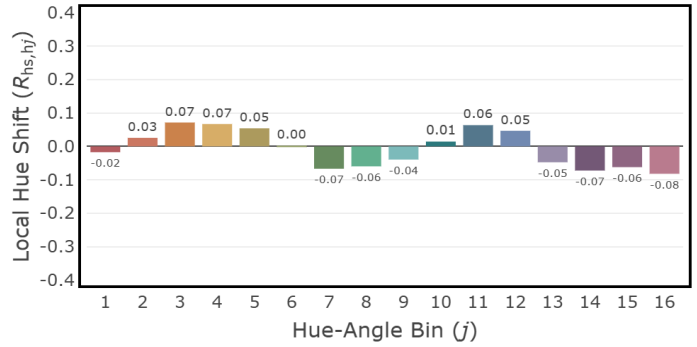
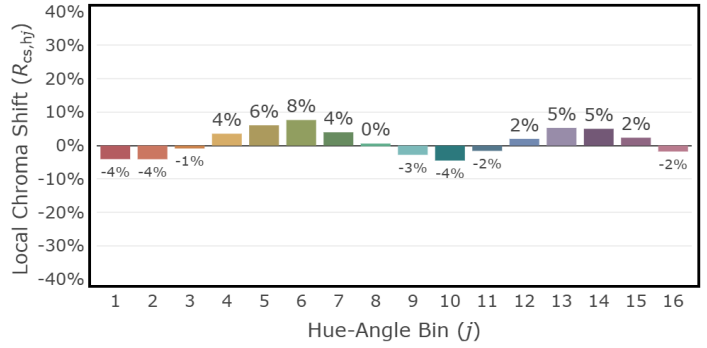
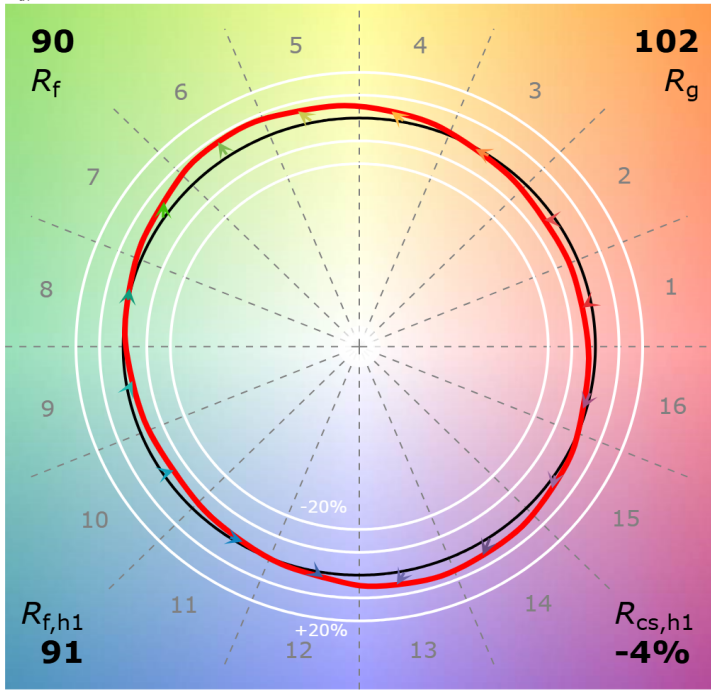
3000K

4000K

## 4" Non-IC Downlight 2400K, 750-2000 lm

CCT: 2364 K  
 $D_{uv}$ : 0.0008

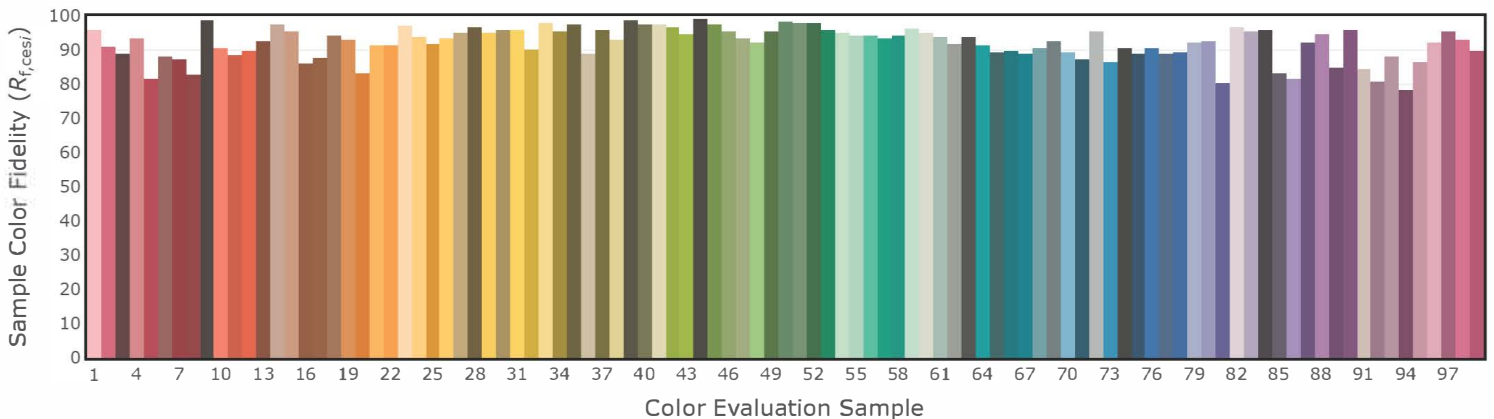
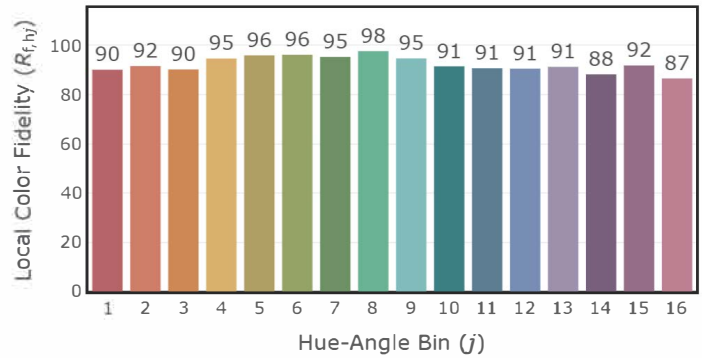
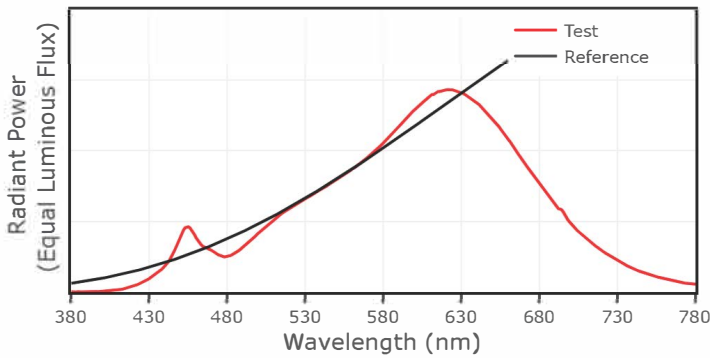
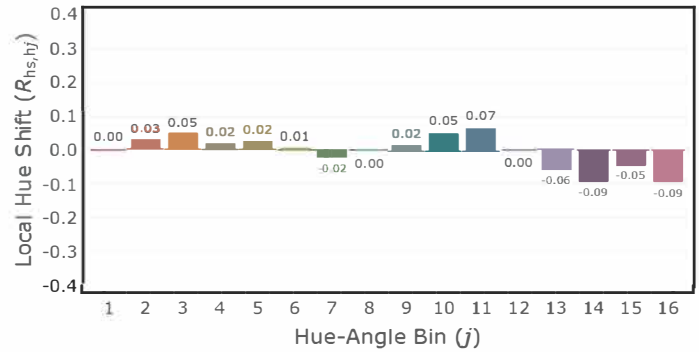
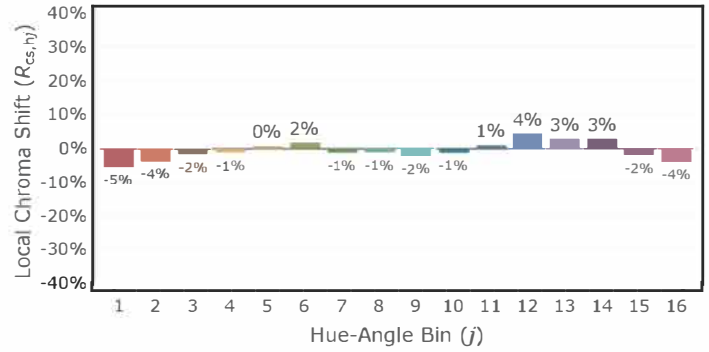
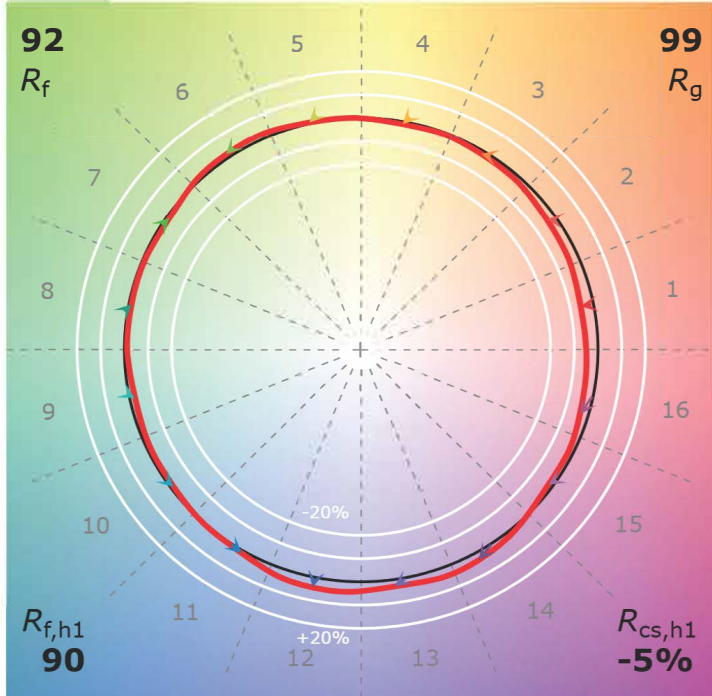
P2 V- F2



## 4" Non-IC Downlight 2700K, 750-1250 lm

CCT: 2666 K  
 $D_{uv}$ : 0.0003

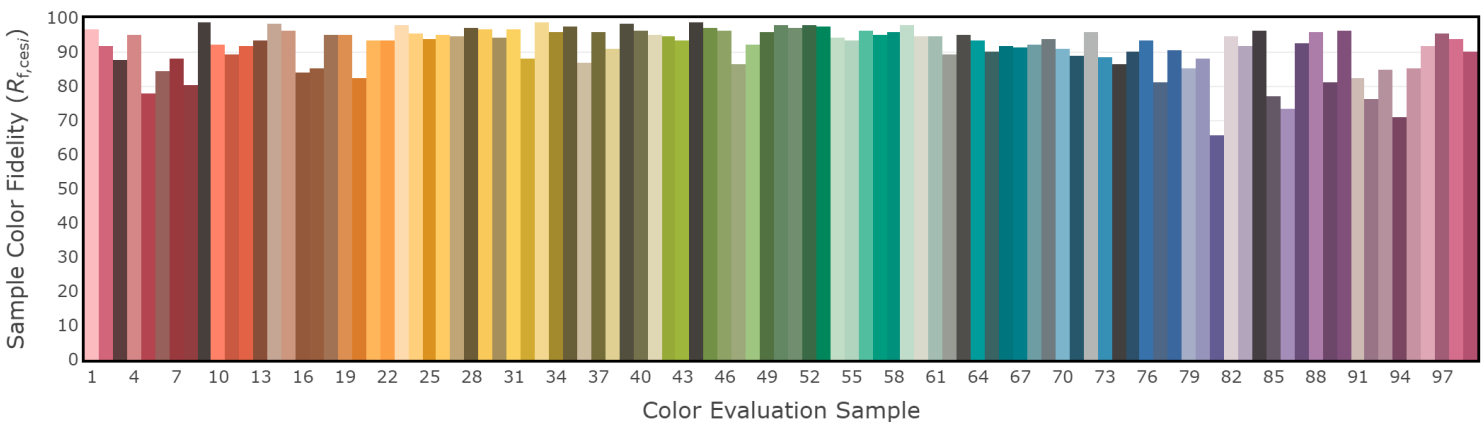
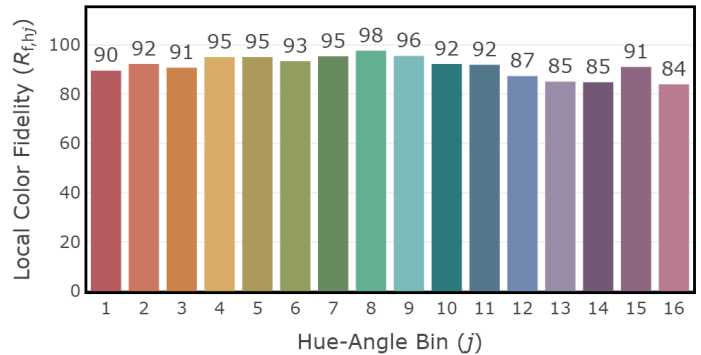
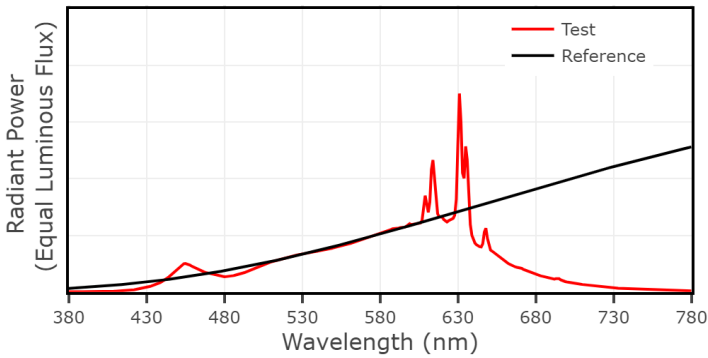
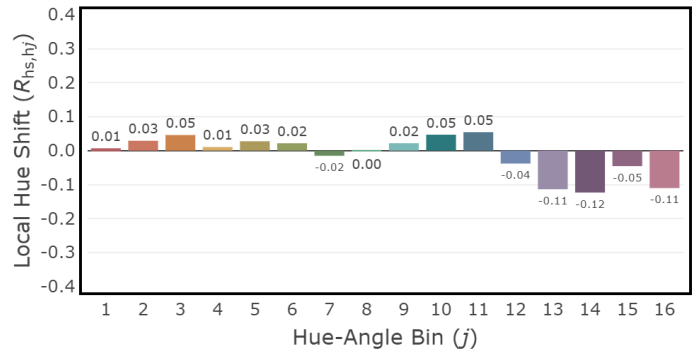
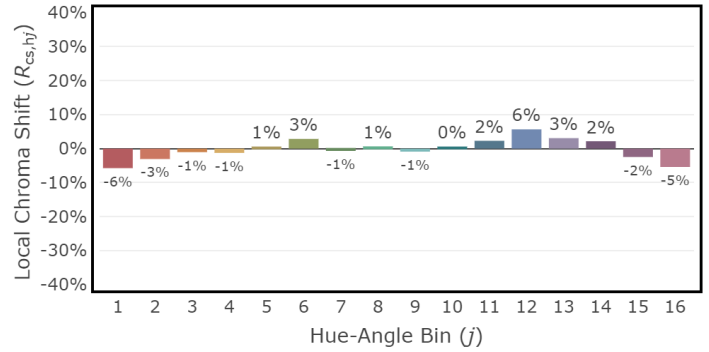
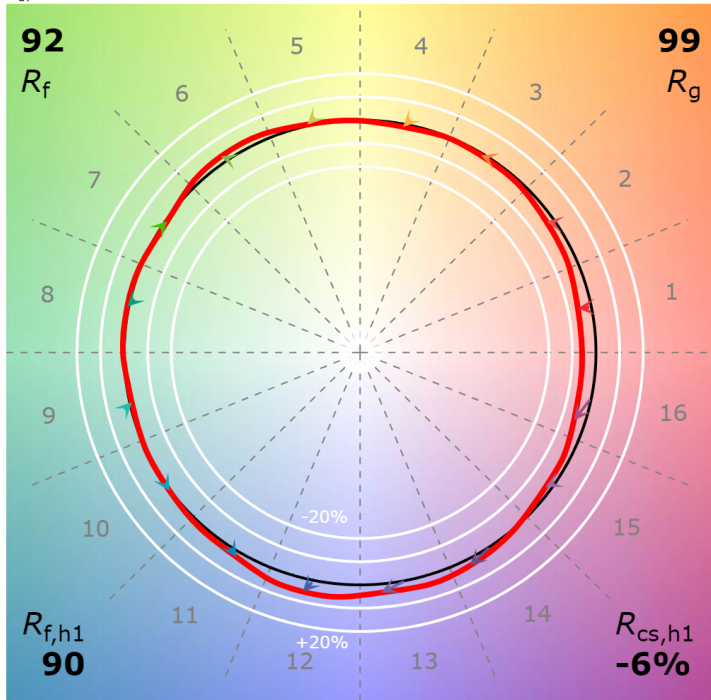
P2 V- F2



## 4" Non-IC Downlight 2700K, 1500-2000 lm

CCT: 2650 K  
 $D_{uv}$ : -0.0012

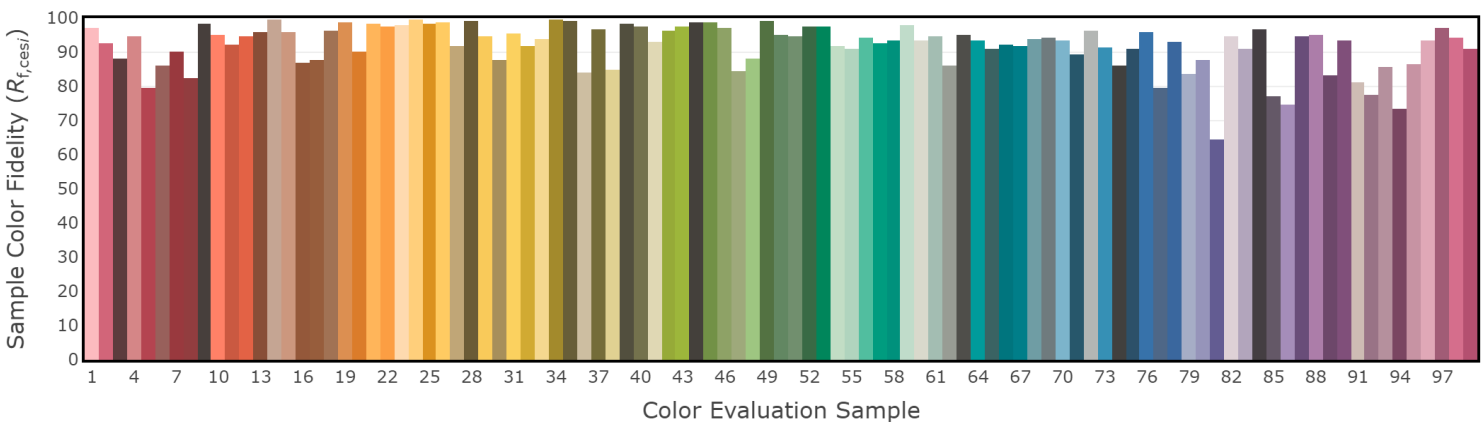
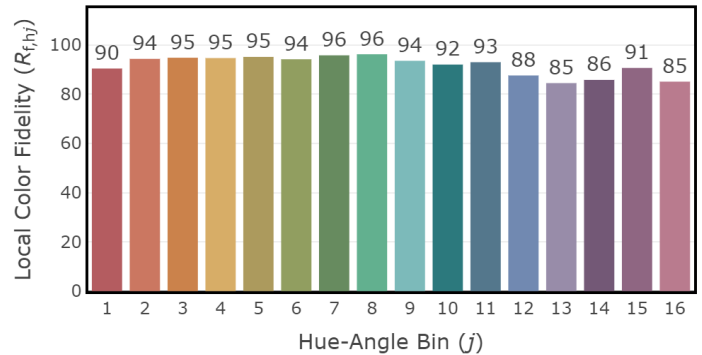
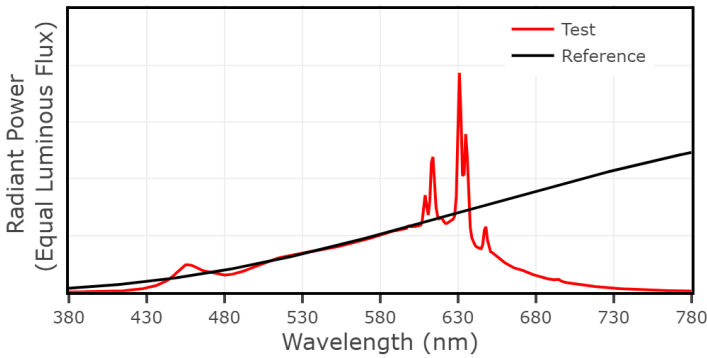
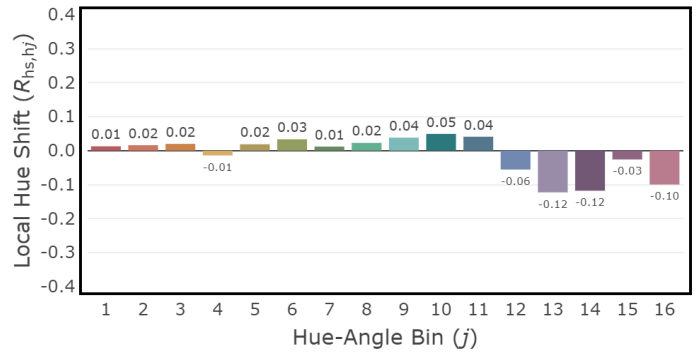
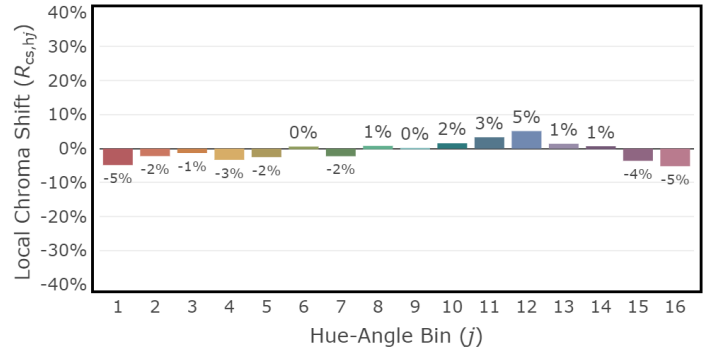
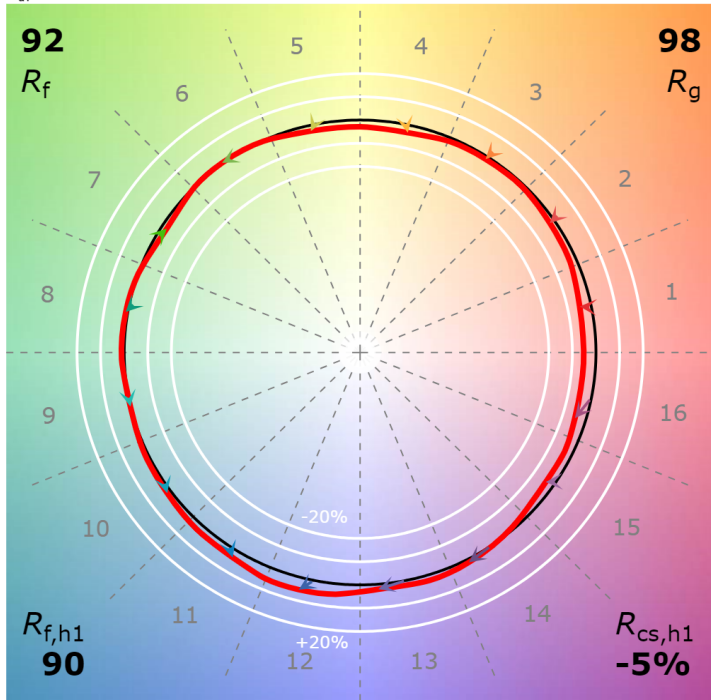
P2 V- F2



## 4" Non-IC Downlight 2700K, 2500-3500 lm

CCT: 2690 K  
 $D_{uv}$ : -0.0000

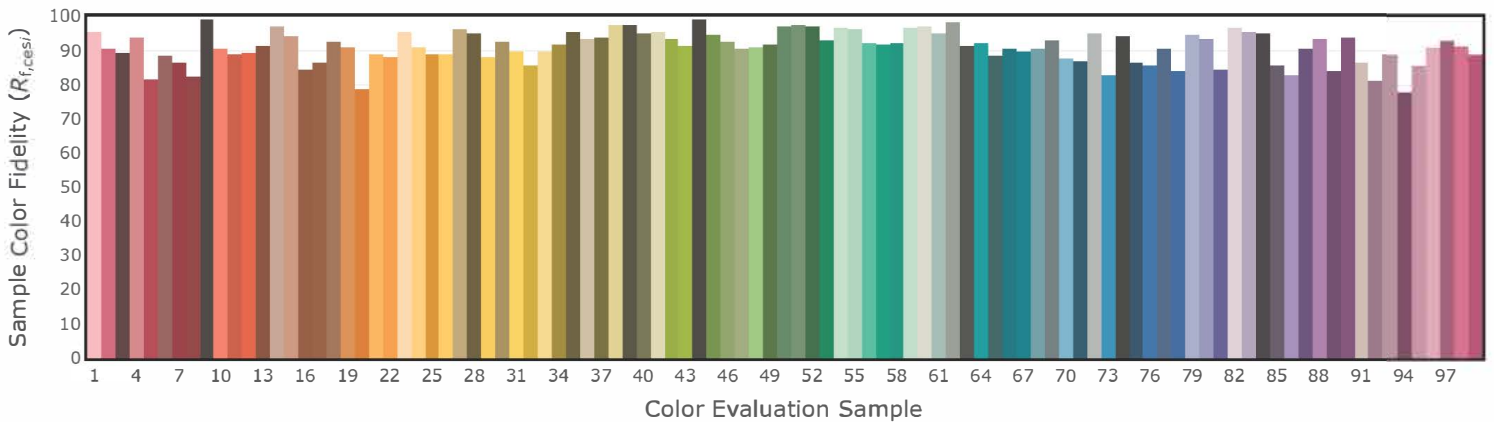
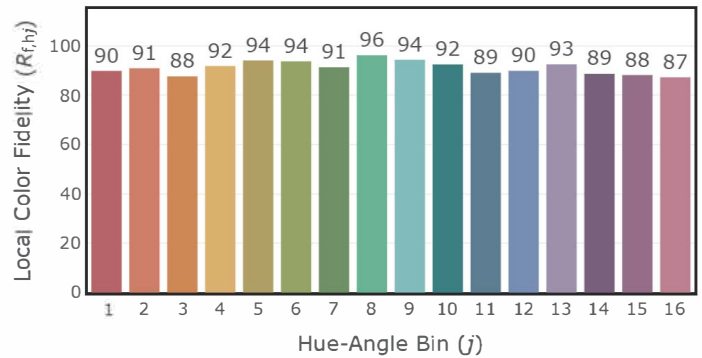
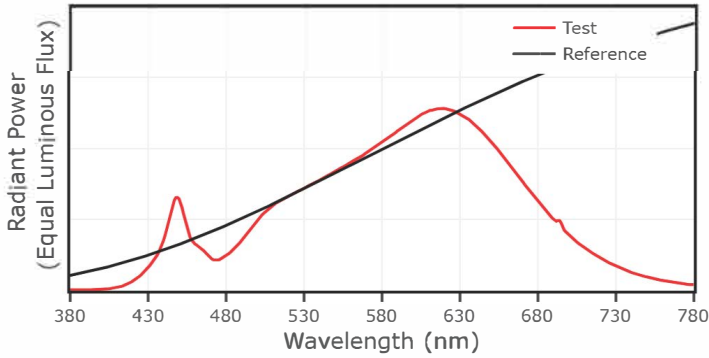
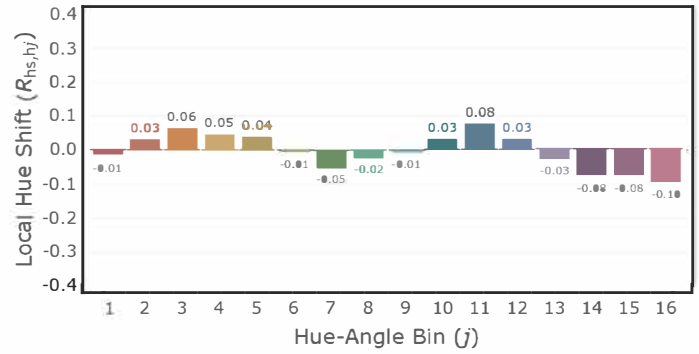
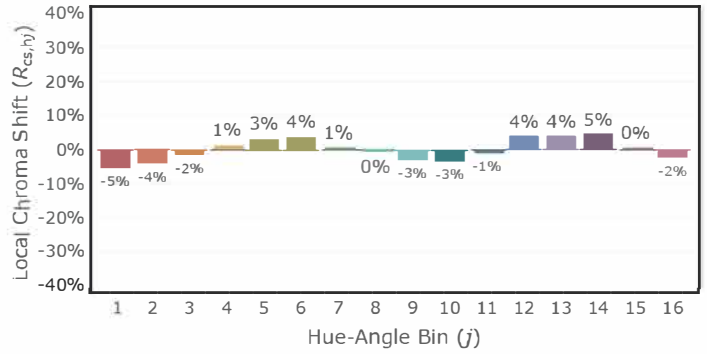
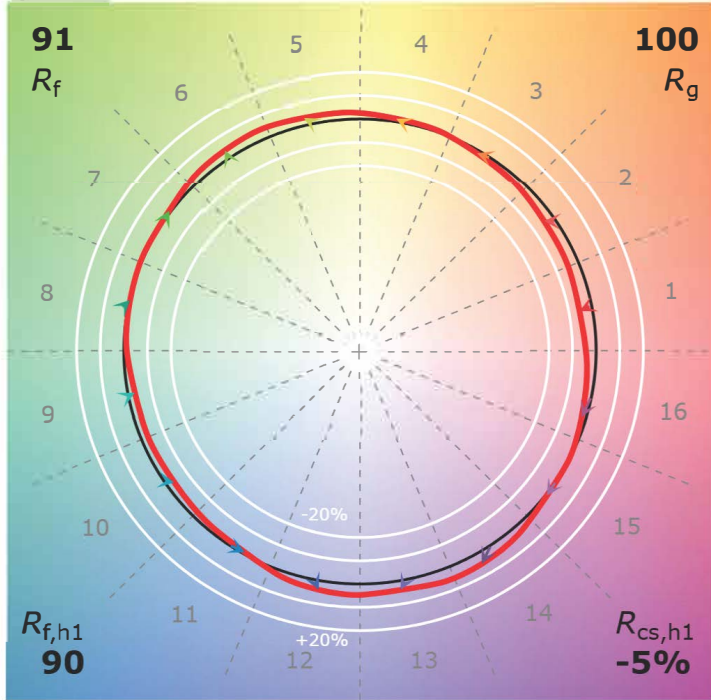
P2 V- F2



## 4" Non-IC Downlight 3000K, 750-1250 lm

CCT: 2999 K  
 $D_{uv}$ : 0.0013

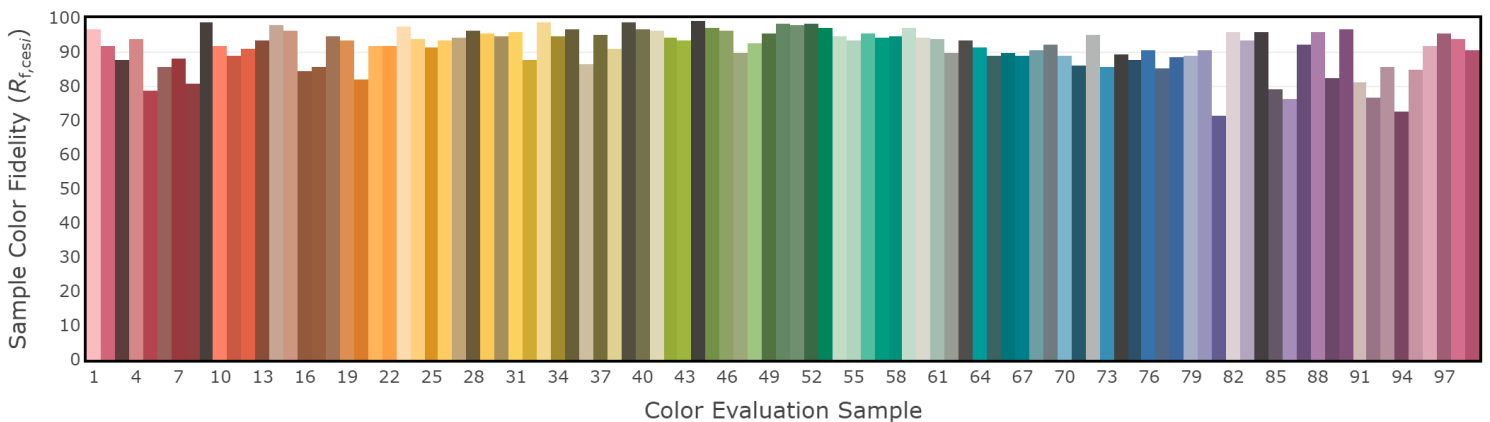
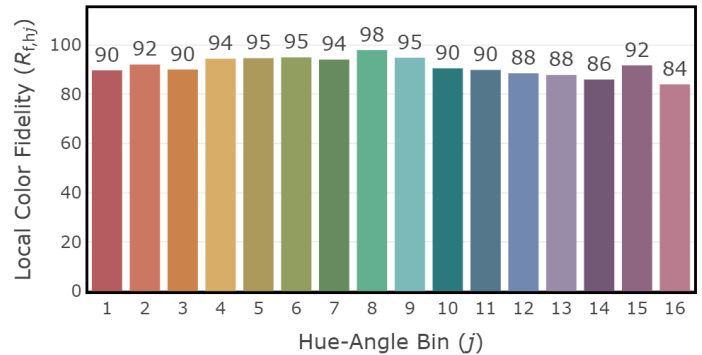
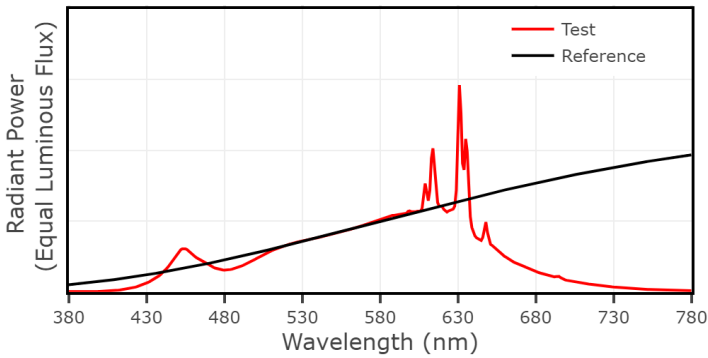
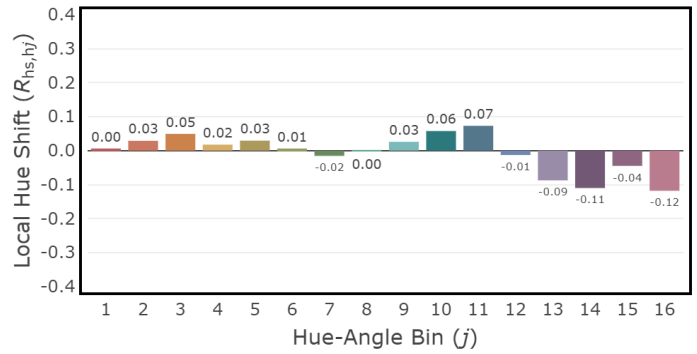
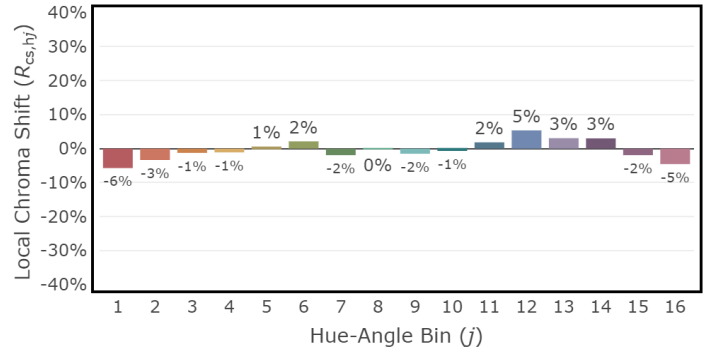
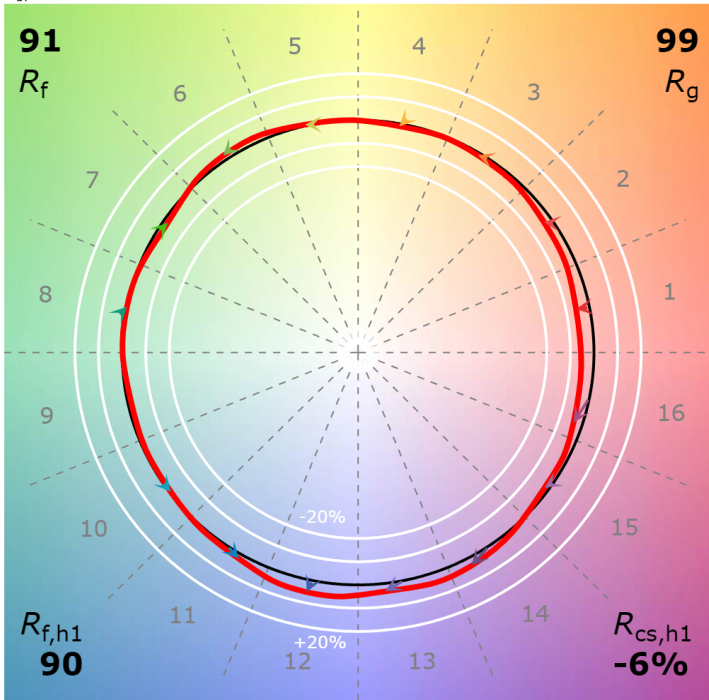
P2 V- F2



## 4" Non-IC Downlight 3000K, 1500-2000 lm

CCT: 2968 K  
 $D_{uv}$ : -0.0009

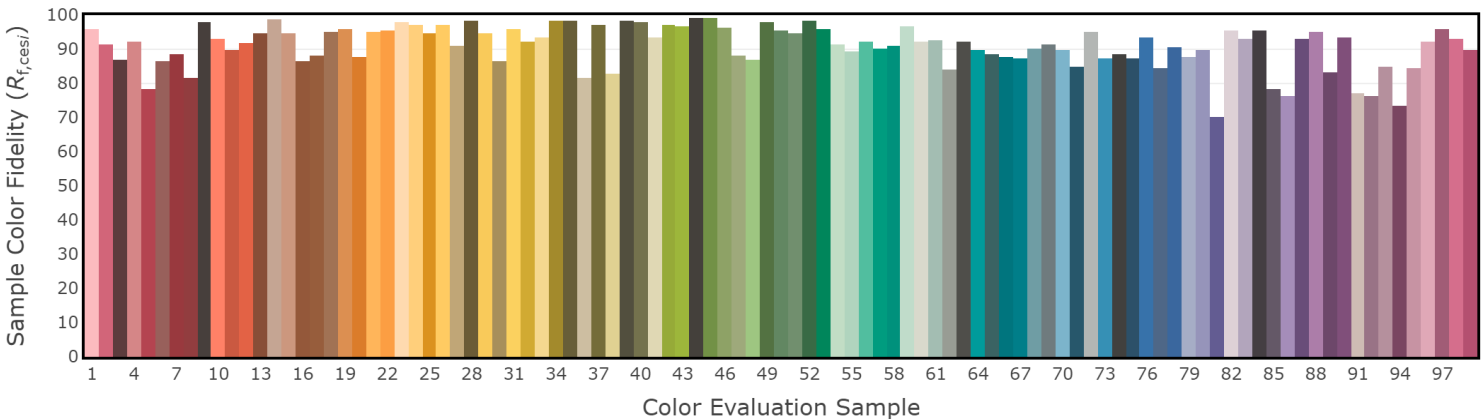
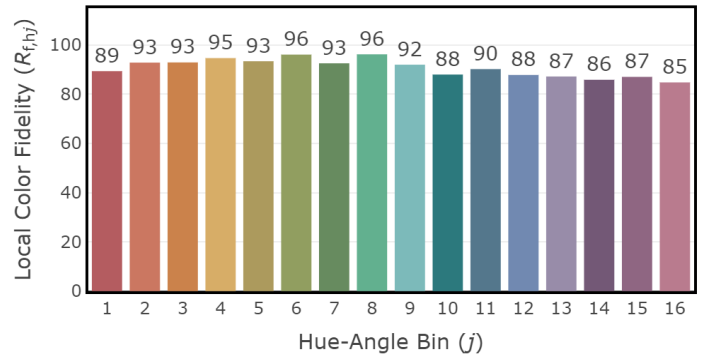
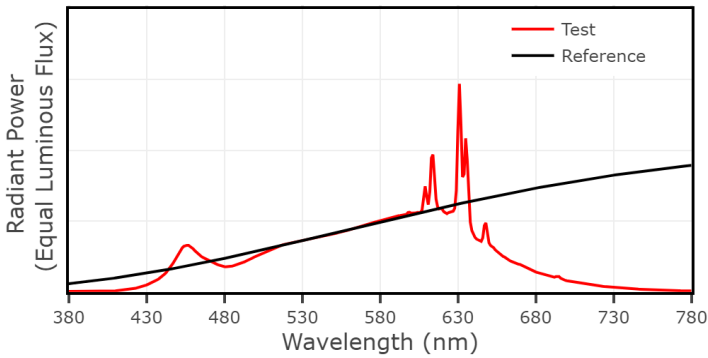
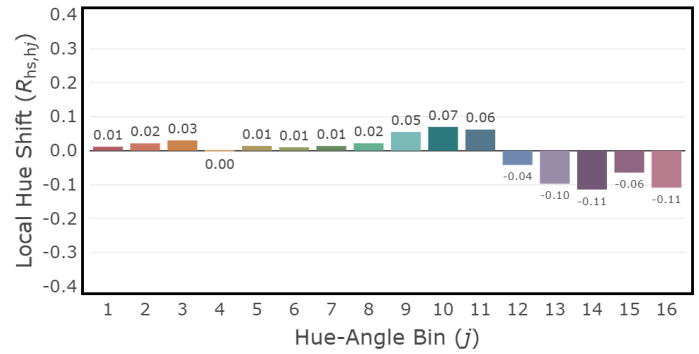
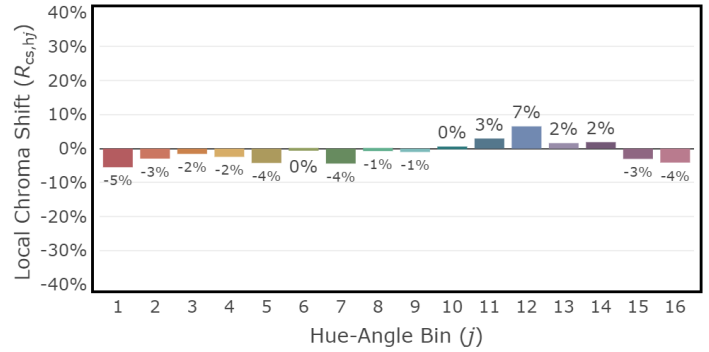
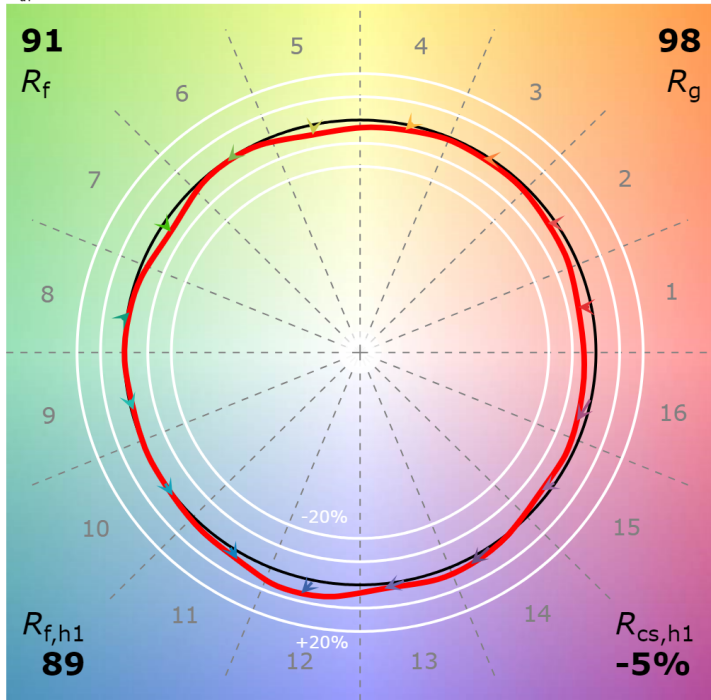
P2 V- F2



## 4" Non-IC Downlight 3000K, 2500-3500 lm

CCT: 3071 K  
 $D_{UV}$ : 0.0000

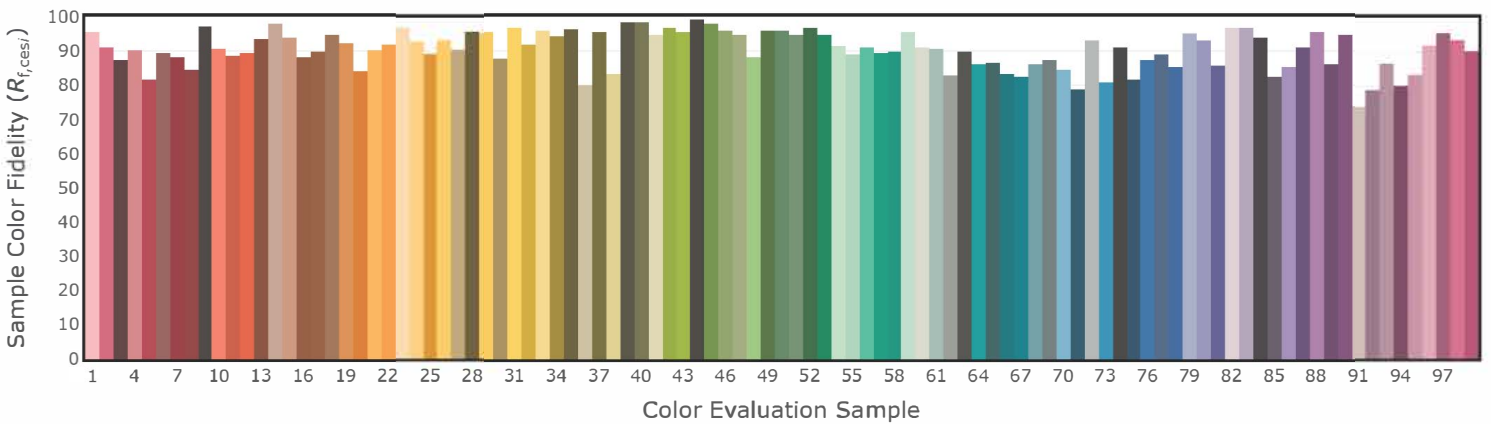
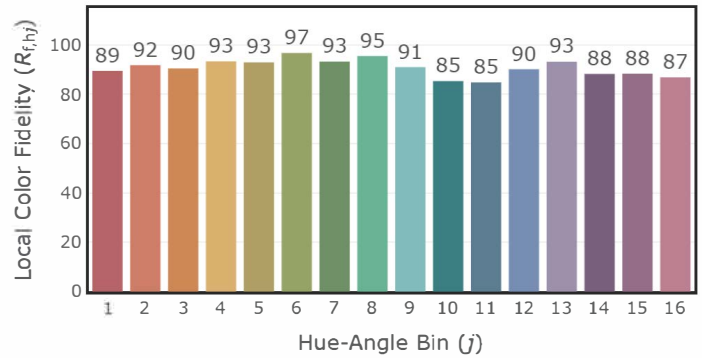
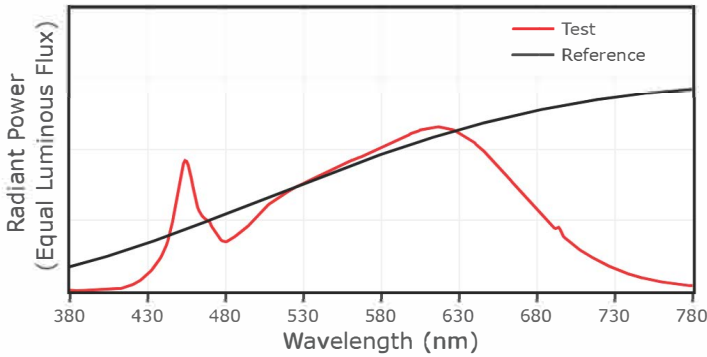
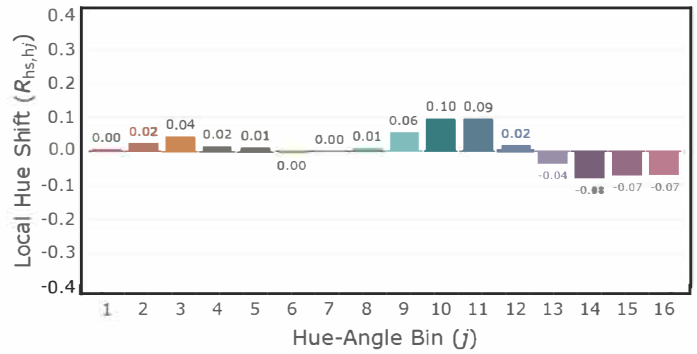
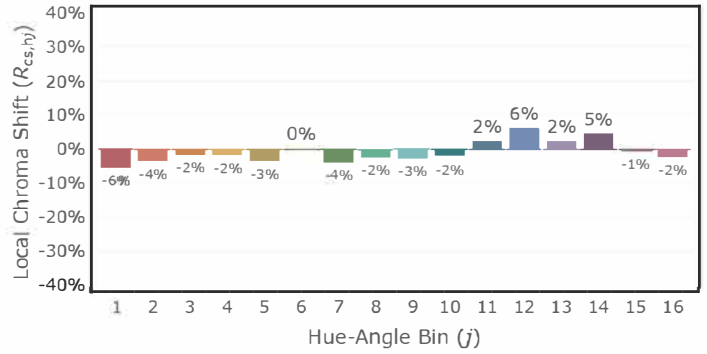
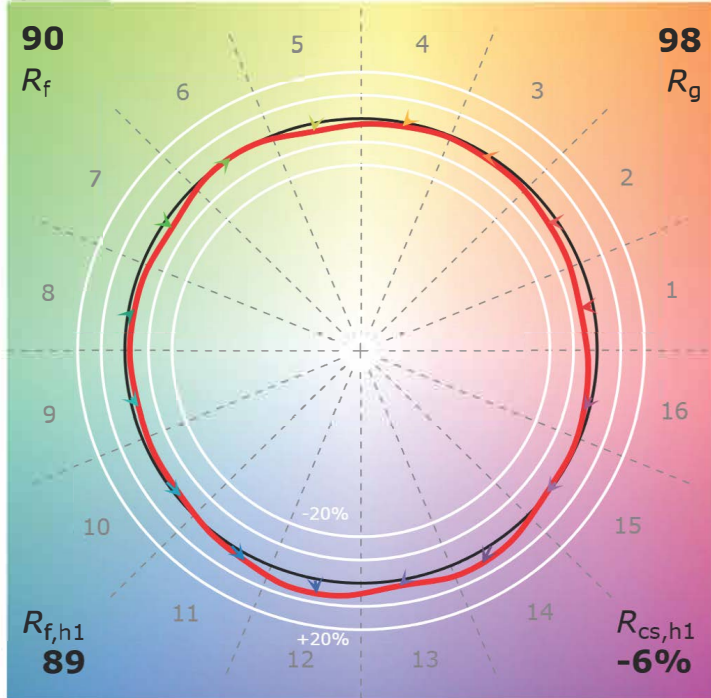
P2 V- F3



## 4" Non-IC Downlight 3500K, 750-1250 lm

CCT: 3404 K  
 $D_{uv}$ : 0.0005

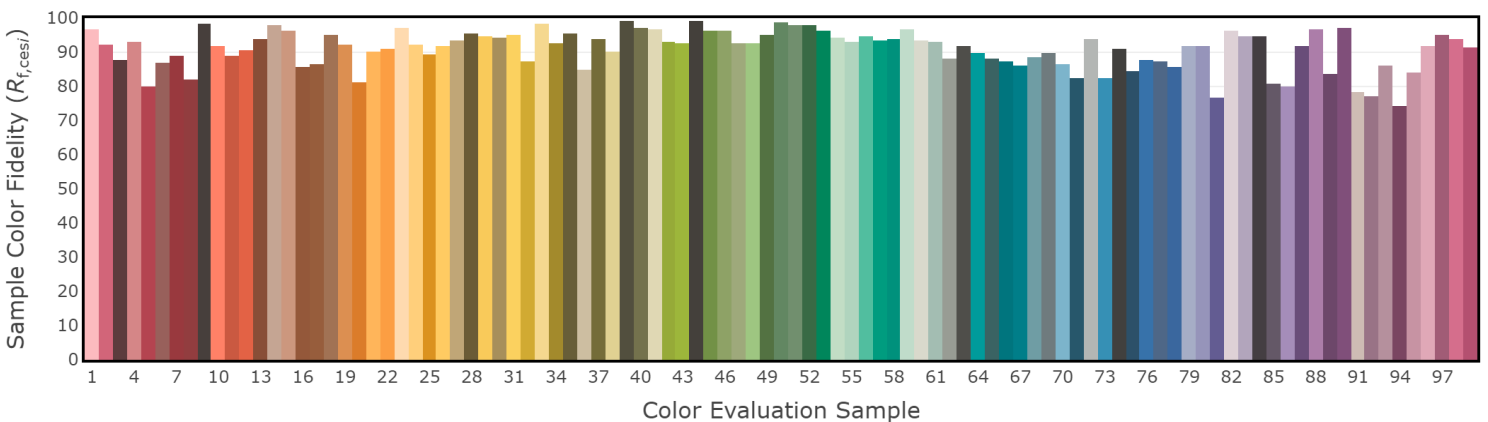
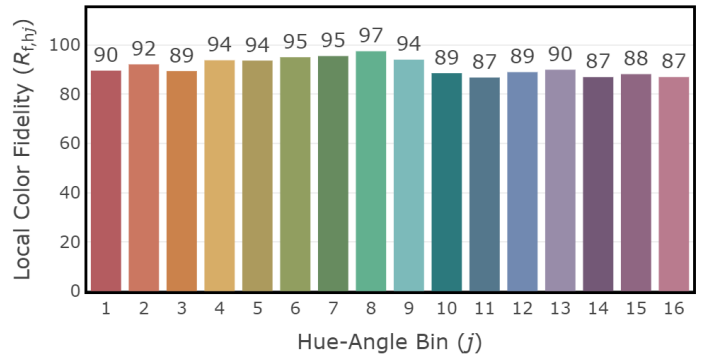
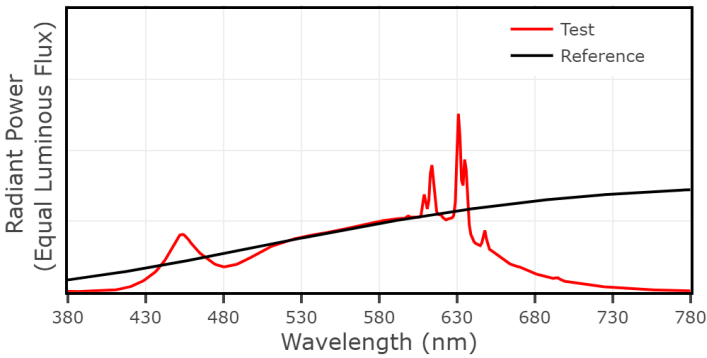
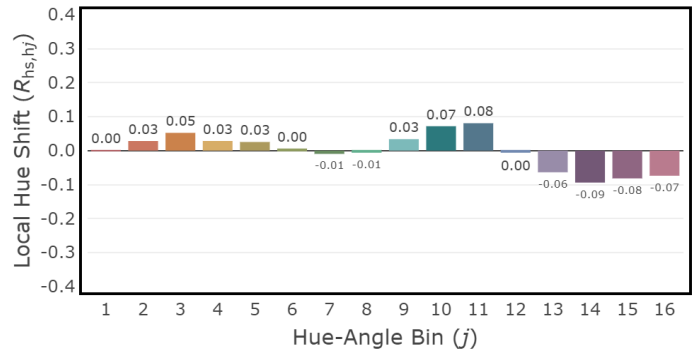
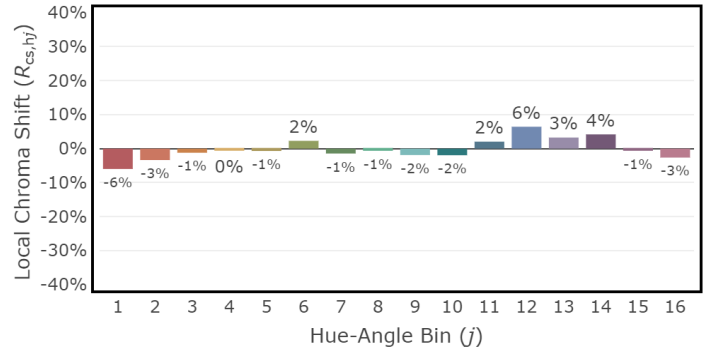
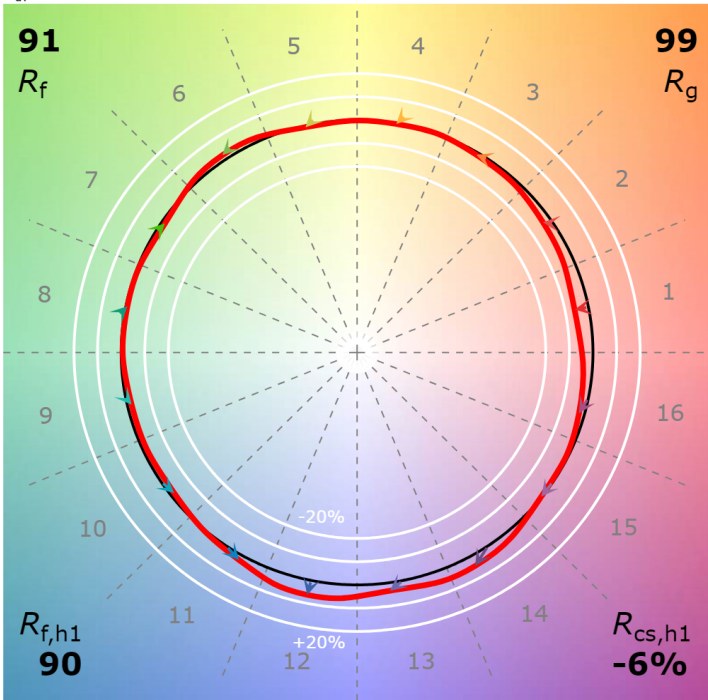
P2 V- F3



## 4" Non-IC Downlight 3500K, 1500-2000 lm

CCT: 3385 K  
 $D_{uv}$ : -0.0014

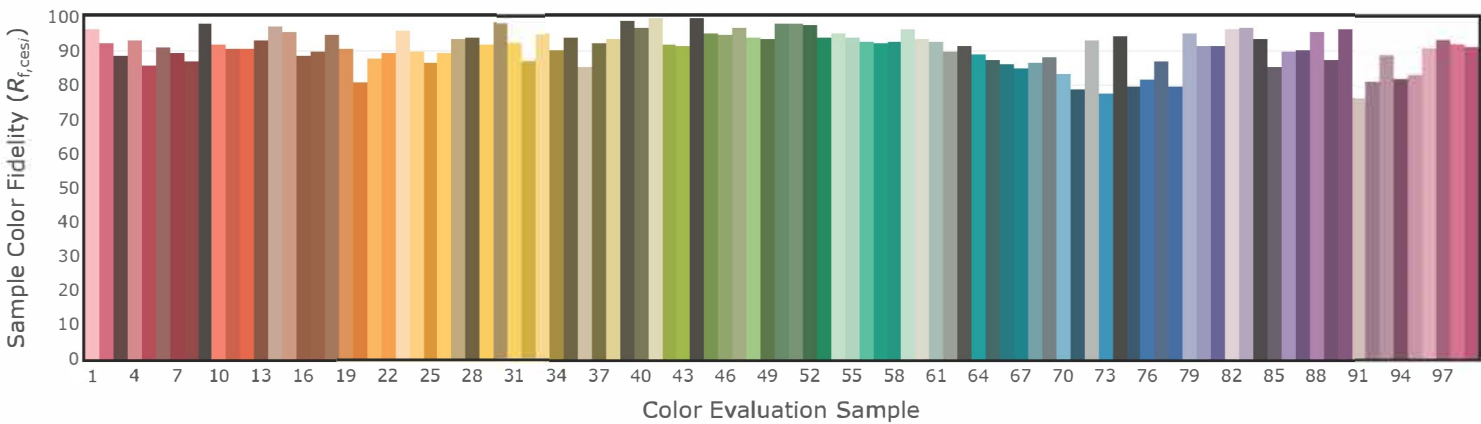
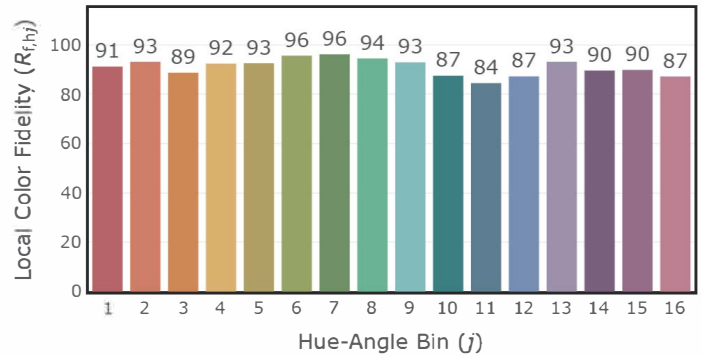
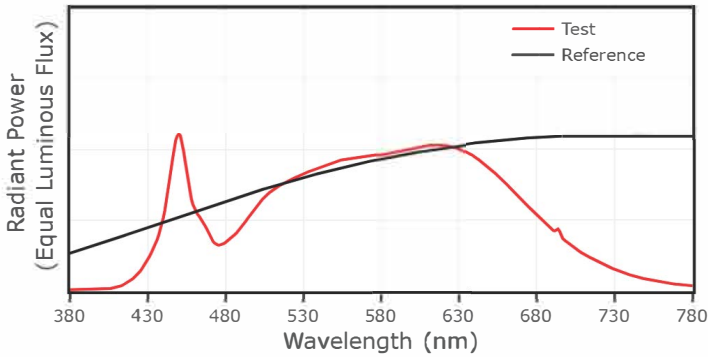
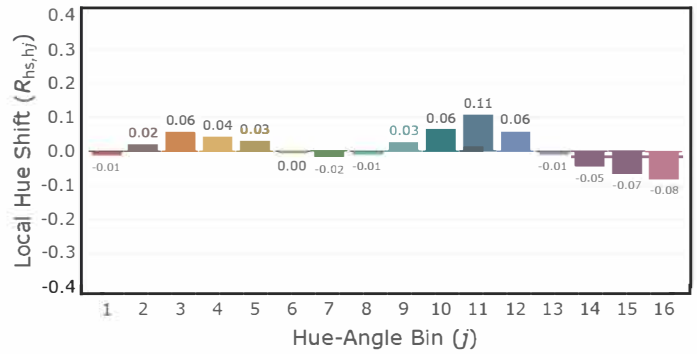
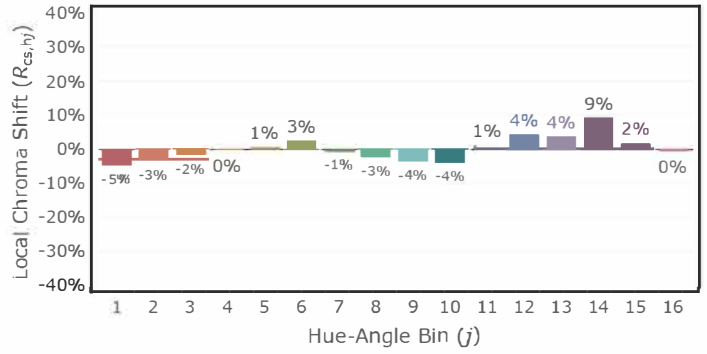
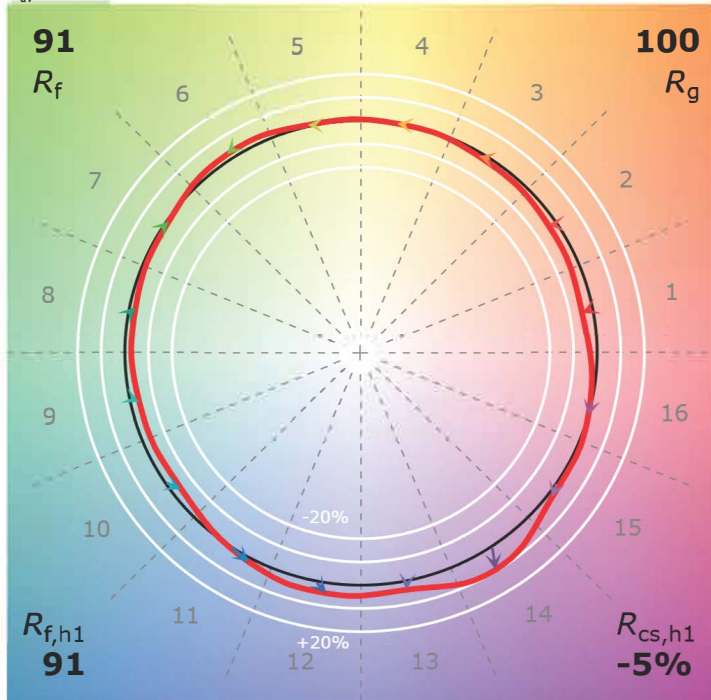
P2 V- F2



## 4" Non-IC Downlight 4000K, 750-1250 lm

CCT: 3887 K  
 $D_{uv}$ : 0.0018

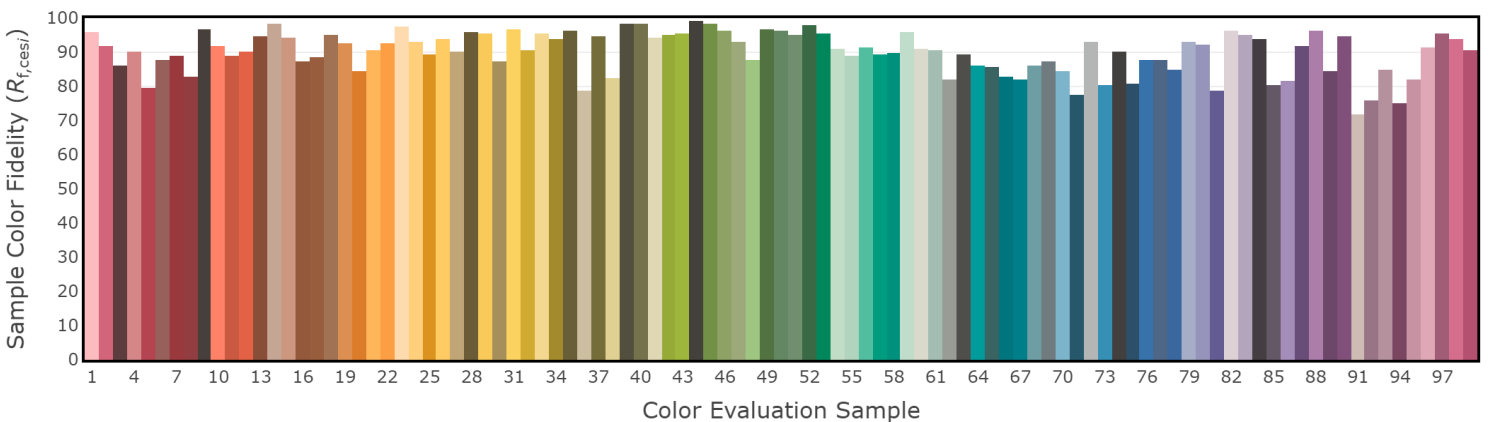
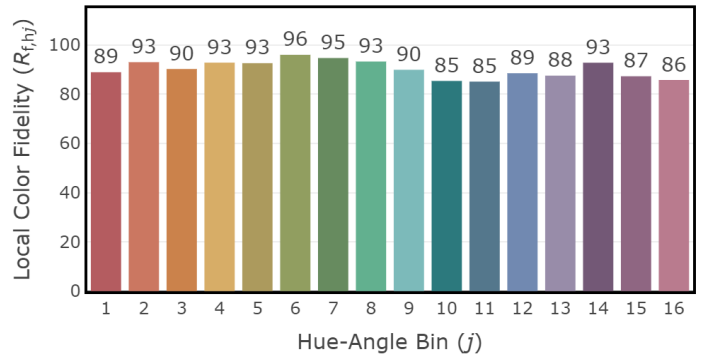
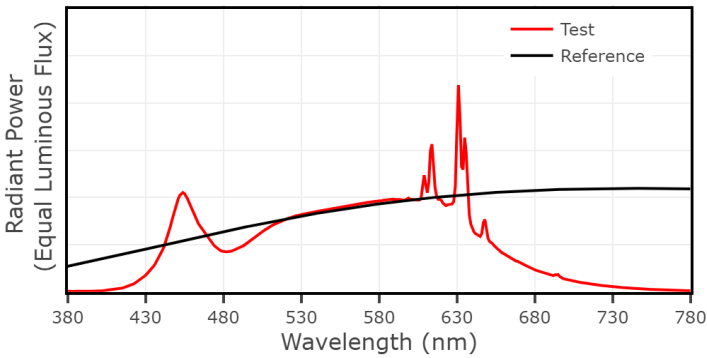
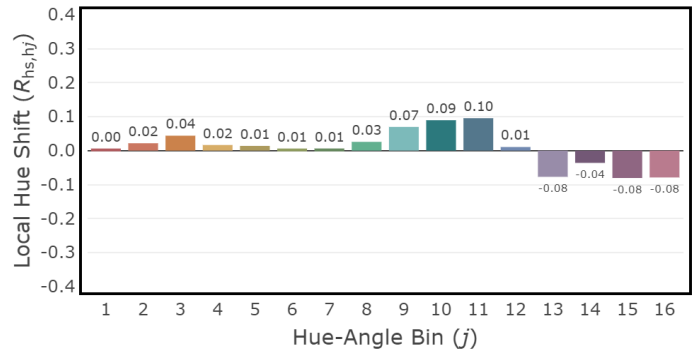
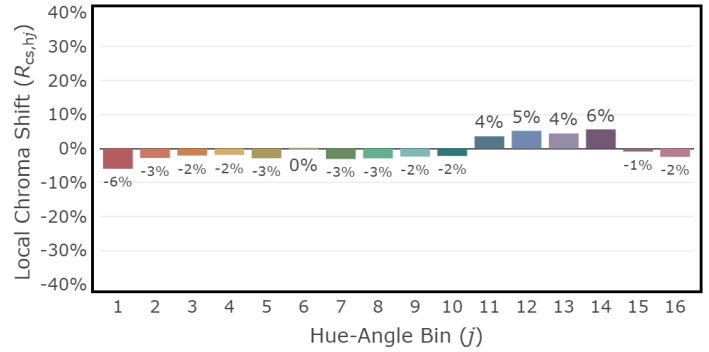
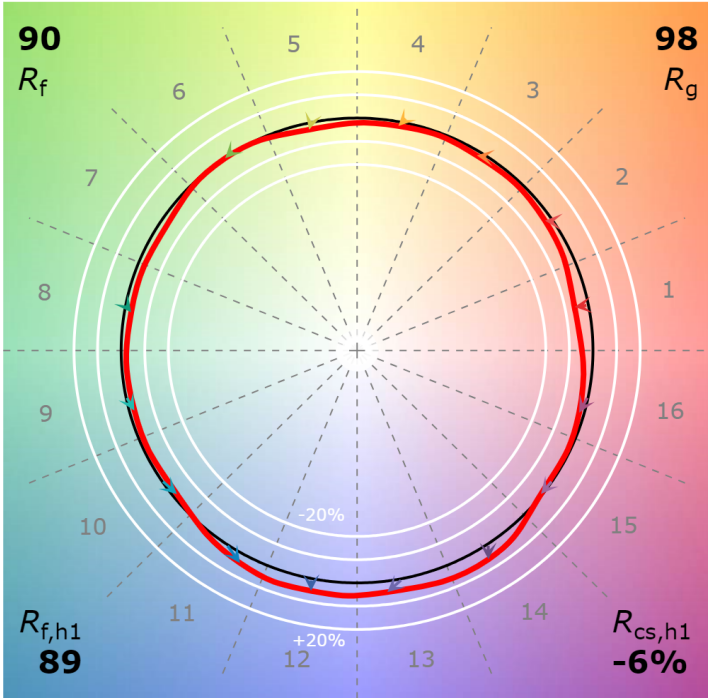
P2 V- F2



## 4" Non-IC Downlight 4000K, 1500-2000 lm

CCT: 3900 K  
 $D_{uv}$ : -0.0002

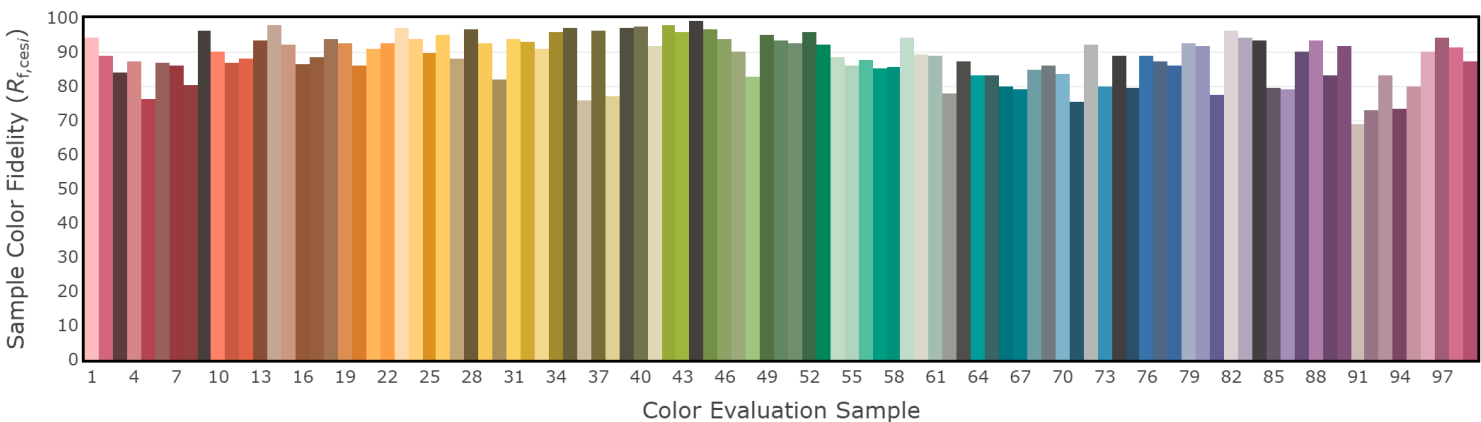
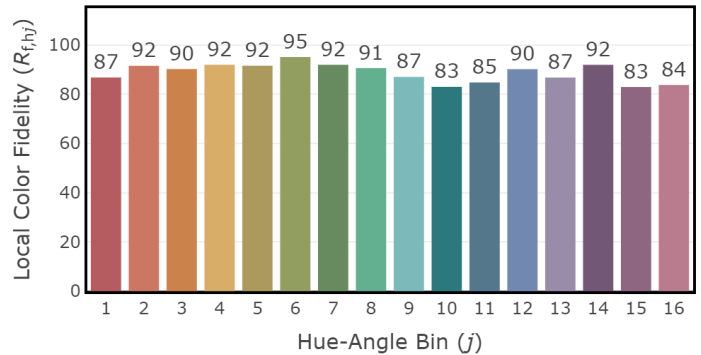
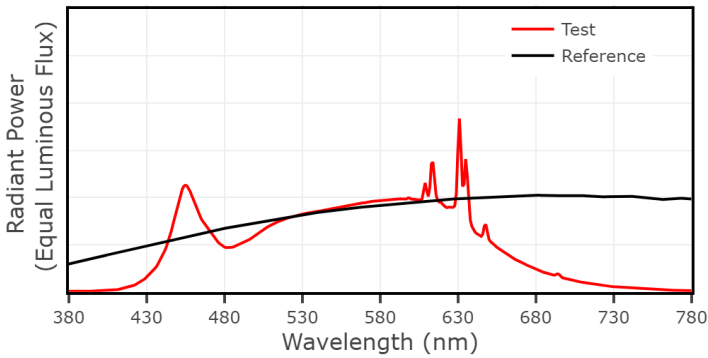
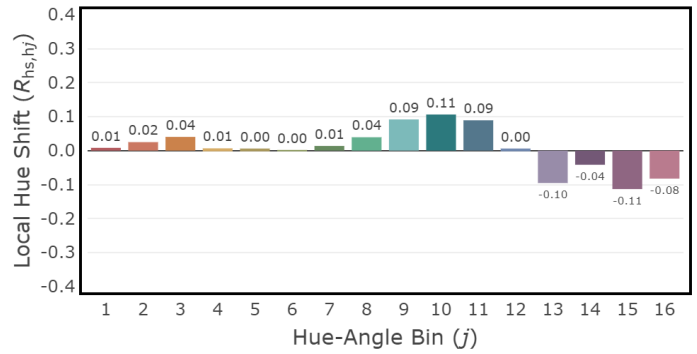
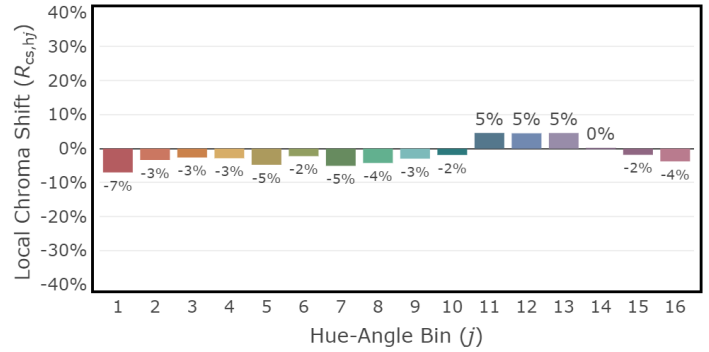
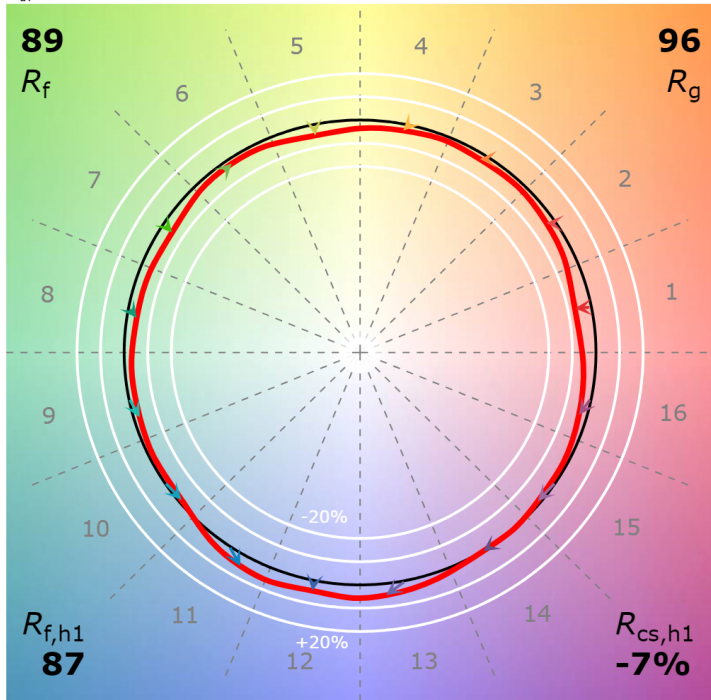
P2 V- F3



## 4" Non-IC Downlight 4000K, 2500-3500 lm

CCT: 4095 K  
 $D_{uv}$ : 0.0013

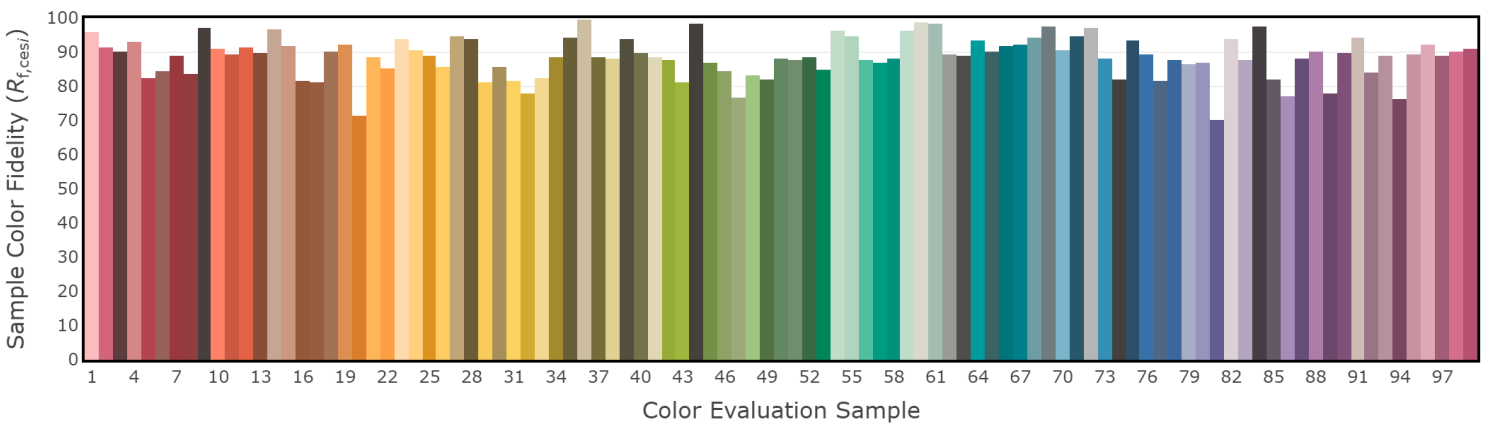
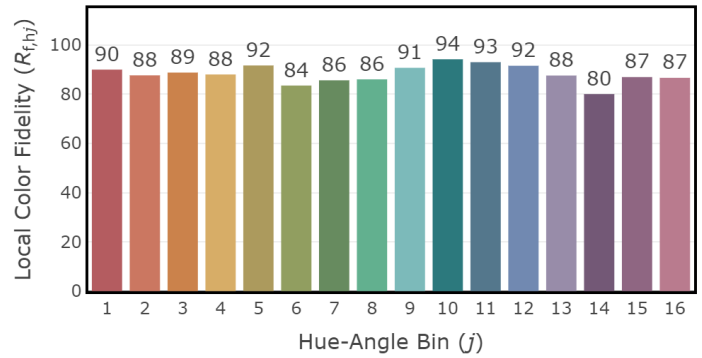
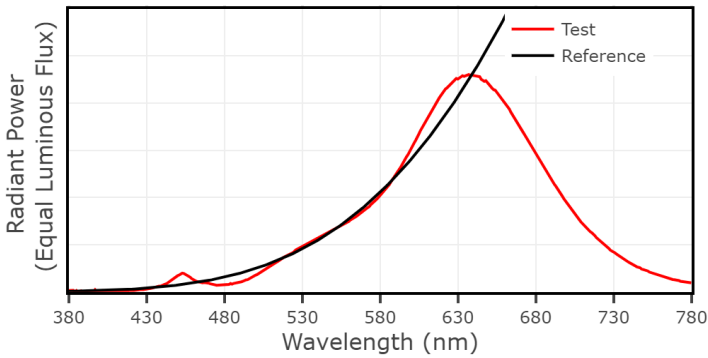
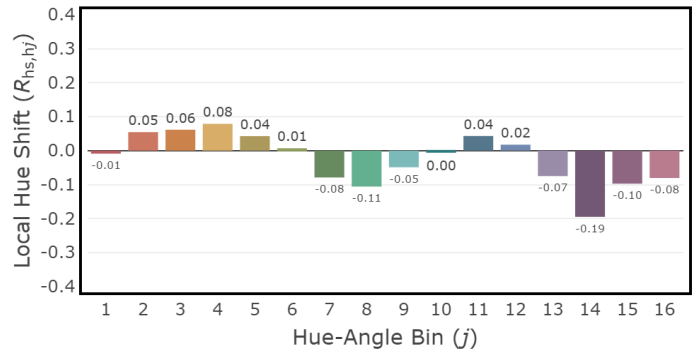
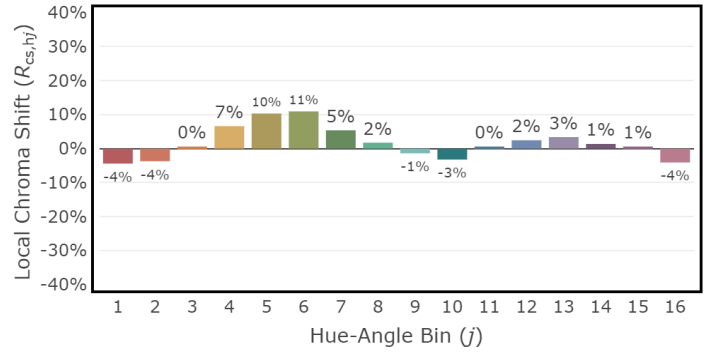
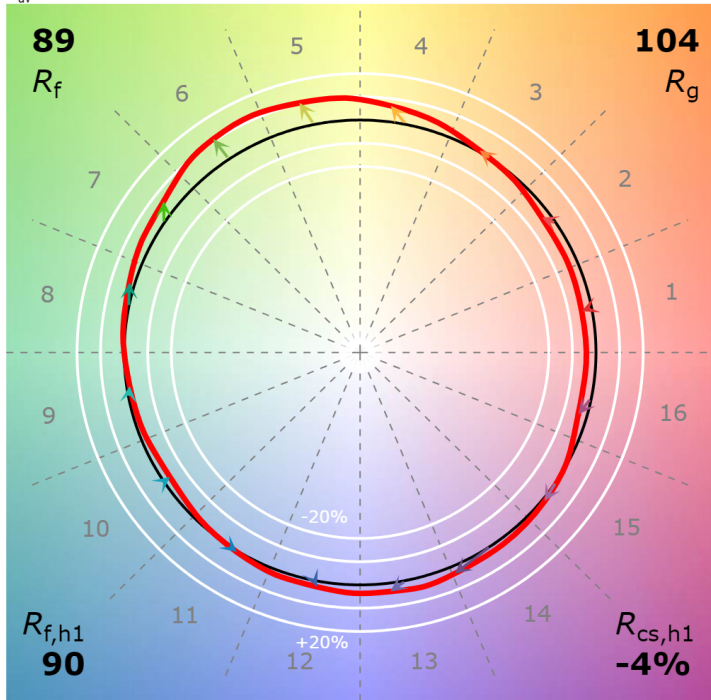
P2 V- F3



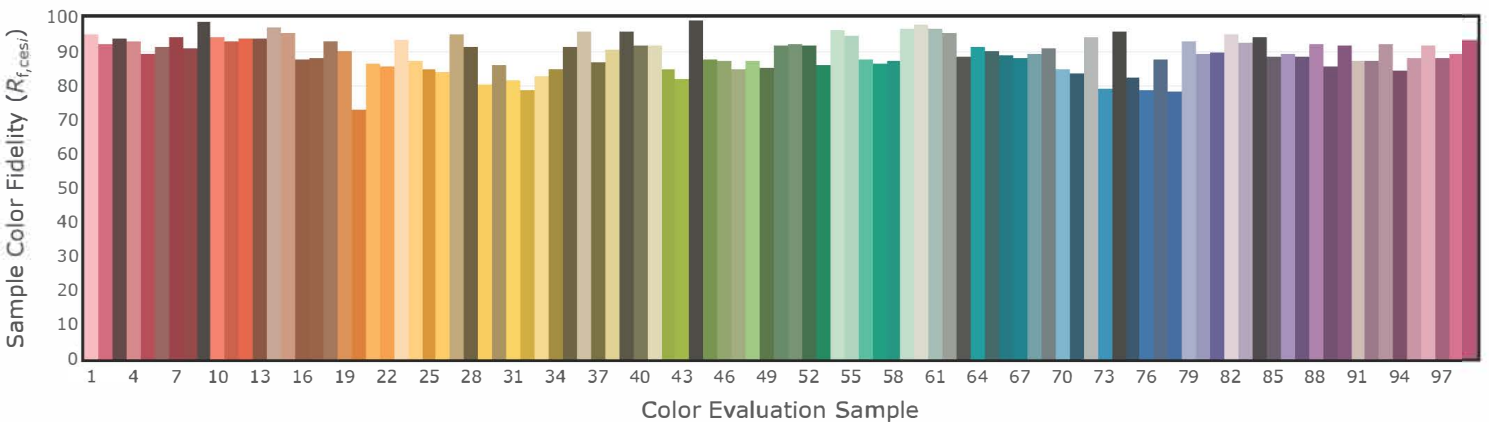
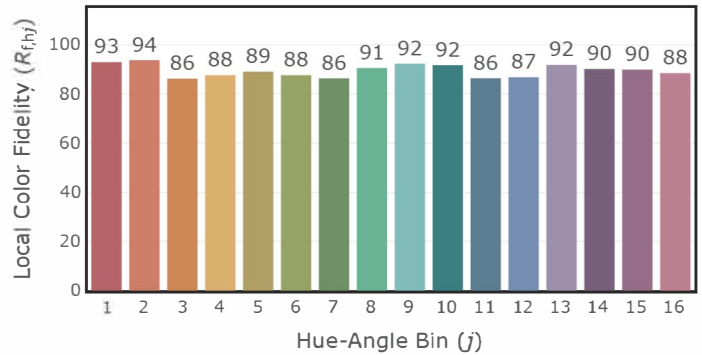
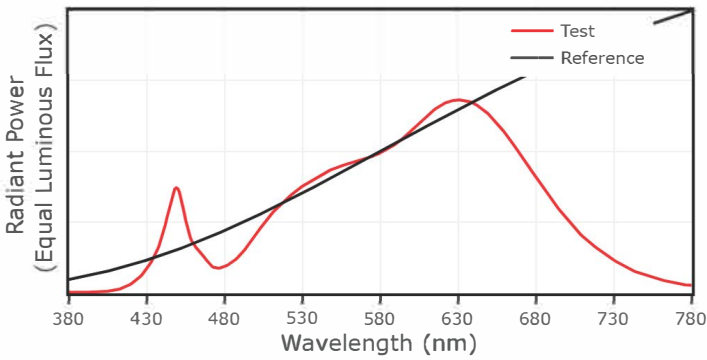
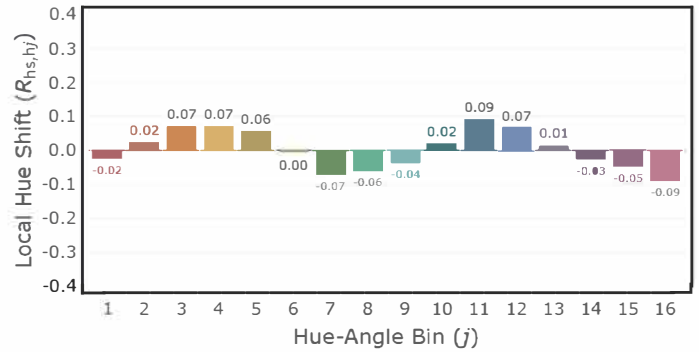
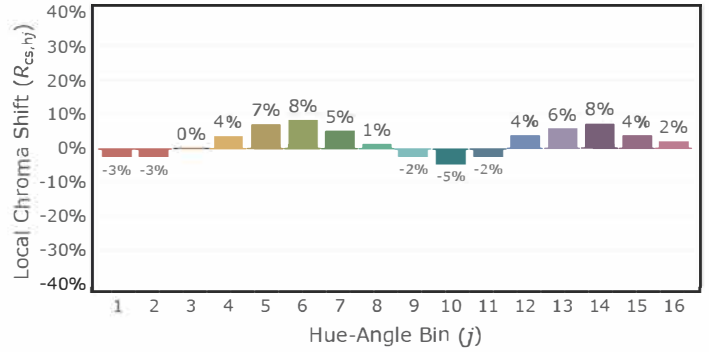
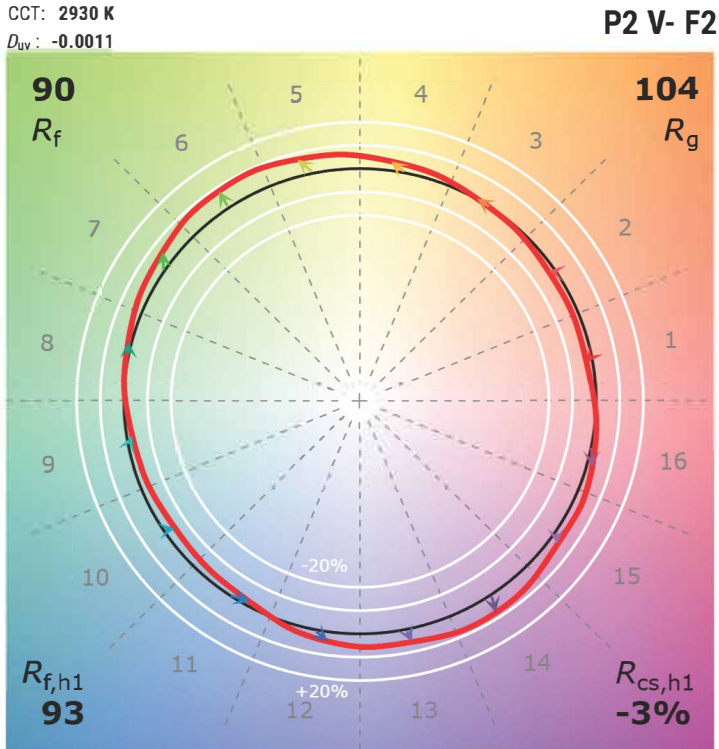
## 4" Non-IC Downlight - Warm Dim 1800K, 45 lm

CCT: 1812 K  
 $D_{uv}$ : -0.0005

P2 V- F3



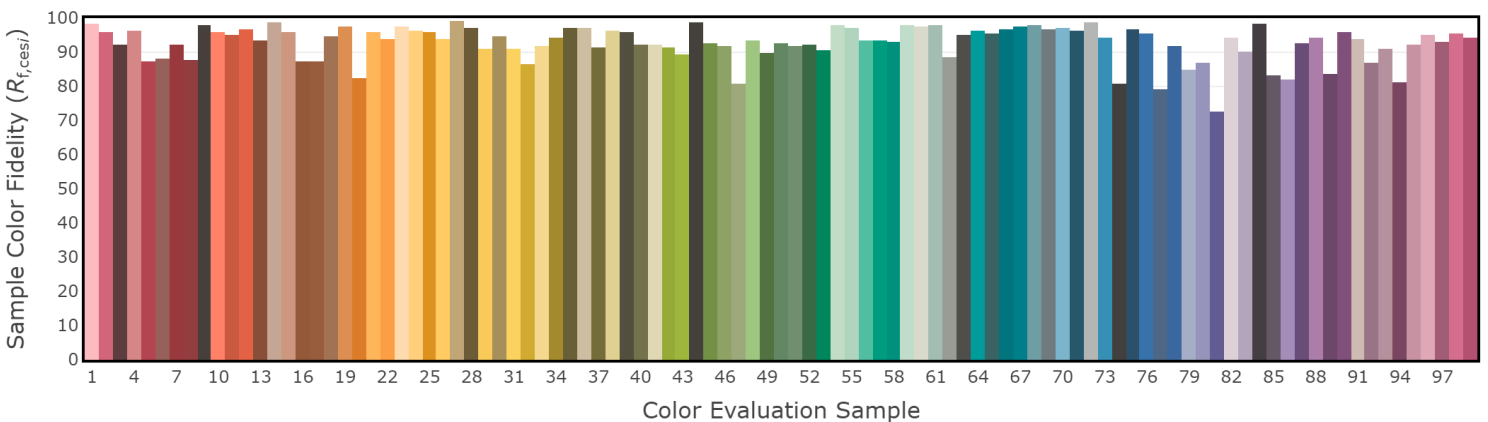
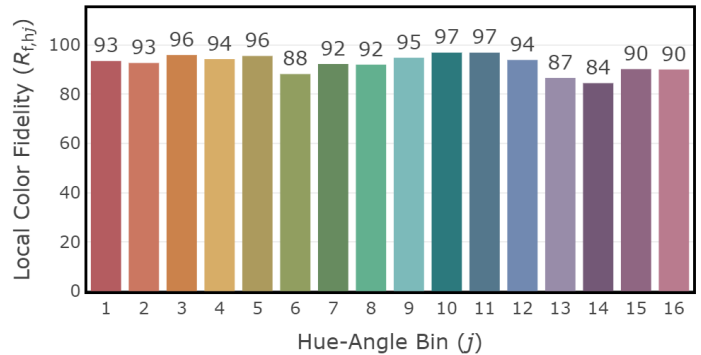
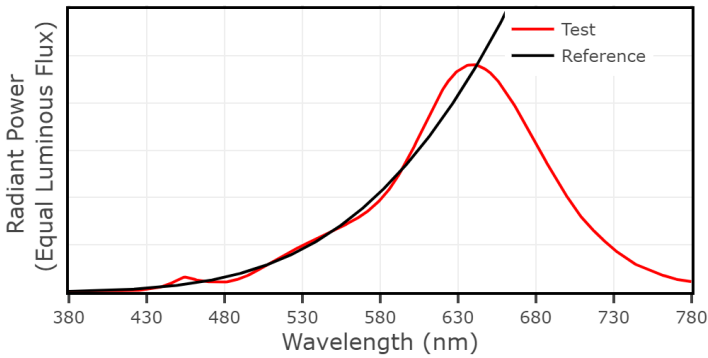
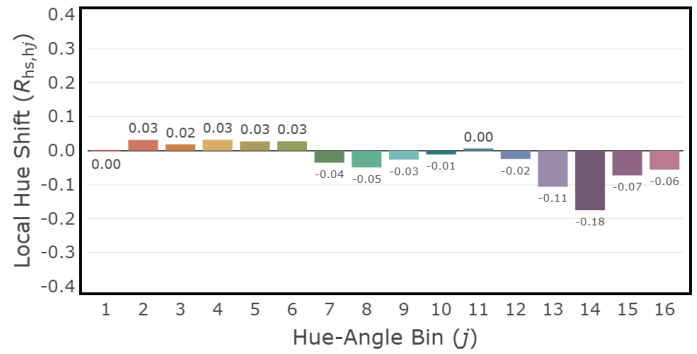
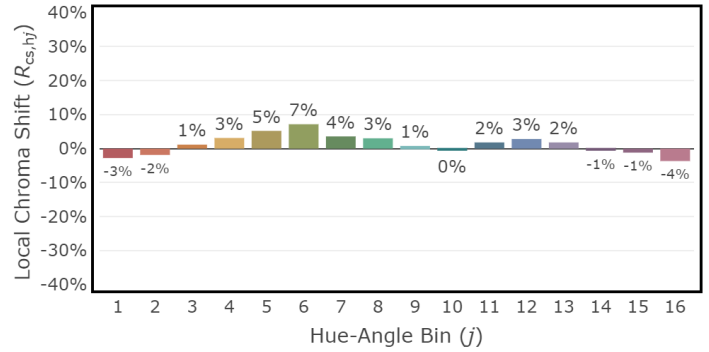
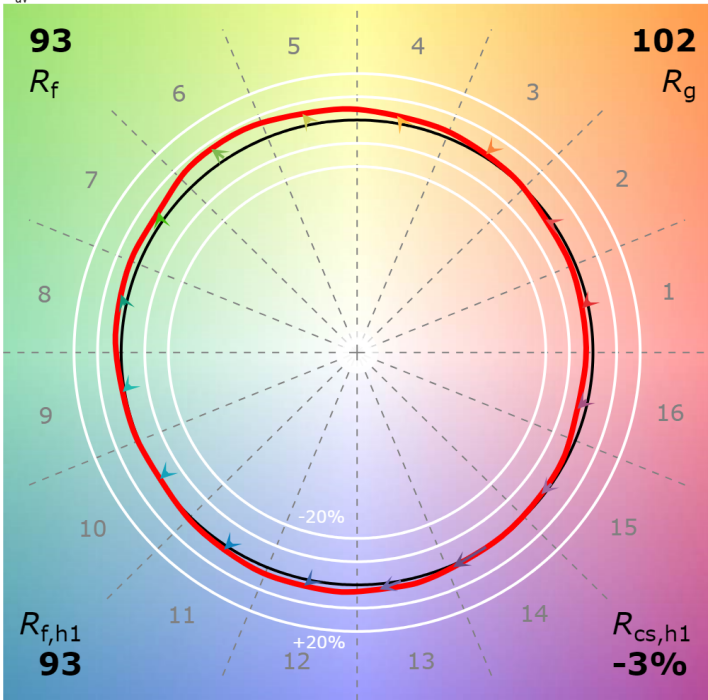
## 4" Non-IC Downlight - Warm Dim 3000K, 1000 lm



## 4" Non-IC Downlight - T1 Tunable White 1800K, 1000 lm

CCT: 1802 K  
 $D_{uv}$ : -0.0006

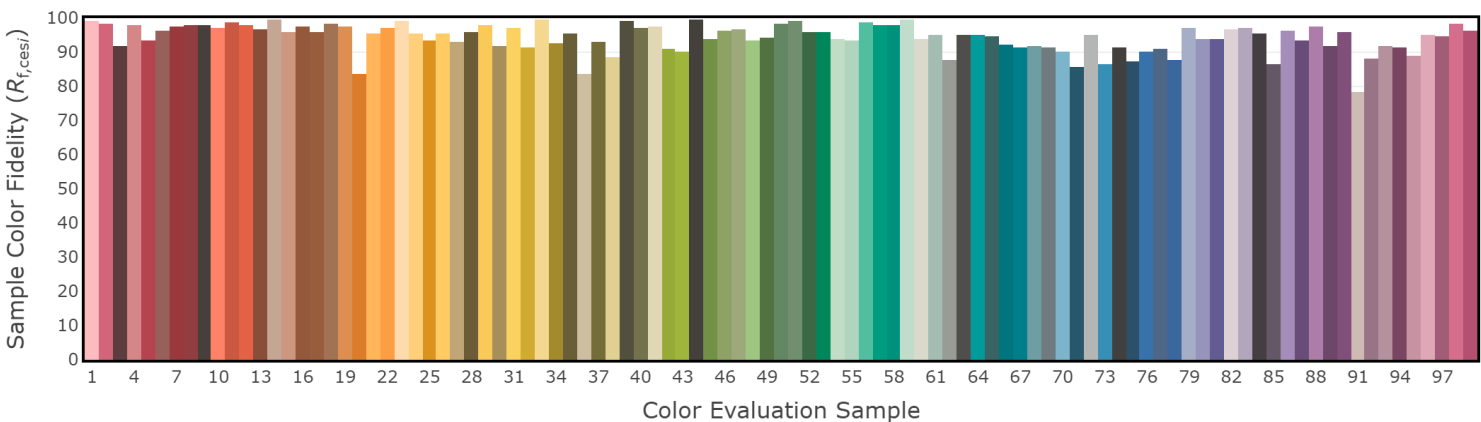
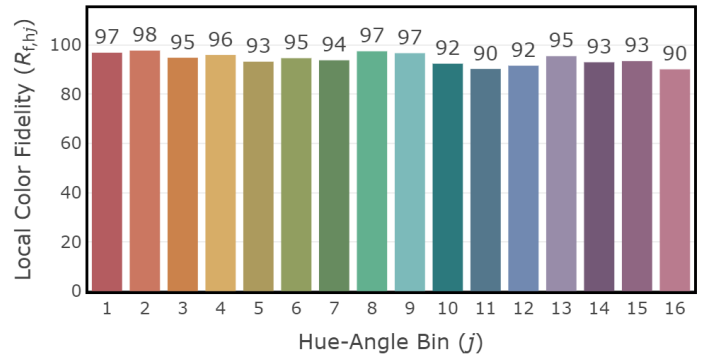
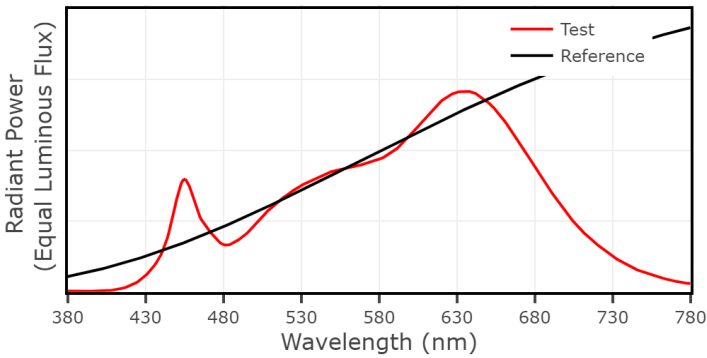
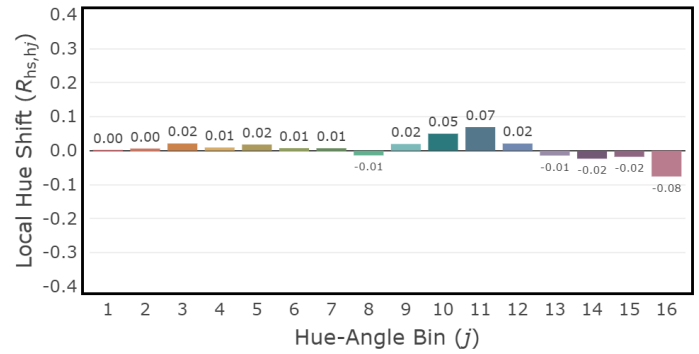
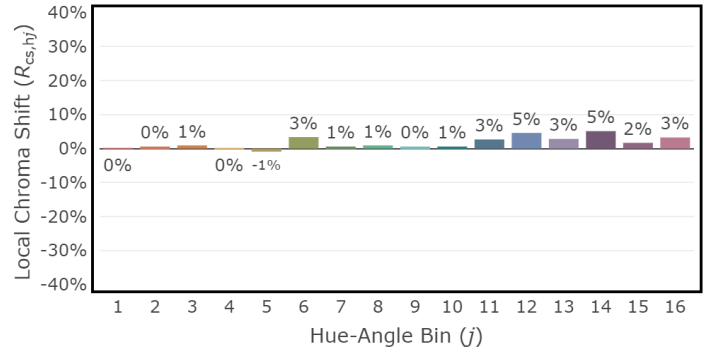
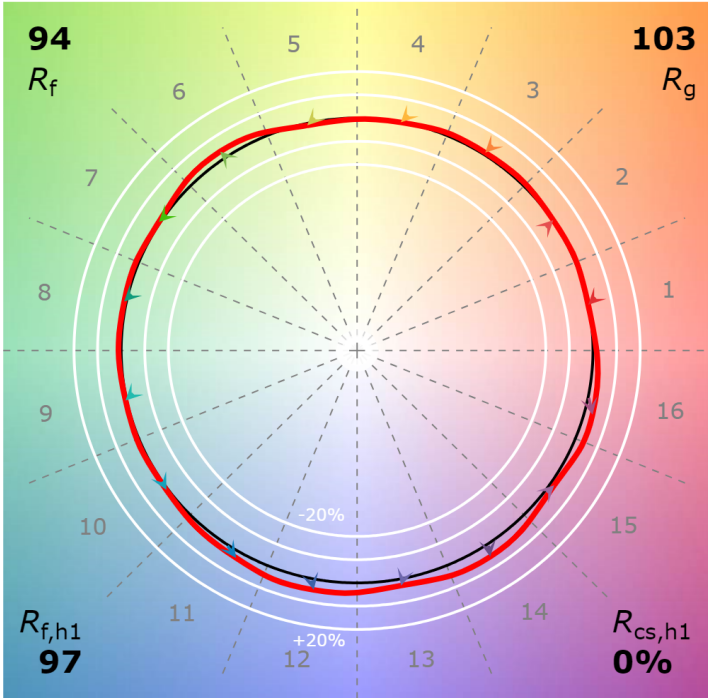
P2 V- F2



## 4" Non-IC Downlight - T1 Tunable White 3000K, 1000 lm

CCT: 3015 K  
 $D_{uv}$ : -0.0042

P1 V3 F2



## 4" Non-IC Downlight - T1 Tunable White 4000K, 1000 lm

CCT: 3888 K  
 $D_{uv}$ : 0.0020

P2 V- F2

