



## 4" Non-IC Adjustable

### TM-30 Color Rendition Reports

#### 2400K

---

750-2000 lm

#### 2700K

---

750-2000 lm

2500-3500 lm

#### 3000K

---

750-2000 lm

2500-3500 lm

#### 3500K

---

750-2000 lm

2500-3500 lm

#### 4000K

---

750-2000 lm

2500-3500 lm

#### Warm Dim

---

1800K

3000K

#### T1 Tunable White

---

1800K

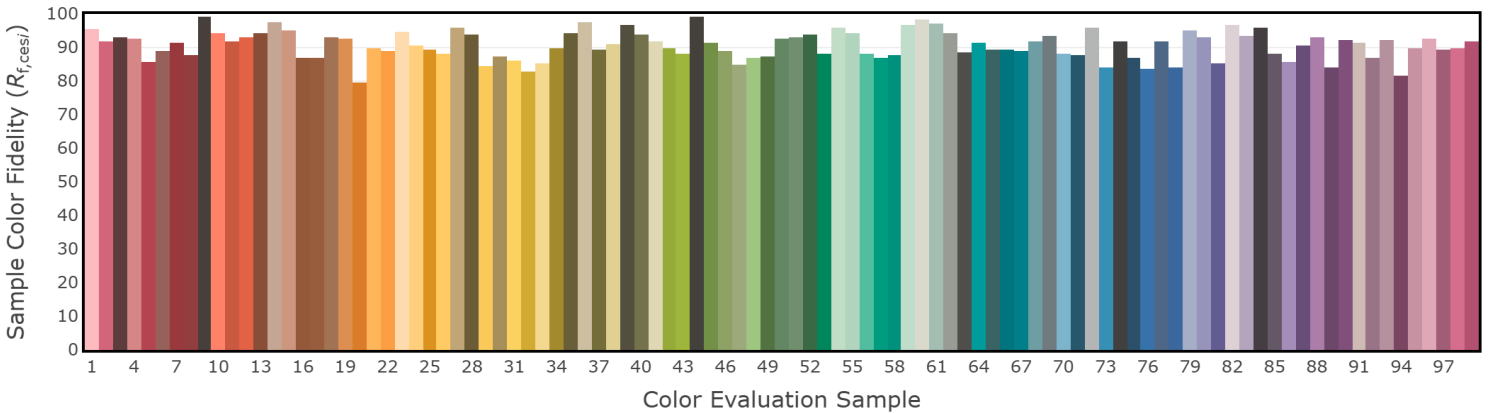
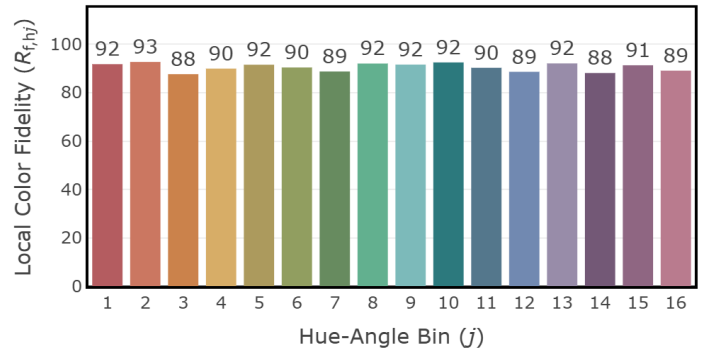
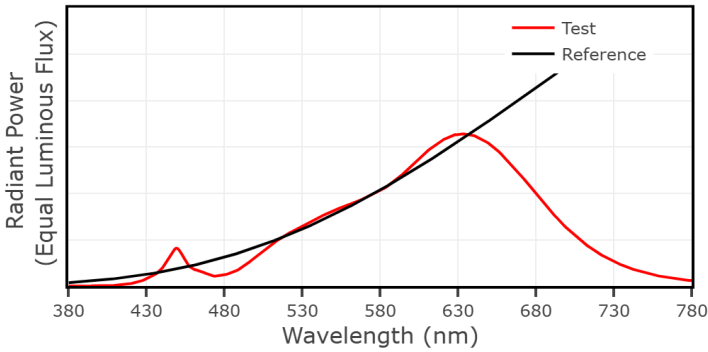
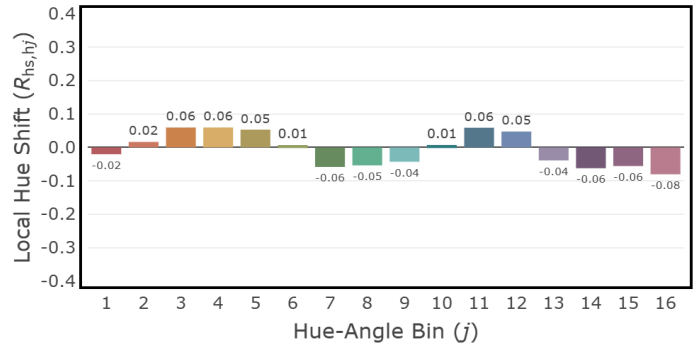
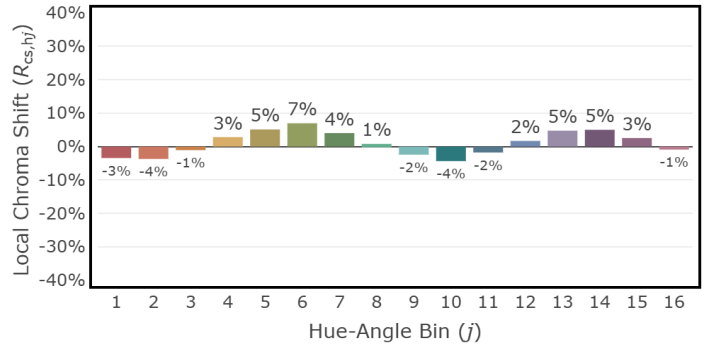
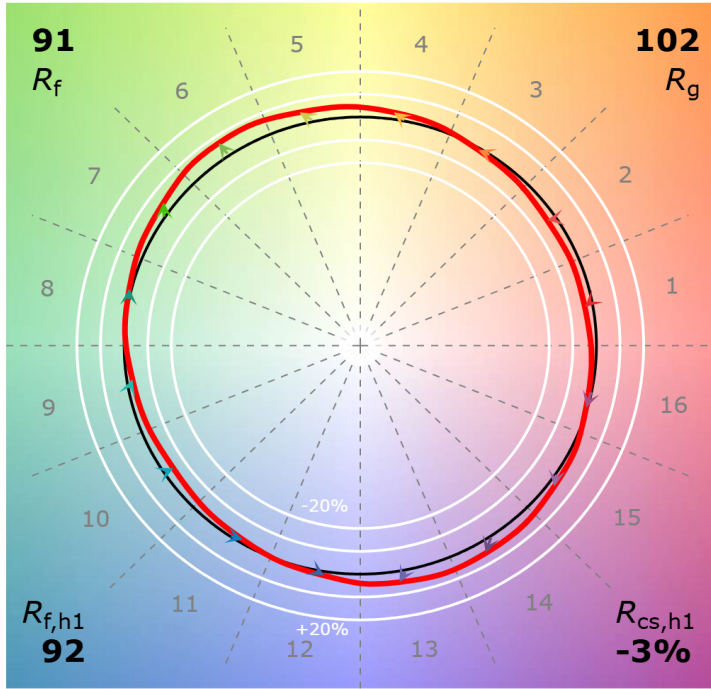
3000K

4000K

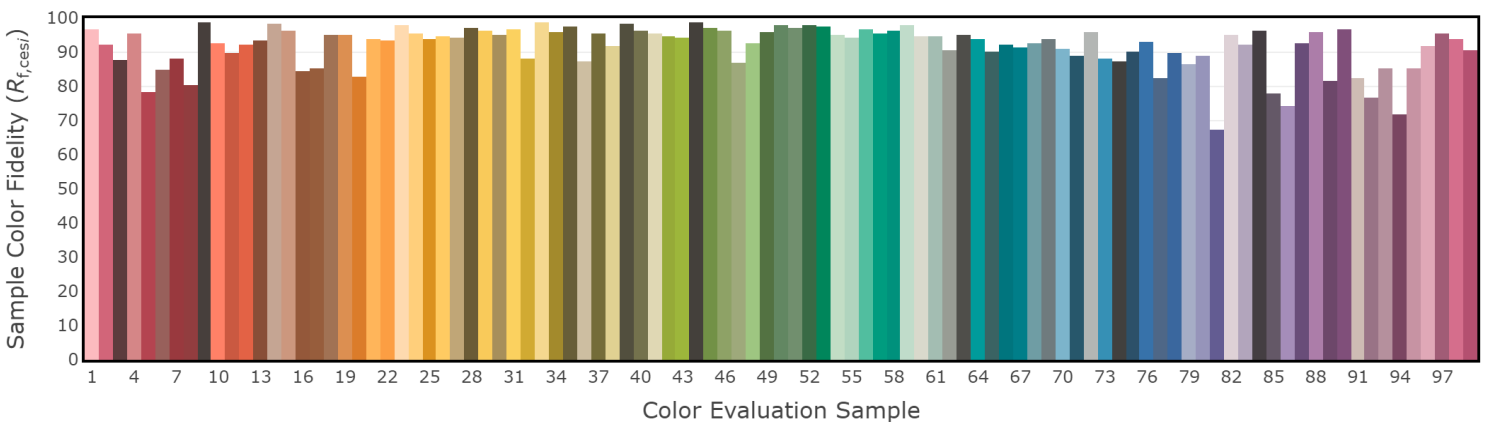
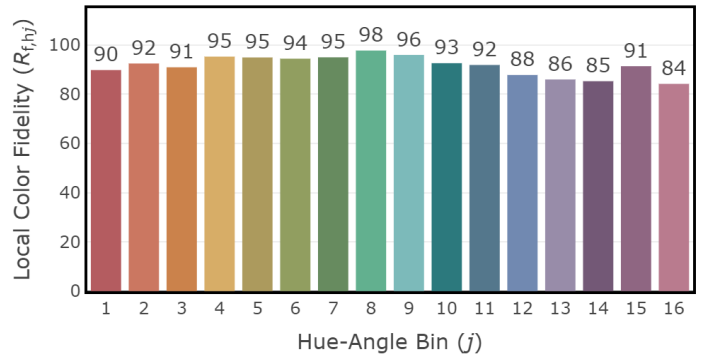
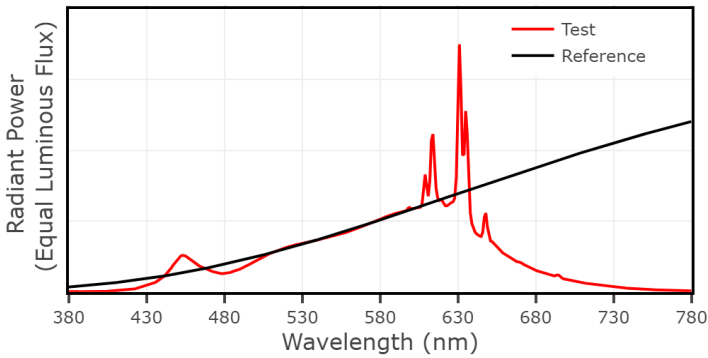
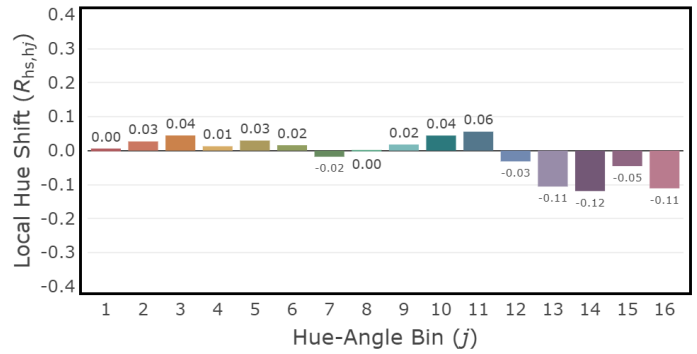
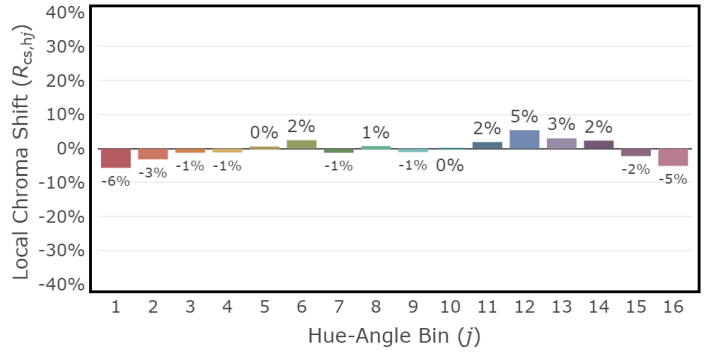
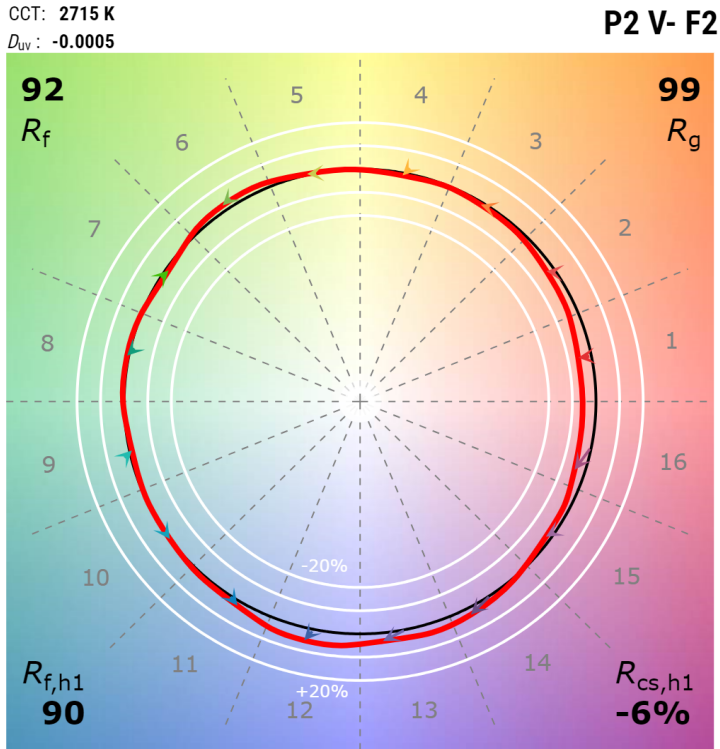
## 4" Non-IC Adjustable 2400K, 750-2000 lm

CCT: 2404 K  
 $D_{uv}$ : 0.0016

P2 V- F2



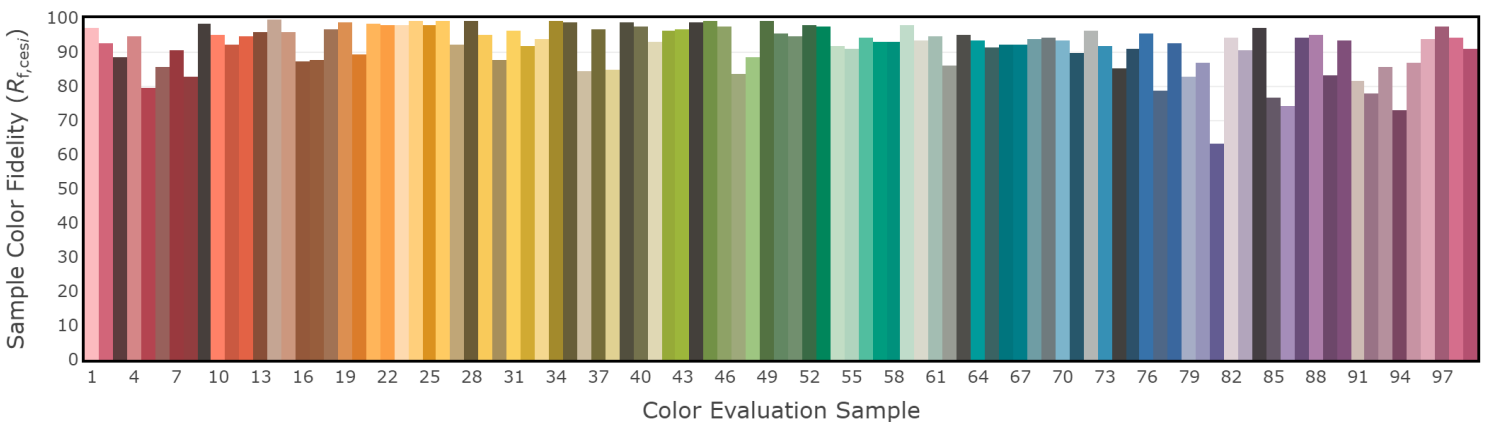
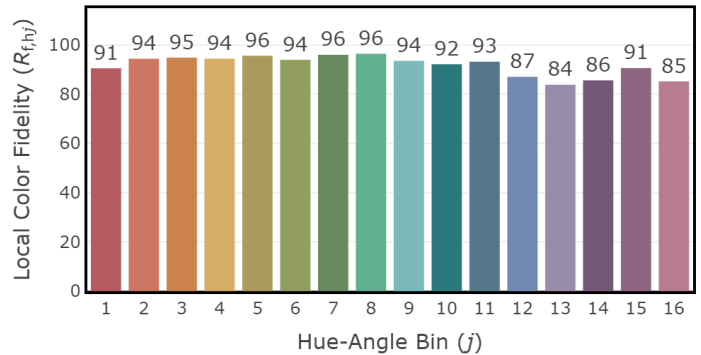
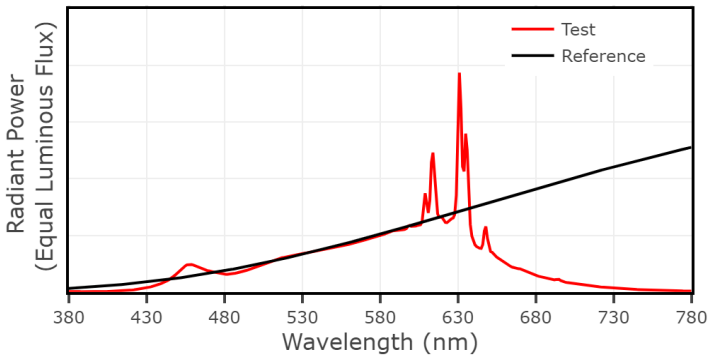
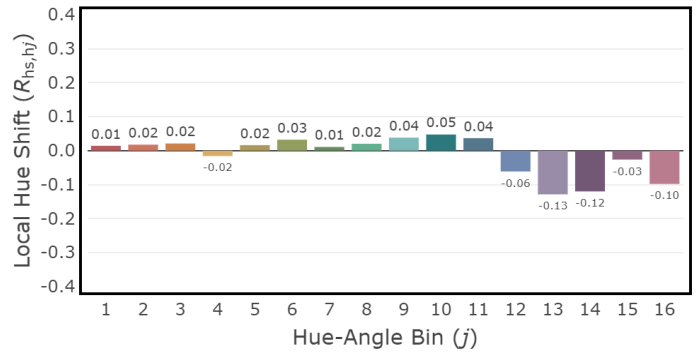
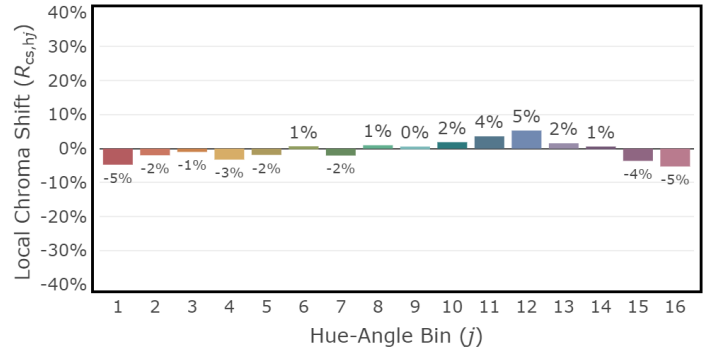
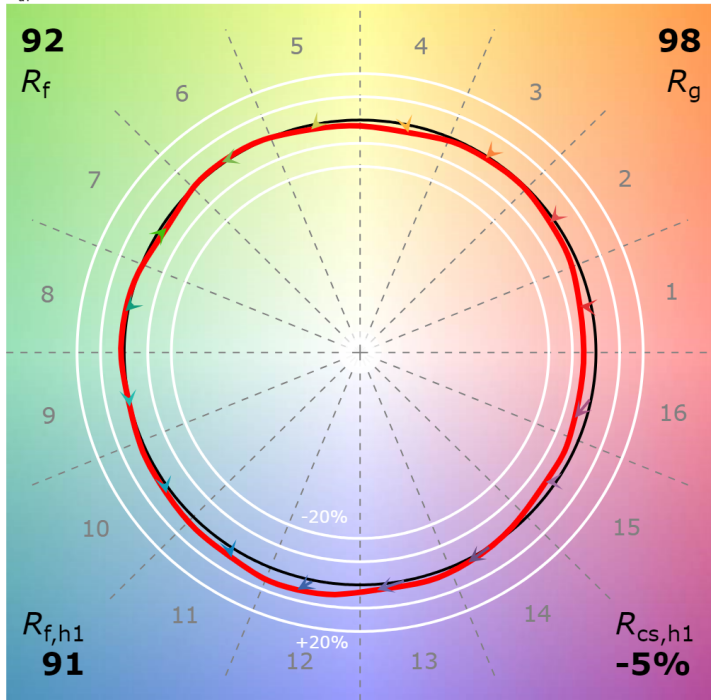
## 4" Non-IC Adjustable 2700K, 750-2000 lm



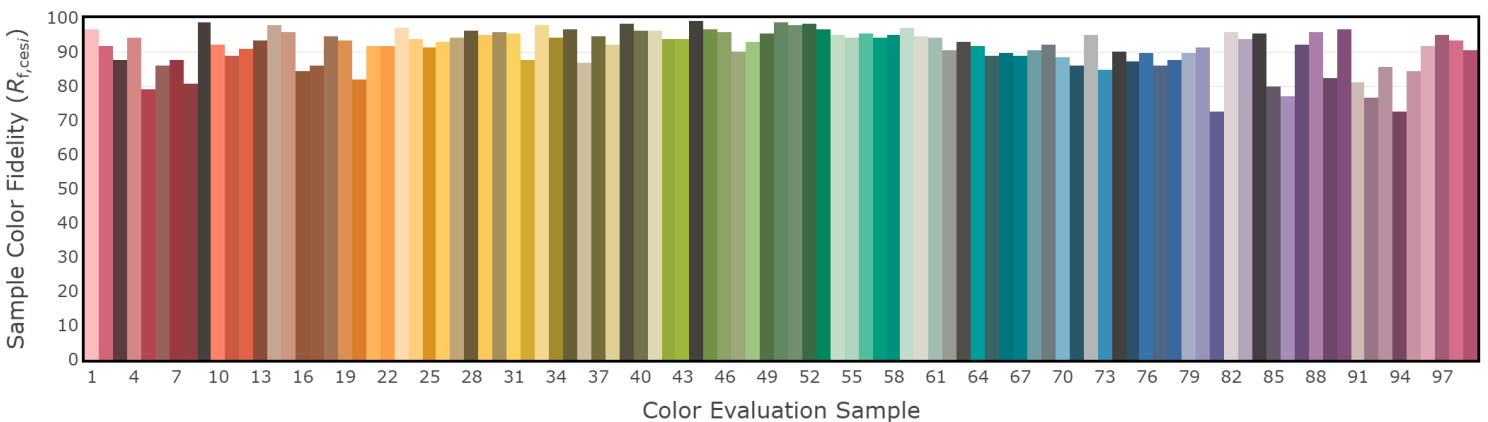
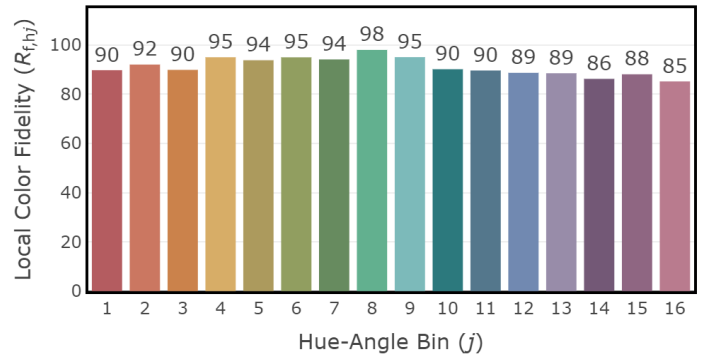
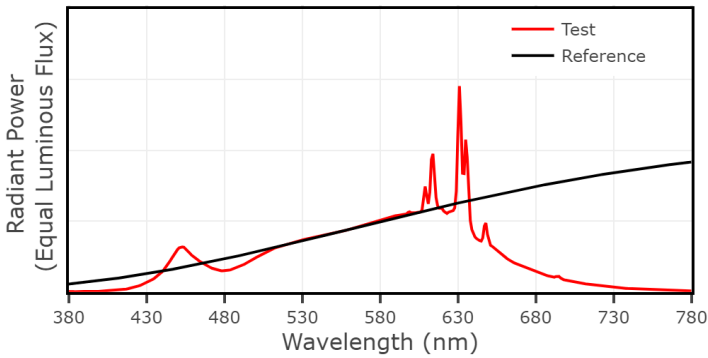
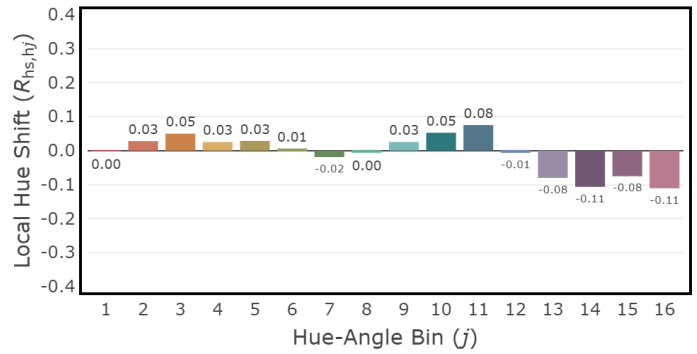
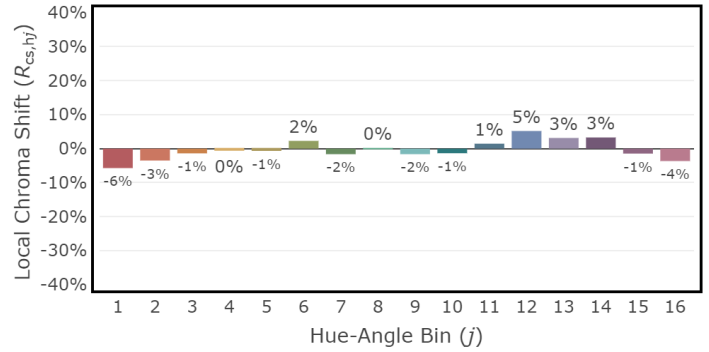
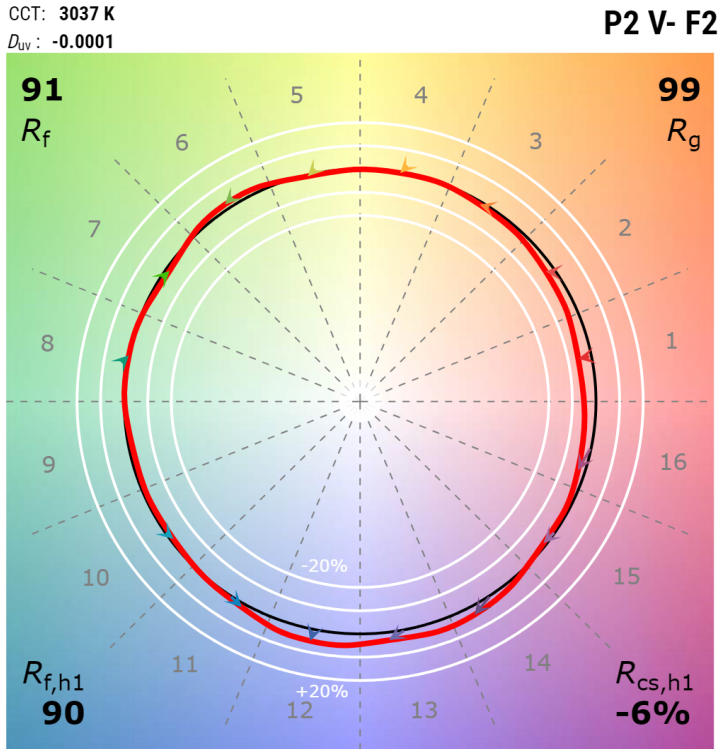
## 4" Non-IC Adjustable 2700K, 2500-3500 lm

CCT: 2653 K  
 $D_{uv}$ : -0.0009

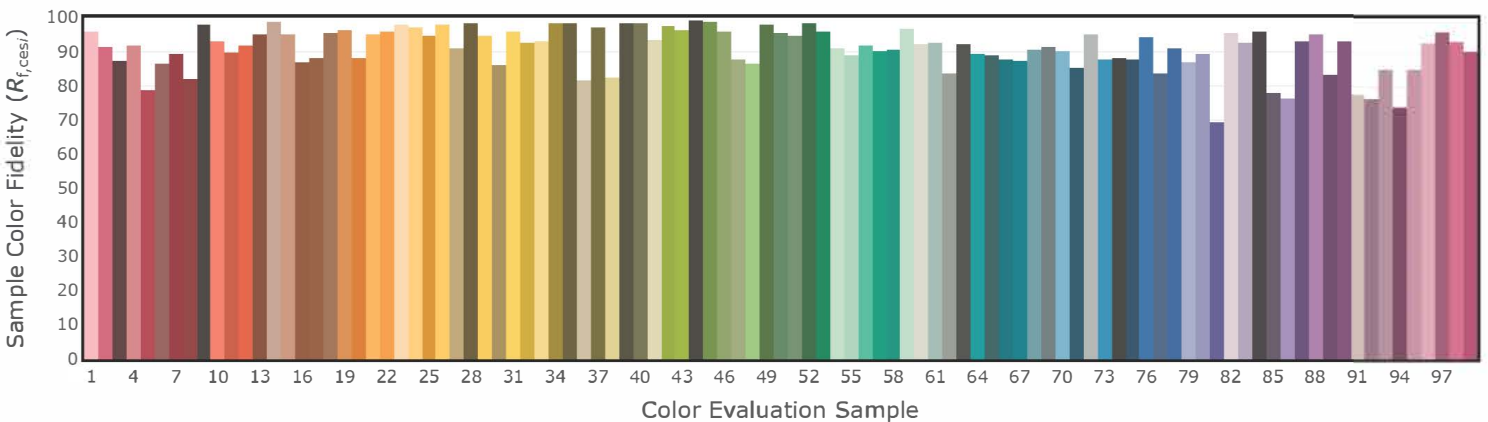
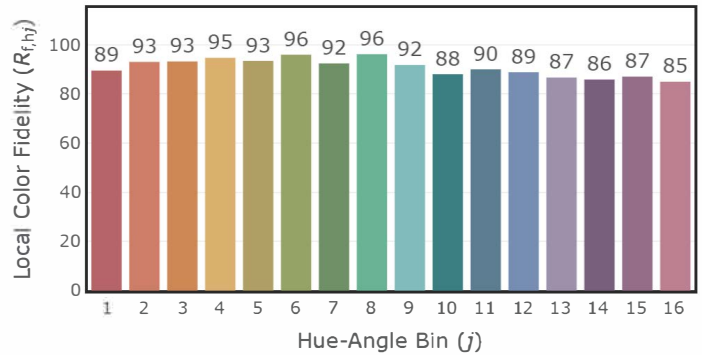
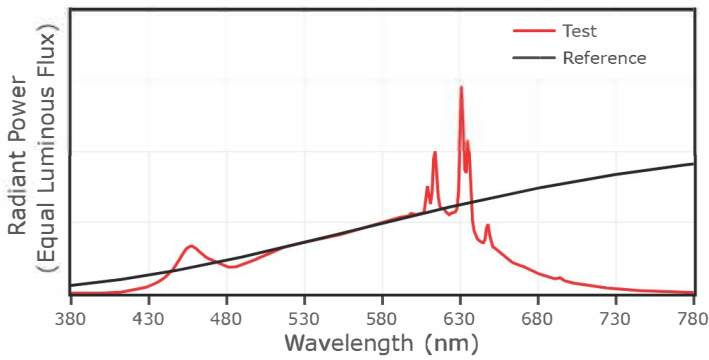
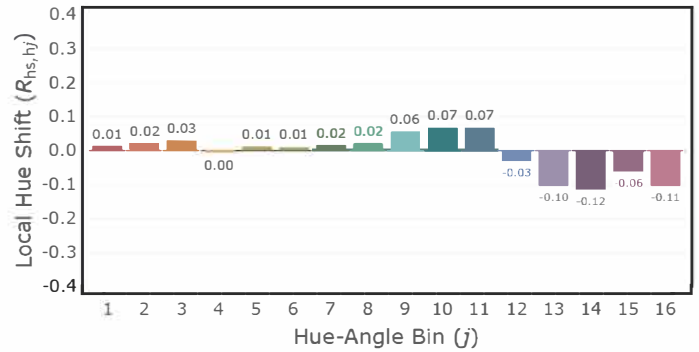
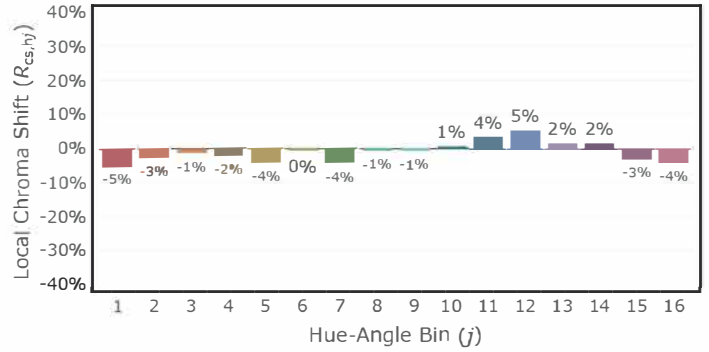
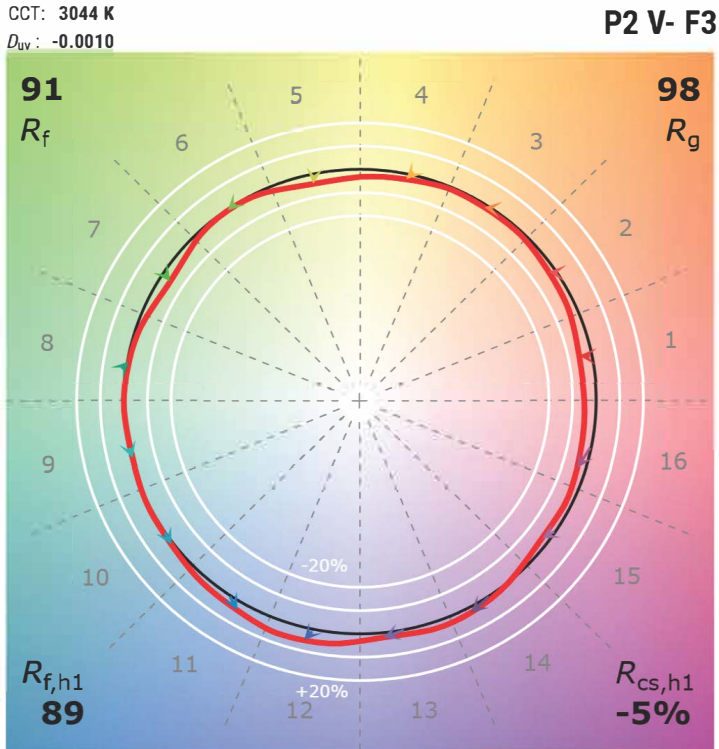
P2 V- F2



## 4" Non-IC Adjustable 3000K, 750-2000 lm



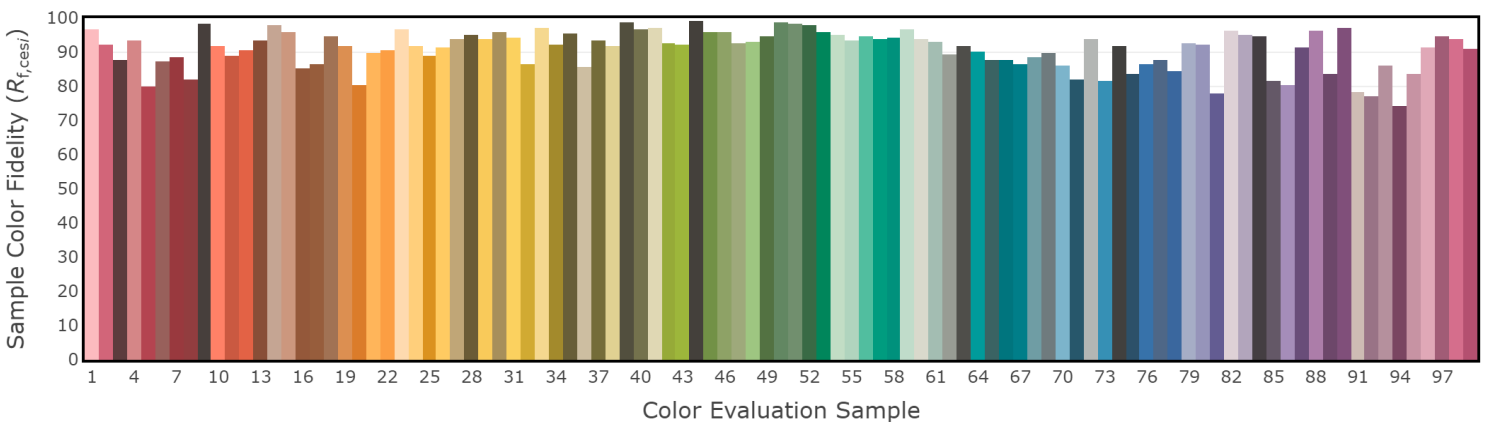
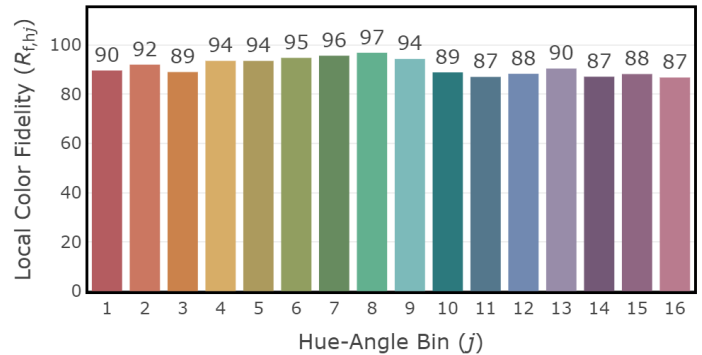
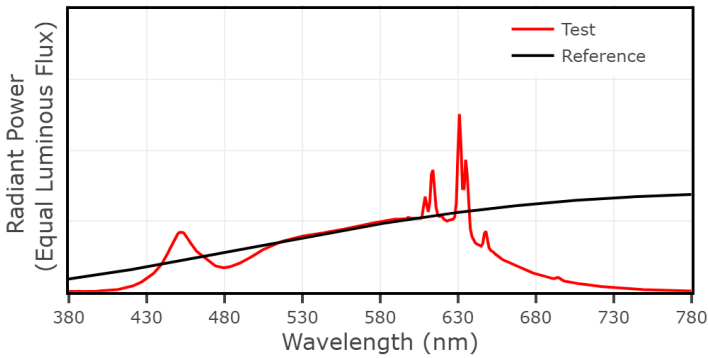
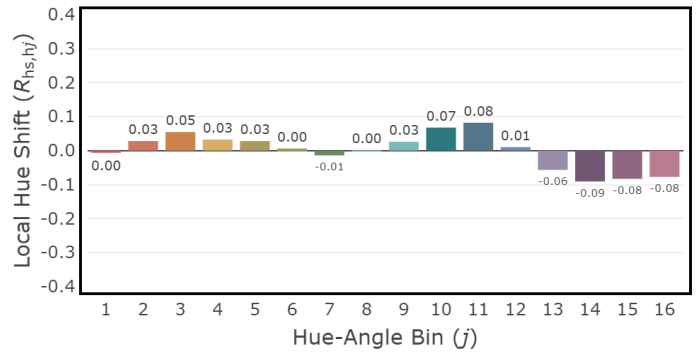
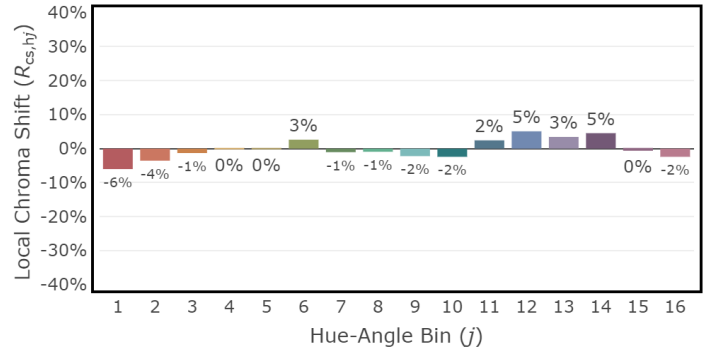
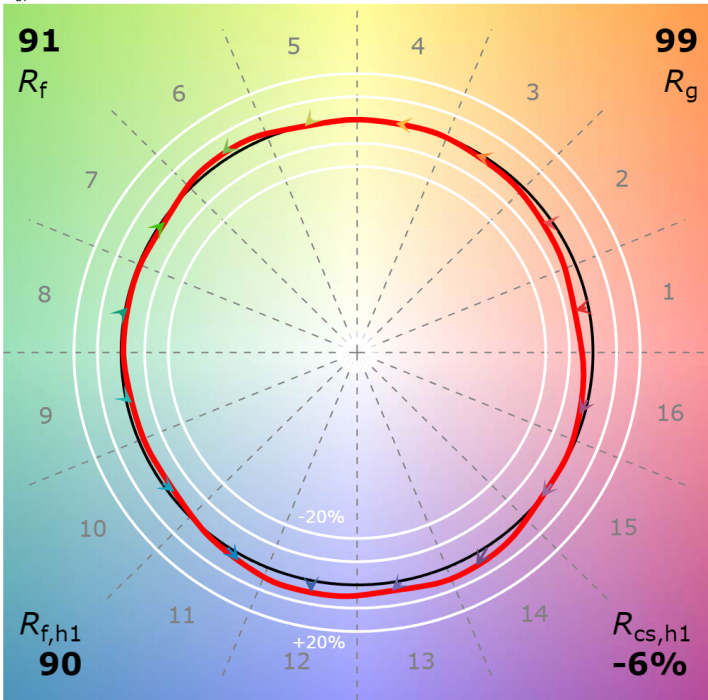
## 4" Non-IC Adjustable 3000K, 2500-3500 lm



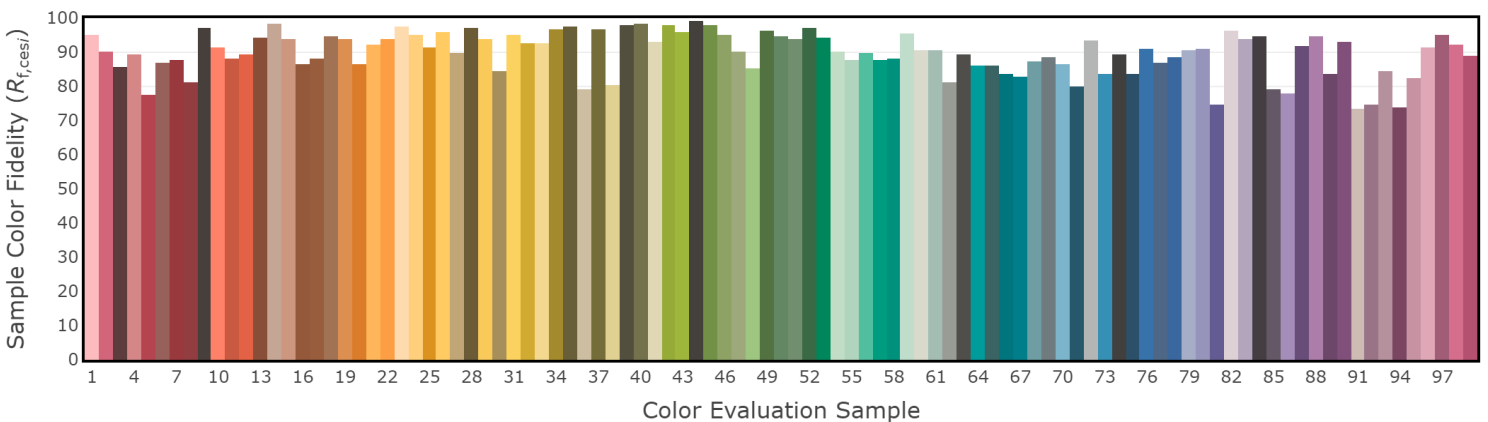
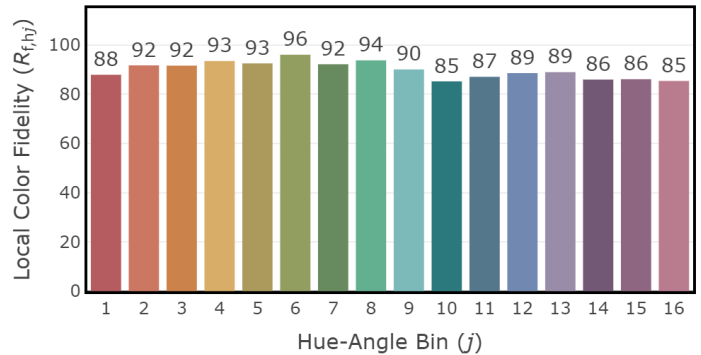
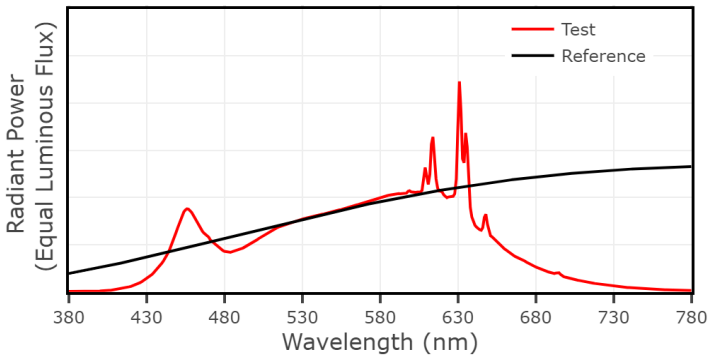
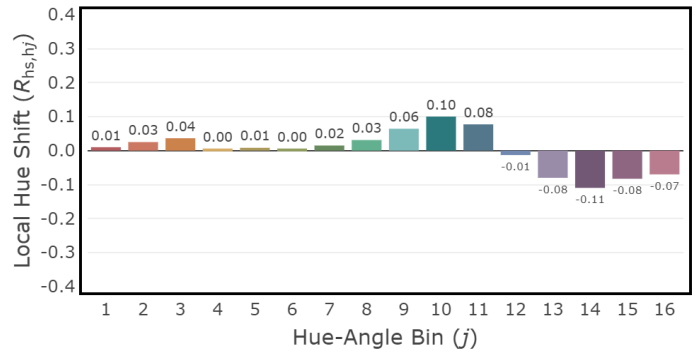
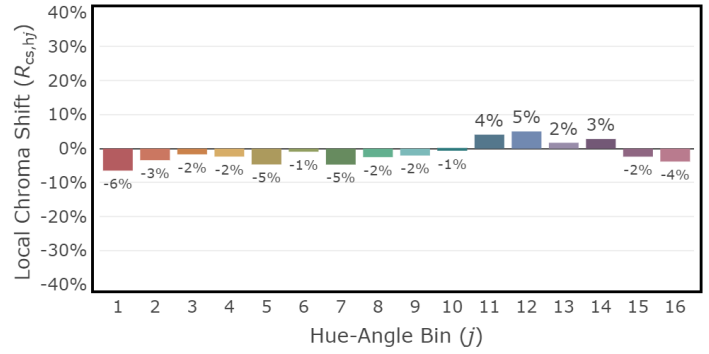
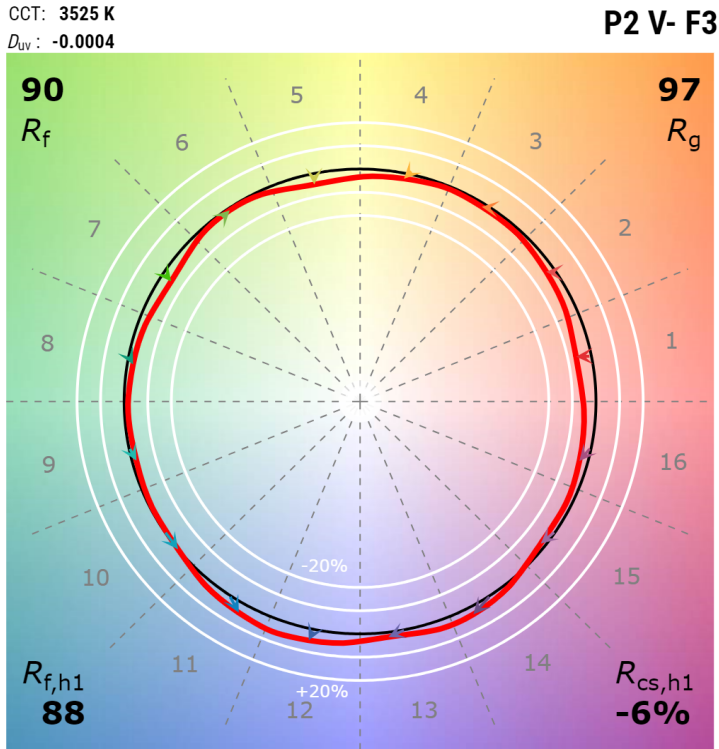
## 4" Non-IC Adjustable 3500K, 750-2000 lm

CCT: 3464 K  
 $D_{uv}$ : -0.0007

P2 V- F2



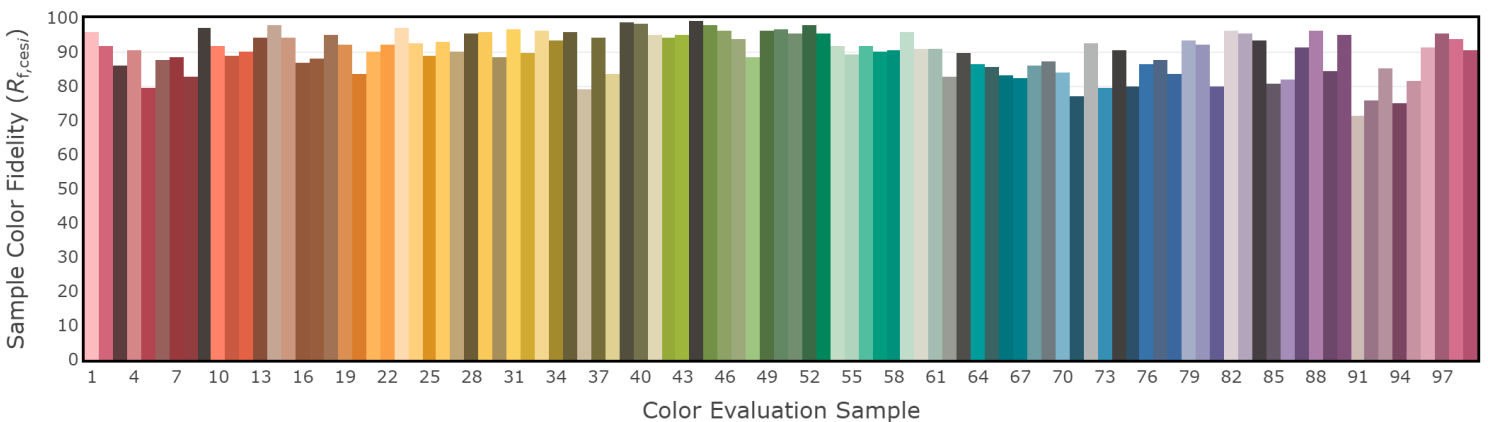
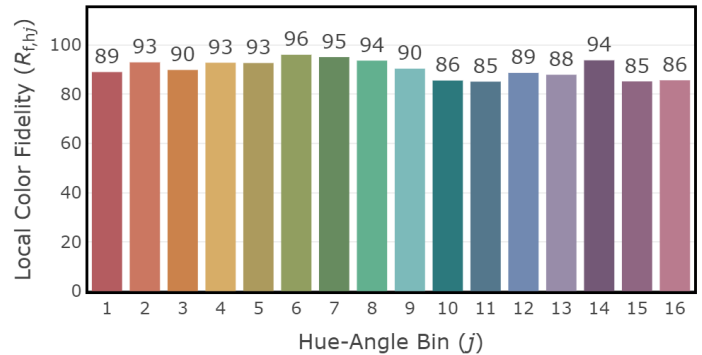
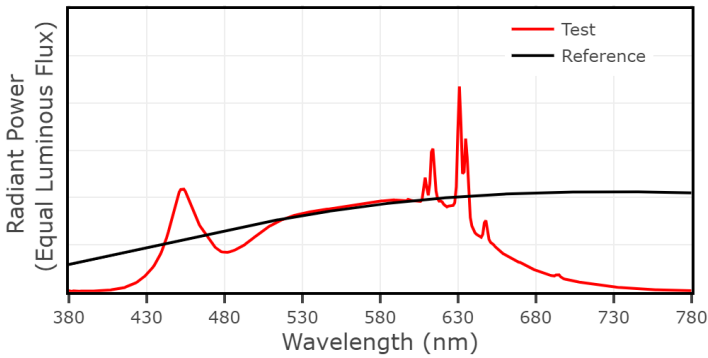
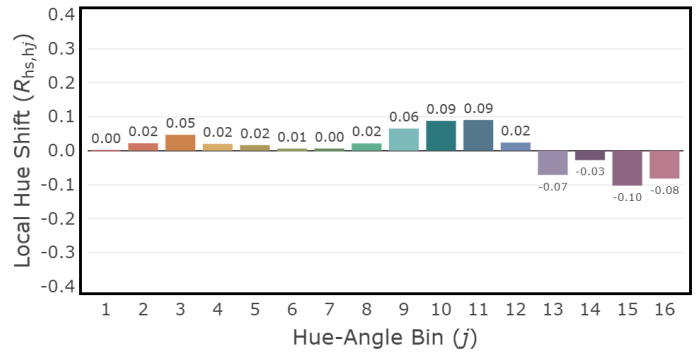
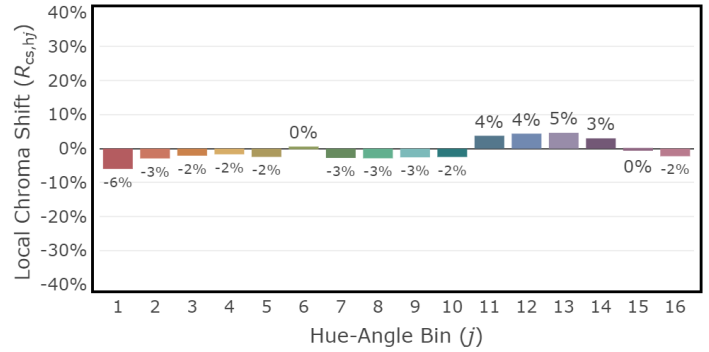
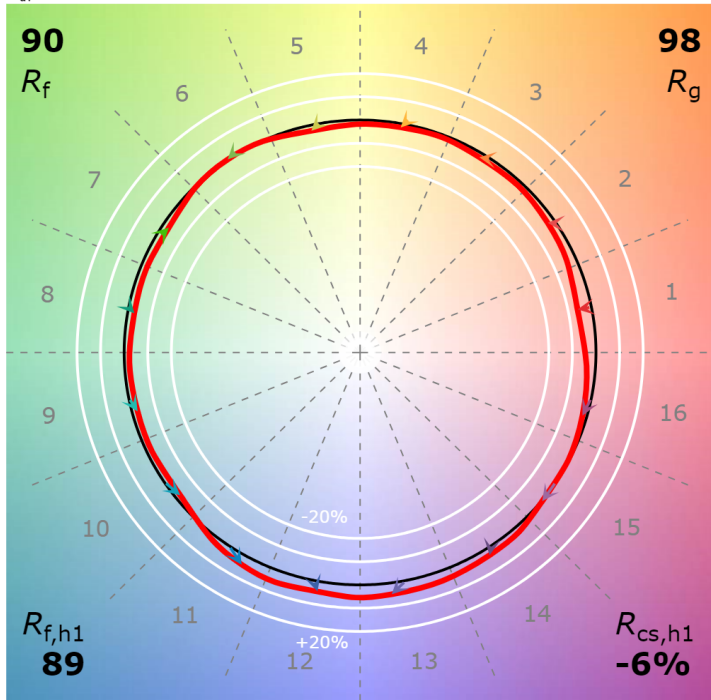
## 4" Non-IC Adjustable 3500K, 2500-3500 lm



## 4" Non-IC Adjustable 4000K, 750-2000 lm

CCT: 3986 K  
 $D_{uv}$ : 0.0002

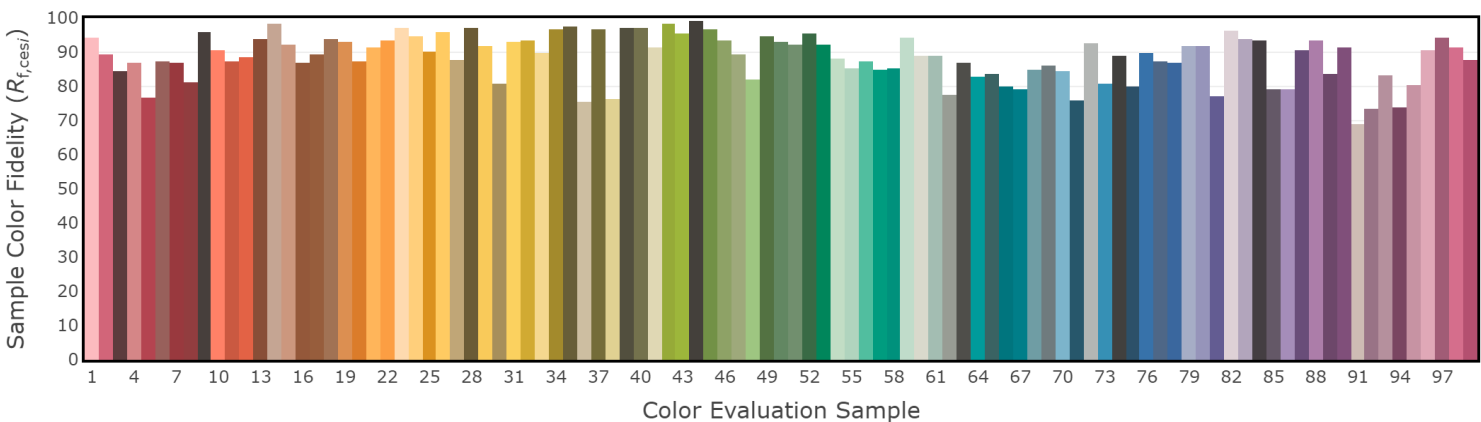
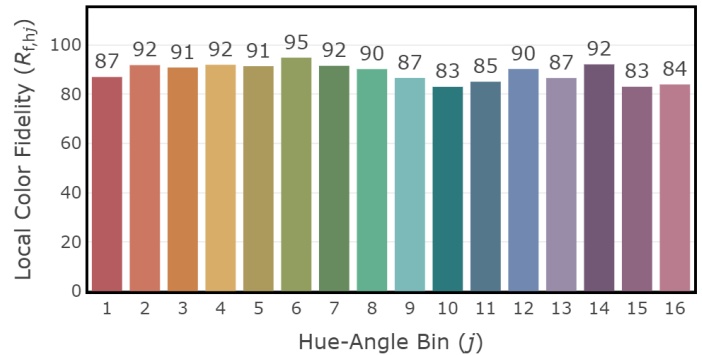
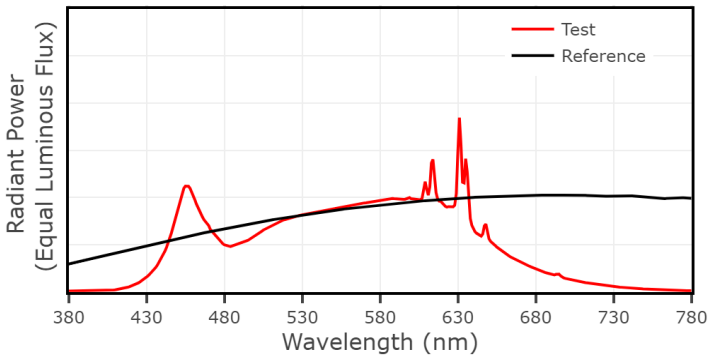
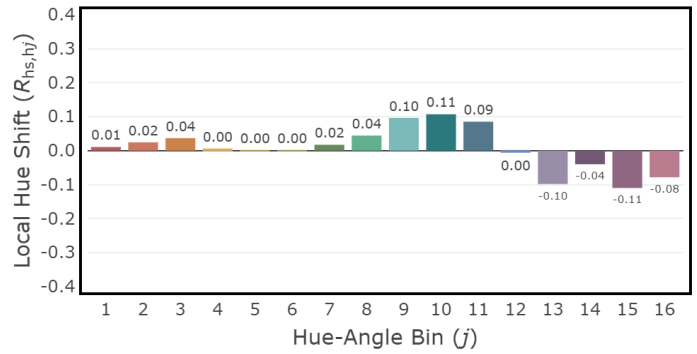
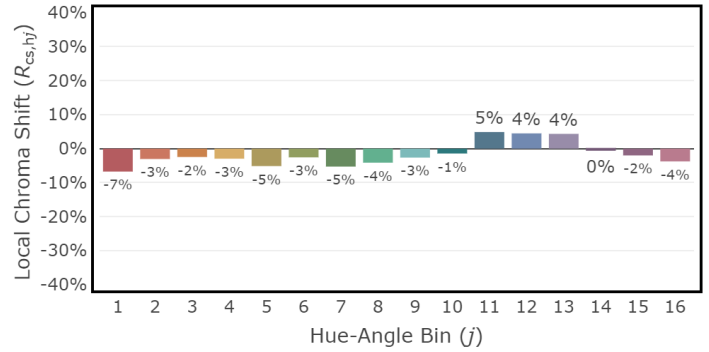
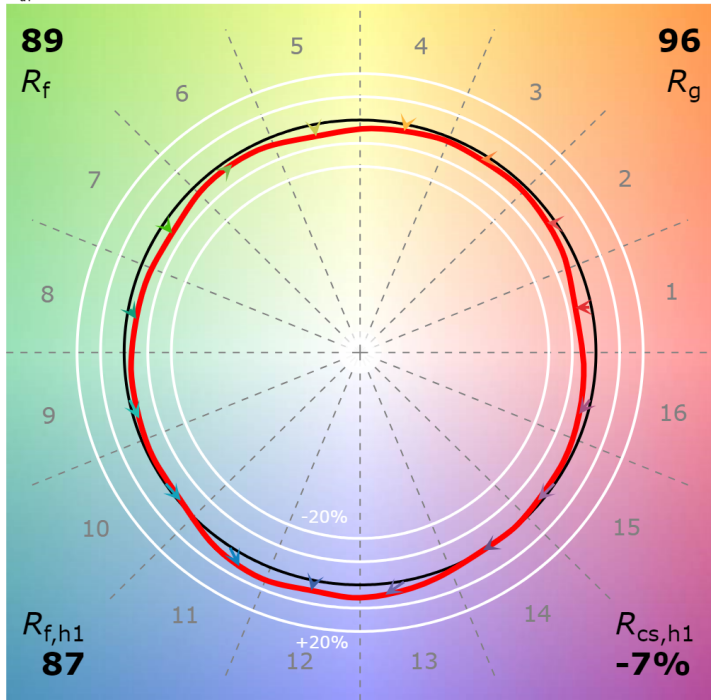
P2 V- F3



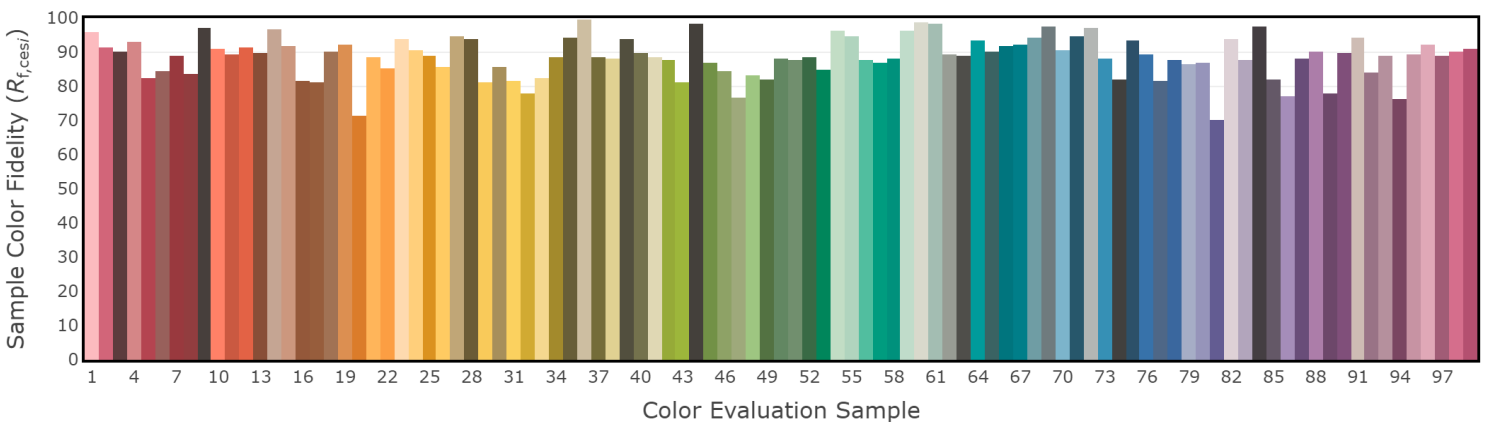
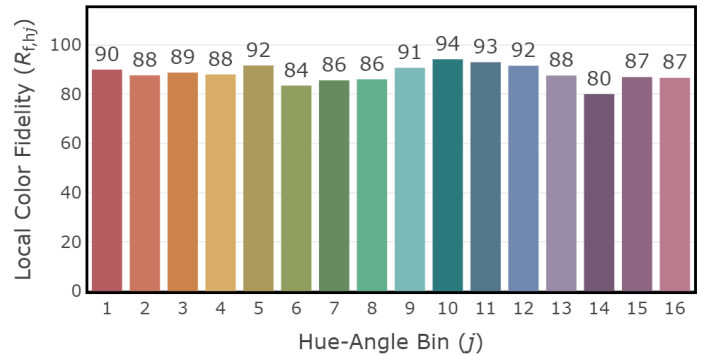
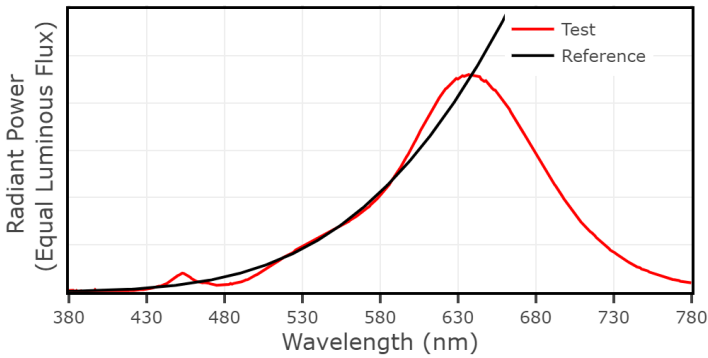
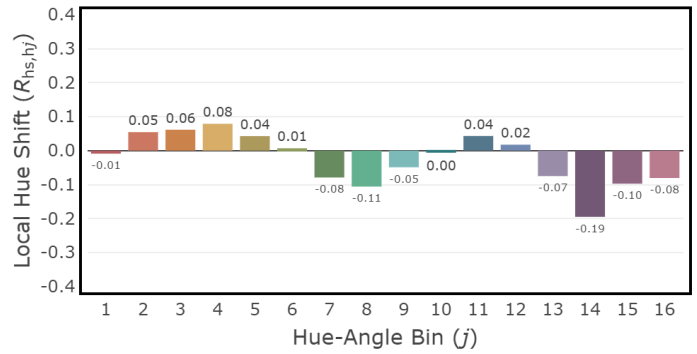
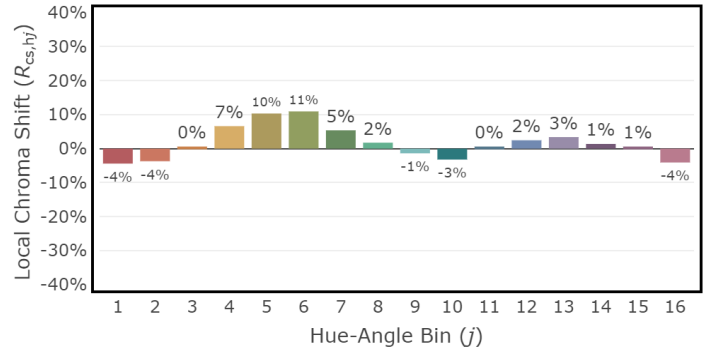
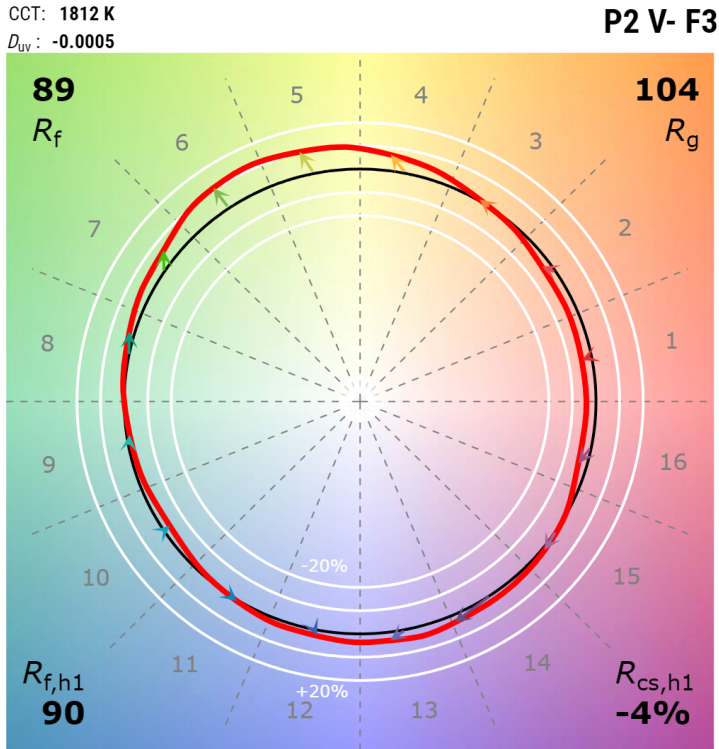
## 4" Non-IC Adjustable 4000K, 2500-3500 lm

CCT: 4082 K  
 $D_{uv}$ : 0.0006

P2 V- F3



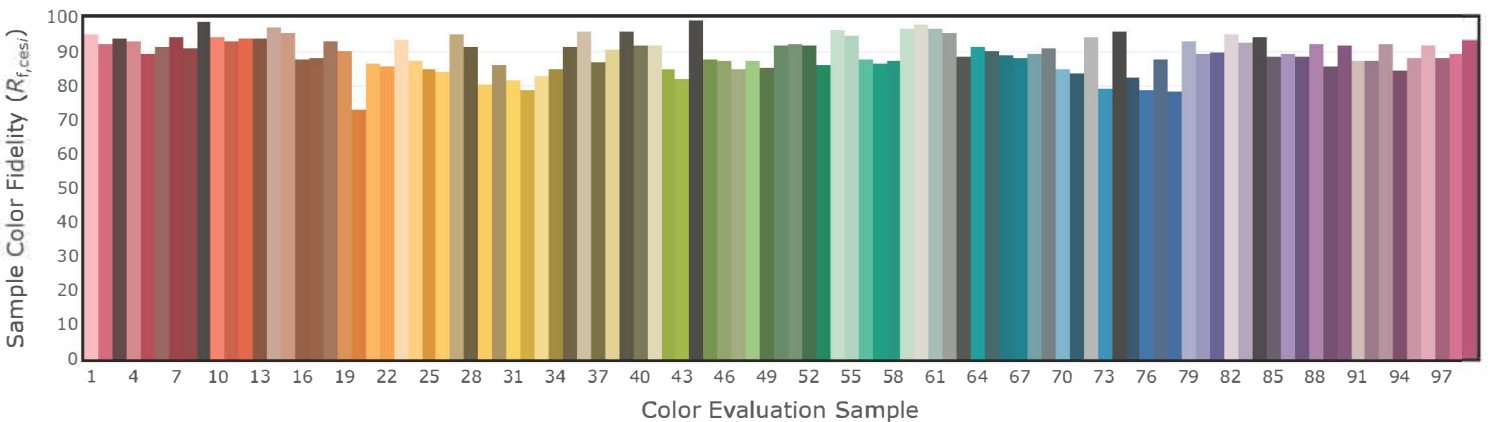
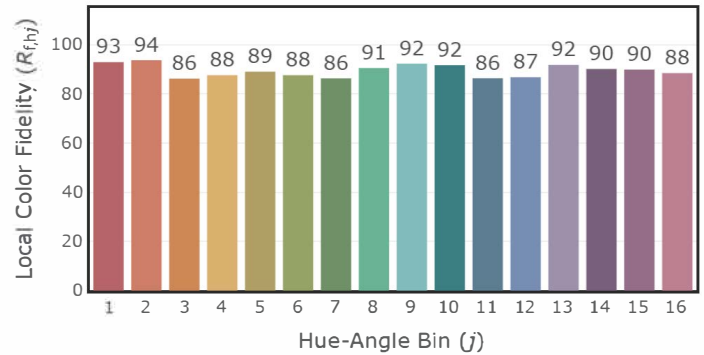
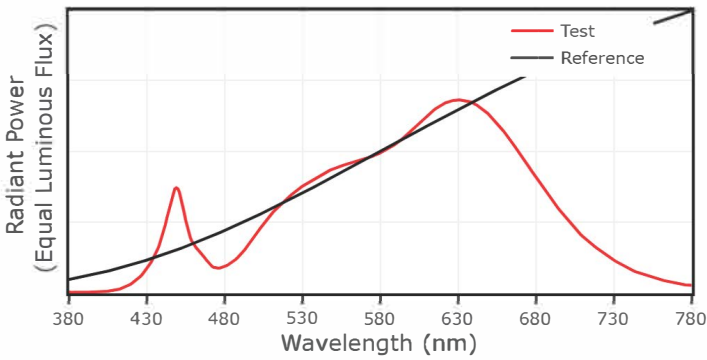
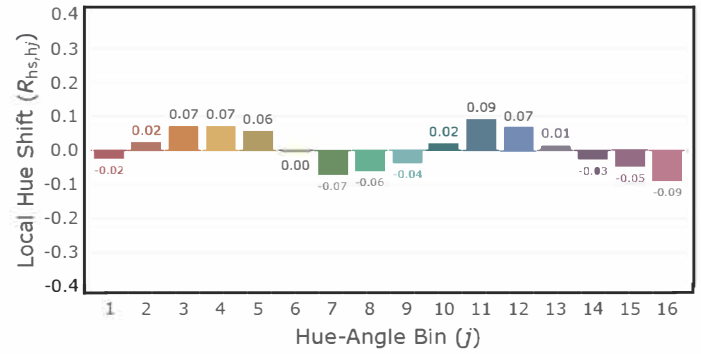
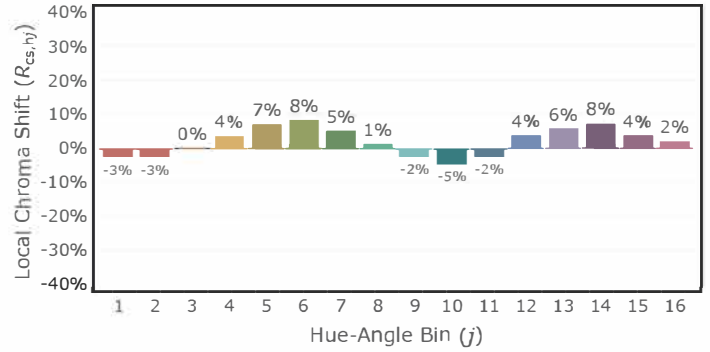
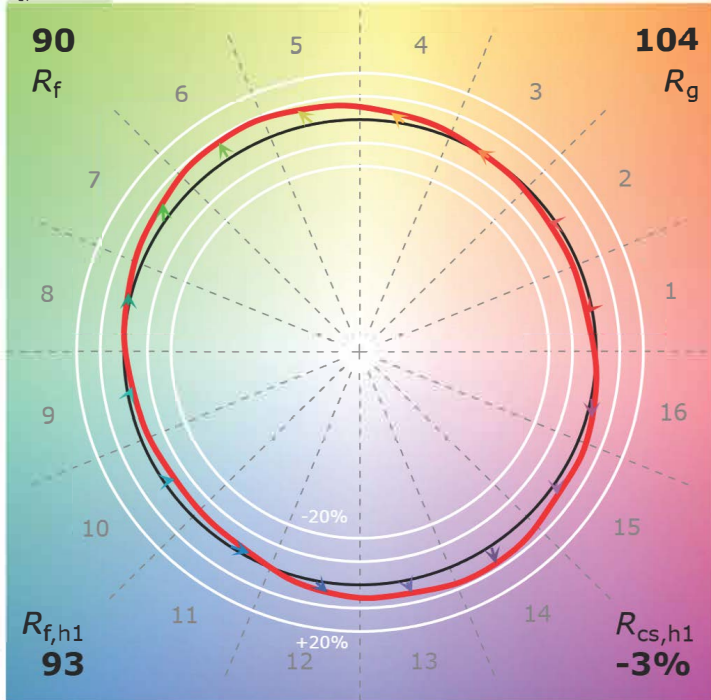
## 4" Non-IC Adjustable - Warm Dim 1800K, 45 lm



## 4" Non-IC Adjustable - Warm Dim 3000K, 1000 lm

CCT: 2930 K  
 $D_{uv}$ : -0.0011

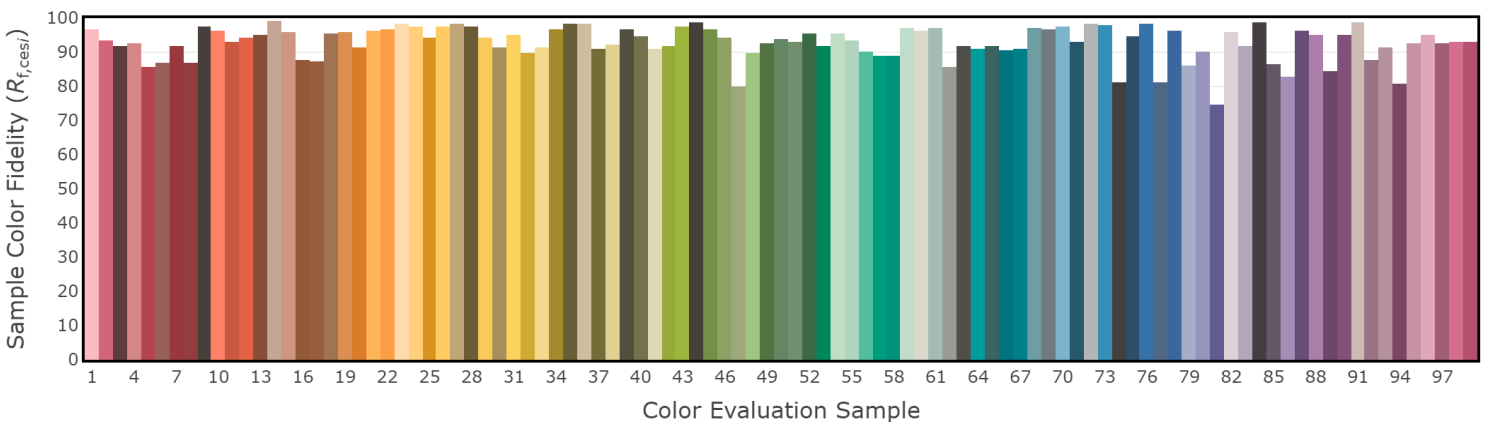
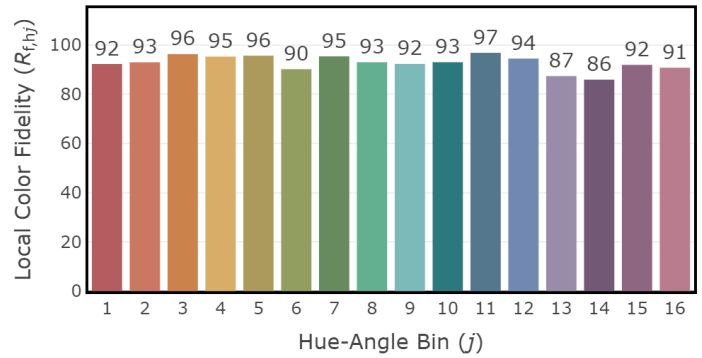
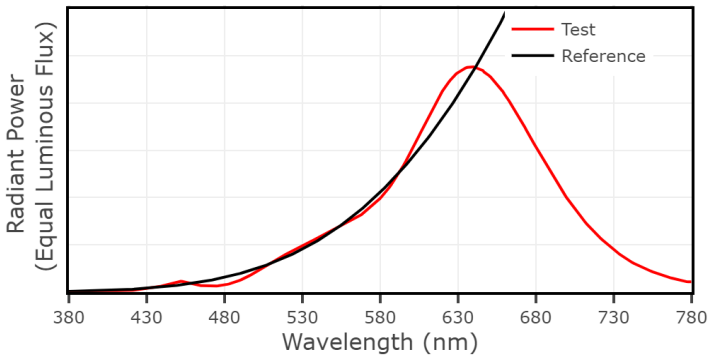
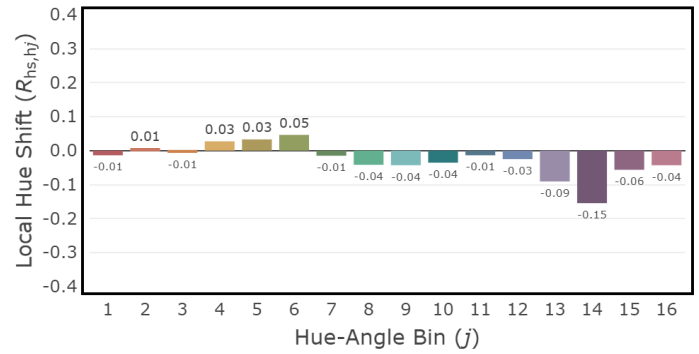
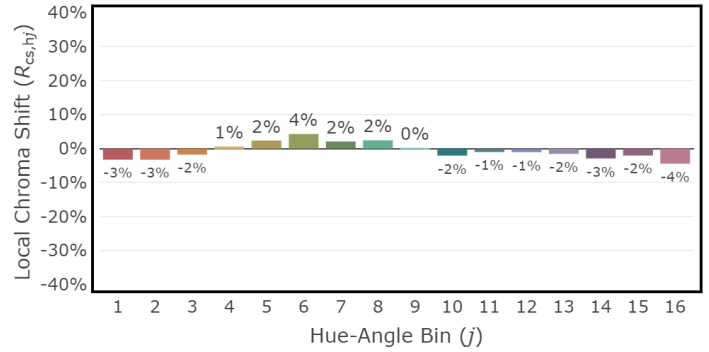
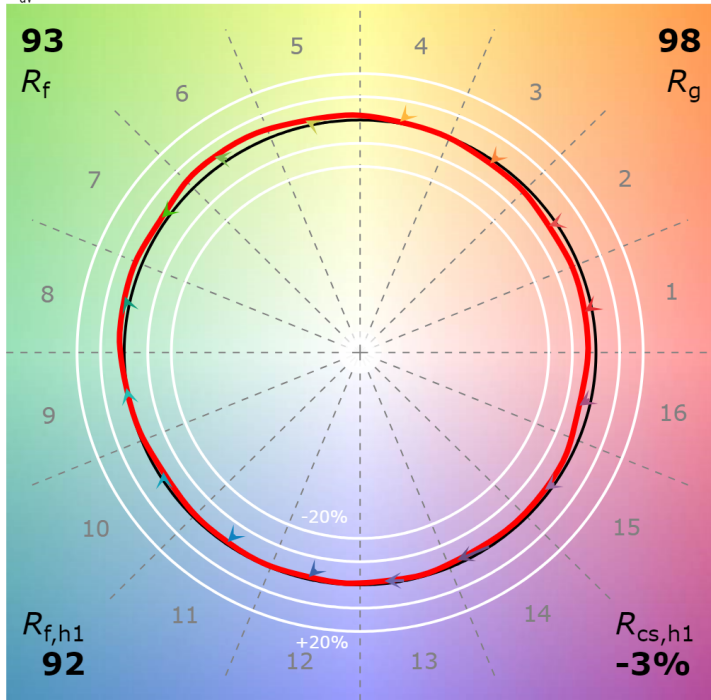
P2 V- F2



## 4" Non-IC Adjustable - T1 Tunable White 1800K, 1000 lm

CCT: 1801 K  
 $D_{uv}$ : 0.0009

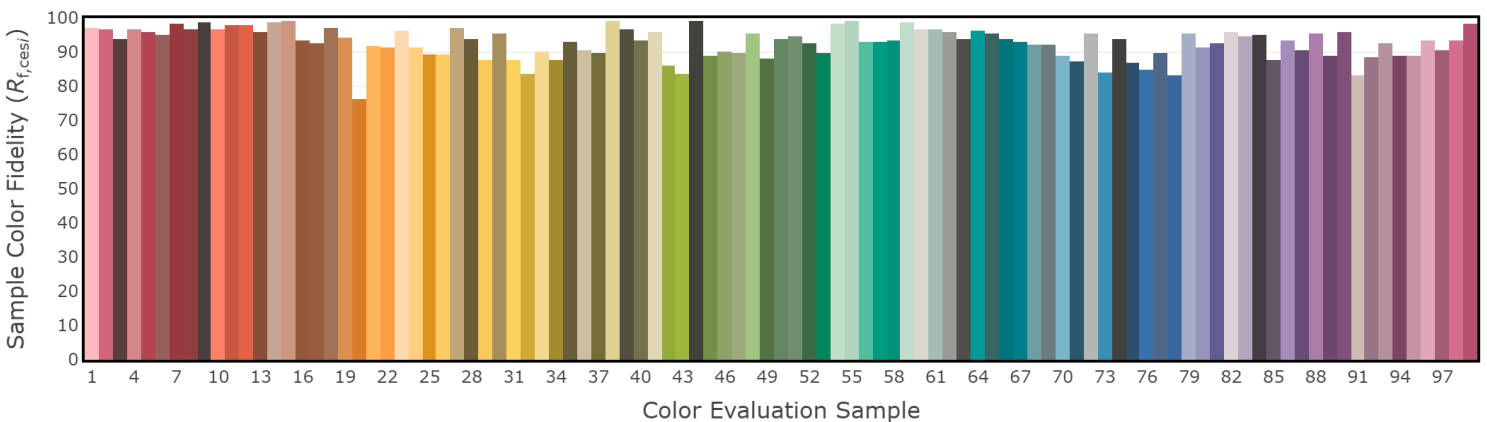
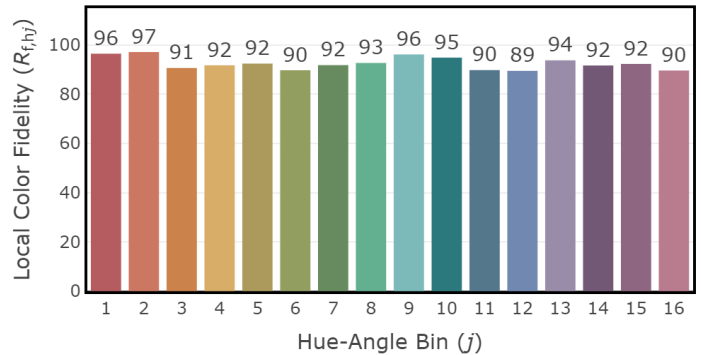
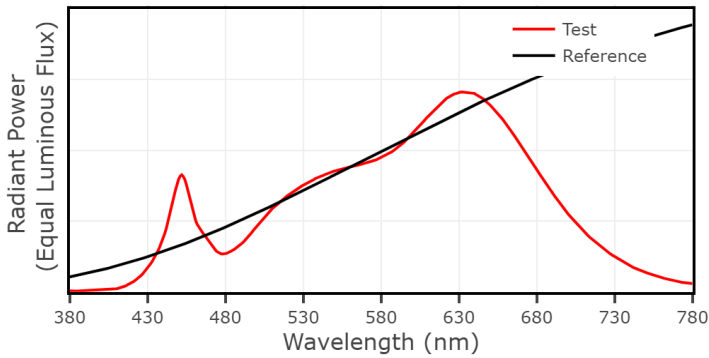
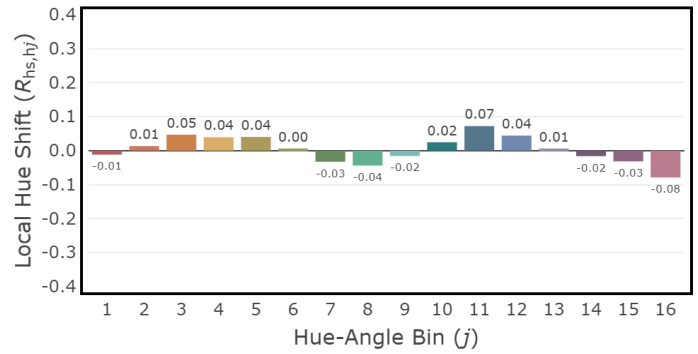
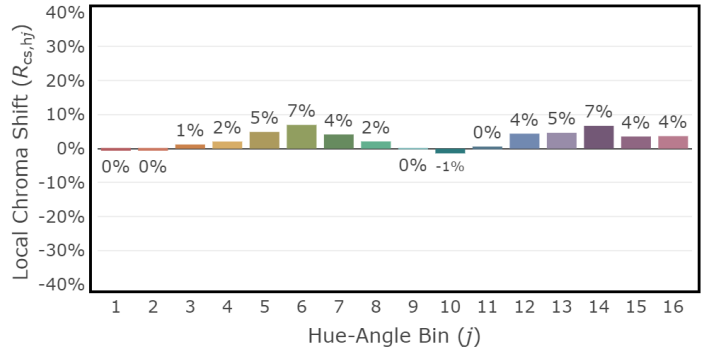
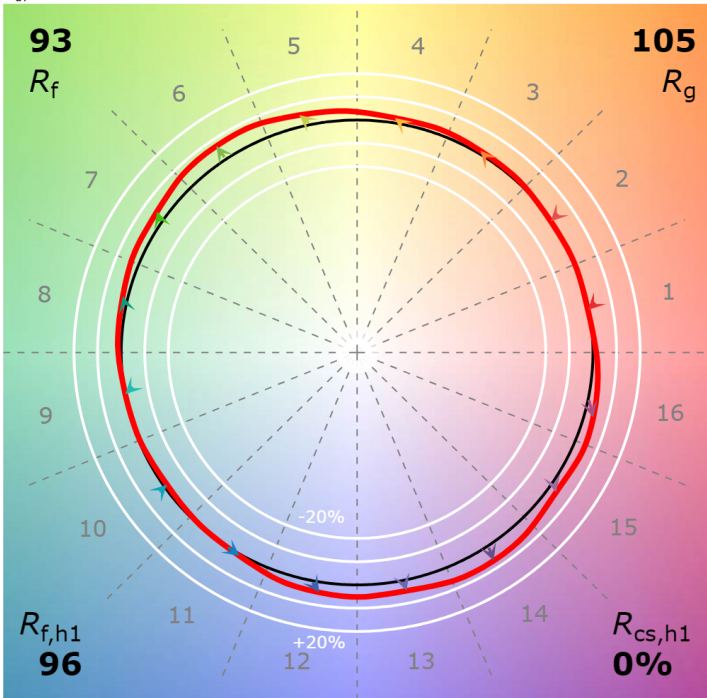
P2 V- F2



## 4" Non-IC Adjustable - T1 Tunable White 3000K, 1000 lm

CCT: 3001 K  
 $D_{uv}$ : -0.0051

P1 V3 F2



## 4" Non-IC Adjustable - T1 Tunable White 4000K, 1000 lm

CCT: 3974 K  
 $D_{uv}$ : 0.0009

P2 V- F2

