



## 4" IC Adjustable

### TM-30 Color Rendition Reports

#### 2400K

---

750-1000 lm

#### 2700K

---

750-1000 lm

#### 3000K

---

750-1000 lm

#### 3500K

---

750-1000 lm

#### 4000K

---

750-1000 lm

#### Warm Dim

---

1800K

3000K

#### T1 Tunable White

---

1800K

3000K

4000K

#### T2 Tunable White

---

2700K

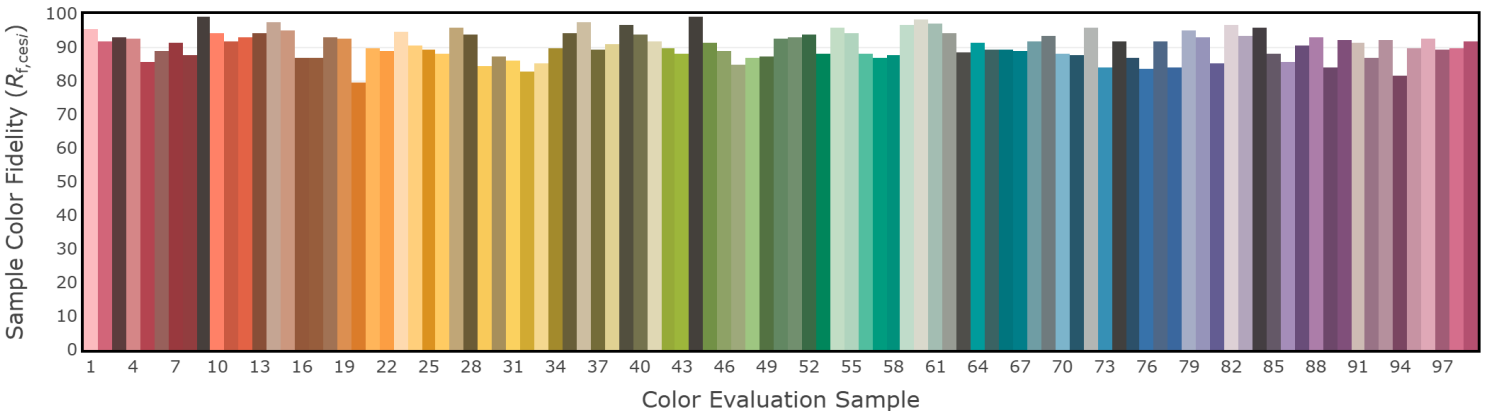
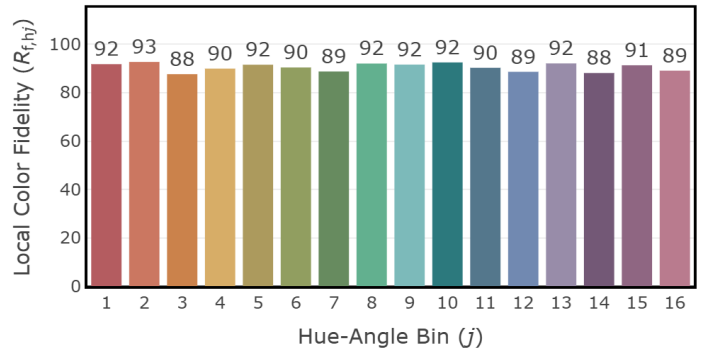
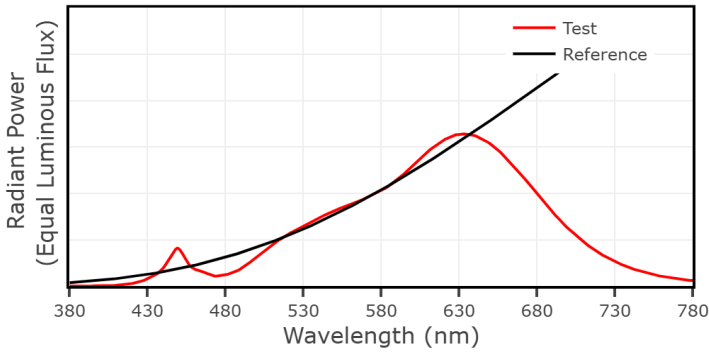
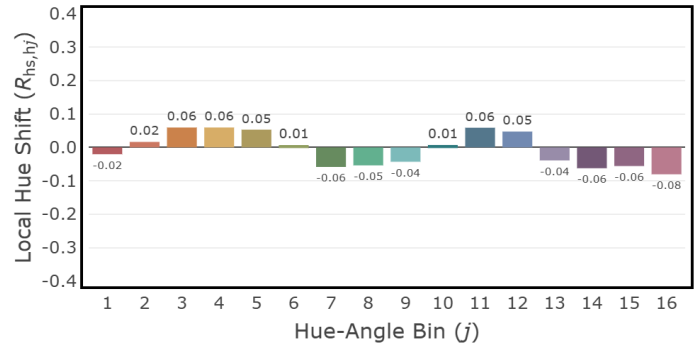
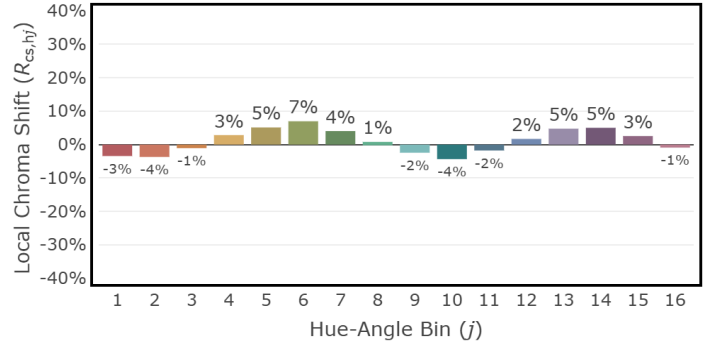
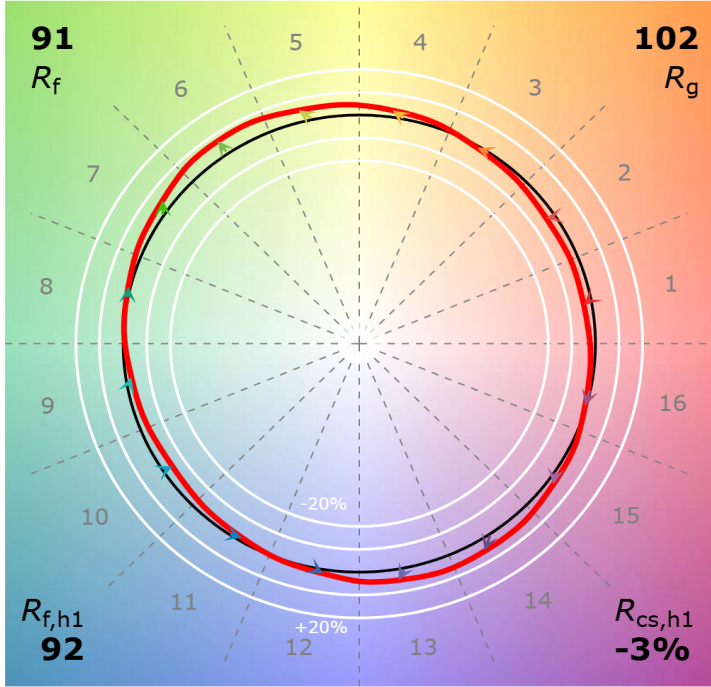
3000K

6500K

4" IC Adjustable 2400K, 750-1000 lm

CCT: 2404 K  
 $D_{uv}$ : 0.0016

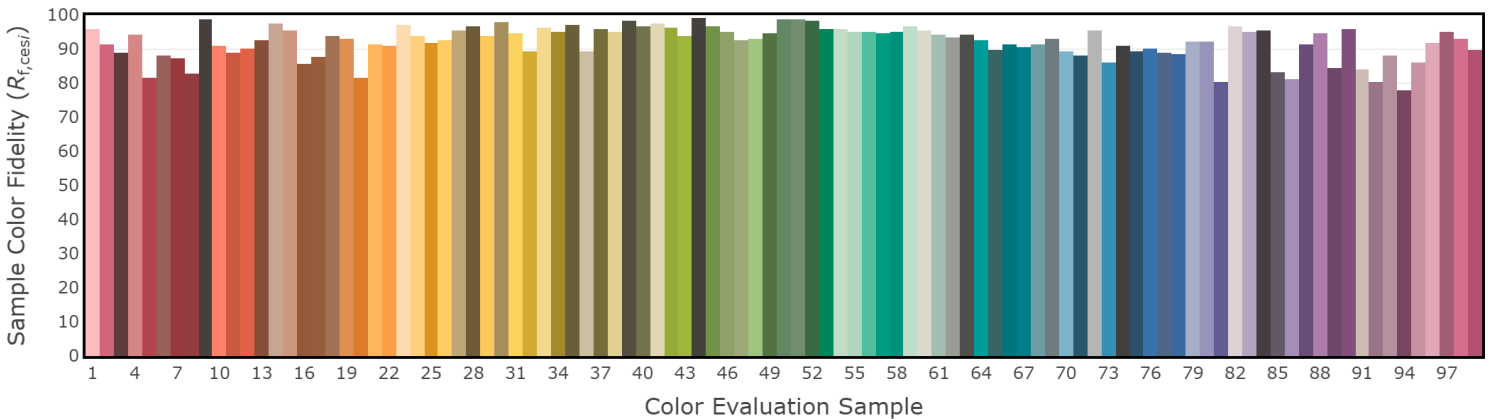
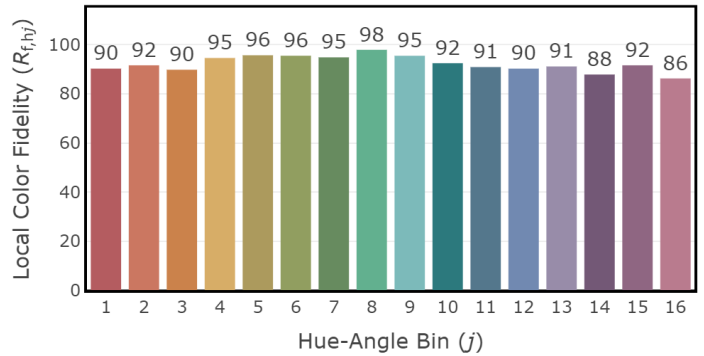
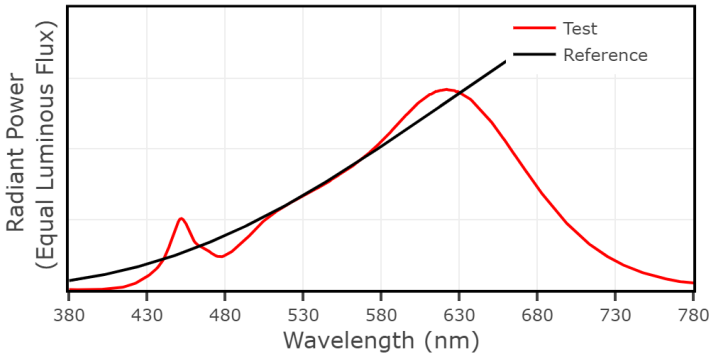
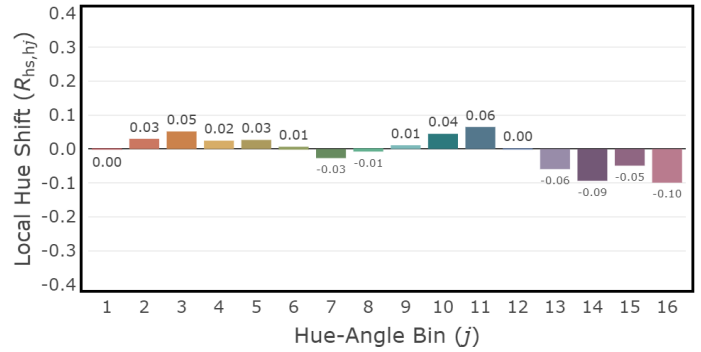
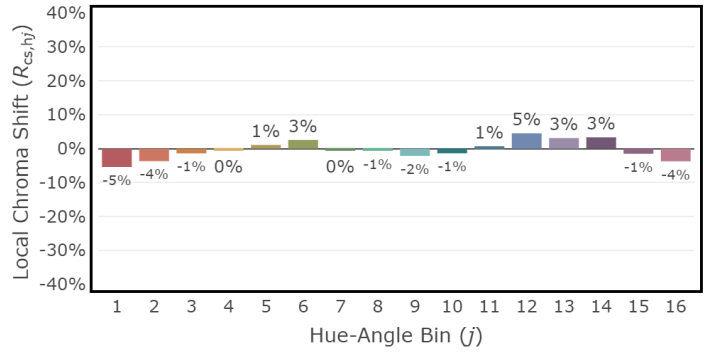
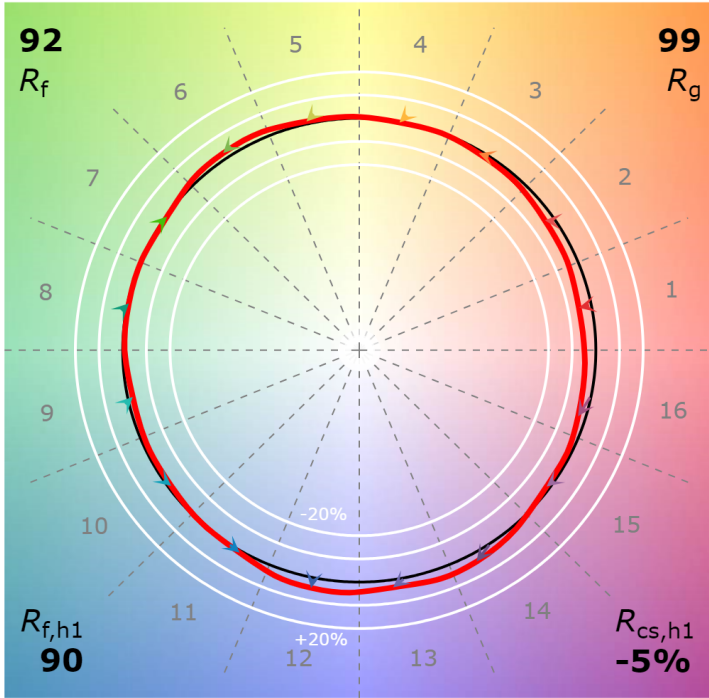
P2 V- F2



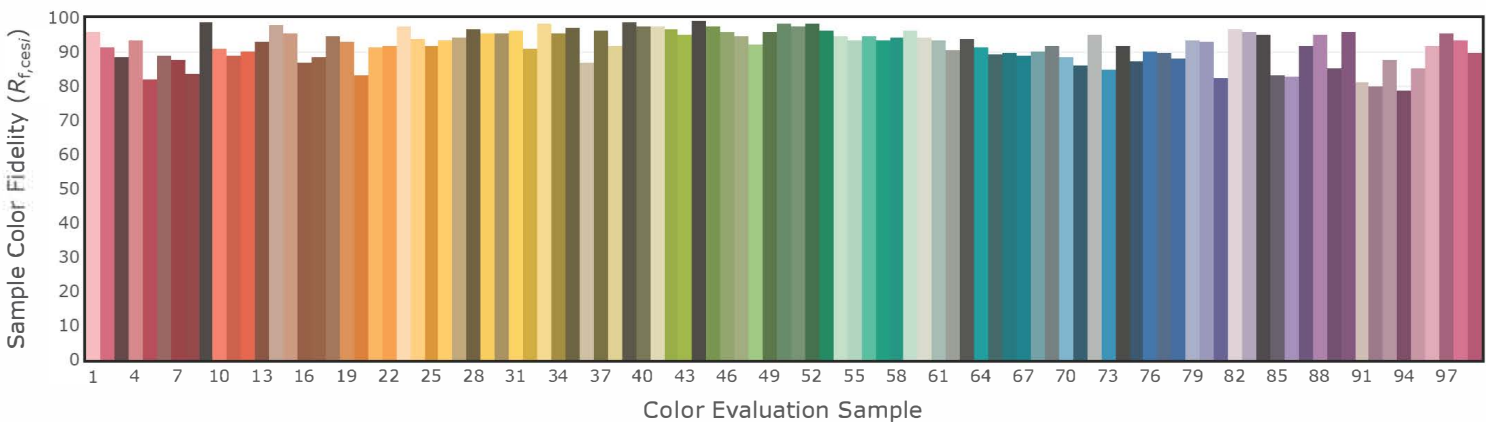
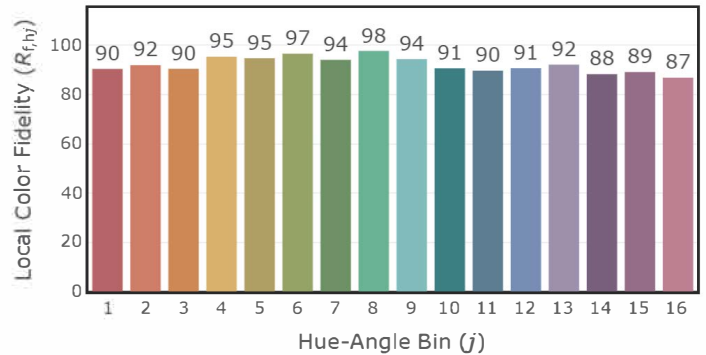
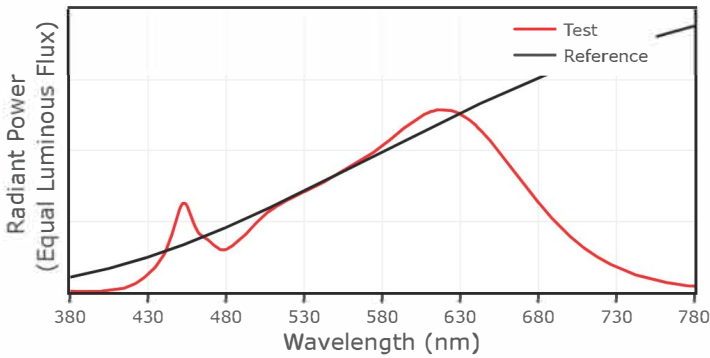
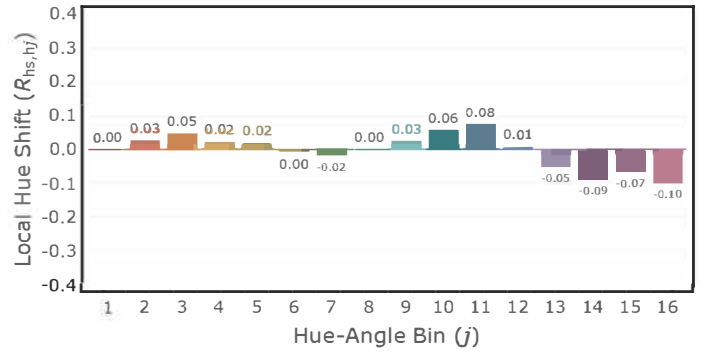
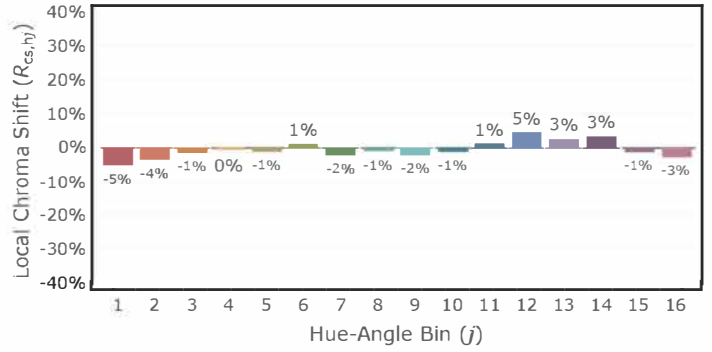
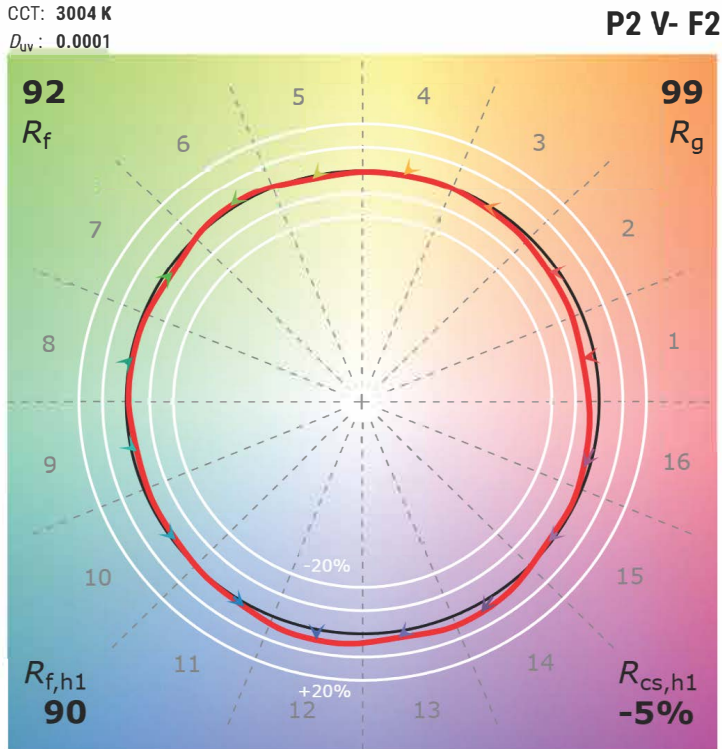
4" IC Adjustable 2700K, 750-1000 lm

CCT: 2699 K  
 $D_{uv}$ : 0.0001

P2 V- F2



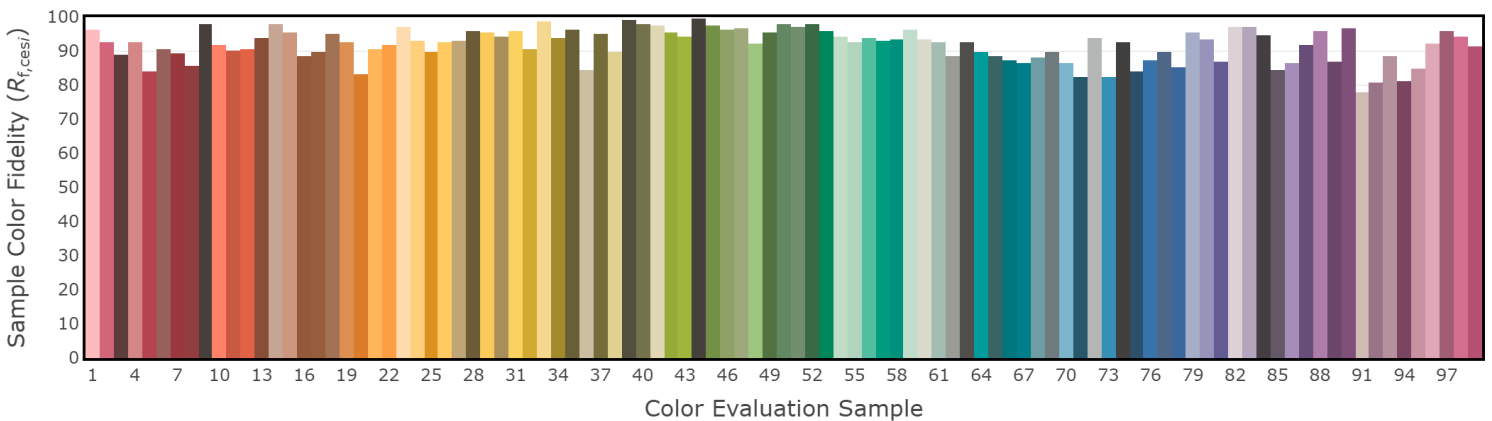
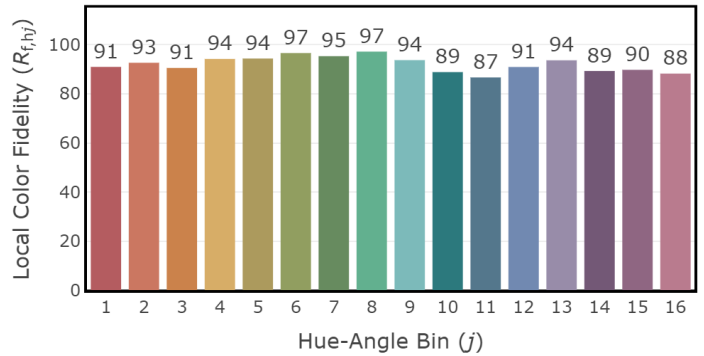
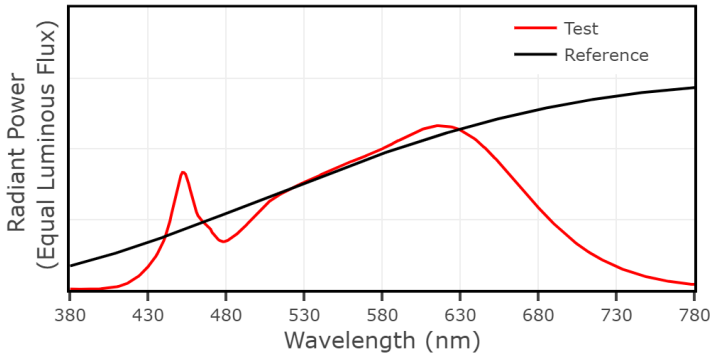
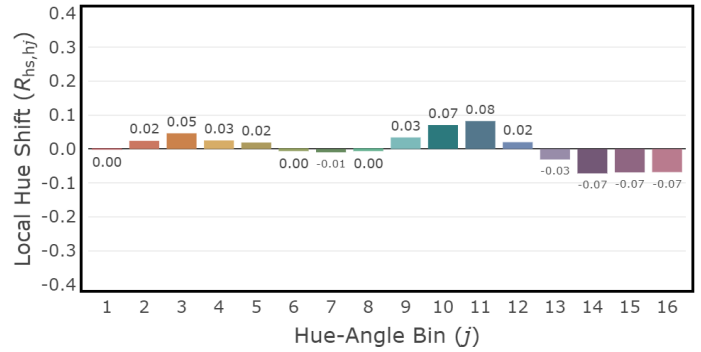
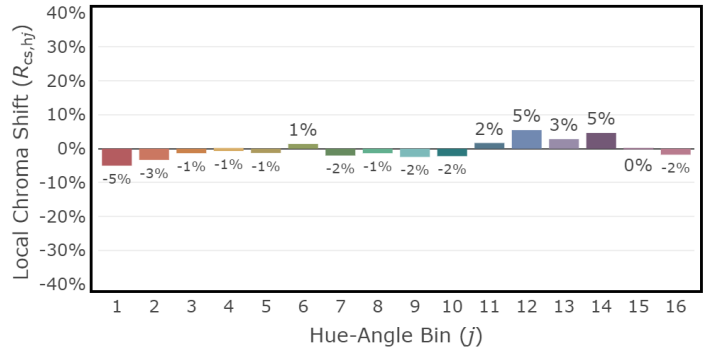
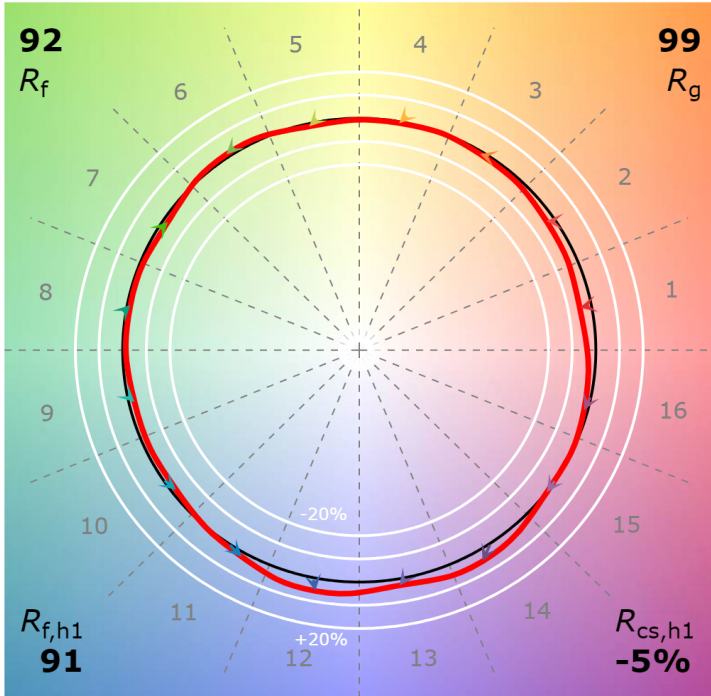
4" IC Adjustable 3000K, 750-1000 lm



4" IC Adjustable 3500K, 750-1000 lm

CCT: 3397 K  
 $D_{uv}$ : 0.0001

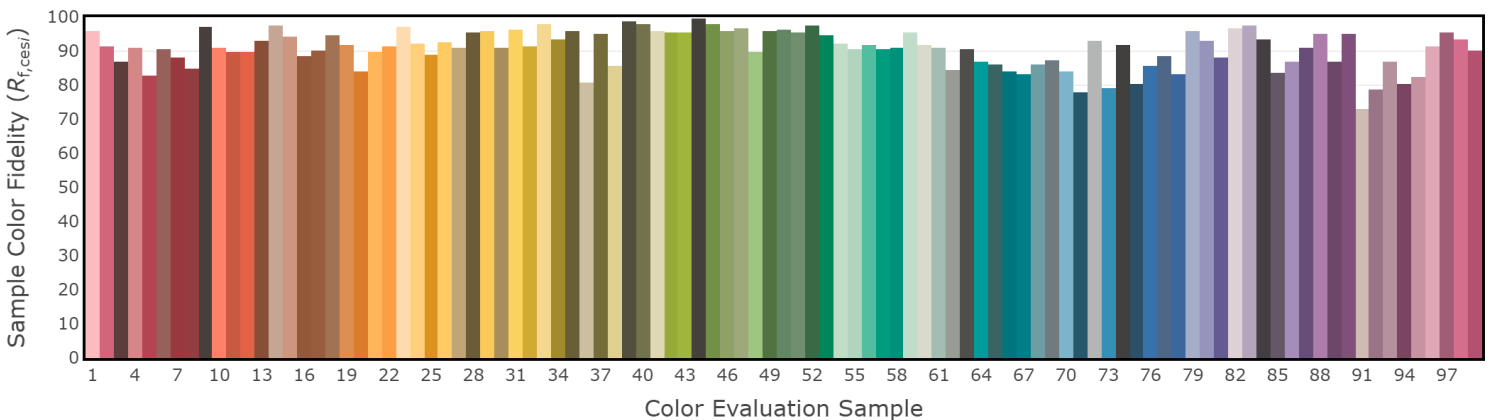
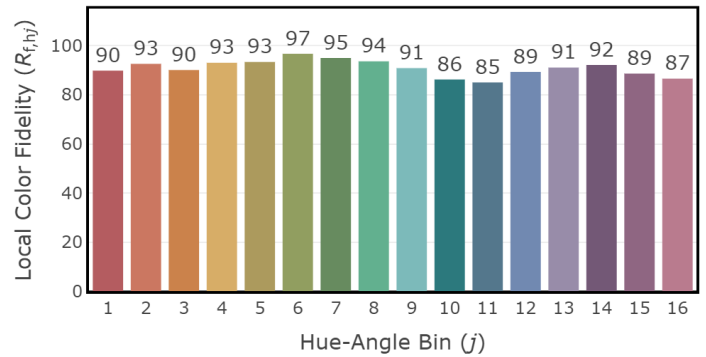
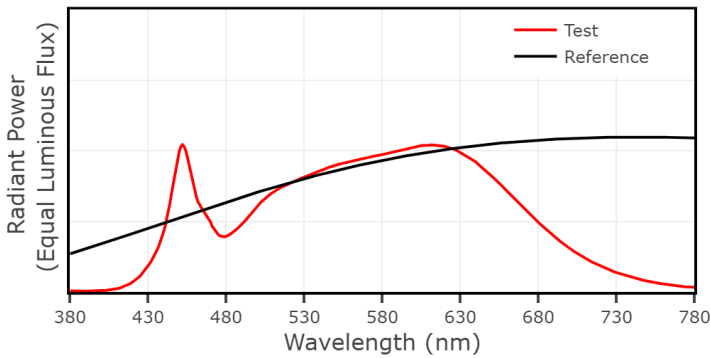
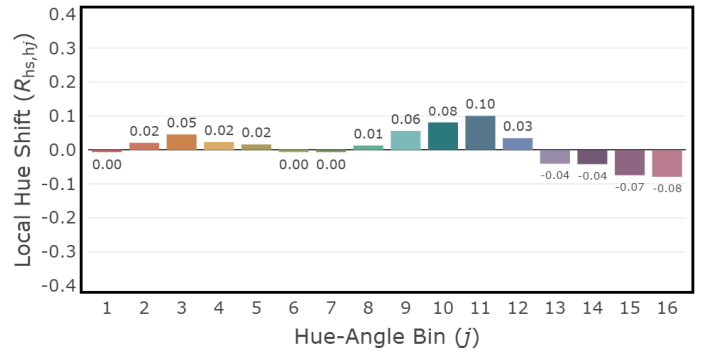
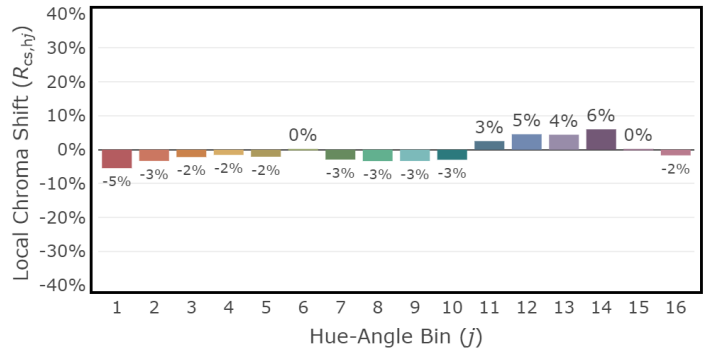
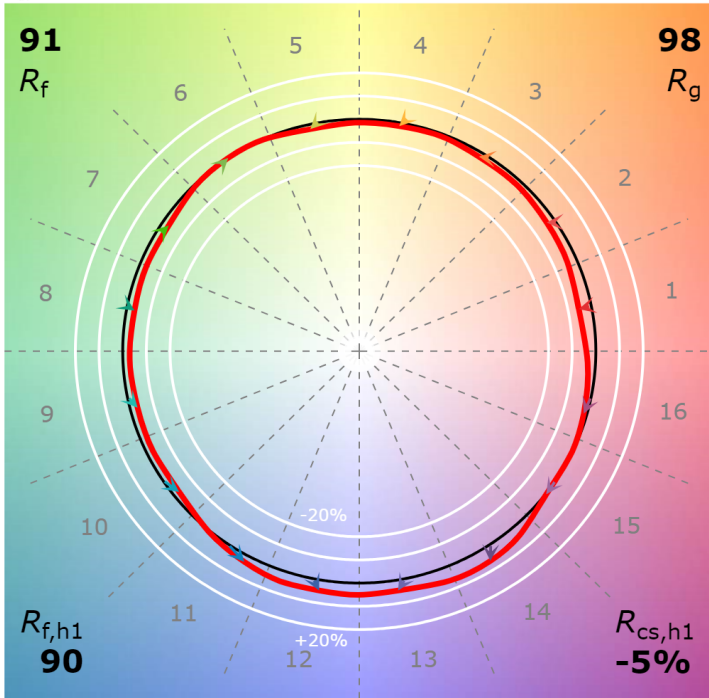
P2 V- F2



4" IC Adjustable 4000K, 750-1000 lm

CCT: 3900 K  
 $D_{uv}$ : 0.0019

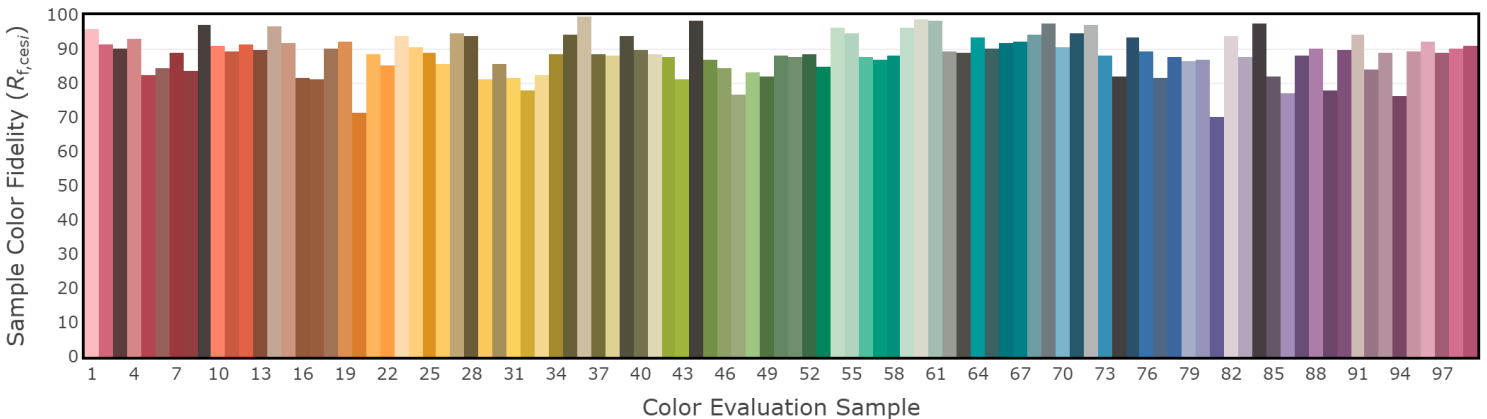
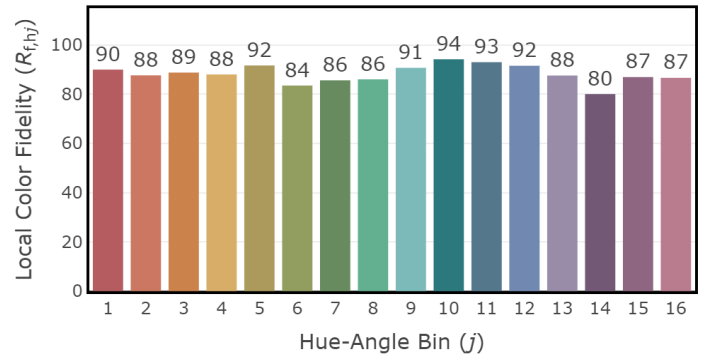
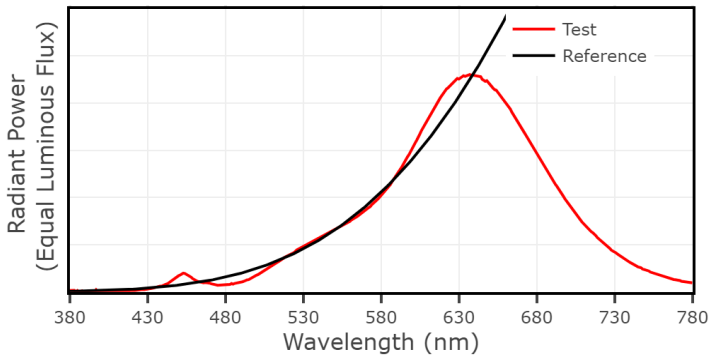
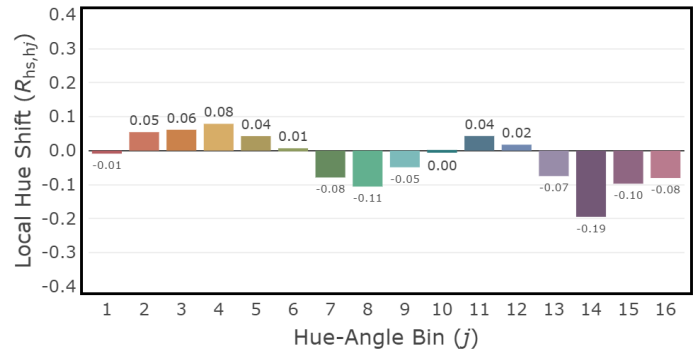
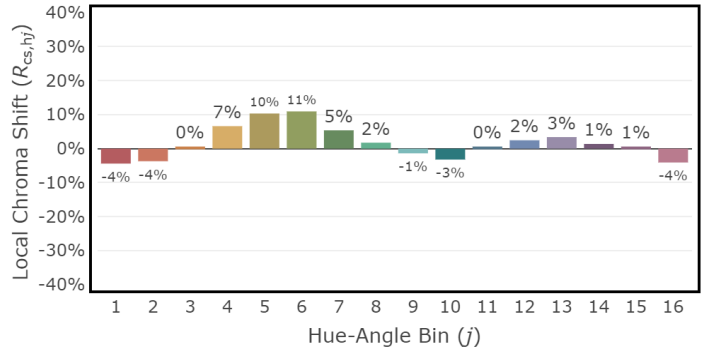
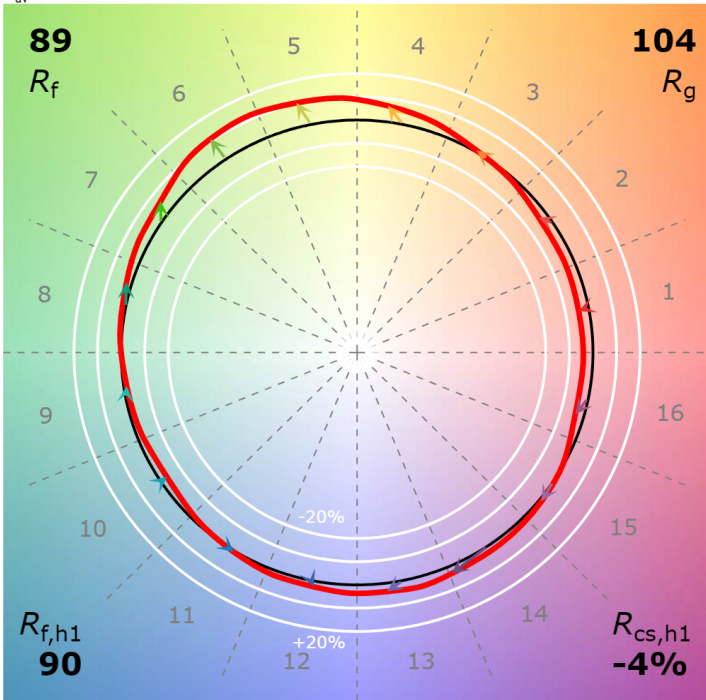
P2 V- F2



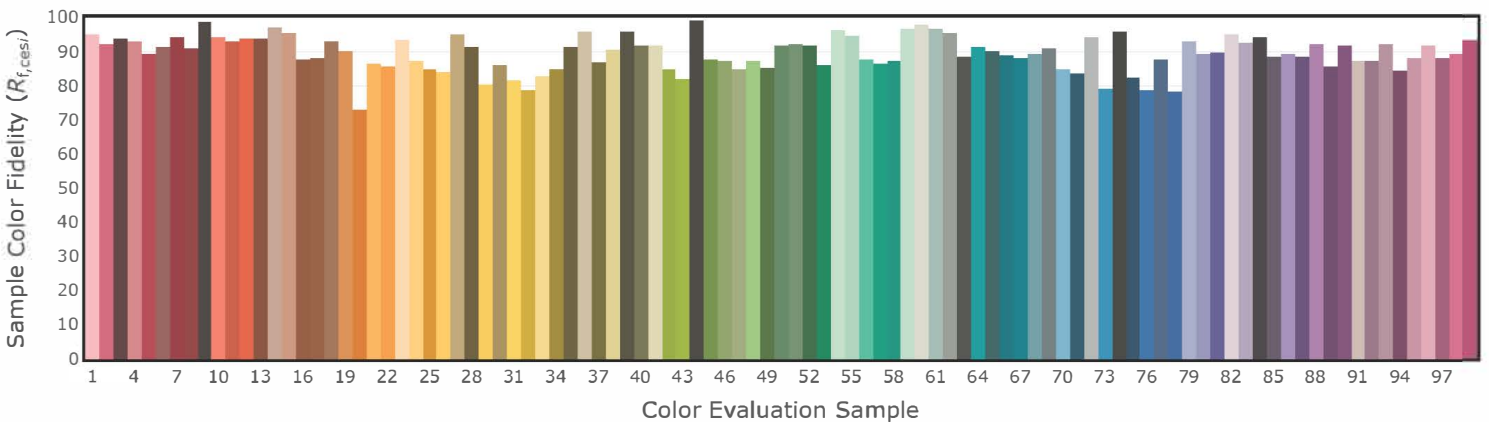
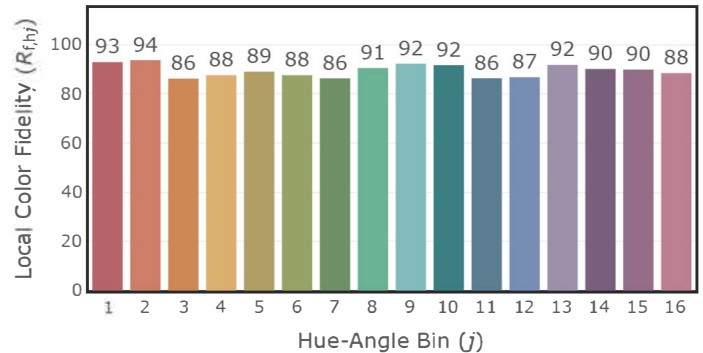
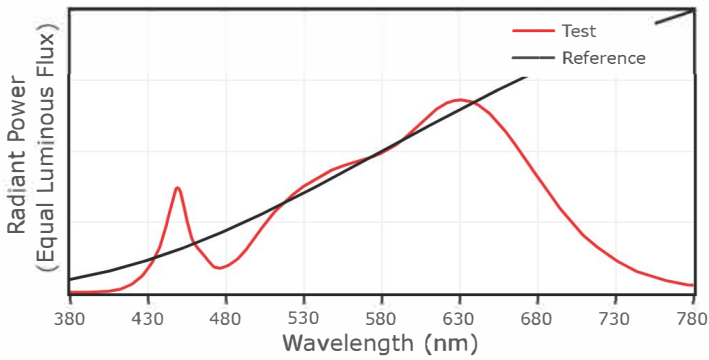
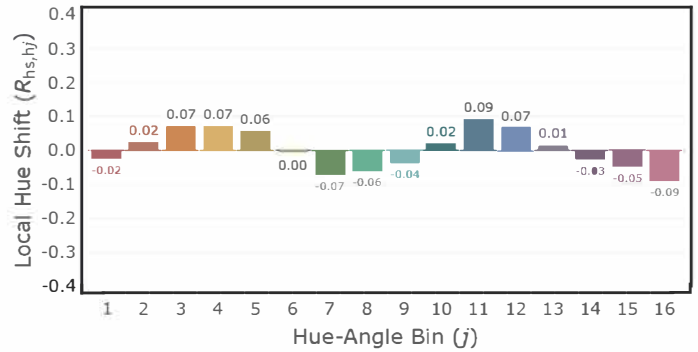
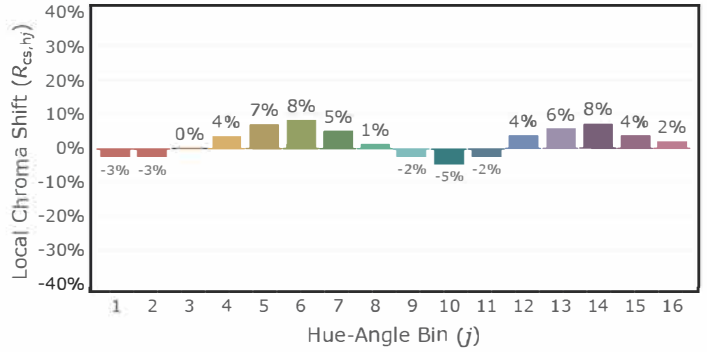
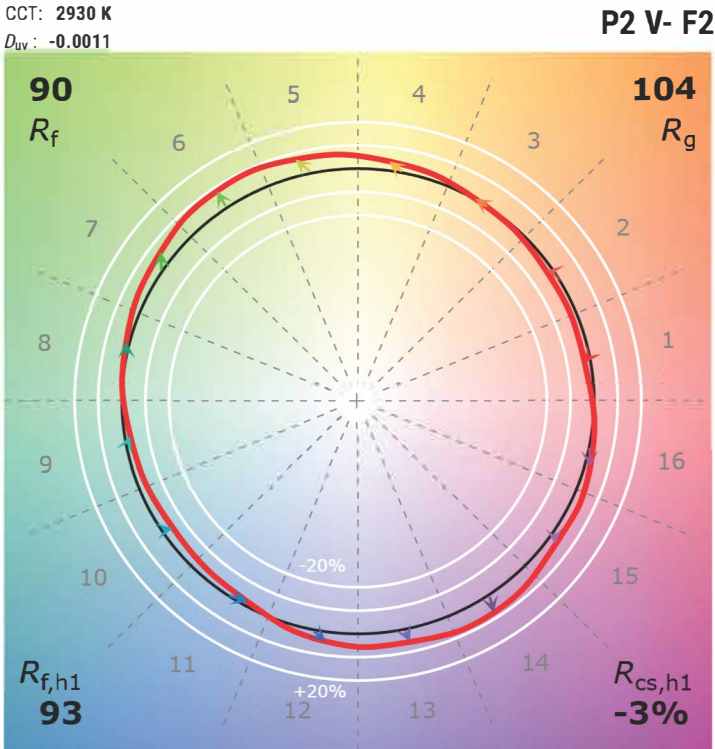
4" IC Adjustable - Warm Dim 1800K, 45 lm

CCT: 1812 K  
 $D_{uv}$ : -0.0005

P2 V- F3



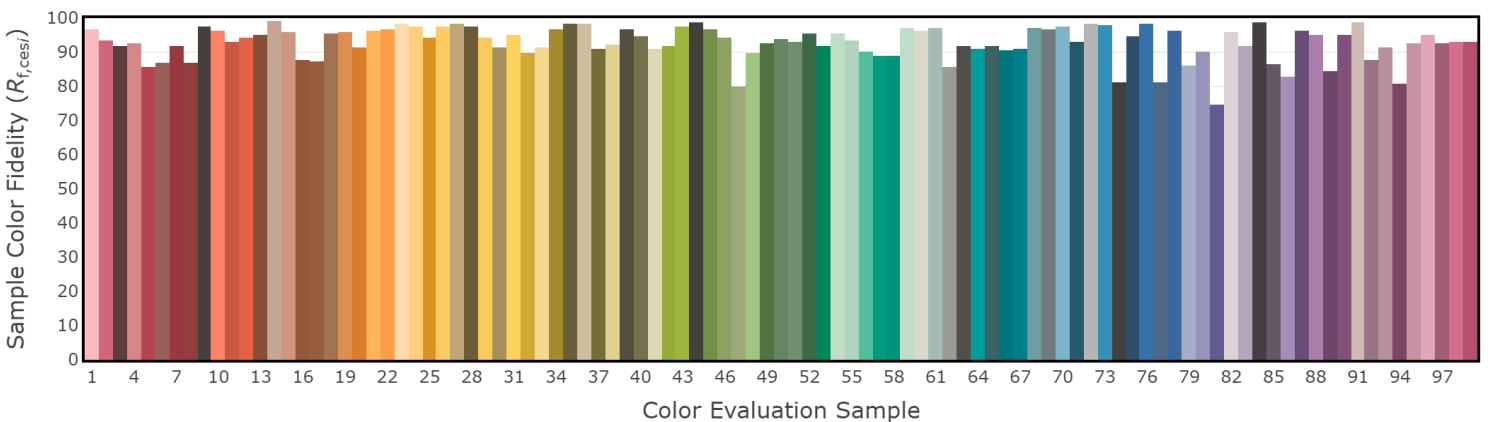
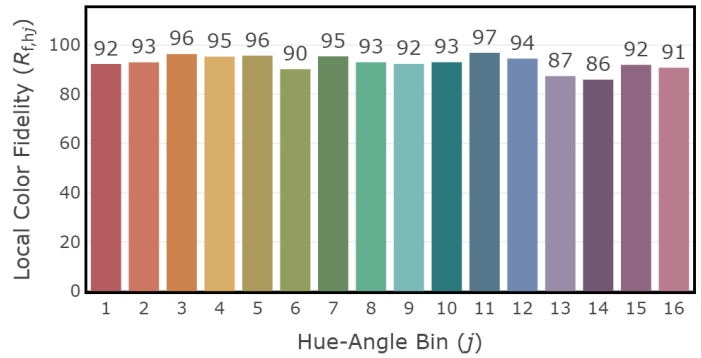
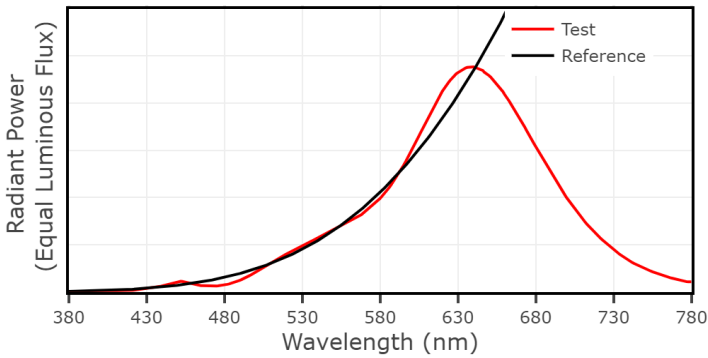
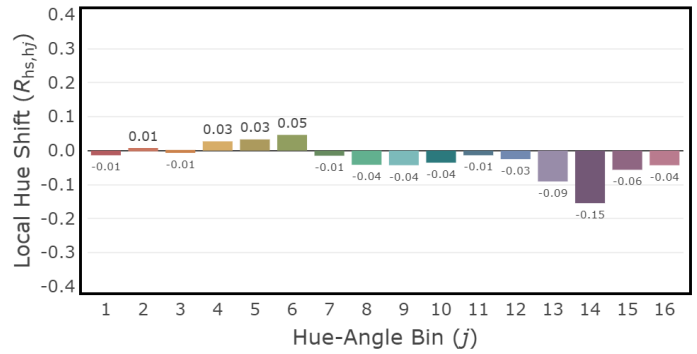
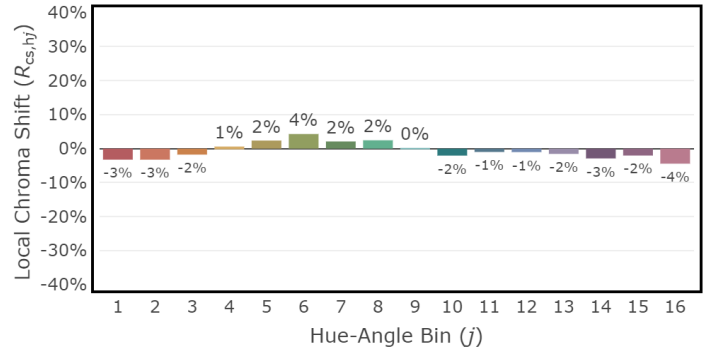
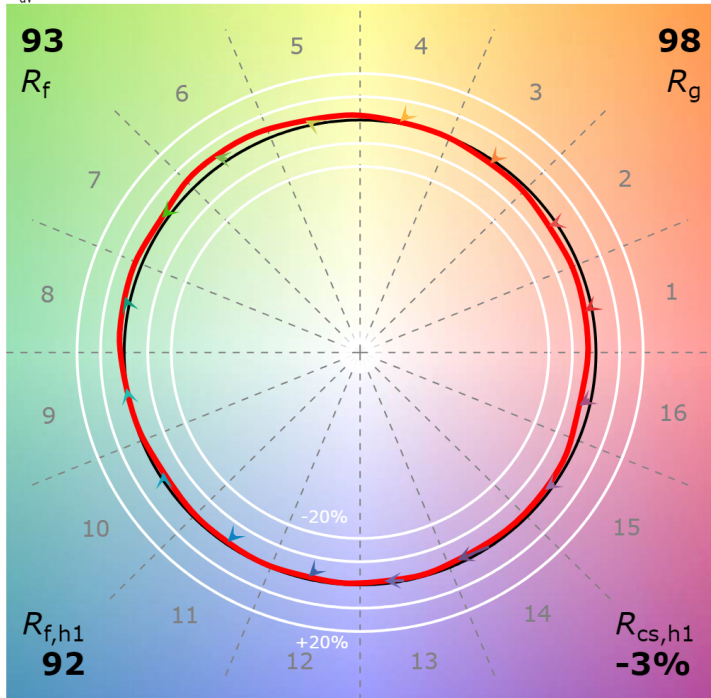
4" IC Adjustable - Warm Dim 3000K, 1000 lm



## 4" IC Adjustable - T1 Tunable White 1800K, 1000 lm

CCT: 1801 K  
 $D_{uv}$ : 0.0009

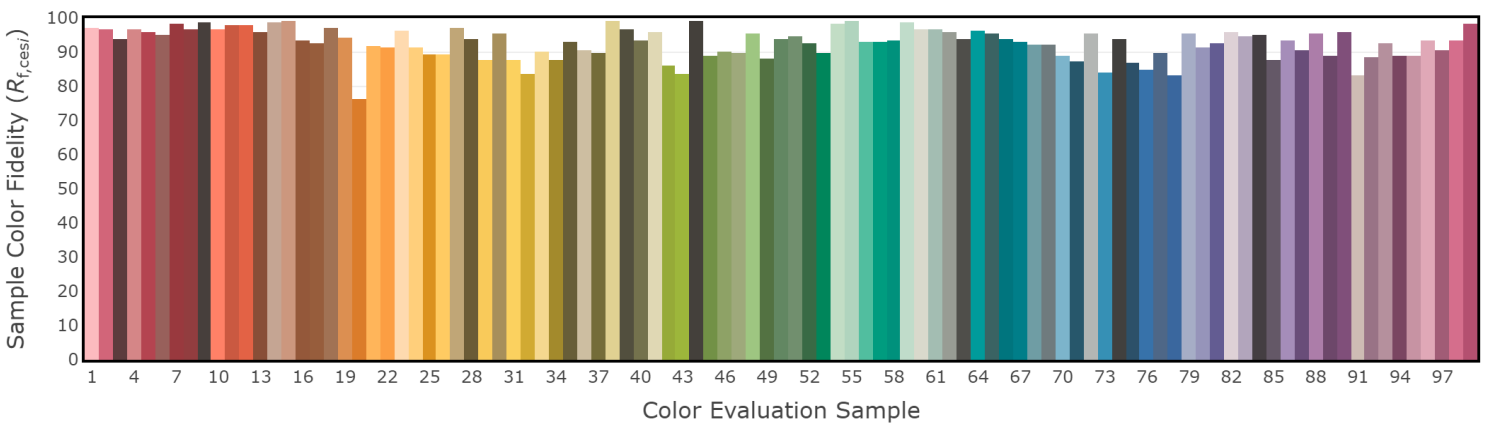
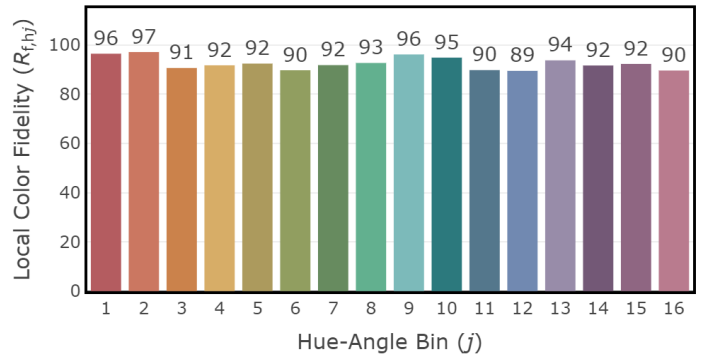
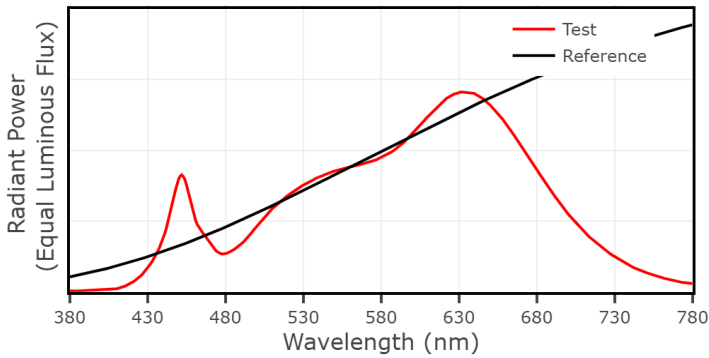
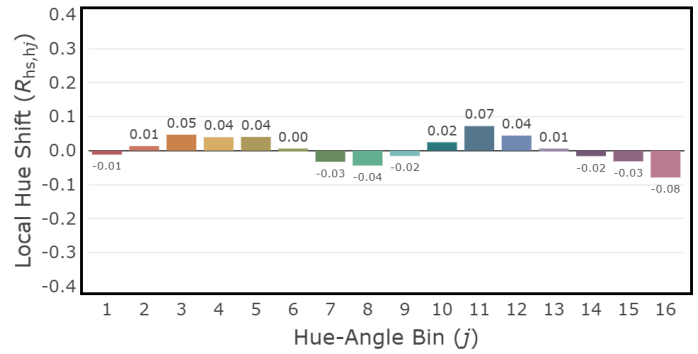
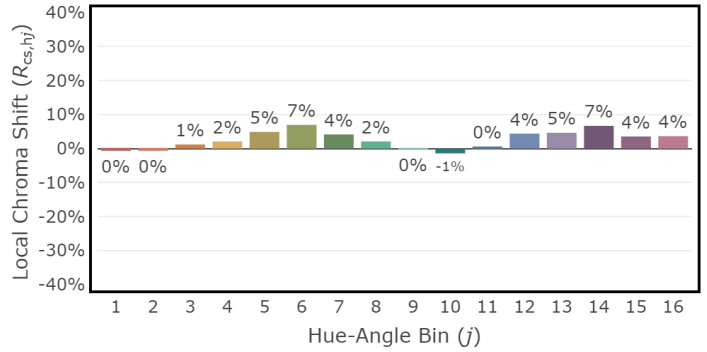
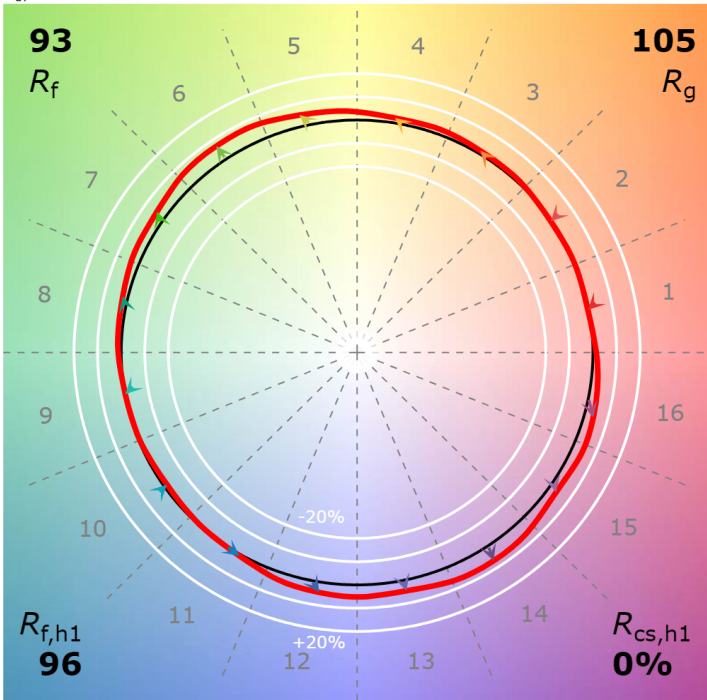
P2 V- F2



## 4" IC Adjustable - T1 Tunable White 3000K, 1000 lm

CCT: 3001 K  
 $D_{uv}$ : -0.0051

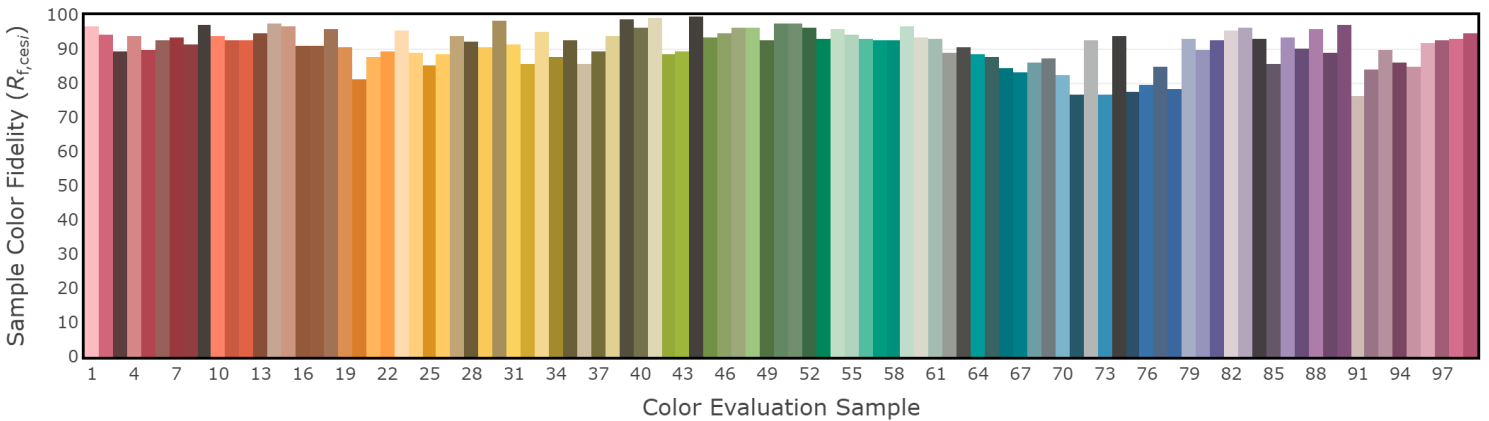
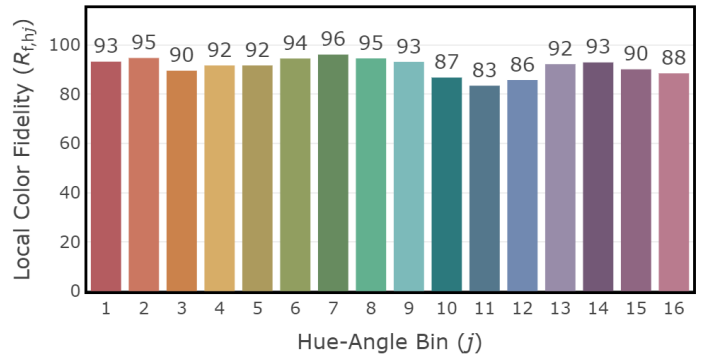
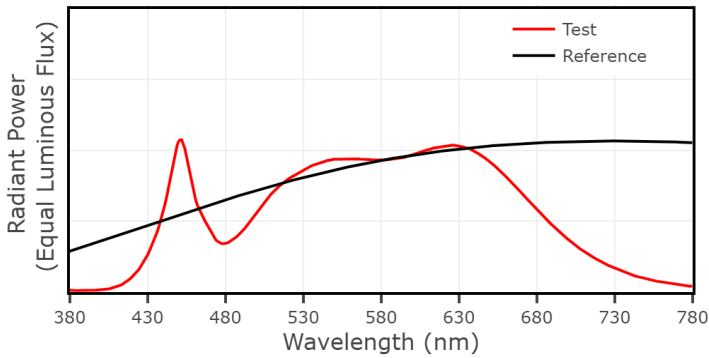
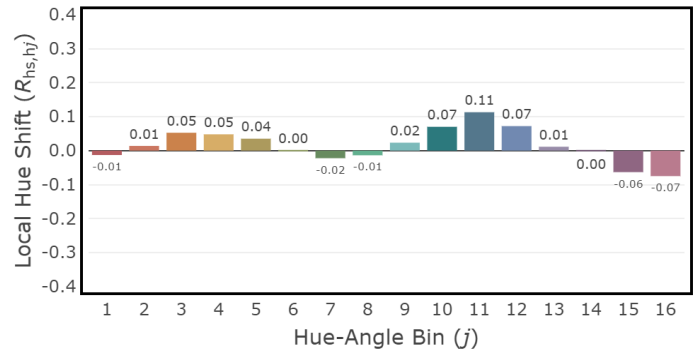
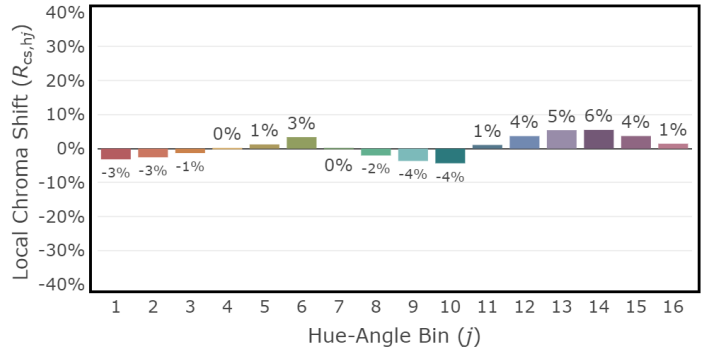
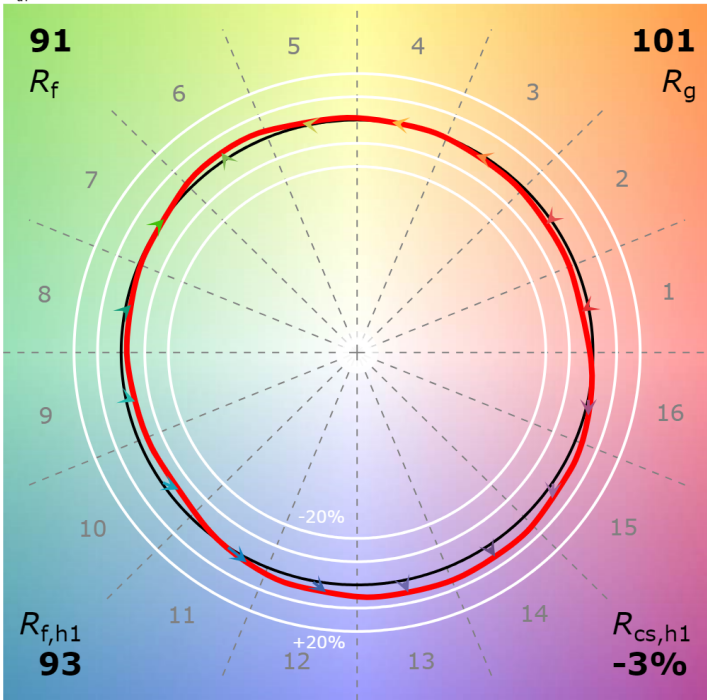
P1 V3 F2



## 4" IC Adjustable - T1 Tunable White 4000K, 1000 lm

CCT: 3974 K  
 $D_{uv}$ : 0.0009

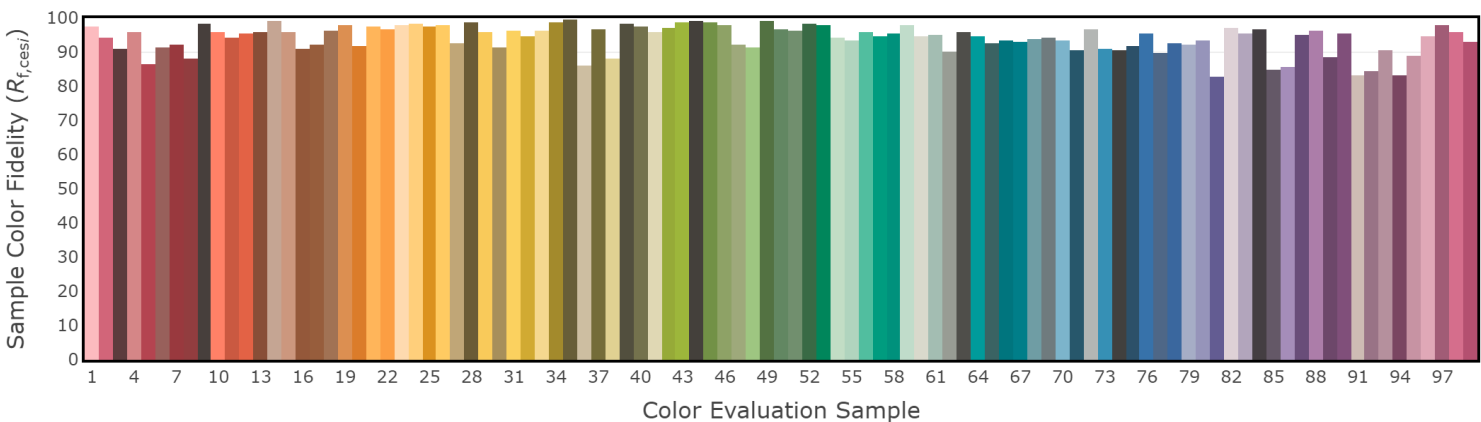
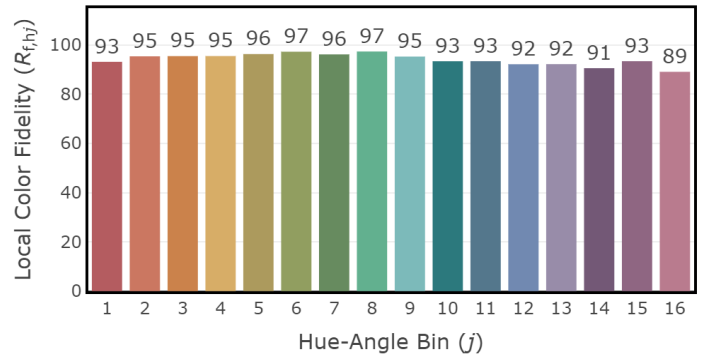
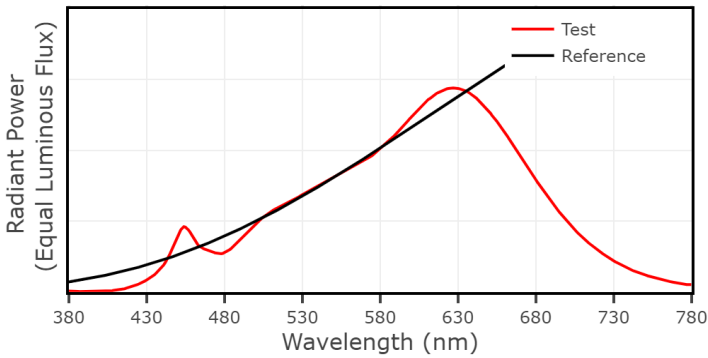
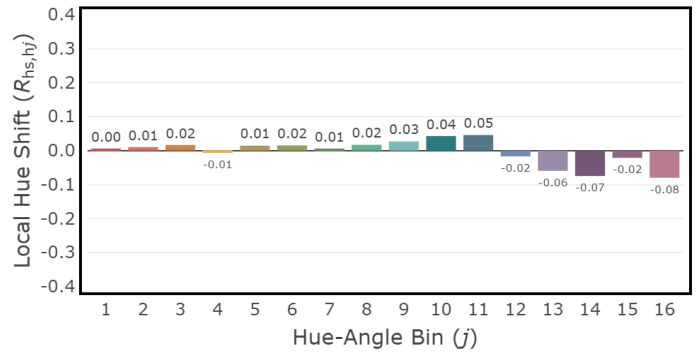
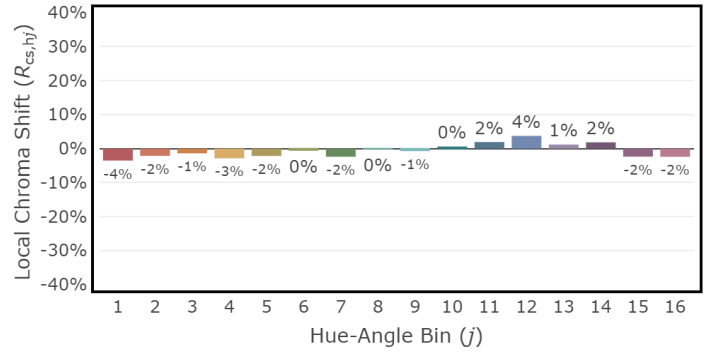
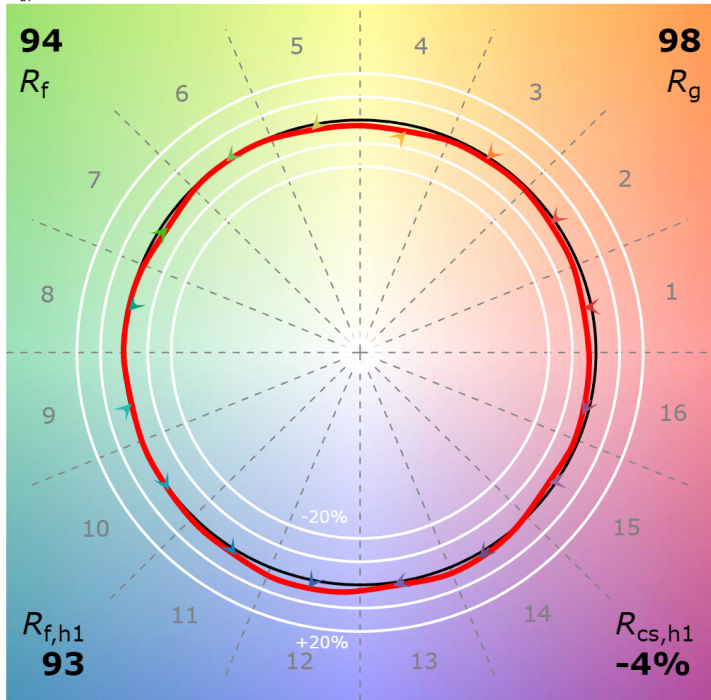
P2 V- F2



## 4" IC Adjustable - T2 Tunable White 2700K, 1000 lm

CCT: 2730 K  
 $D_{UV}$ : 0.0013

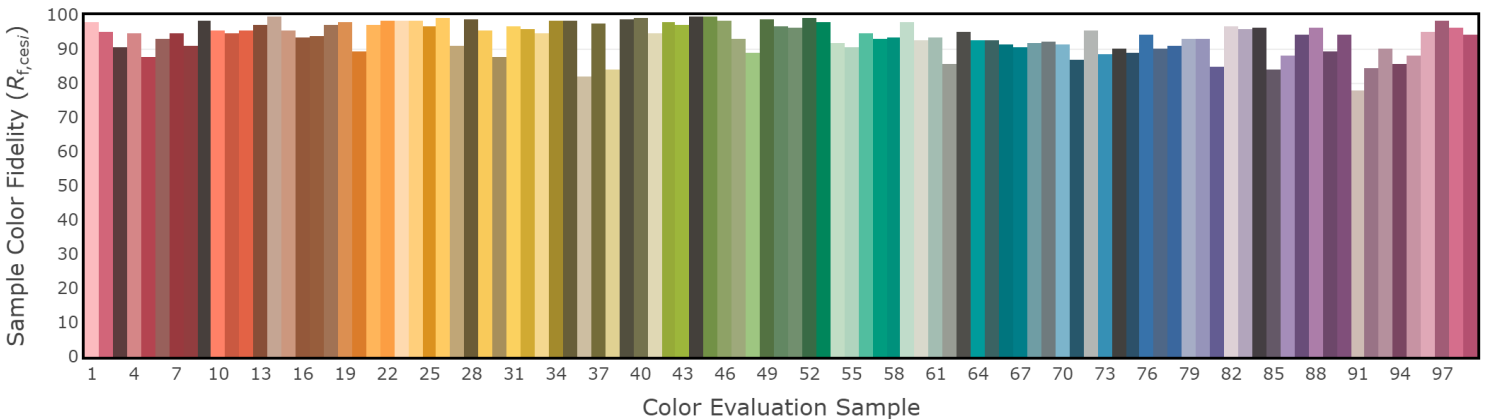
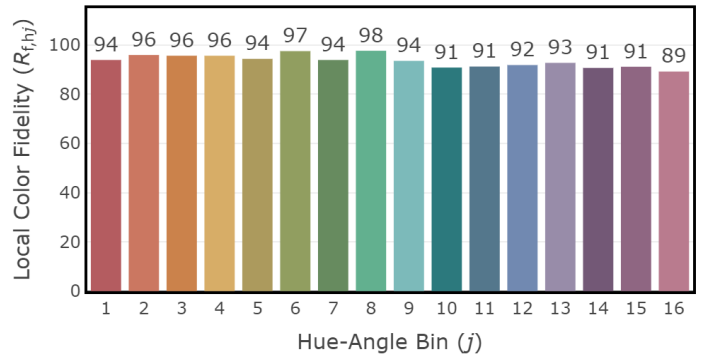
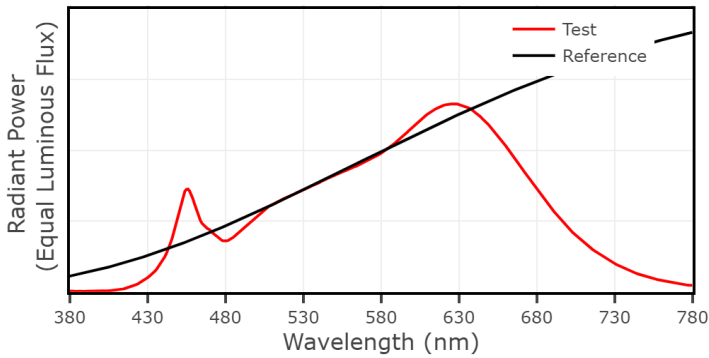
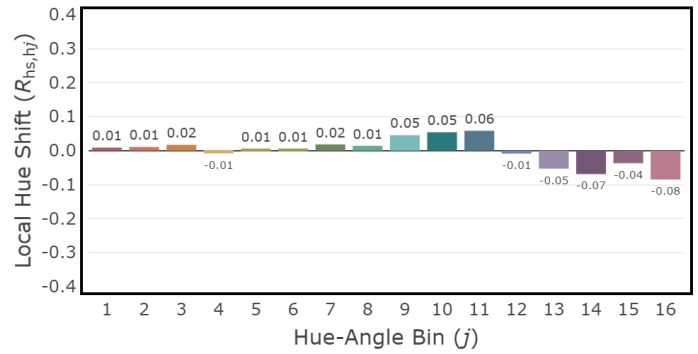
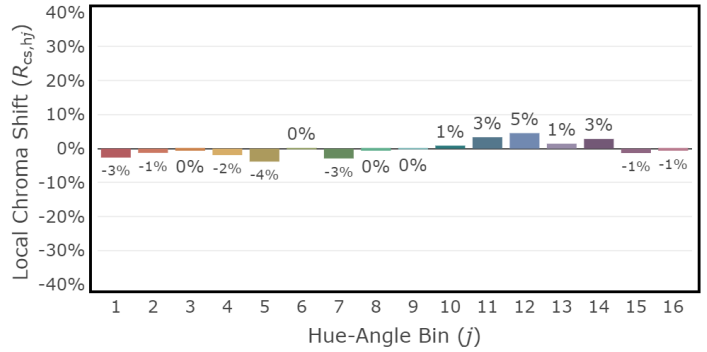
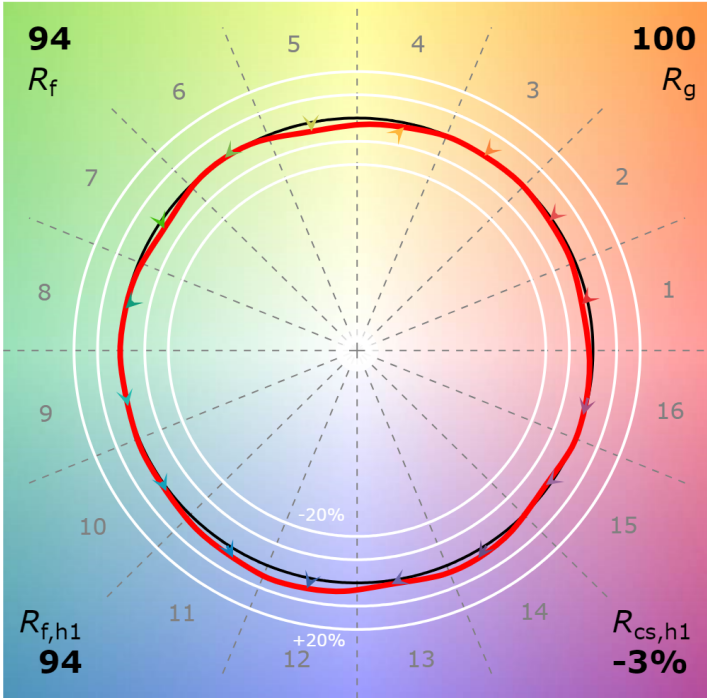
P2 V- F2



## 4" IC Adjustable - T2 Tunable White 3000K, 1000 lm

CCT: 3038 K  
 $D_{uv}$ : -0.0016

P2 V- F2



## 4" IC Adjustable - T2 Tunable White 6500K, 1000 lm

CCT: 6267 K  
 $D_{uv}$ : 0.0026

P2 V- F2

