



4" Adjustable Cylinder

TM-30 Color Rendition Reports

2400K

750-1000 lm

2700K

750-1000 lm

3000K

750-1000 lm

3500K

750-1000 lm

4000K

750-1000 lm

Warm Dim

1800K

3000K

T1 Tunable White

1800K

3000K

4000K

T2 Tunable White

2700K

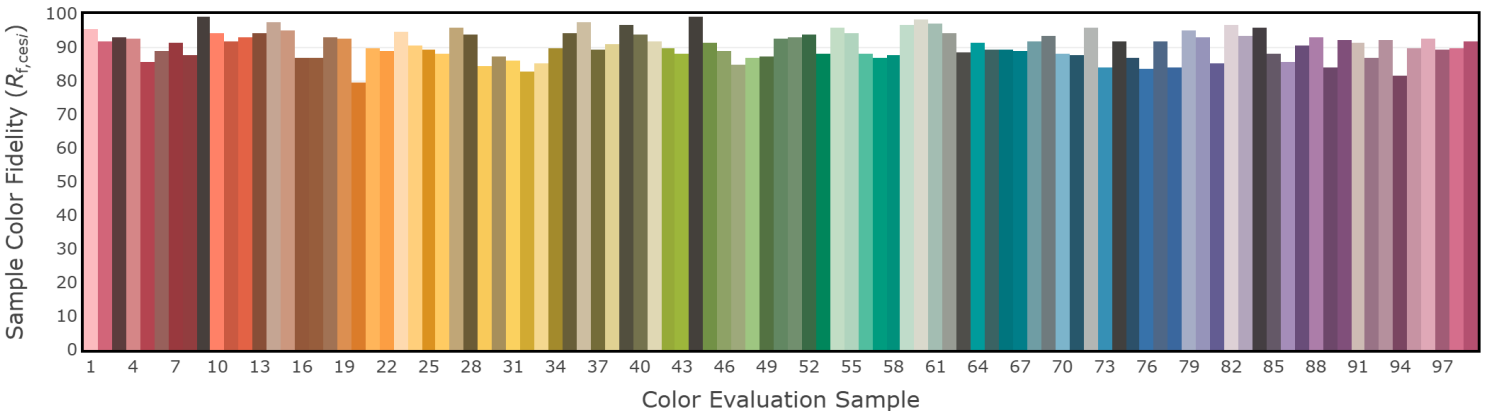
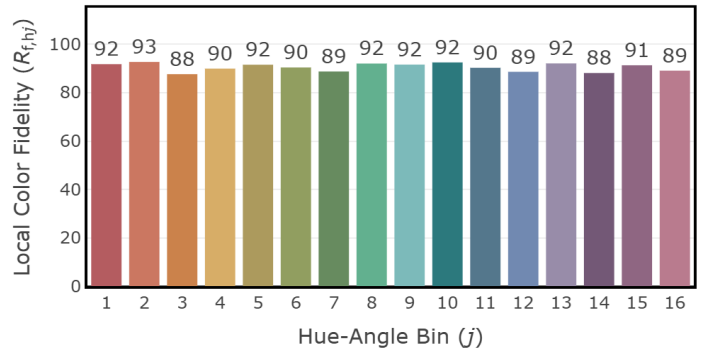
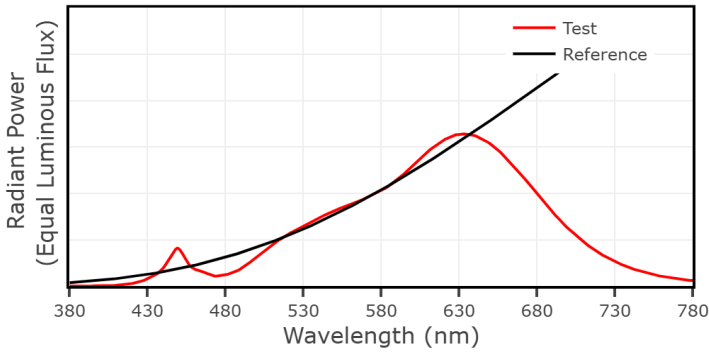
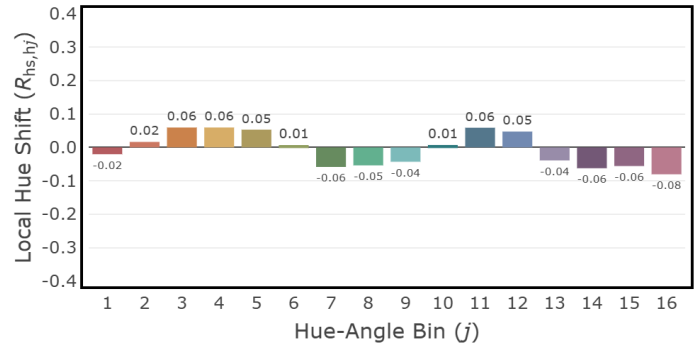
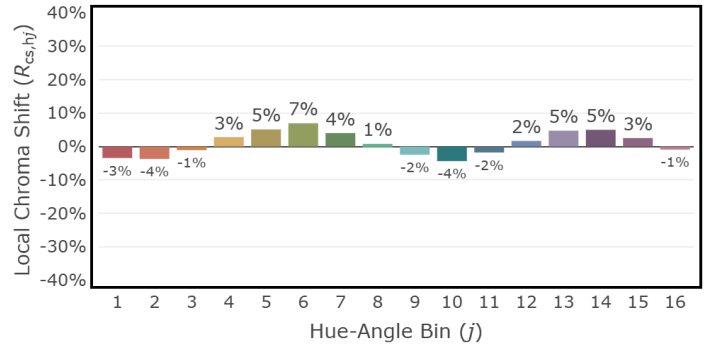
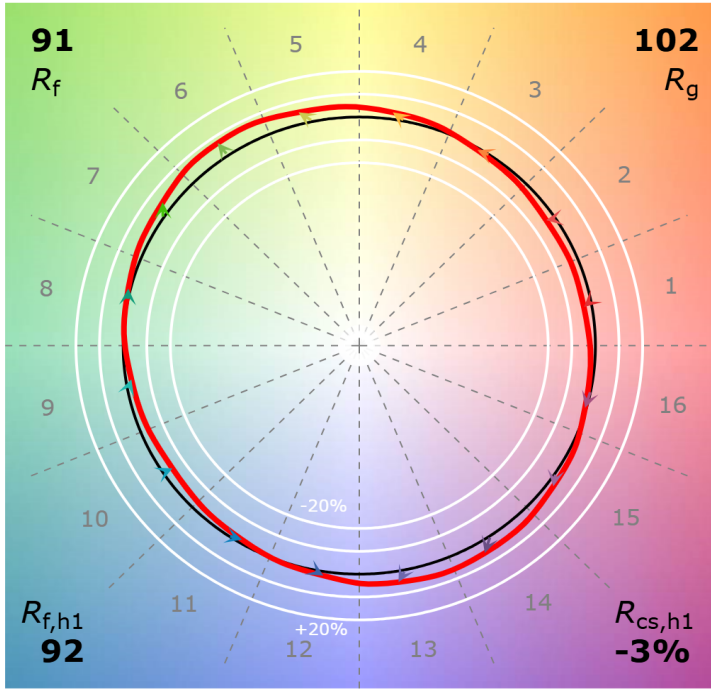
3000K

6500K

4" Adjustable Cylinder 2400K, 750-1000 lm

CCT: 2404 K
 D_{uv} : 0.0016

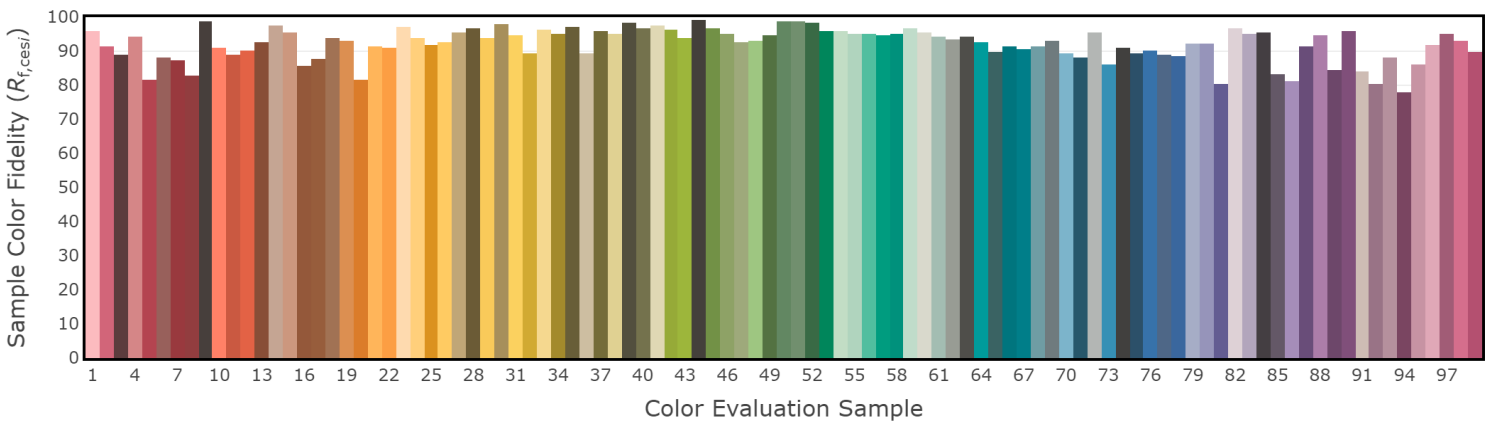
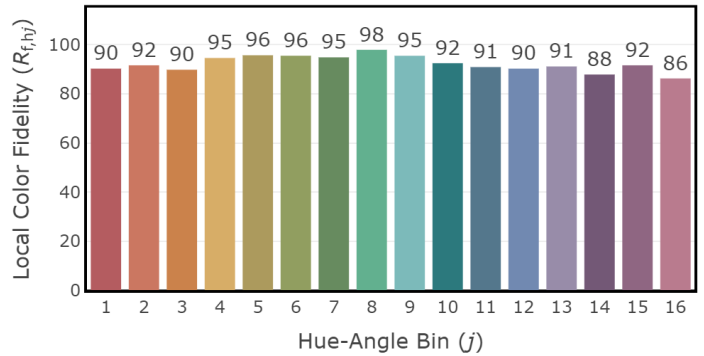
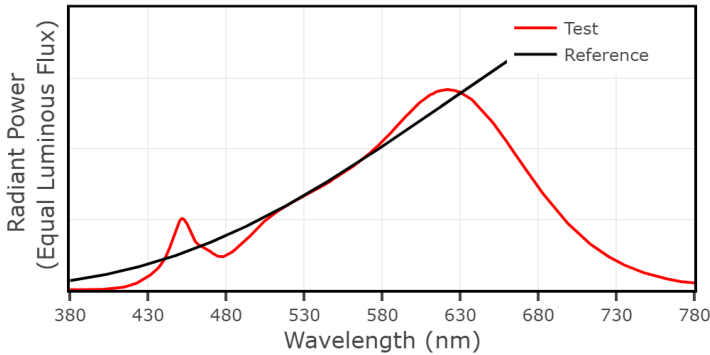
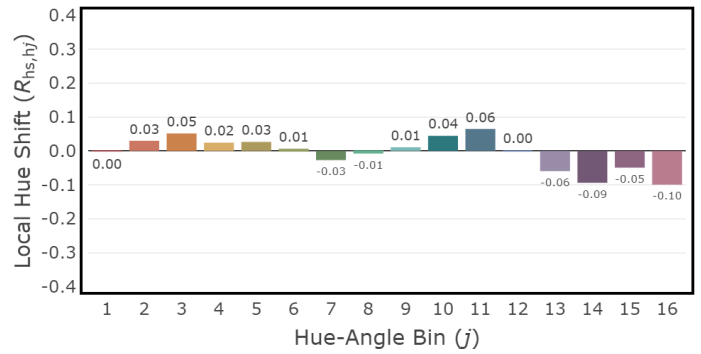
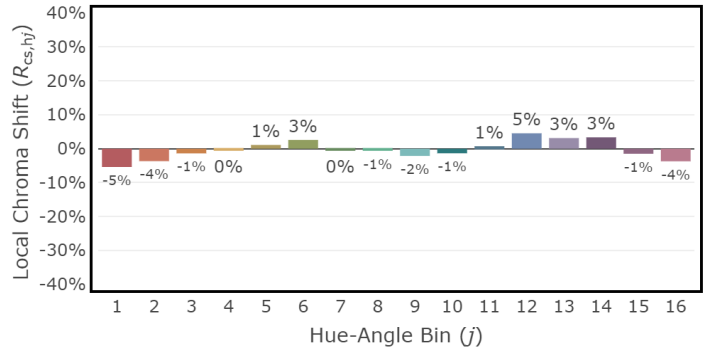
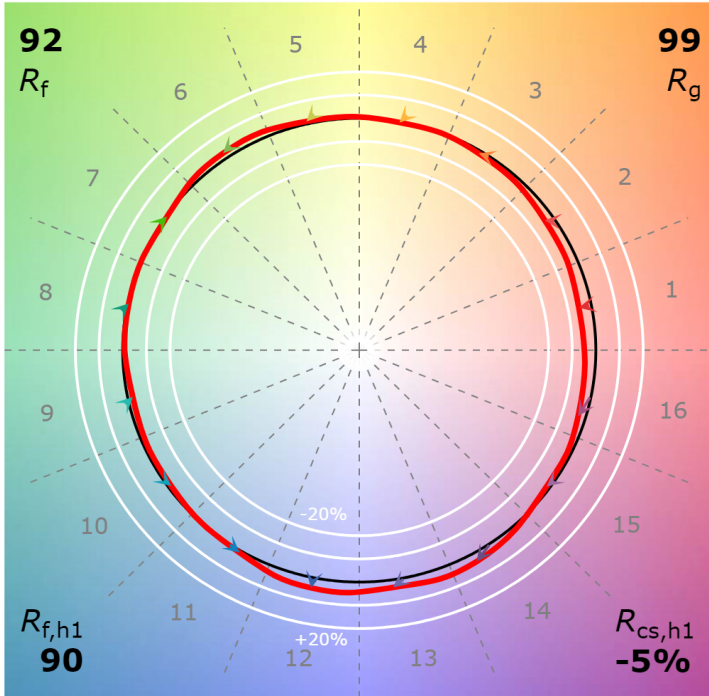
P2 V- F2



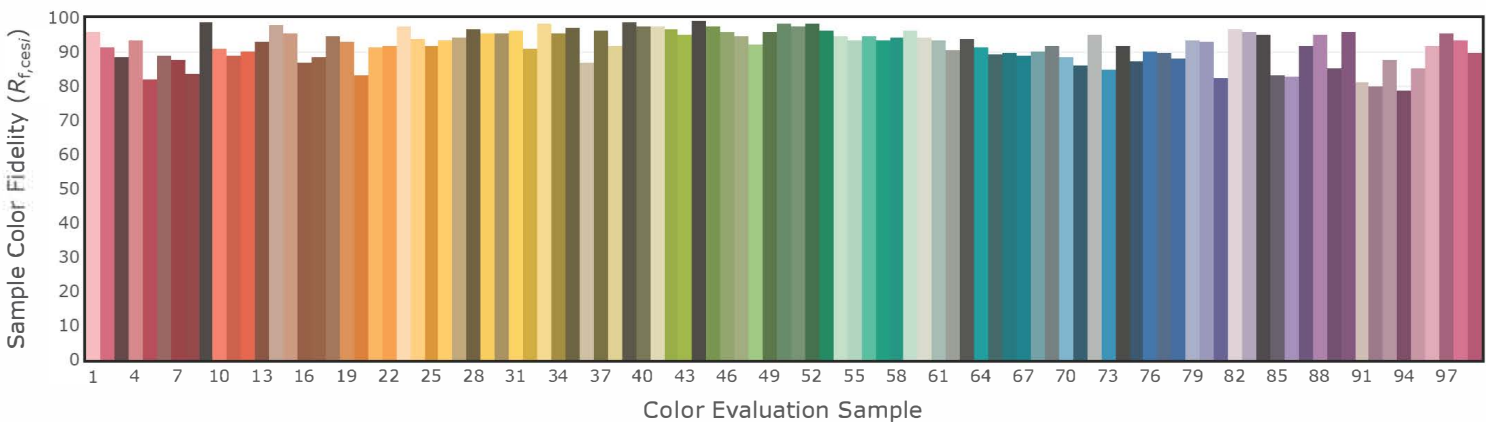
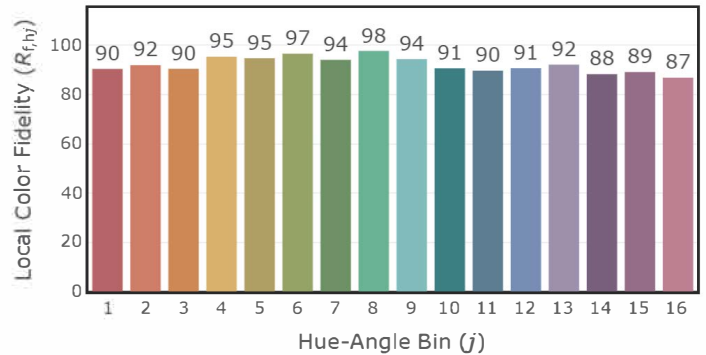
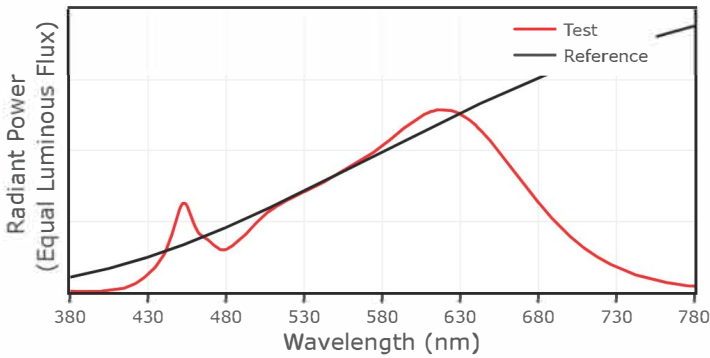
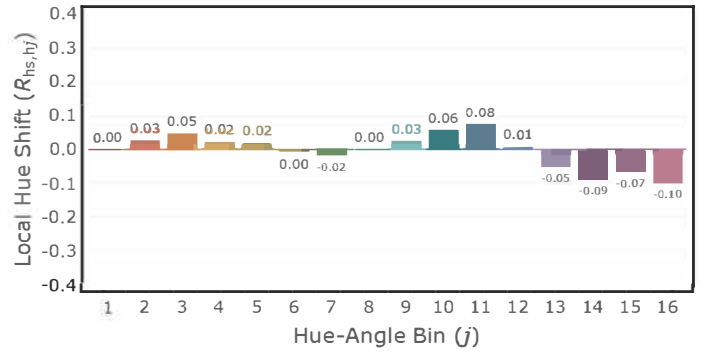
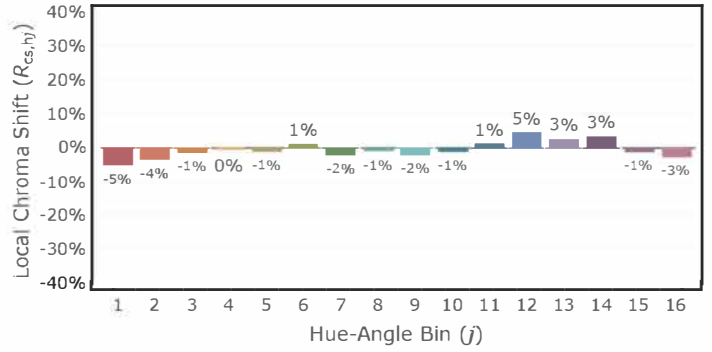
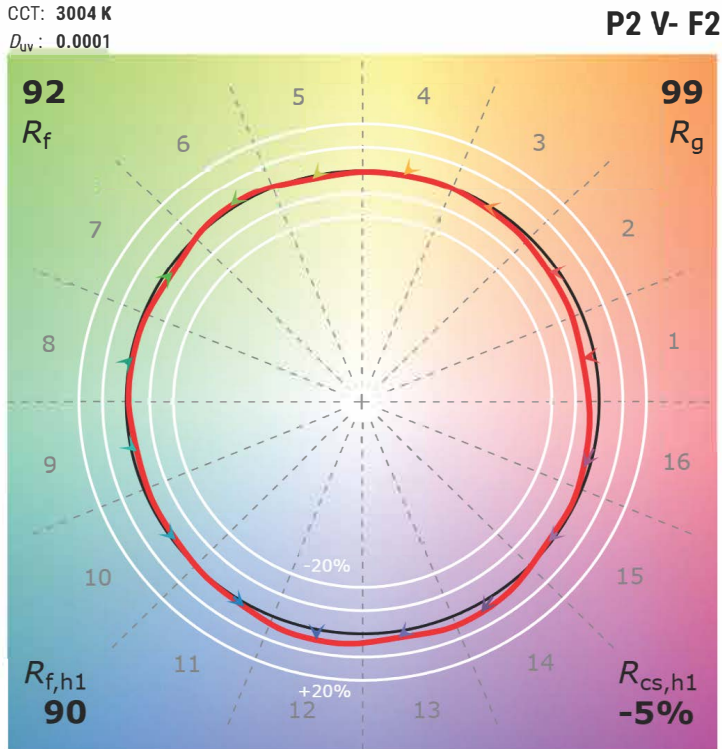
4" Adjustable Cylinder 2700K, 750-1000 lm

CCT: 2699 K
 D_{uv} : 0.0001

P2 V- F2



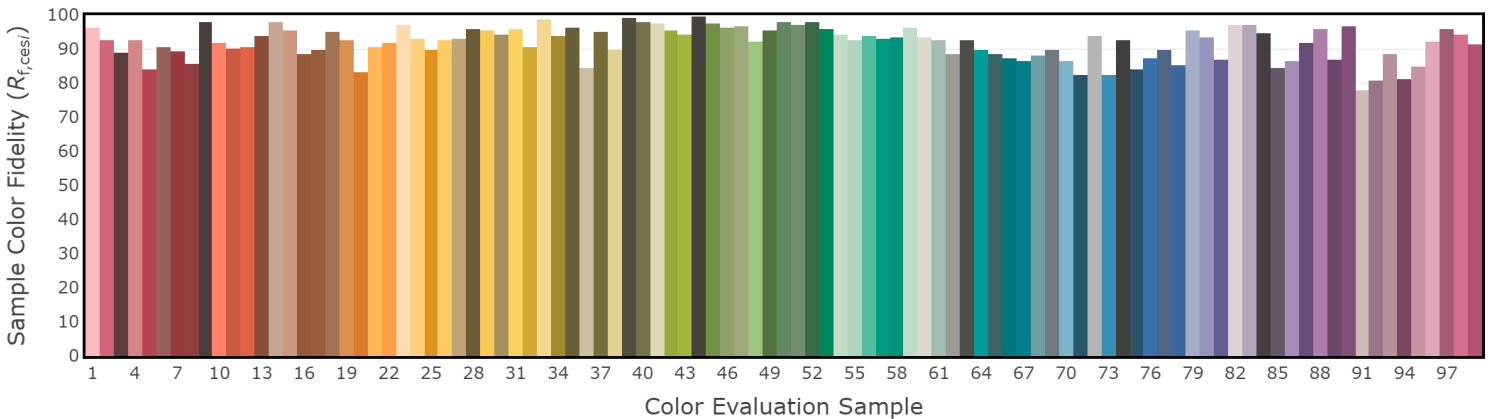
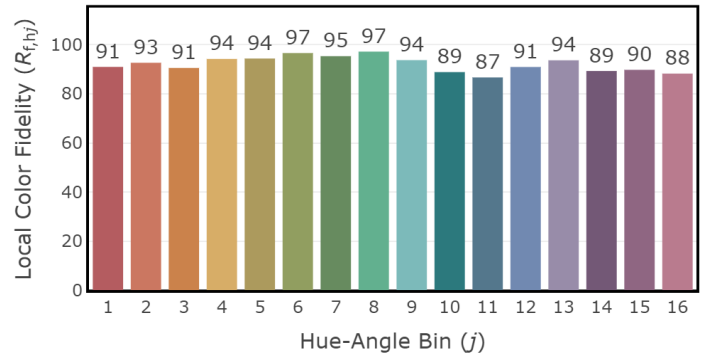
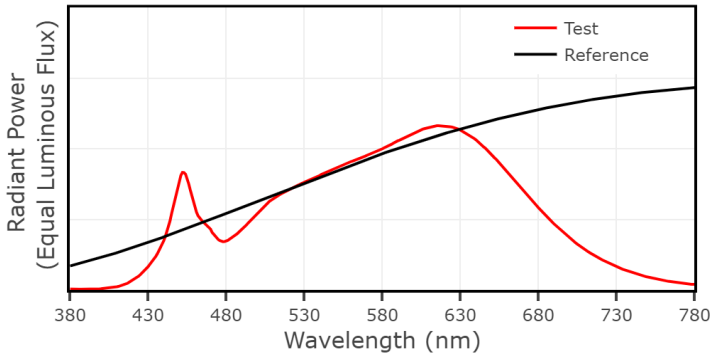
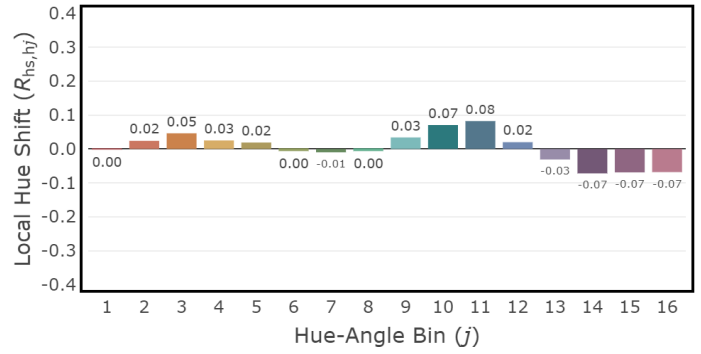
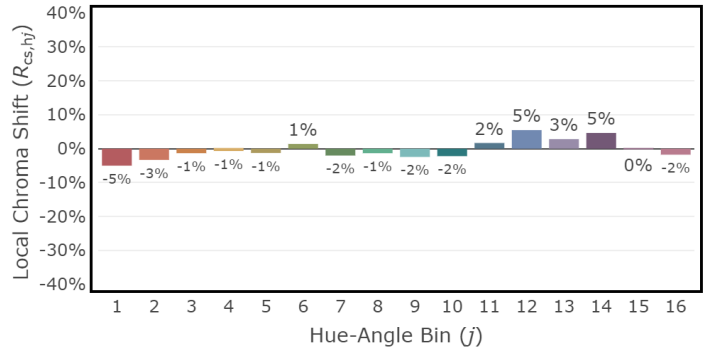
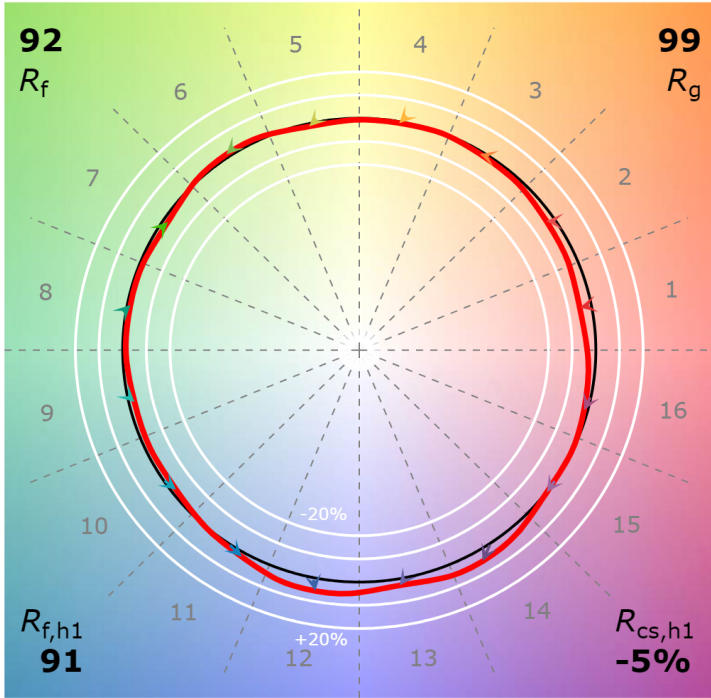
4" Adjustable Cylinder 3000K, 750-1000 lm



4" Adjustable Cylinder 3500K, 750-1000 lm

CCT: 3397 K
 D_{uv} : 0.0001

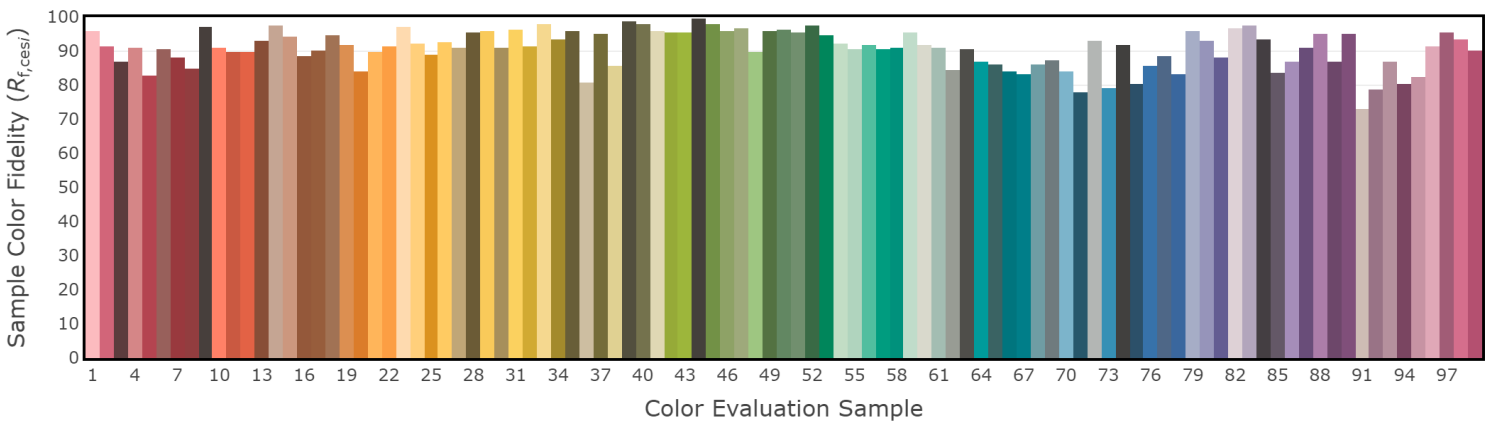
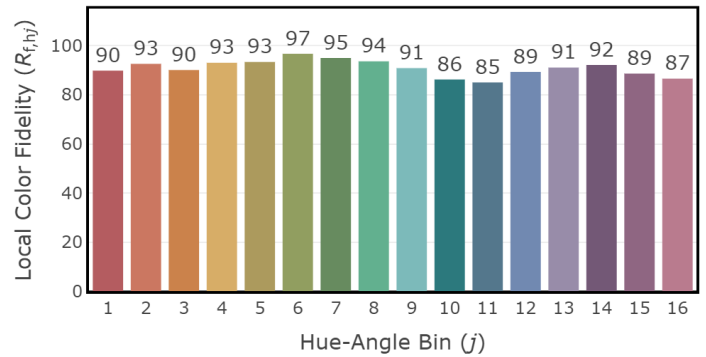
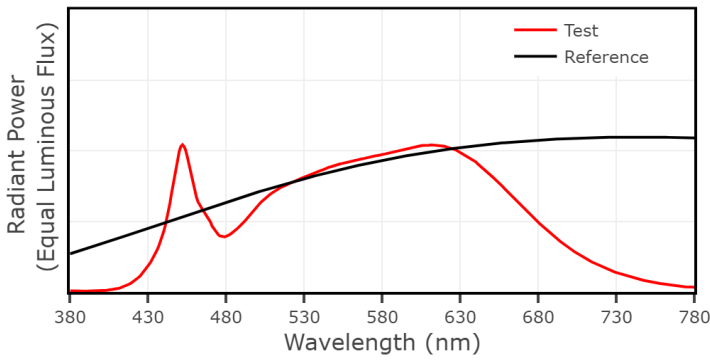
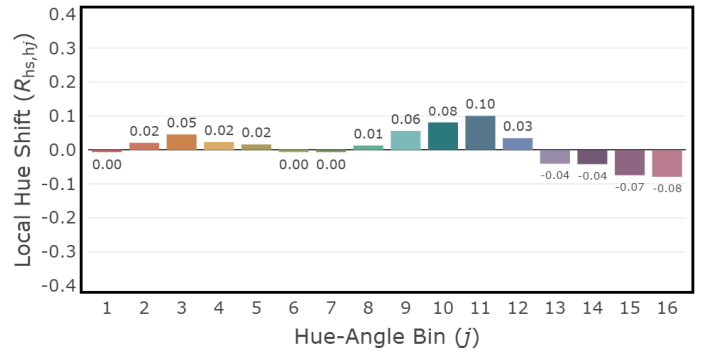
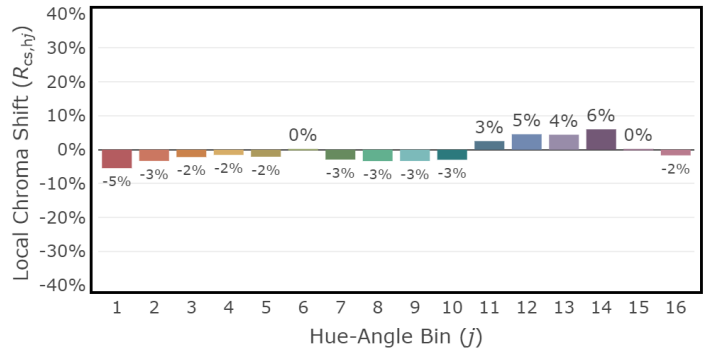
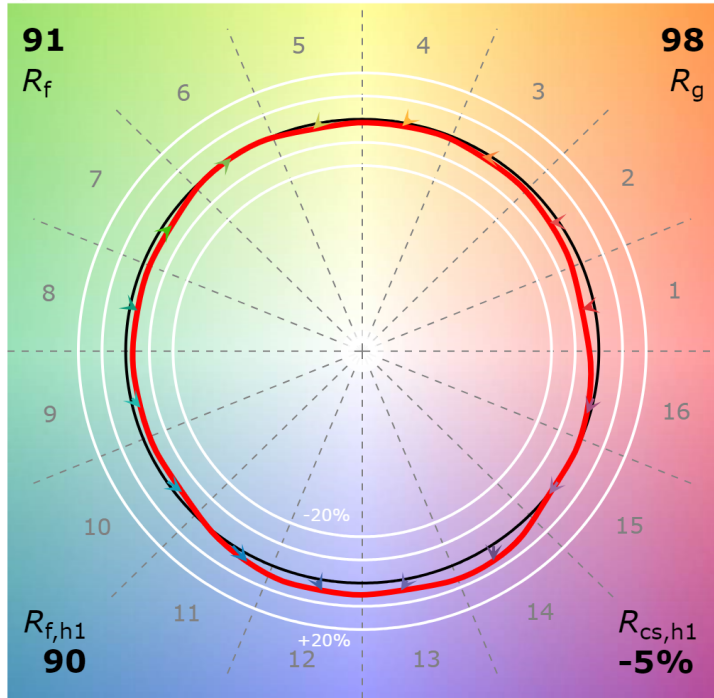
P2 V- F2



4" Adjustable Cylinder 4000K, 750-1000 lm

CCT: 3900 K
 D_{uv} : 0.0019

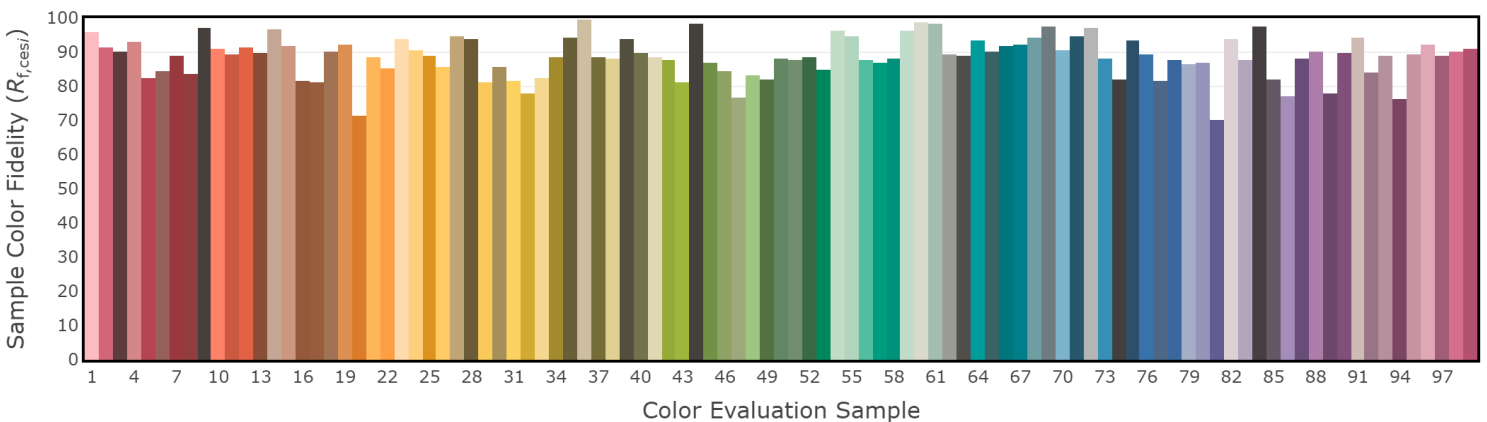
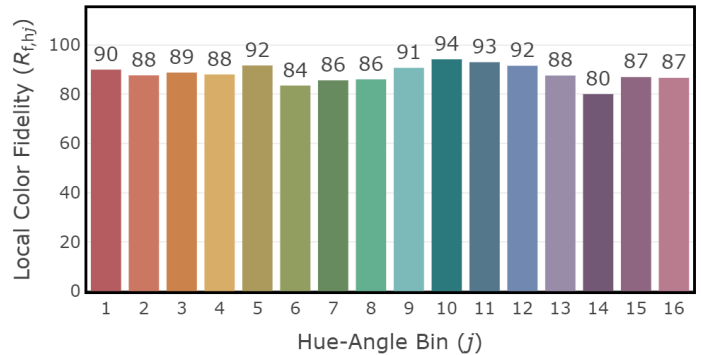
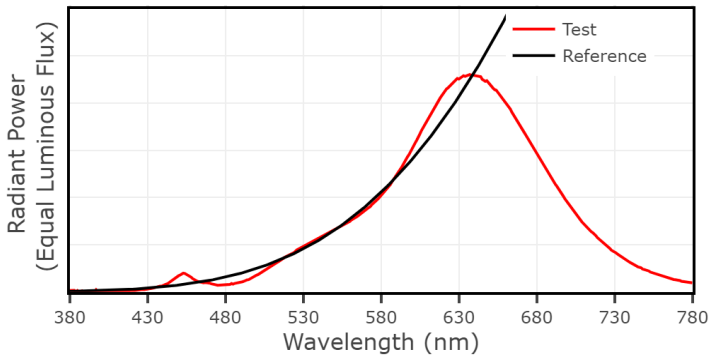
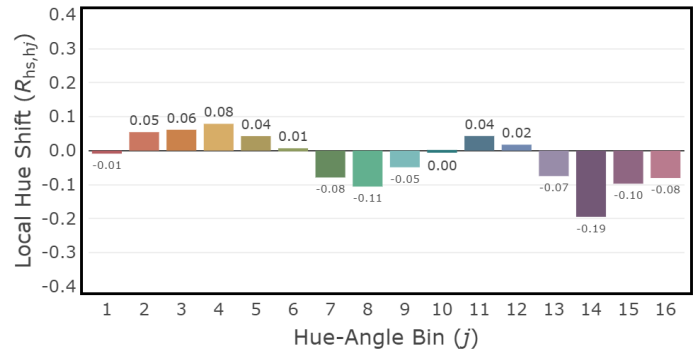
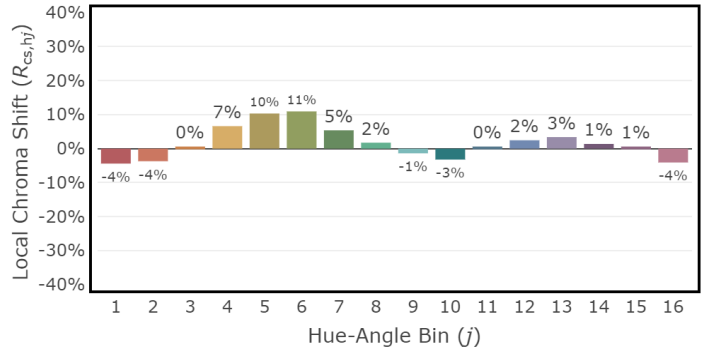
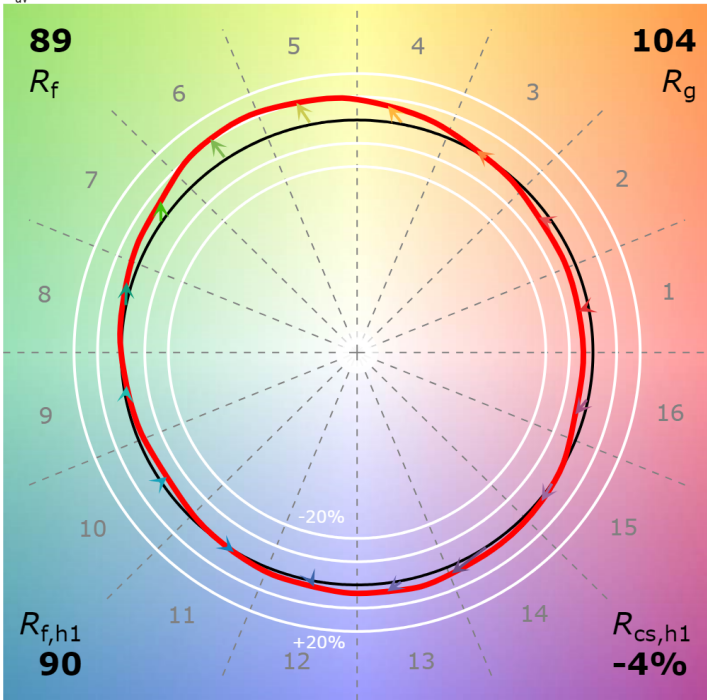
P2 V- F2



4" Adjustable Cylinder - Warm Dim 1800K, 45 lm

CCT: 1812 K
 D_{uv} : -0.0005

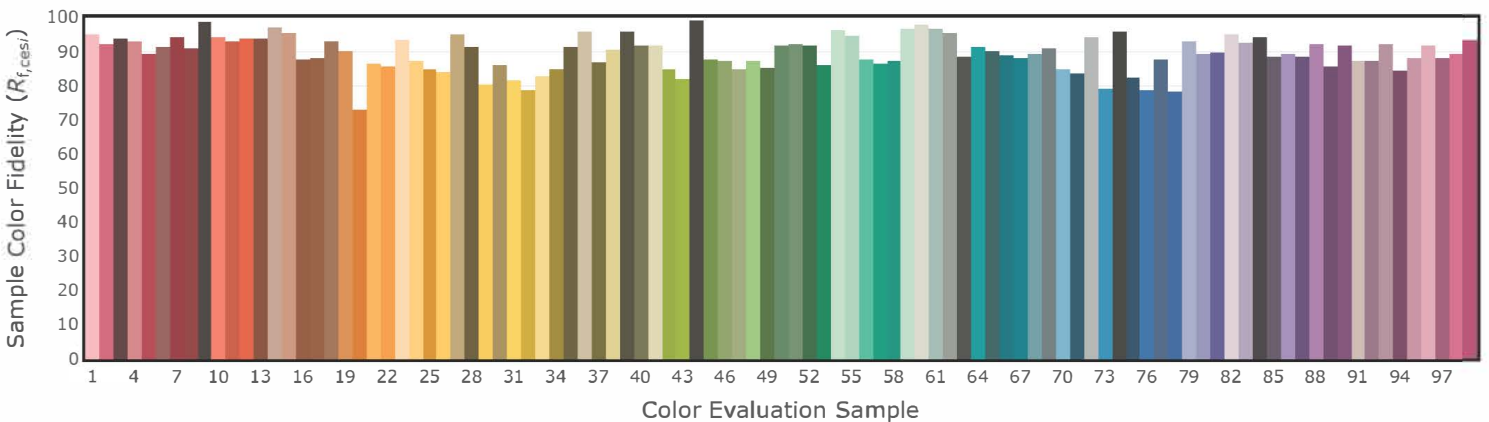
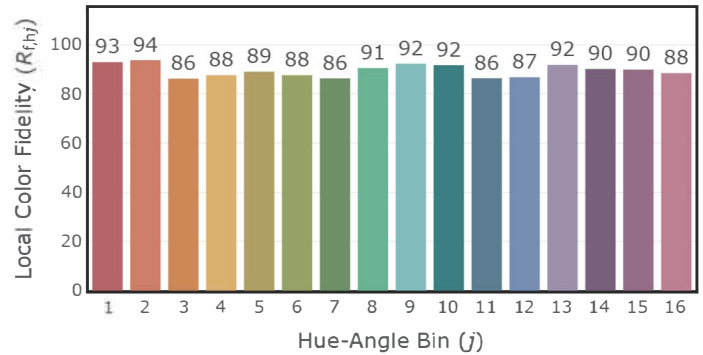
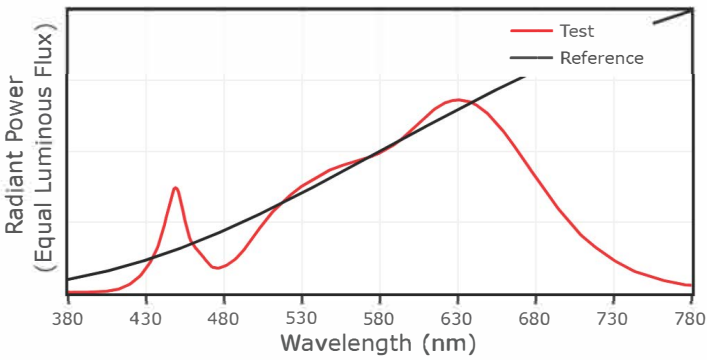
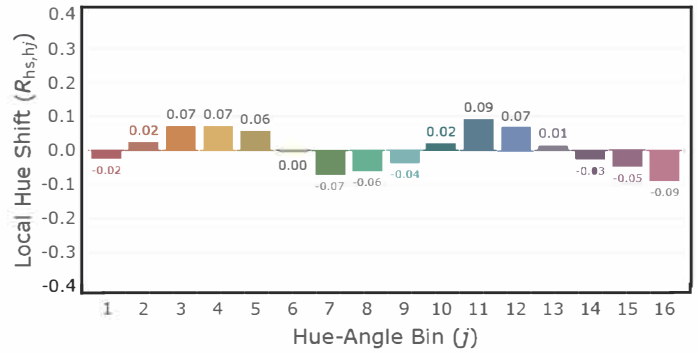
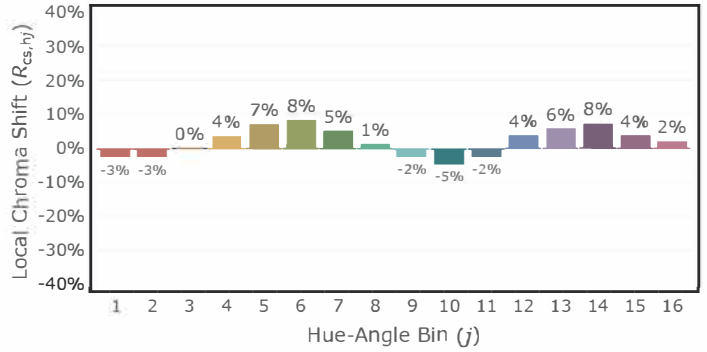
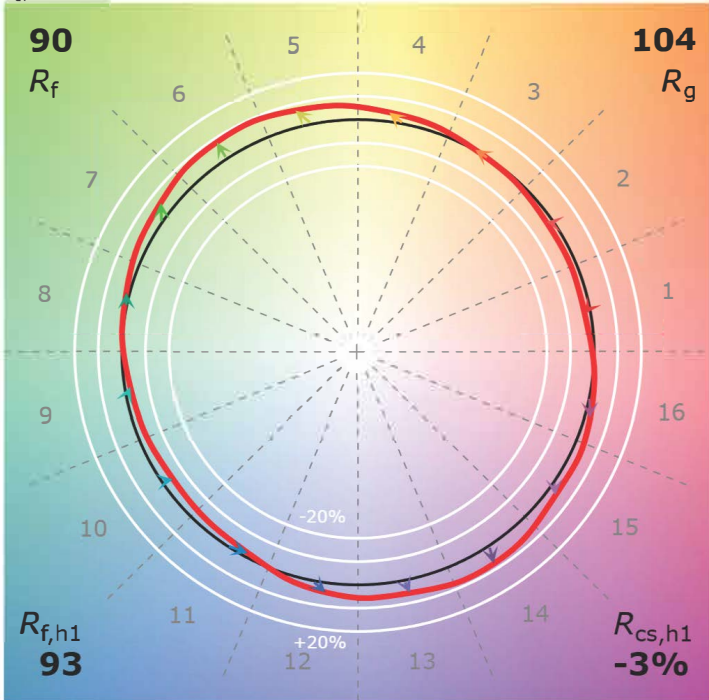
P2 V- F3



4" Adjustable Cylinder - Warm Dim 3000K, 1000 lm

CCT: 2930 K
 D_{uv} : -0.0011

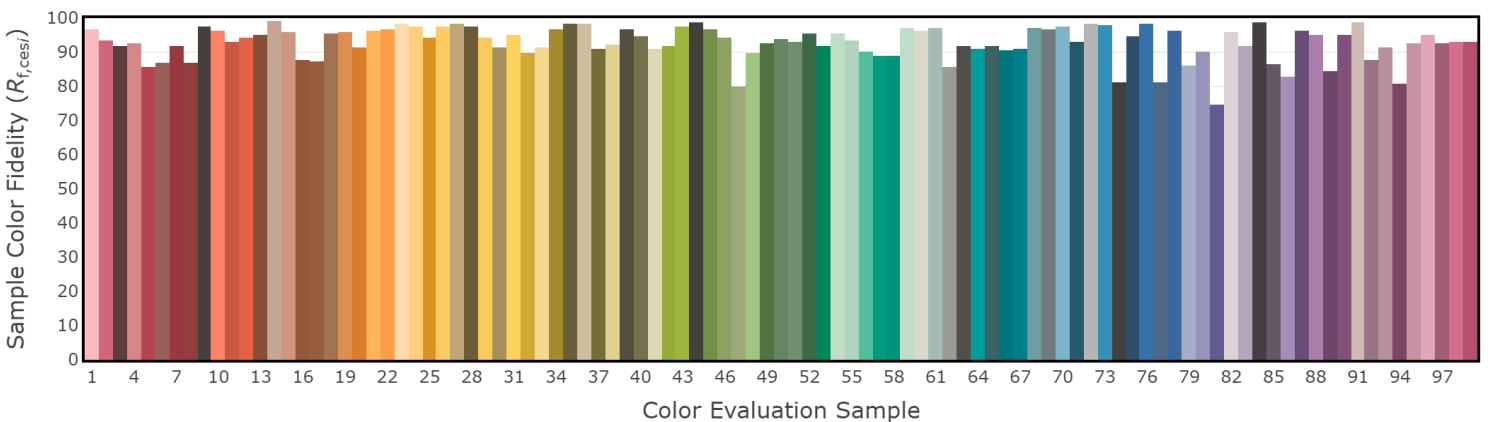
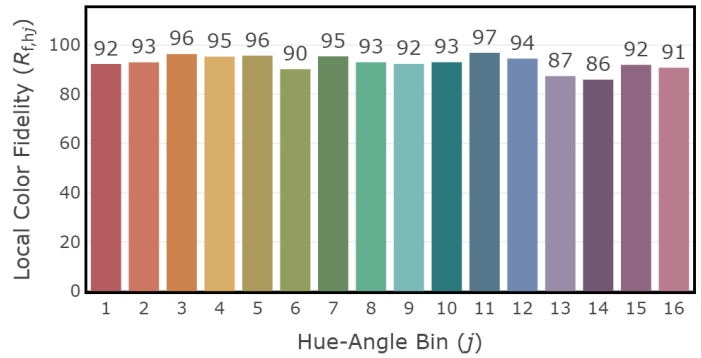
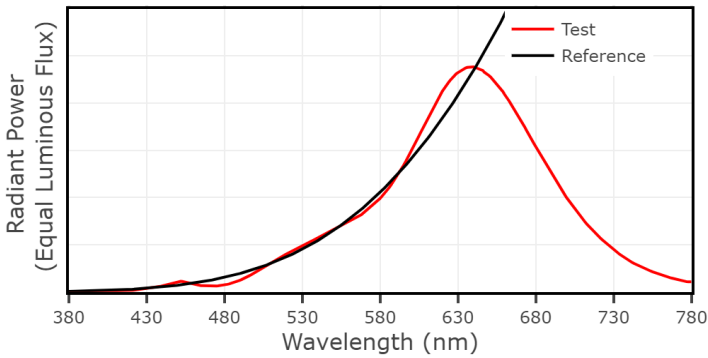
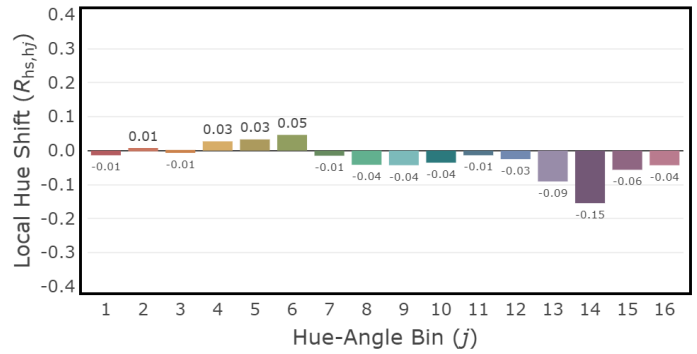
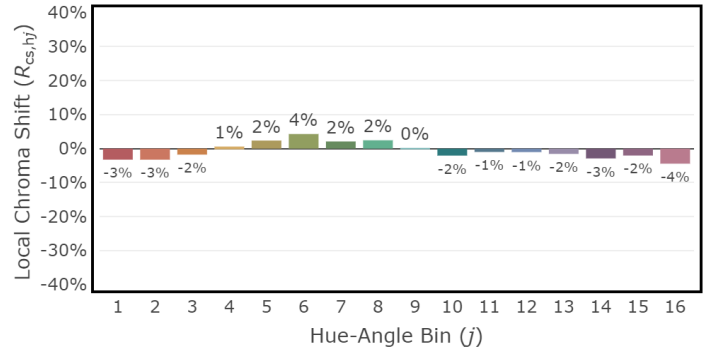
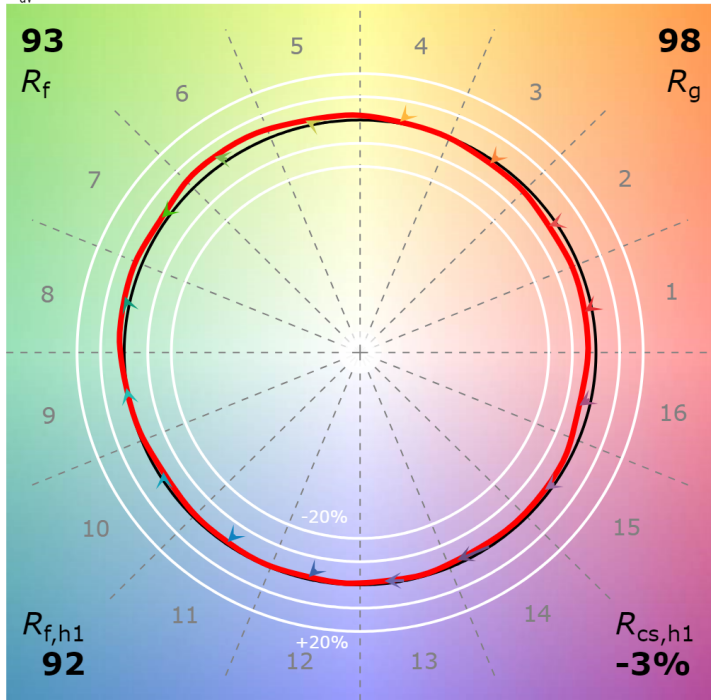
P2 V- F2



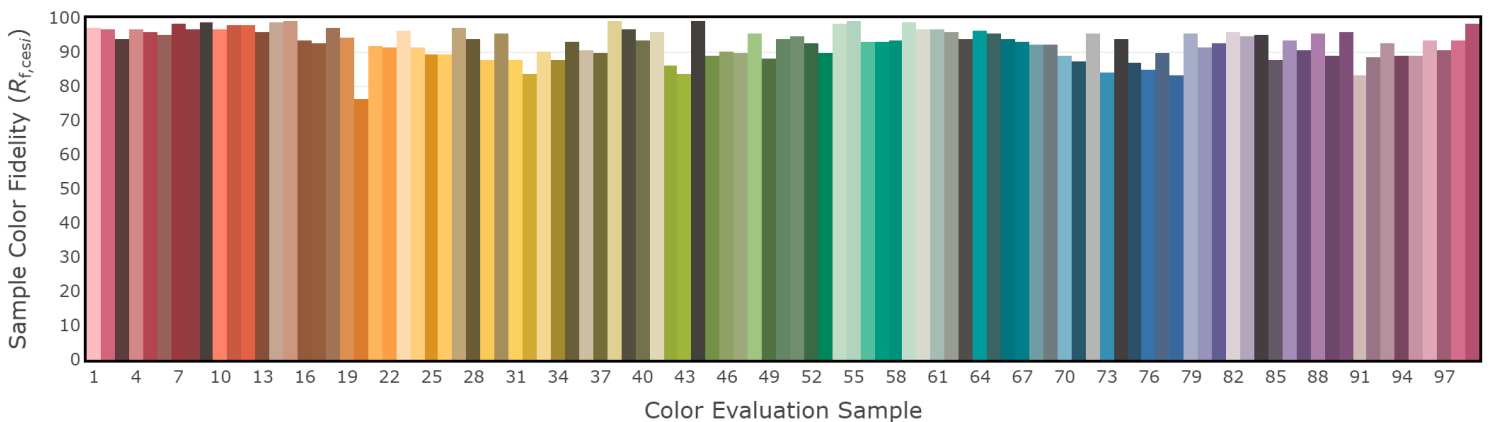
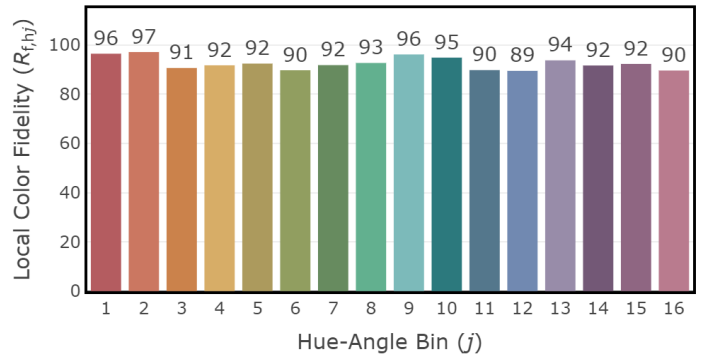
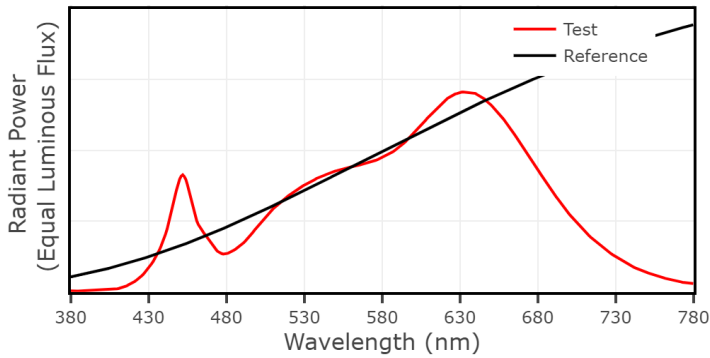
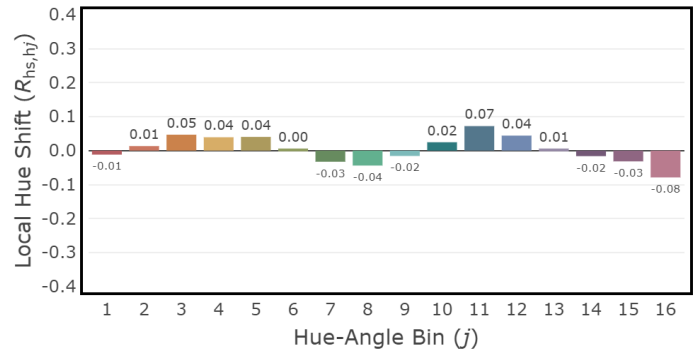
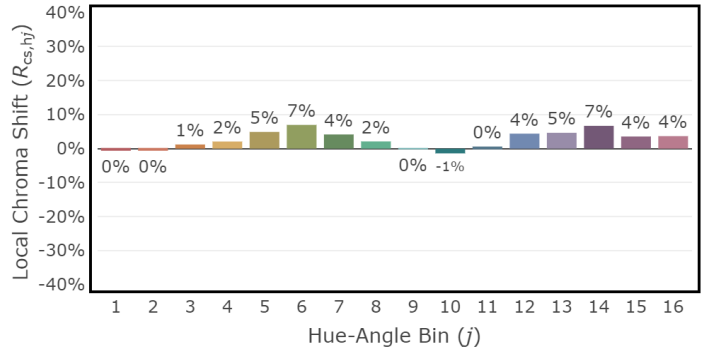
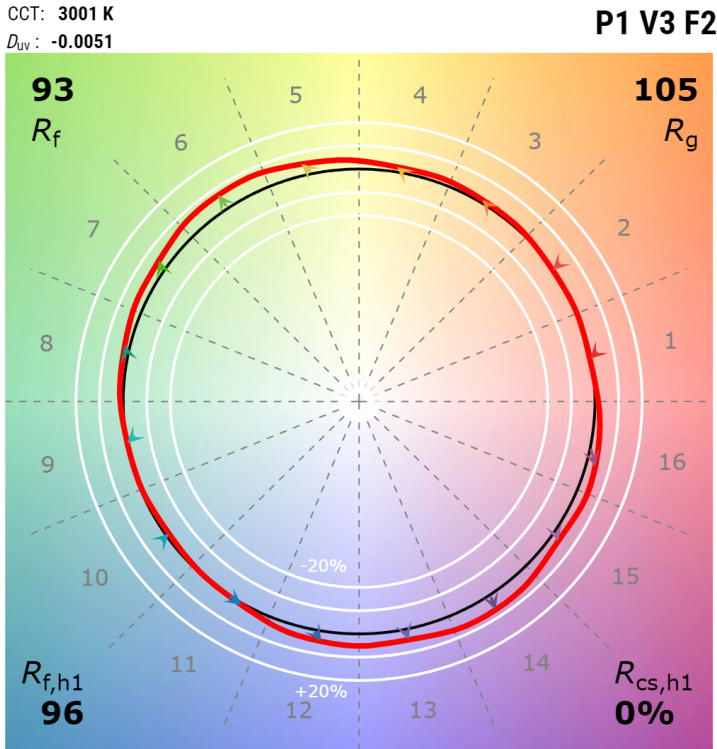
4" Adjustable Cylinder - T1 Tunable White 1800K, 1000 lm

CCT: 1801 K
 D_{uv} : 0.0009

P2 V- F2



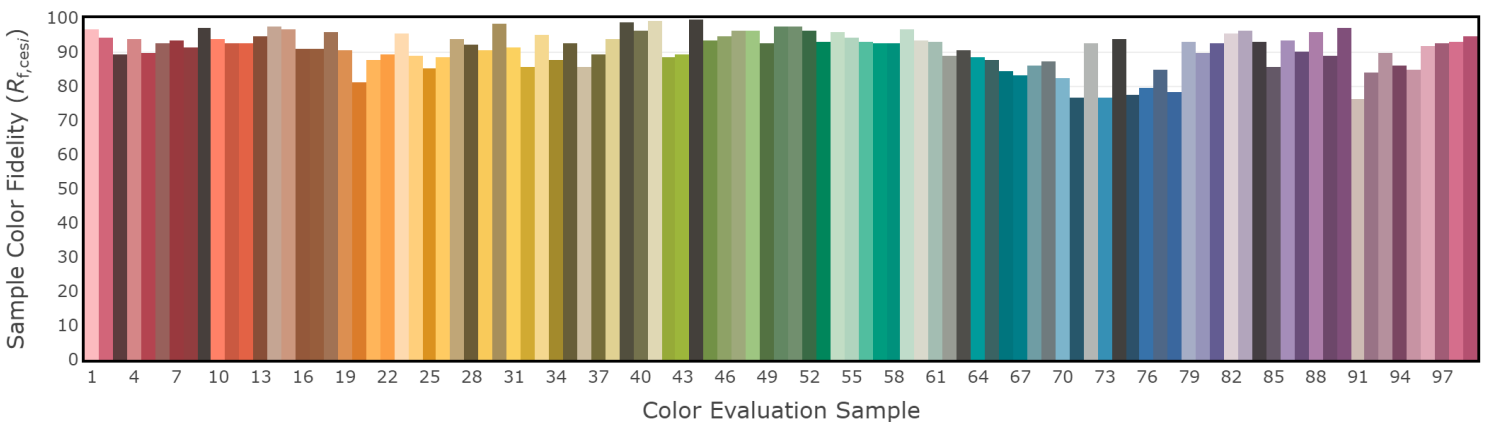
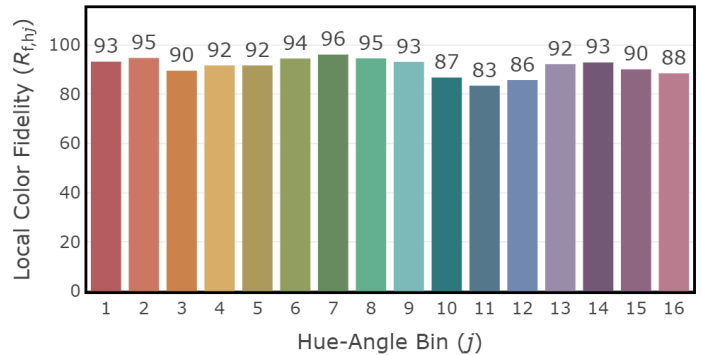
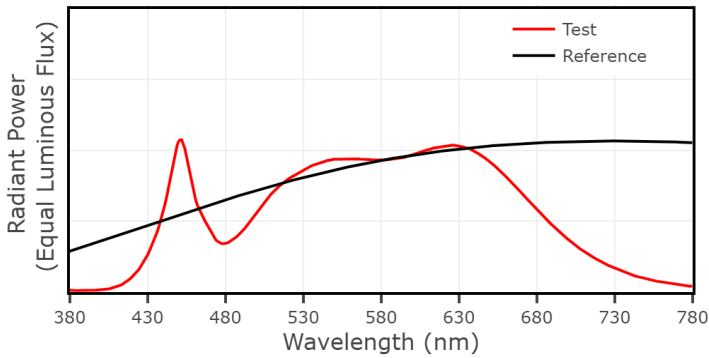
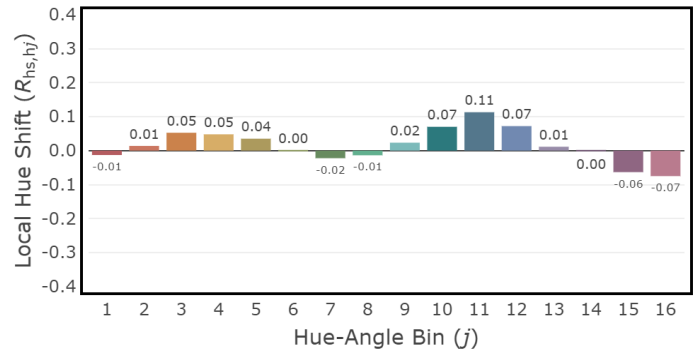
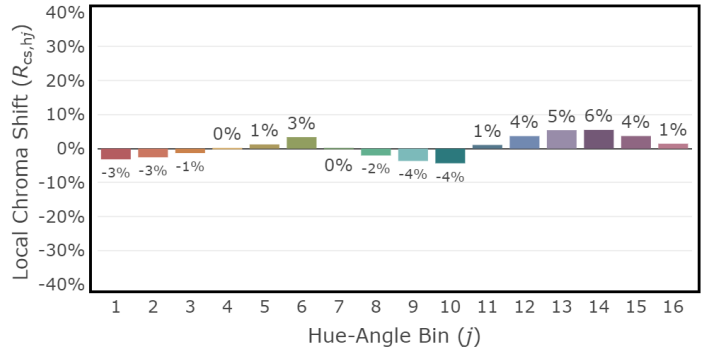
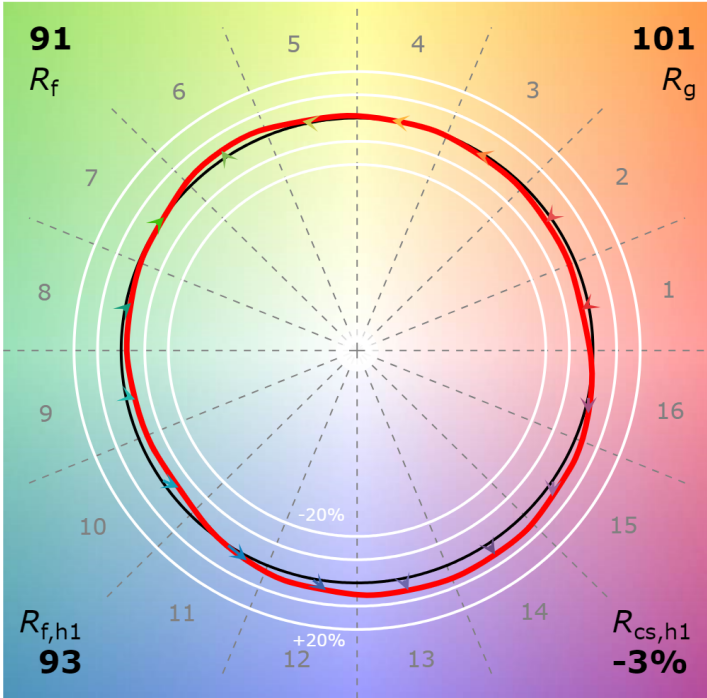
4" Adjustable Cylinder - T1 Tunable White 3000K, 1000 lm



4" Adjustable Cylinder - T1 Tunable White 4000K, 1000 lm

CCT: 3974 K
 D_{uv} : 0.0009

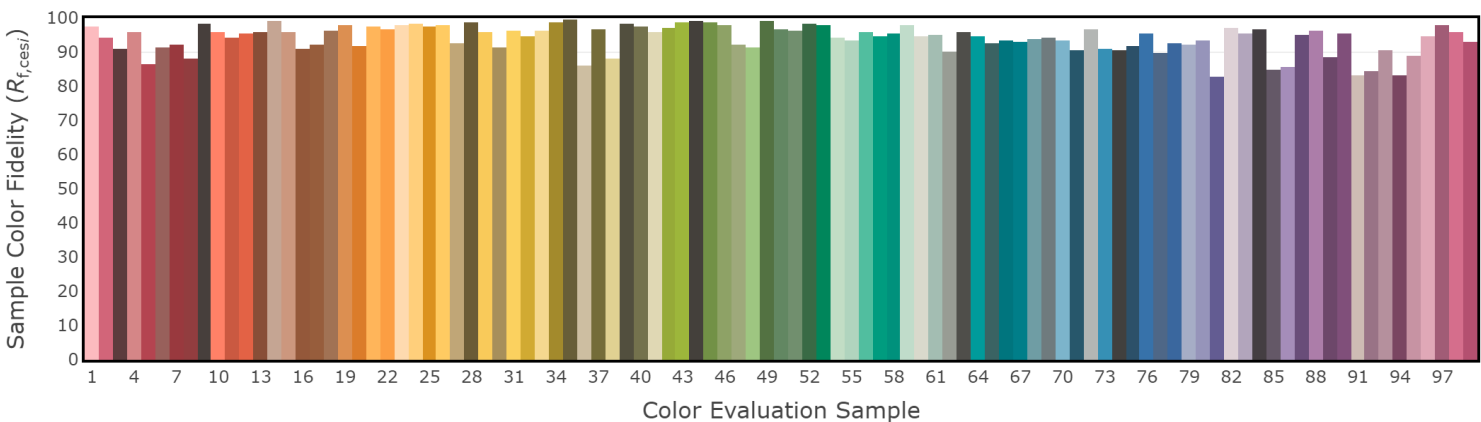
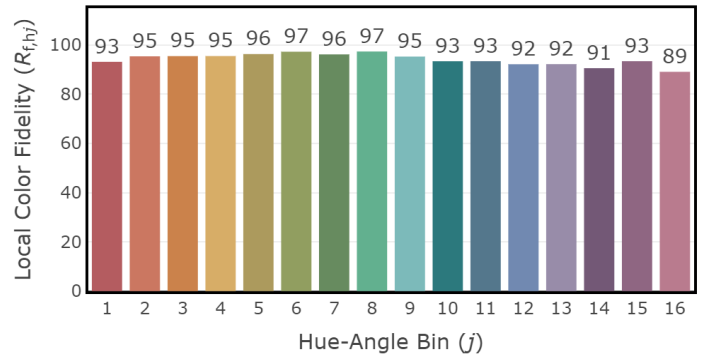
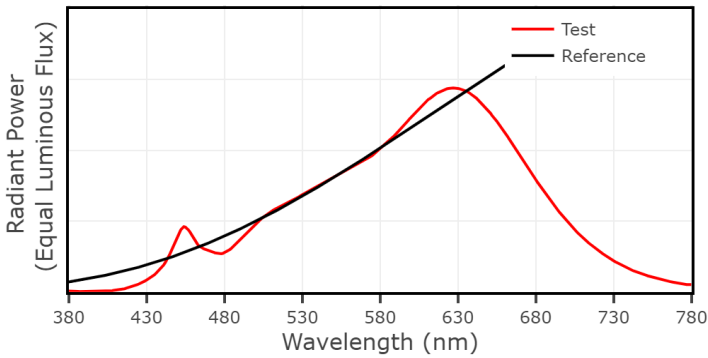
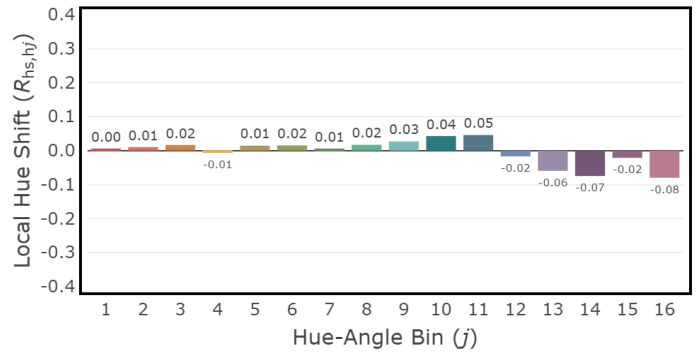
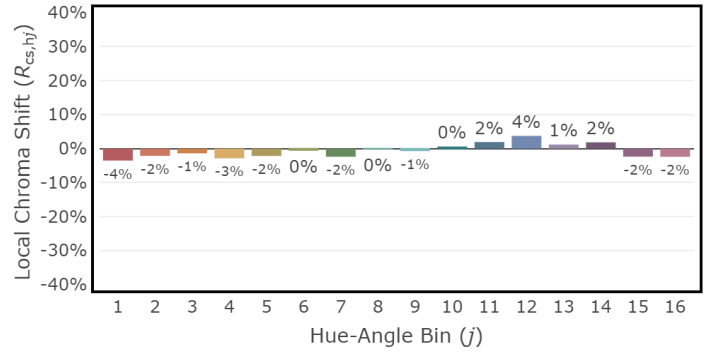
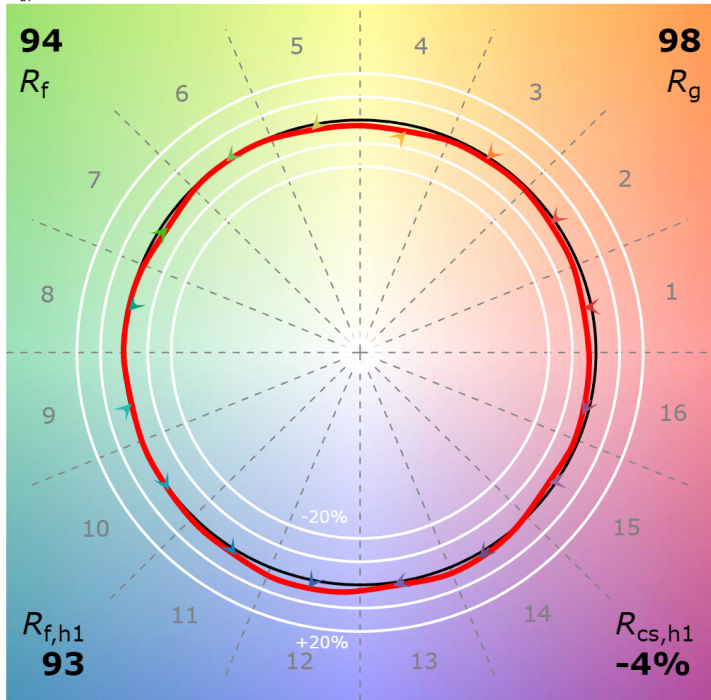
P2 V- F2



4" Adjustable Cylinder - T2 Tunable White 2700K, 1000 lm

CCT: 2730 K
 D_{UV} : 0.0013

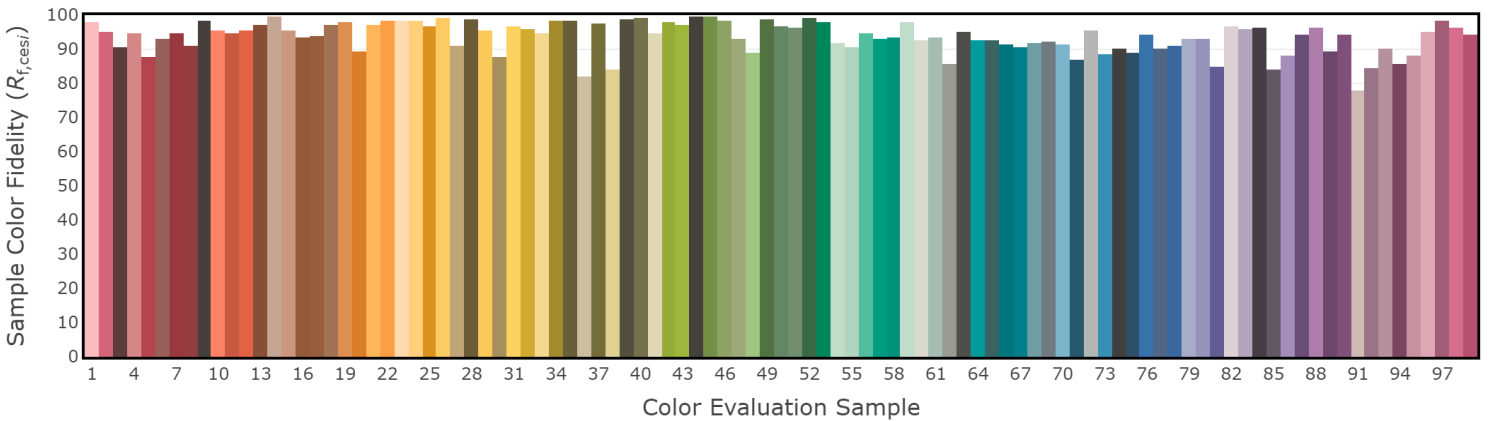
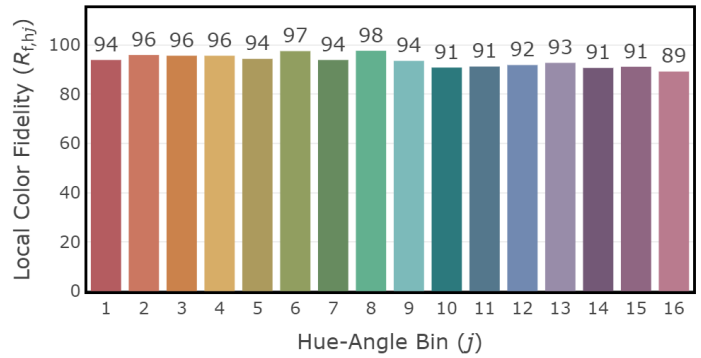
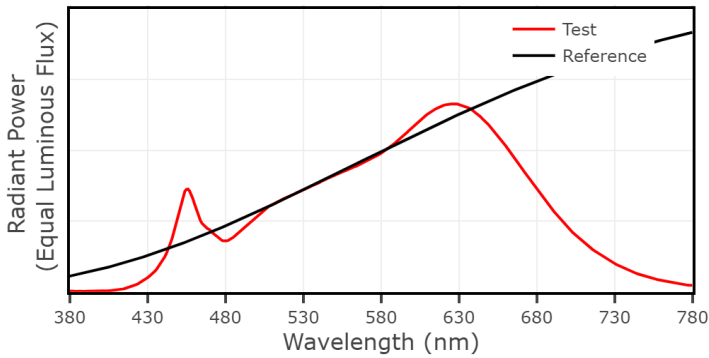
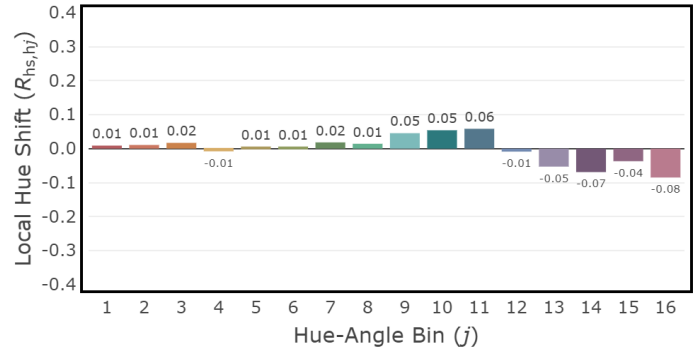
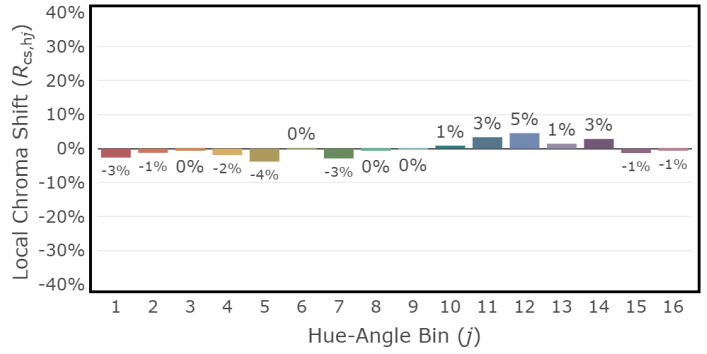
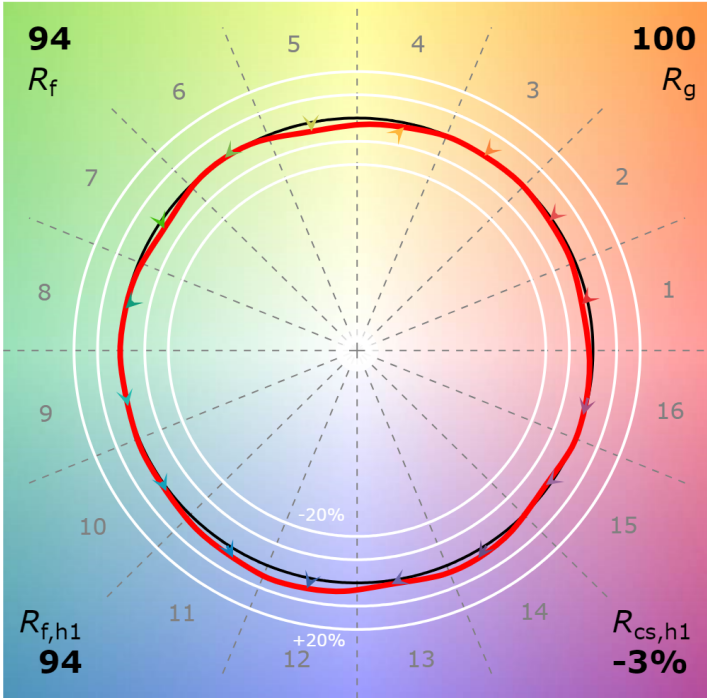
P2 V- F2



4" Adjustable Cylinder - T2 Tunable White 3000K, 1000 lm

CCT: 3038 K
 D_{uv} : -0.0016

P2 V- F2



4" Adjustable Cylinder - T2 Tunable White 6500K, 1000 lm

CCT: 6267 K
 D_{uv} : 0.0026

P2 V- F2

