



# 3" Downlight

## TM-30 Color Rendition Reports

### 2400K

---

750-1000 lm

### 2700K

---

750-1250 lm

1500 lm

### 3000K

---

750-1250 lm

1500 lm

### 3500K

---

750-1250 lm

1500 lm

### 4000K

---

750-1250 lm

1500 lm

### Warm Dim

---

1800K

3000K

### T1 Tunable White

---

1800K

3000K

4000K

### T2 Tunable White

---

2700K

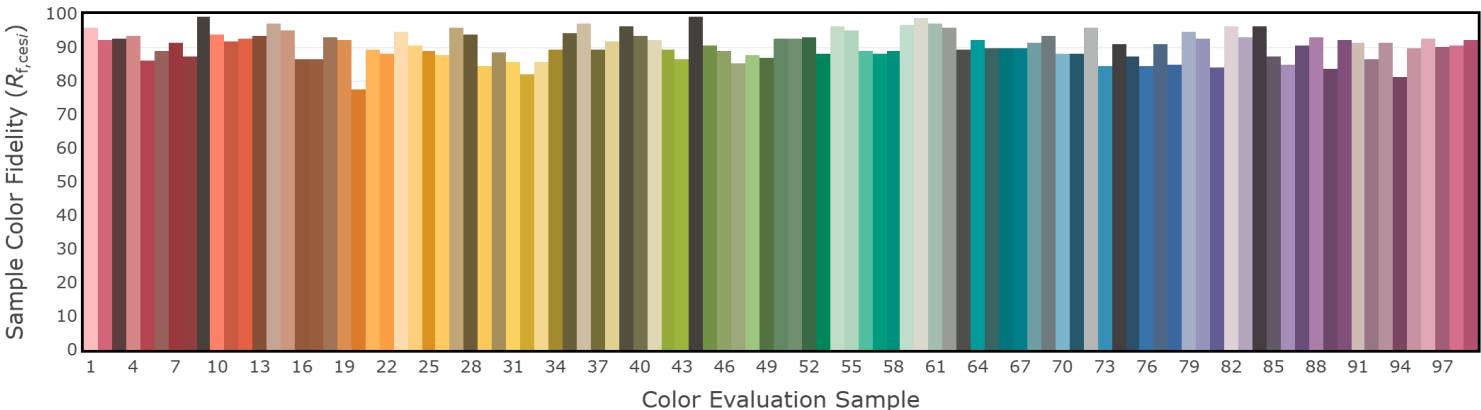
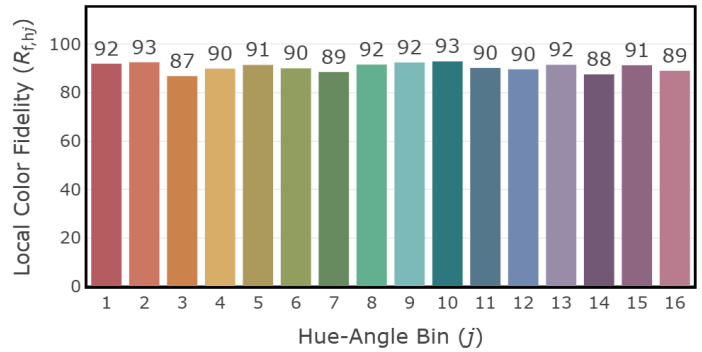
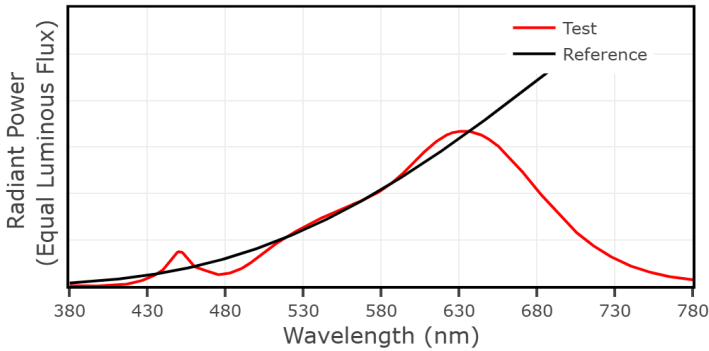
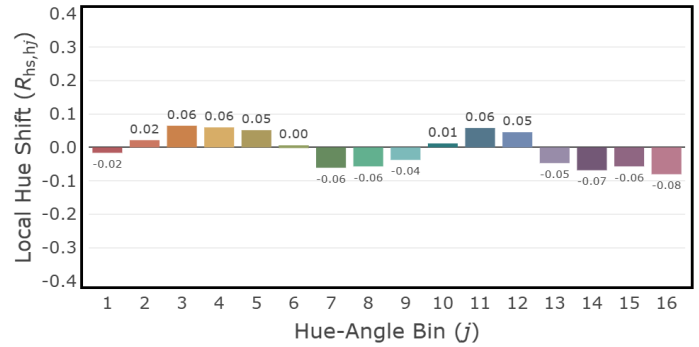
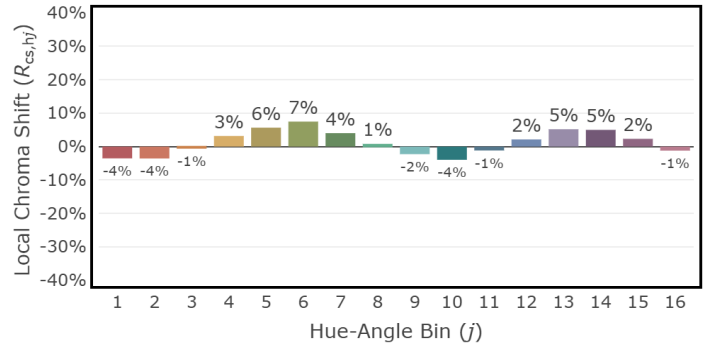
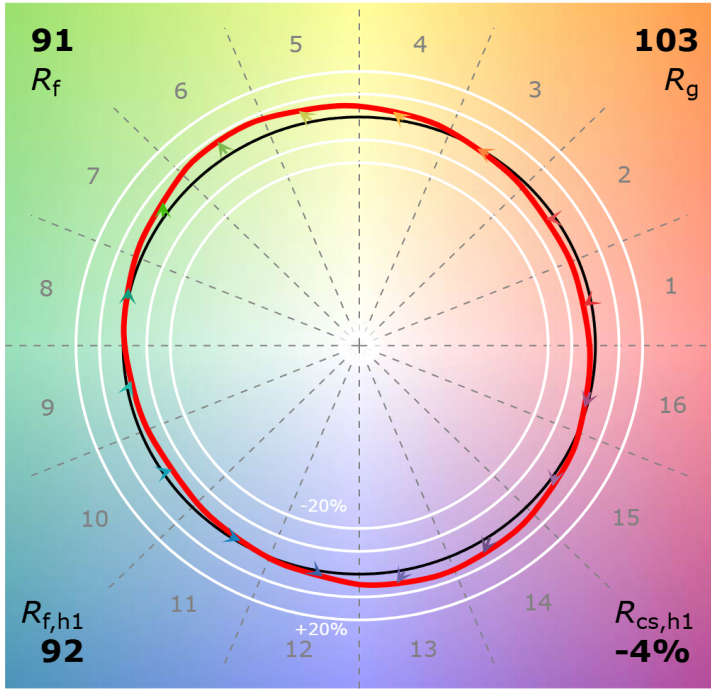
3000K

6500K

3" Downlight 2400K, 750-1000 lm

CCT: 2351 K  
 $D_{uv}$ : 0.0006

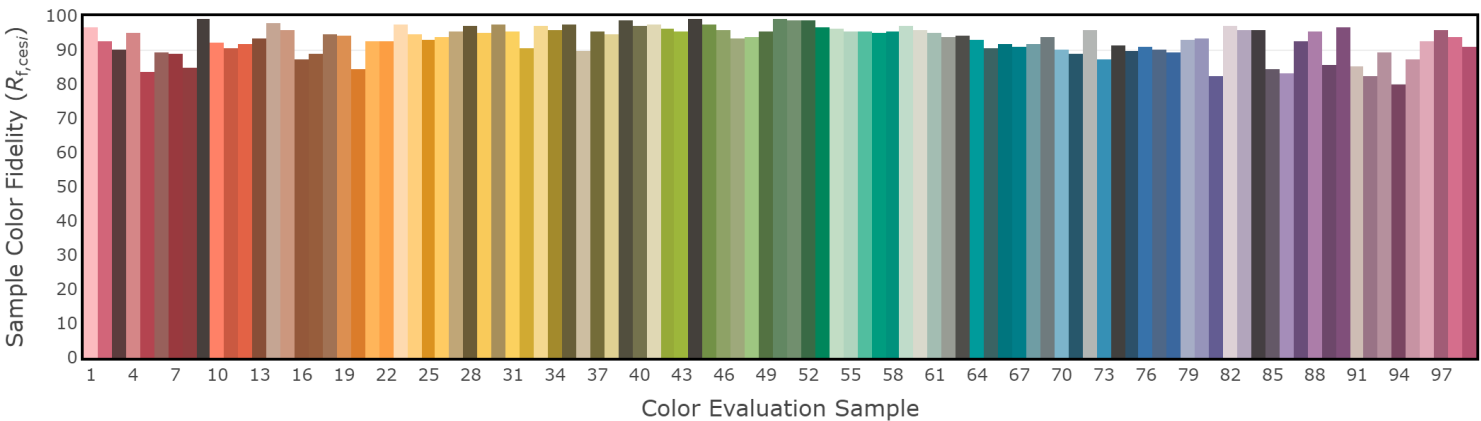
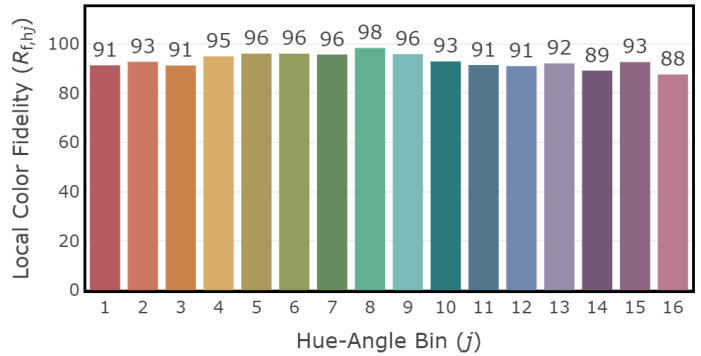
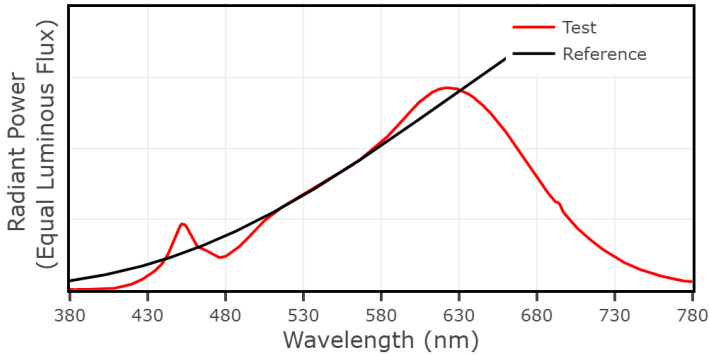
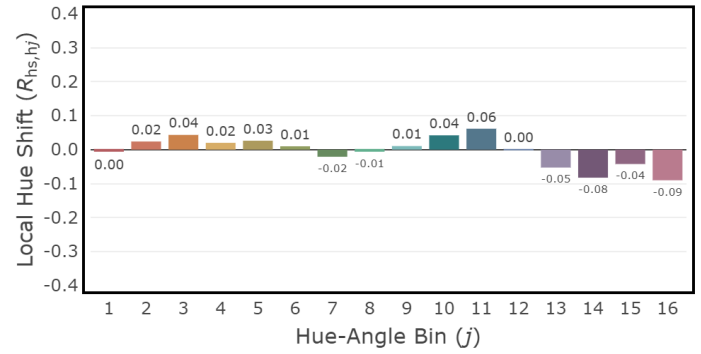
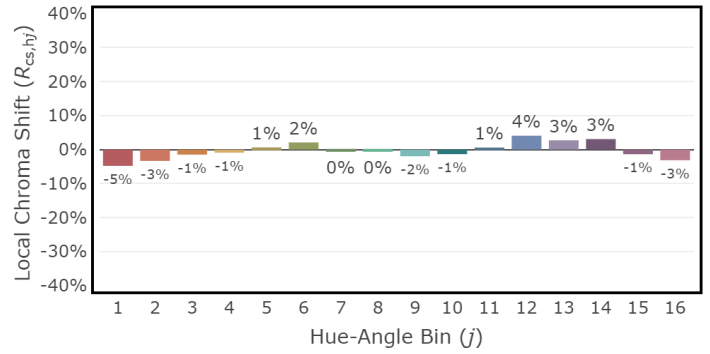
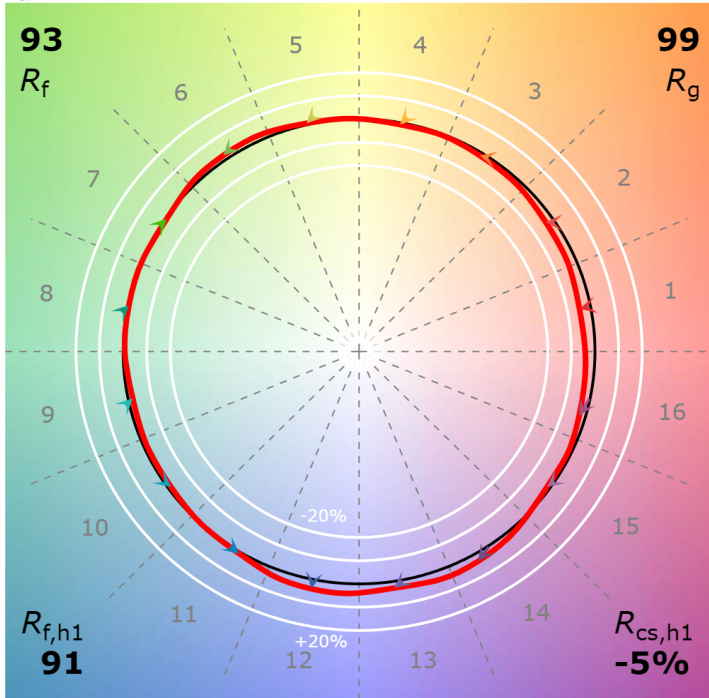
P2 V- F2



3" Downlight 2700K, 750-1250 lm

CCT: 2678 K  
 $D_{uv}$ : 0.0009

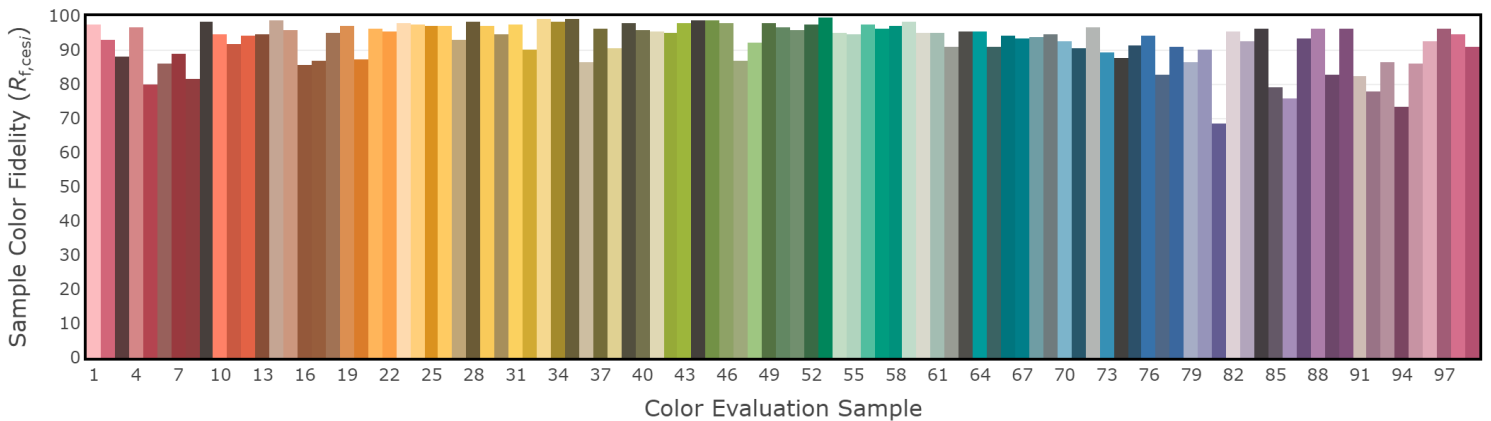
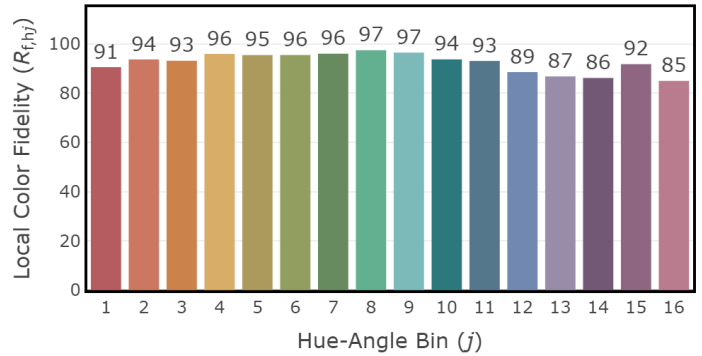
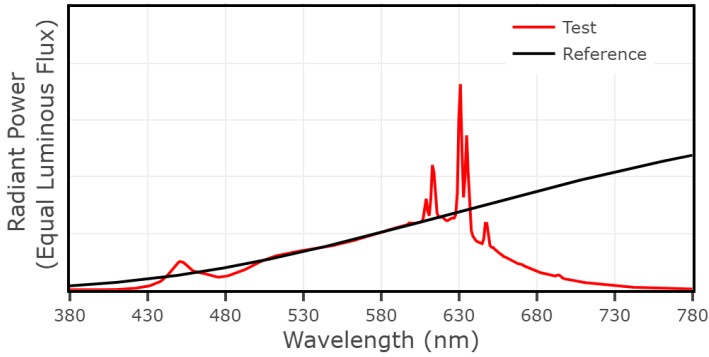
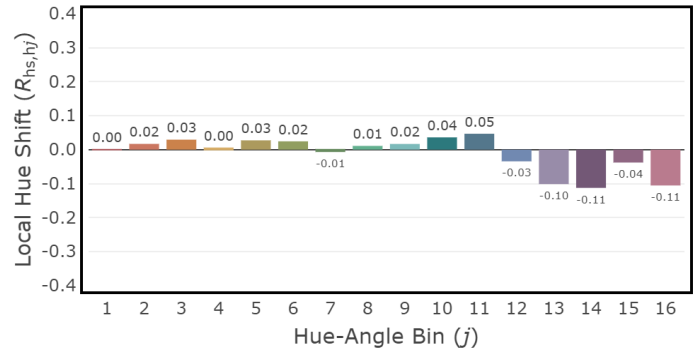
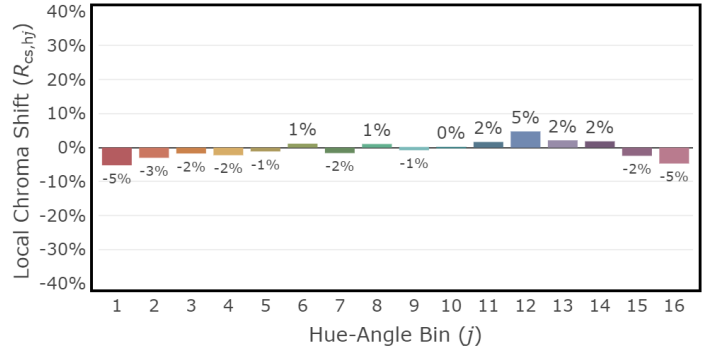
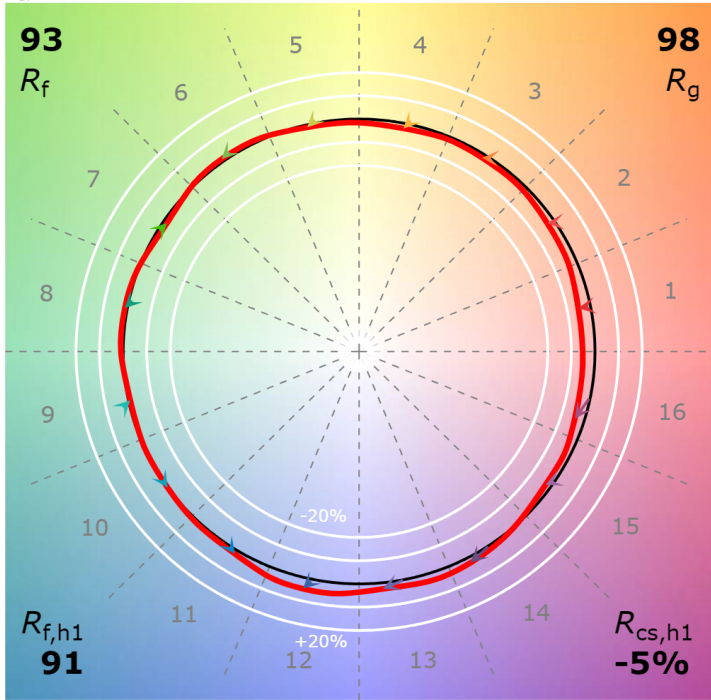
P2 V- F2



3" Downlight 2700K, 1500 lm

CCT: 2728 K  
 $D_{uv}$ : 0.0017

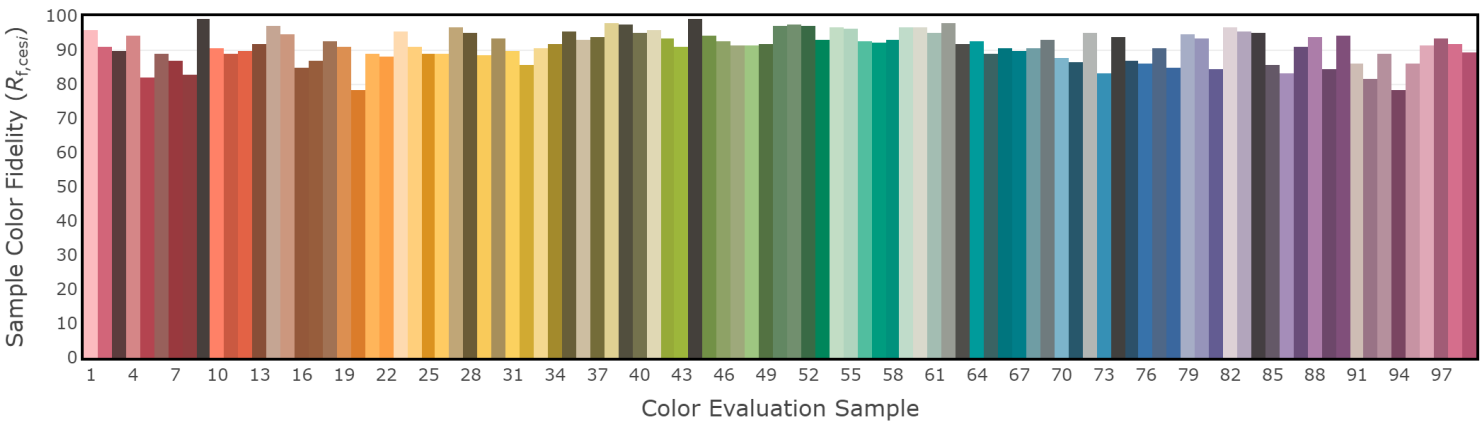
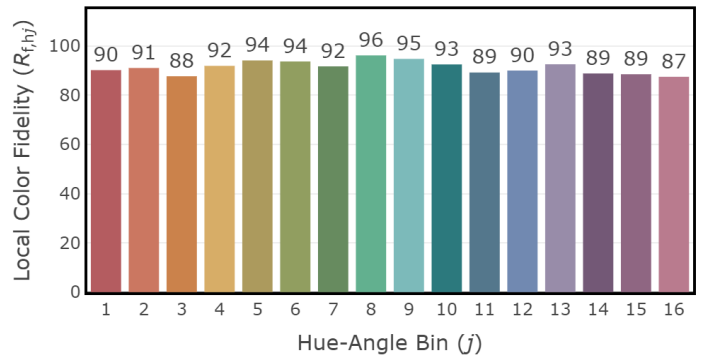
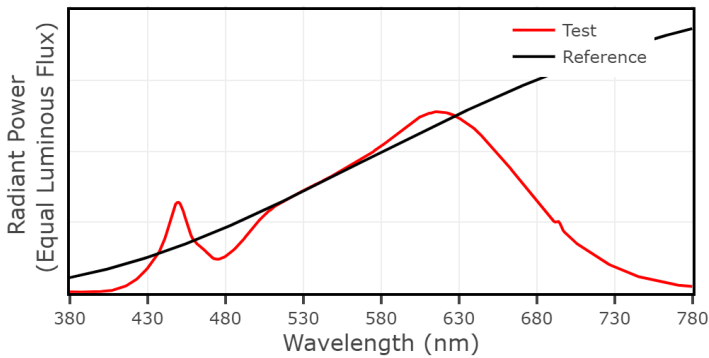
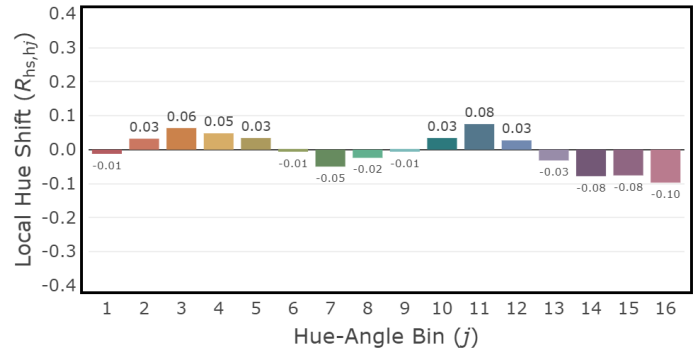
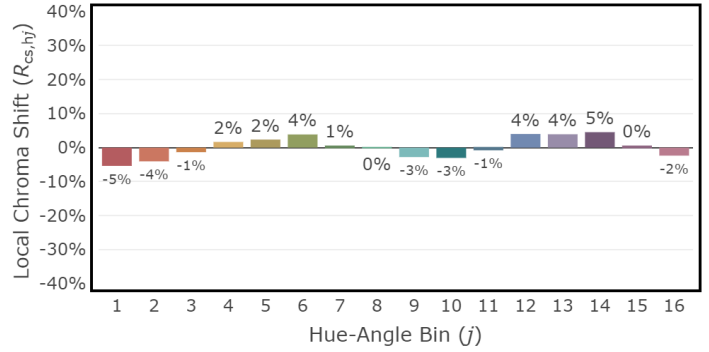
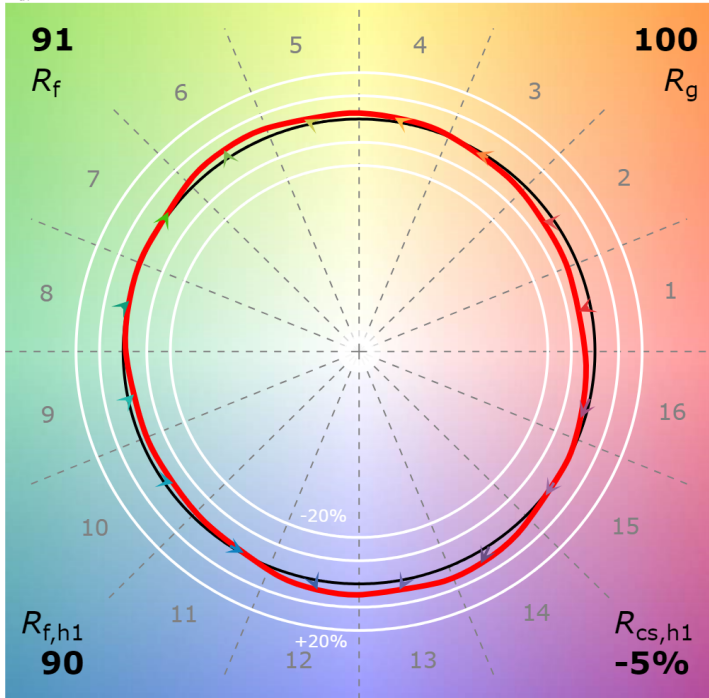
P2 V- F2



3" Downlight 3000K, 750-1250 lm

CCT: 3014 K  
 $D_{uv}$ : 0.0005

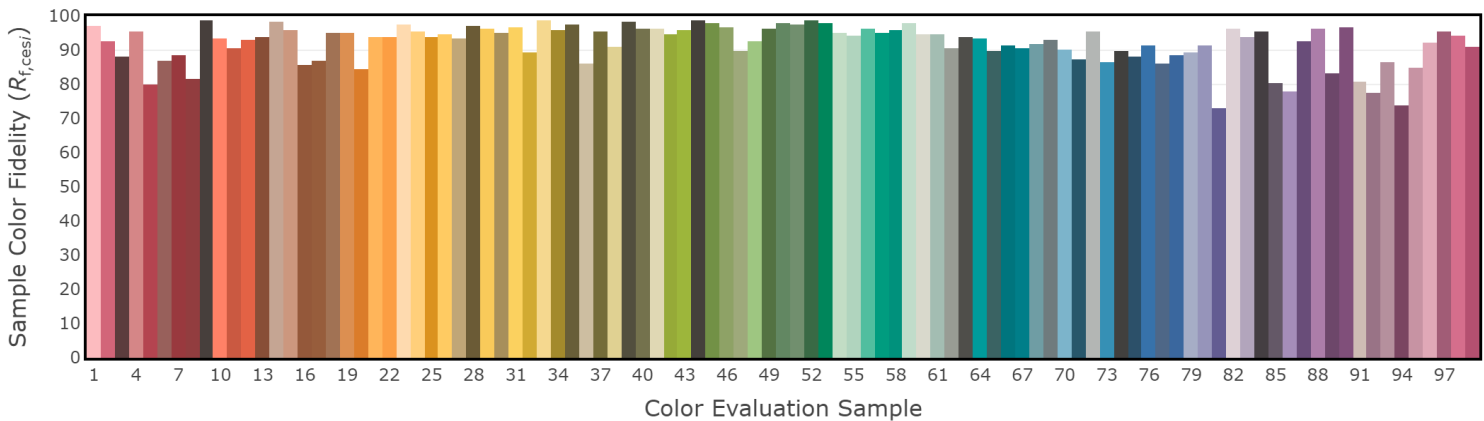
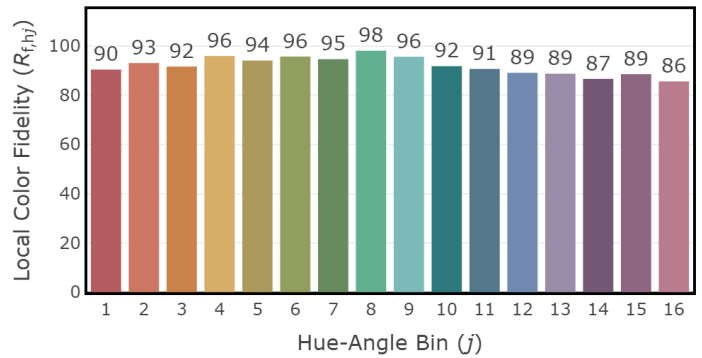
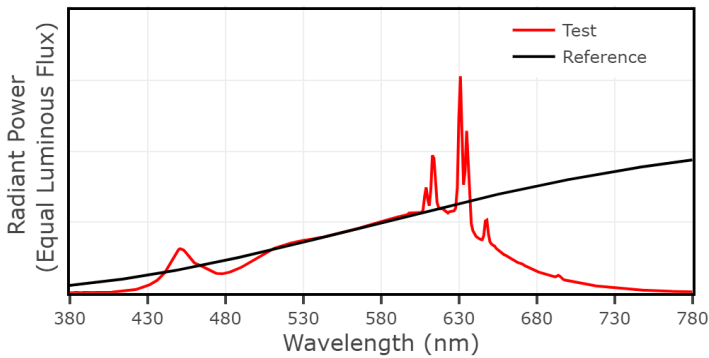
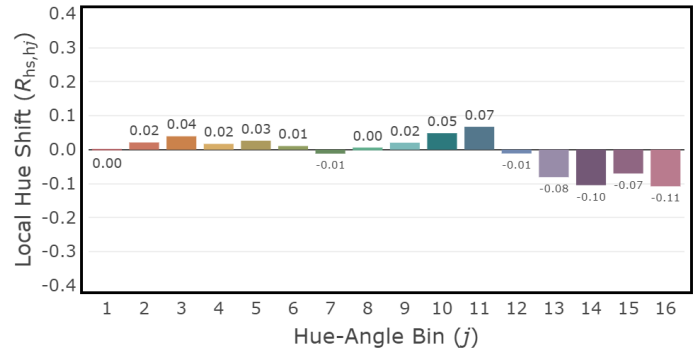
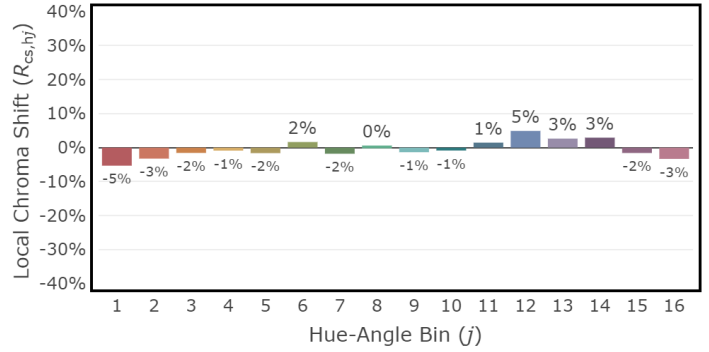
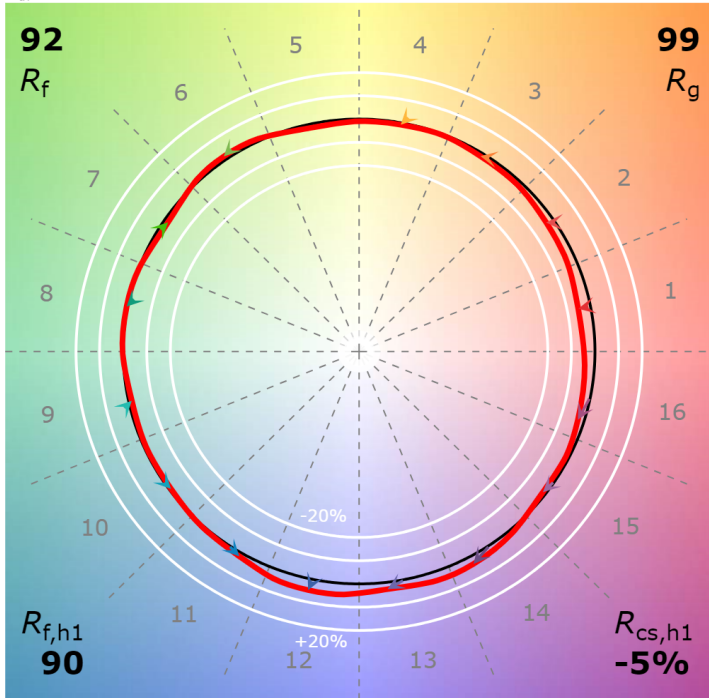
P2 V- F2



3" Downlight 3000K, 1500 lm

CCT: 3005 K  
 $D_{uv}$ : 0.0013

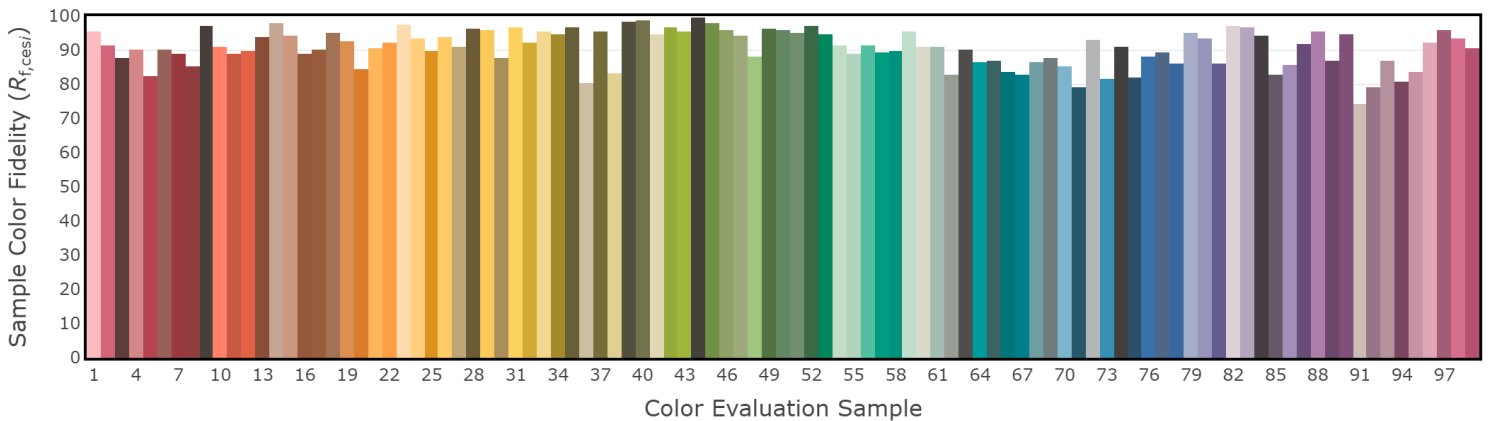
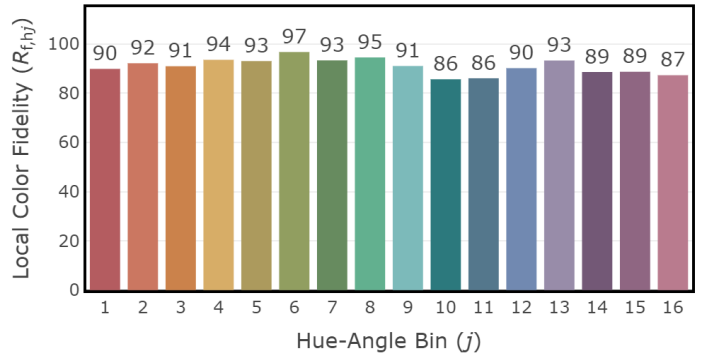
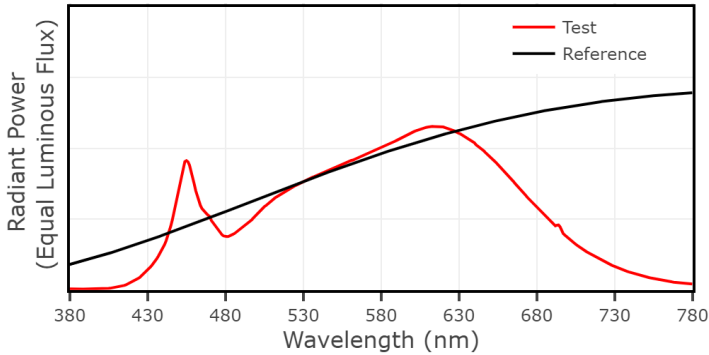
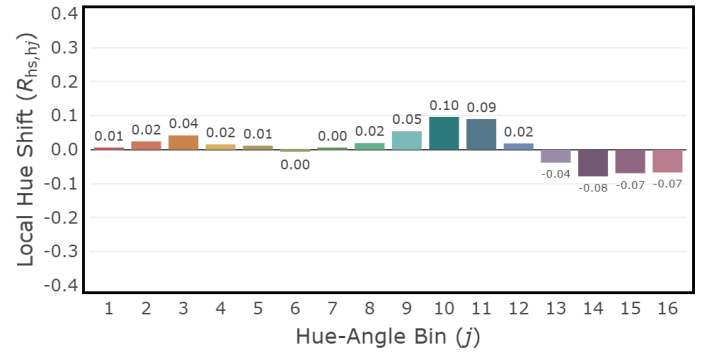
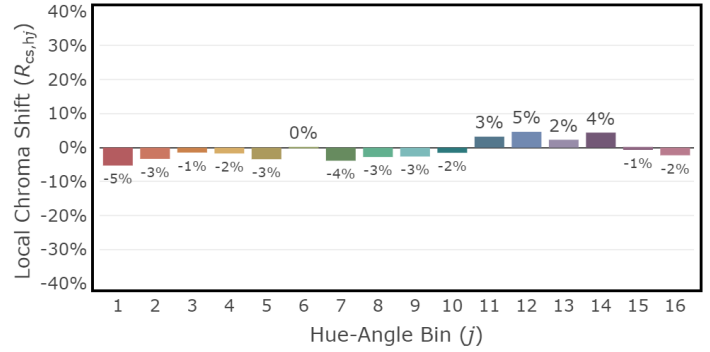
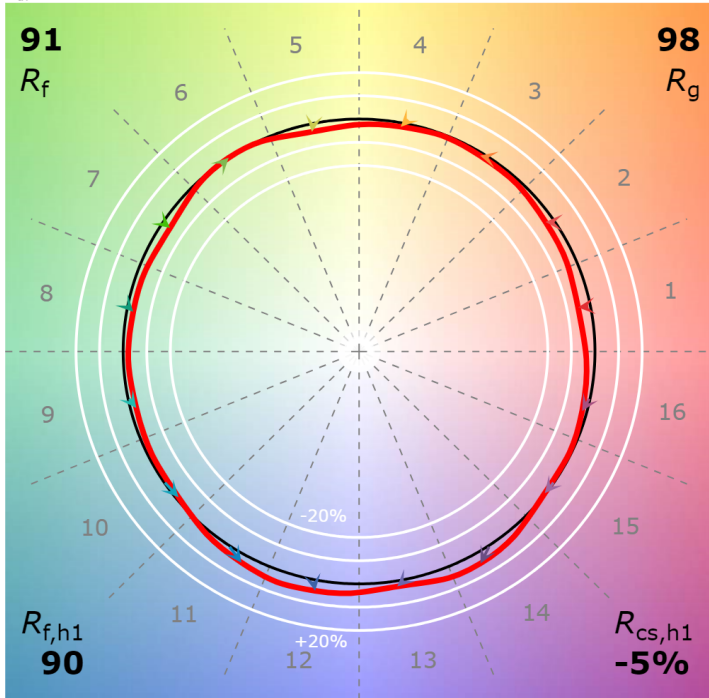
P2 V- F2



3" Downlight 3500K, 750-1250 lm

CCT: 3445 K  
 $D_{uv}$ : -0.0004

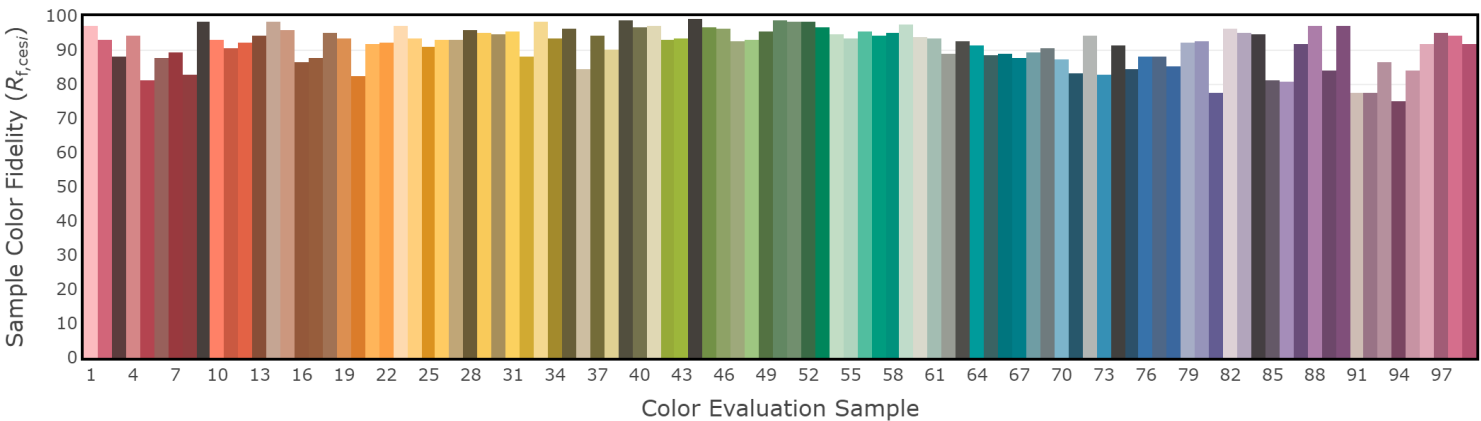
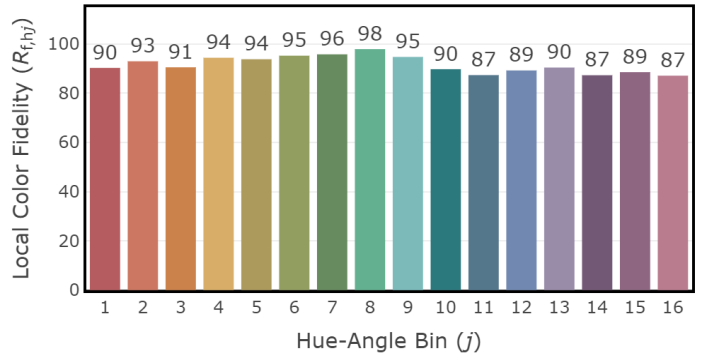
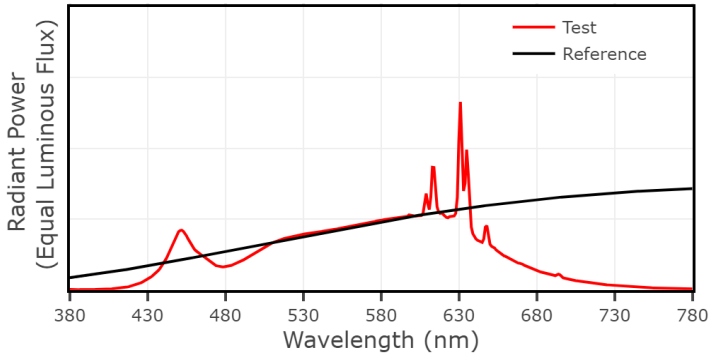
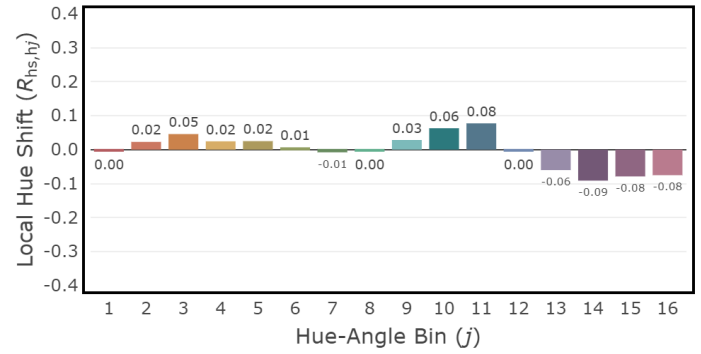
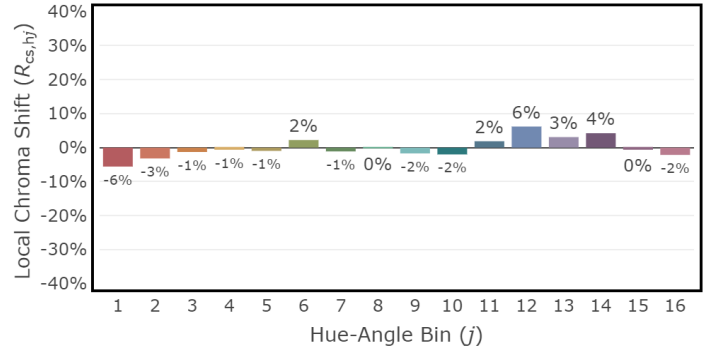
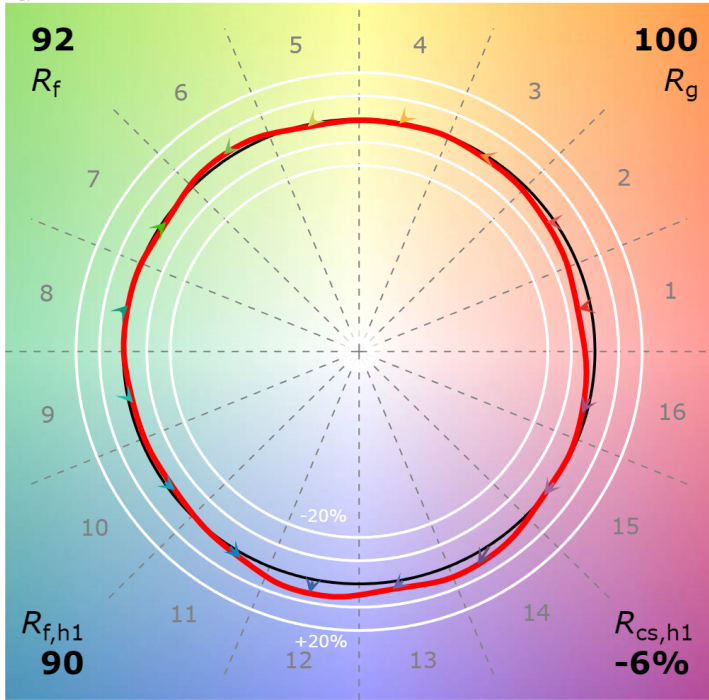
P2 V- F2



3" Downlight 3500K, 1500 lm

CCT: 3400 K  
 $D_{uv}$ : 0.0002

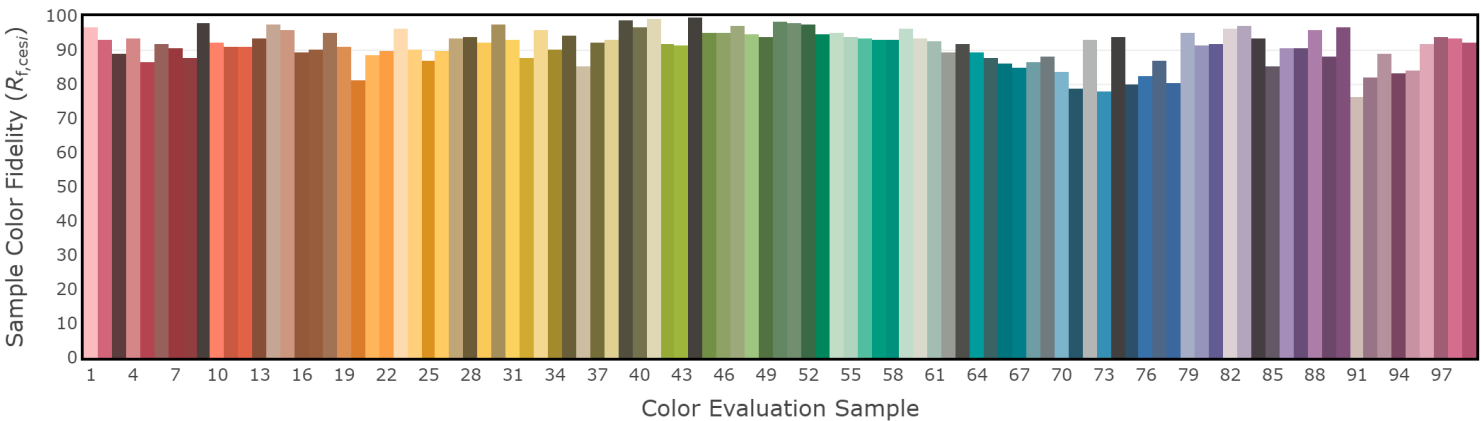
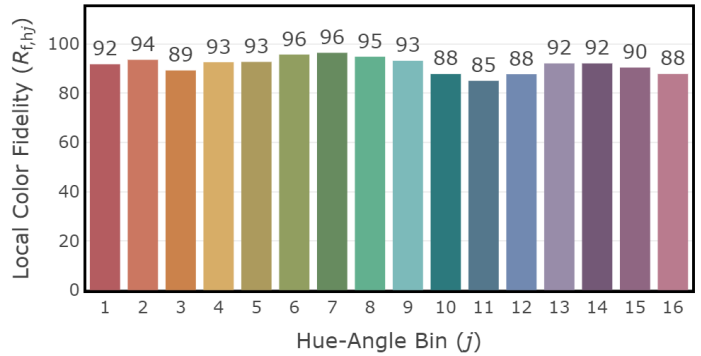
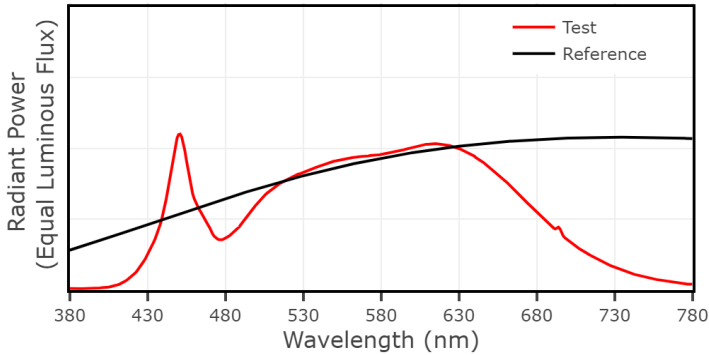
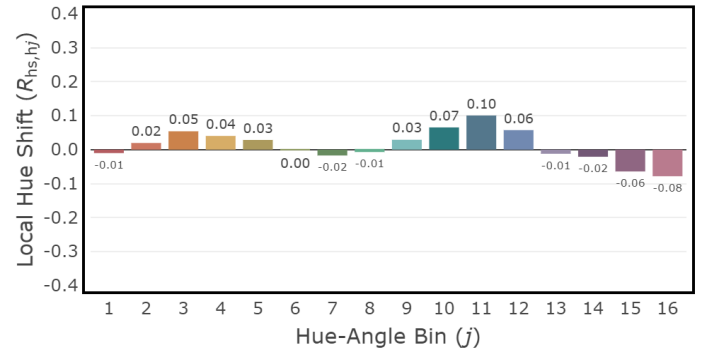
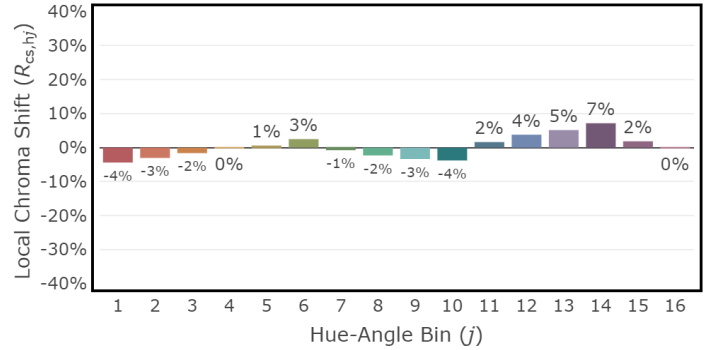
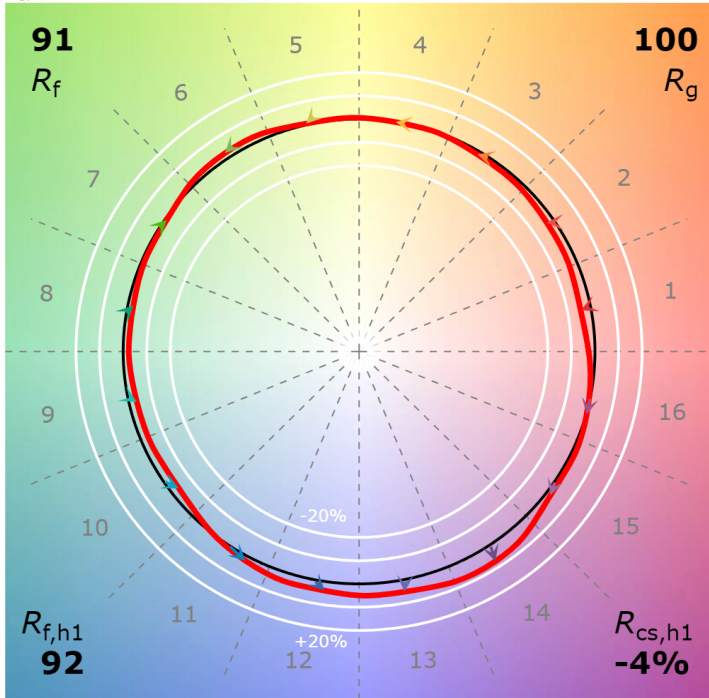
P2 V- F2



3" Downlight 4000K, 750-1250 lm

CCT: 3944 K  
 $D_{uv}$ : 0.0008

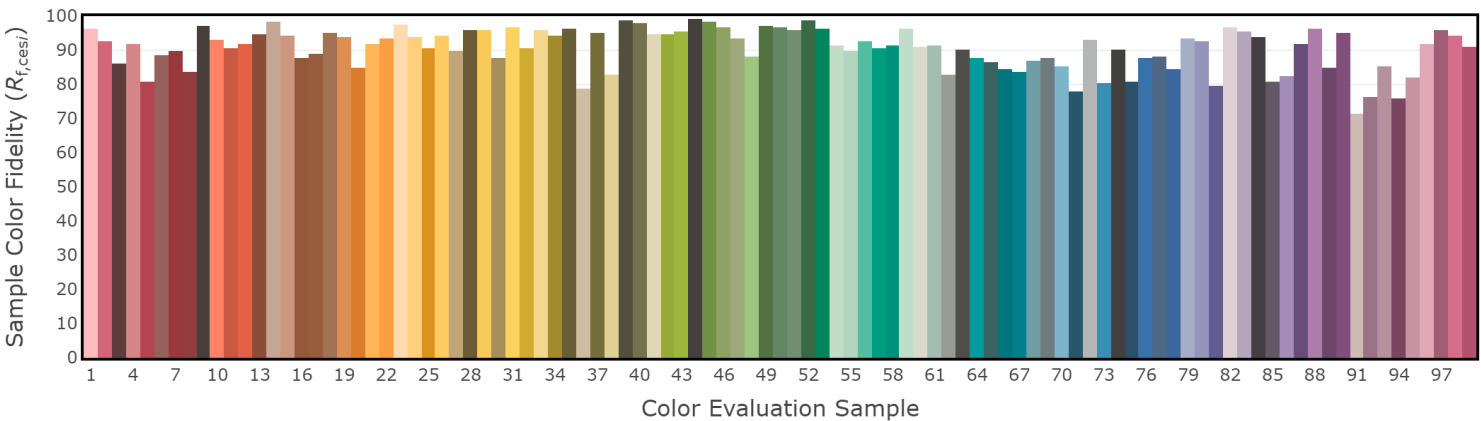
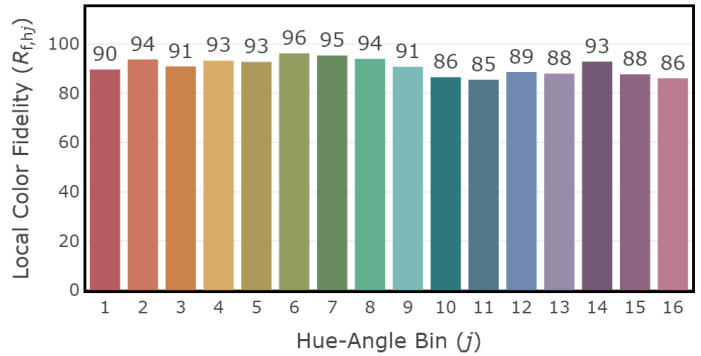
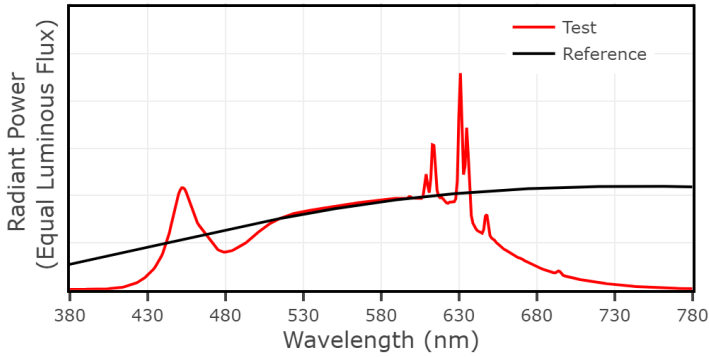
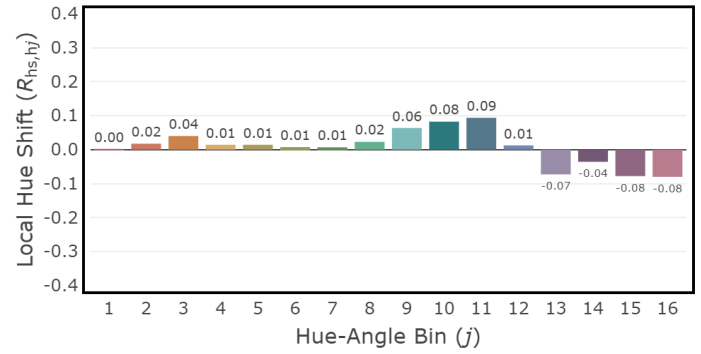
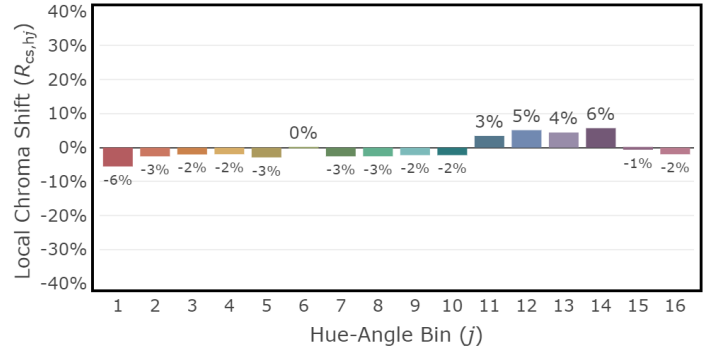
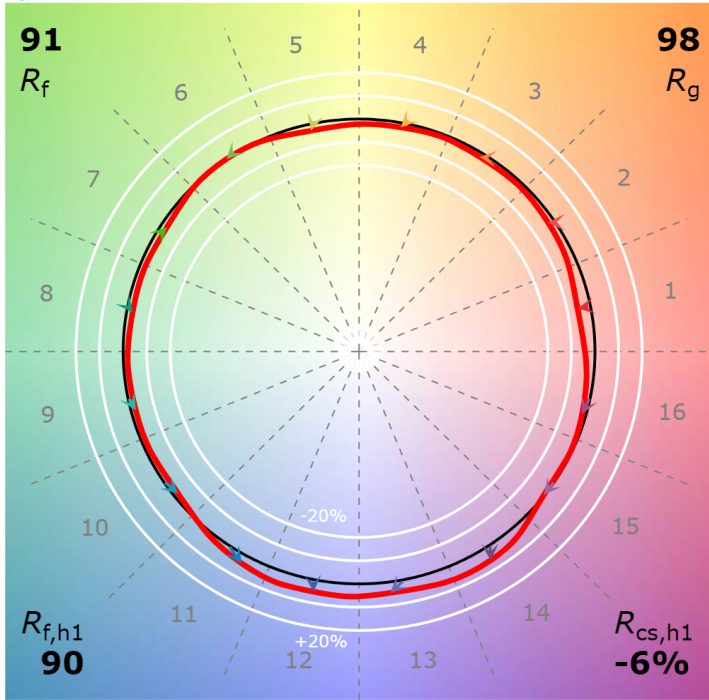
P2 V- F2



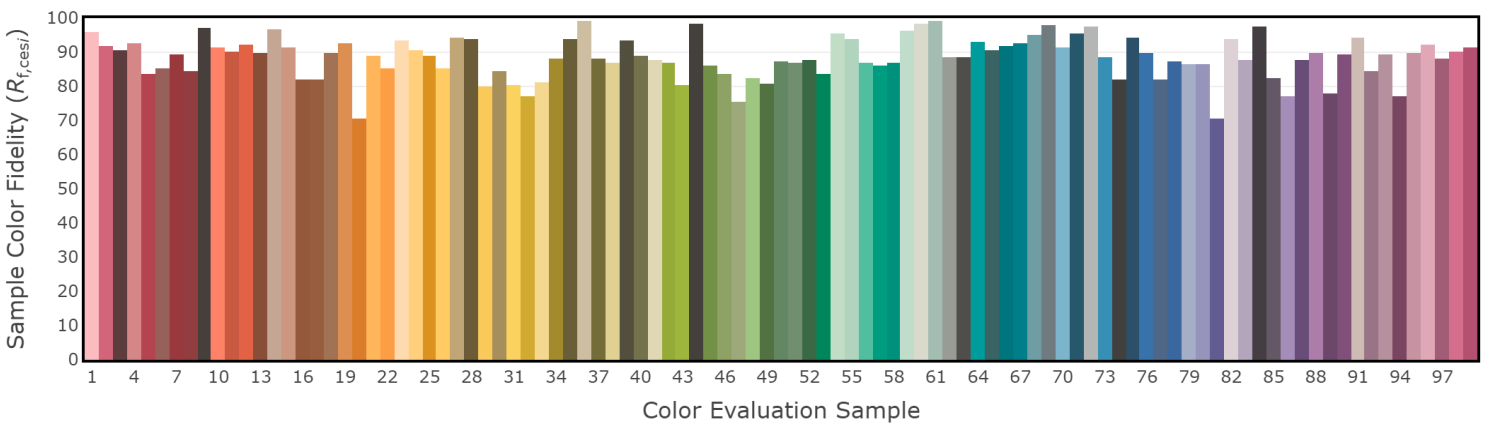
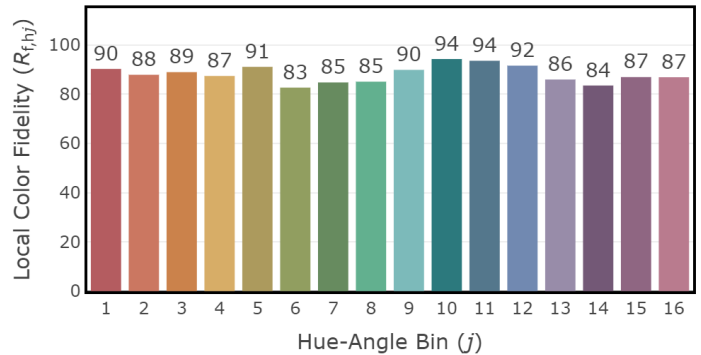
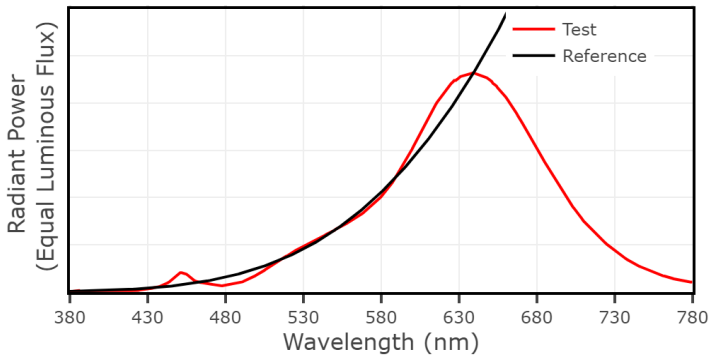
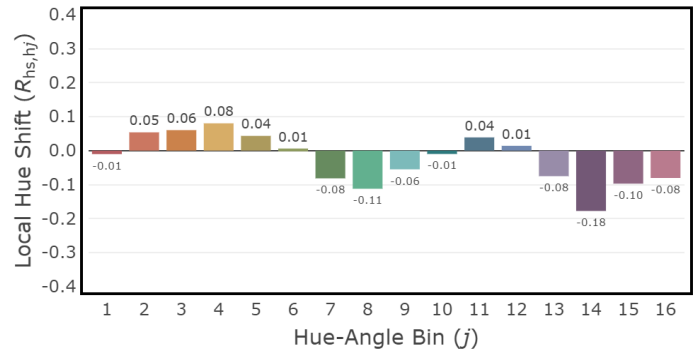
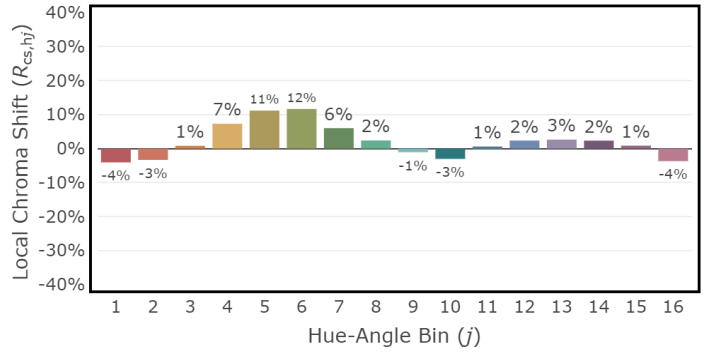
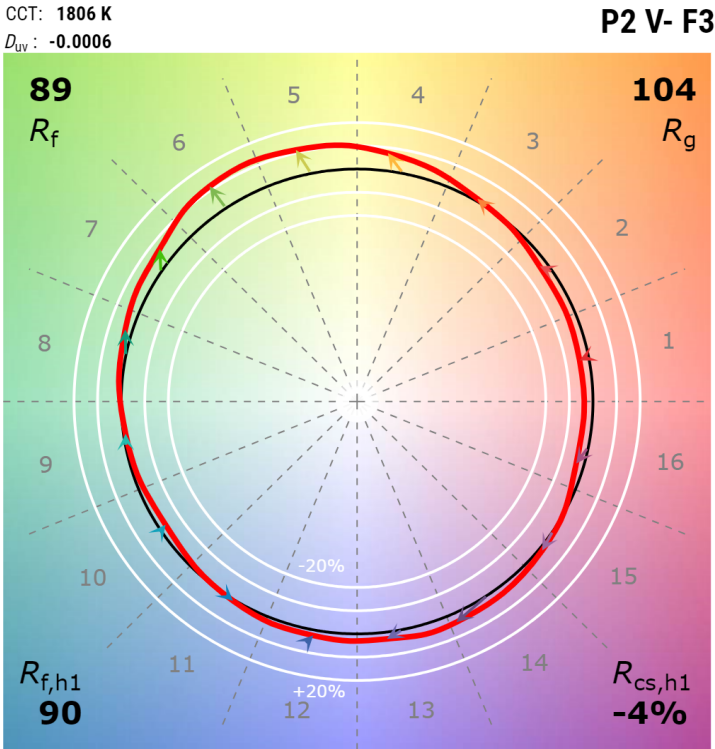
3" Downlight 4000K, 1500 lm

CCT: 3899 K  
 $D_{uv}$ : 0.0010

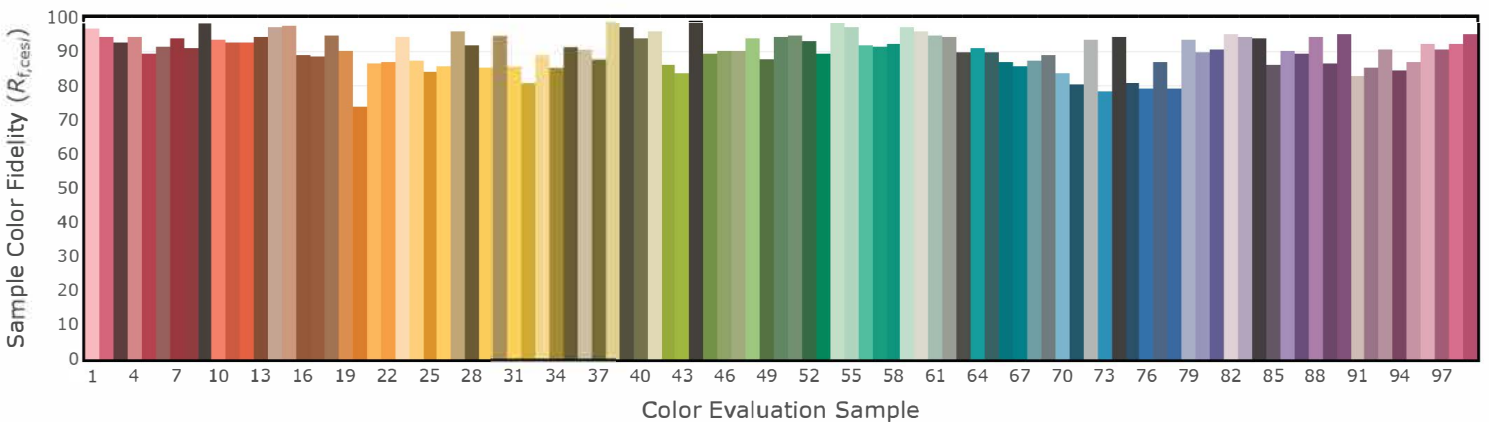
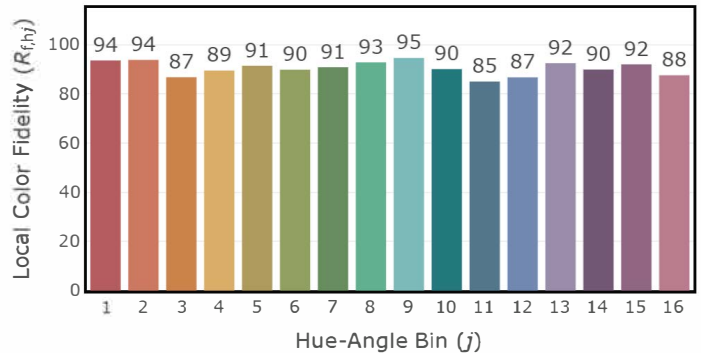
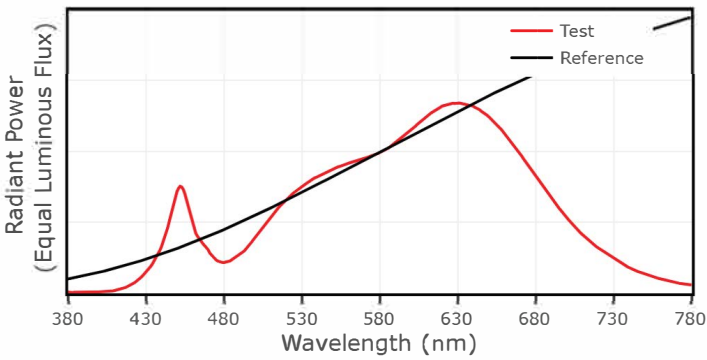
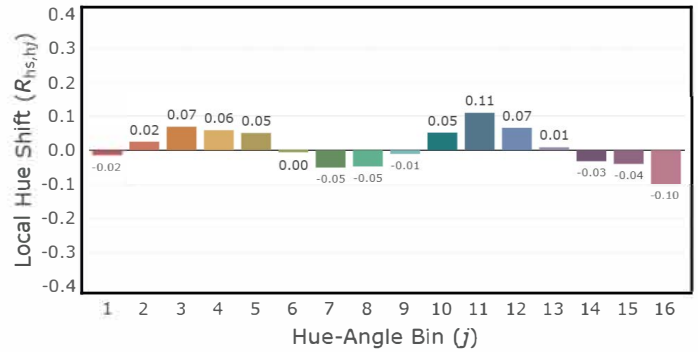
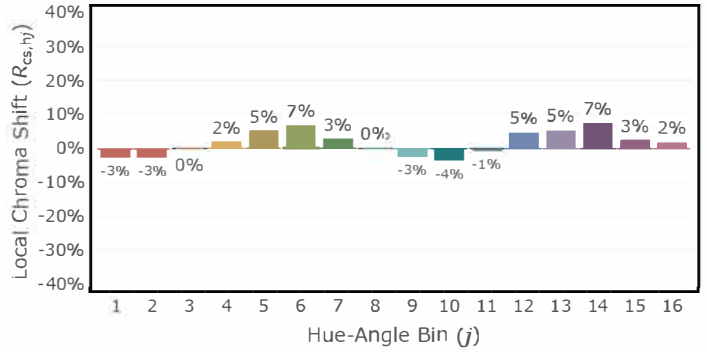
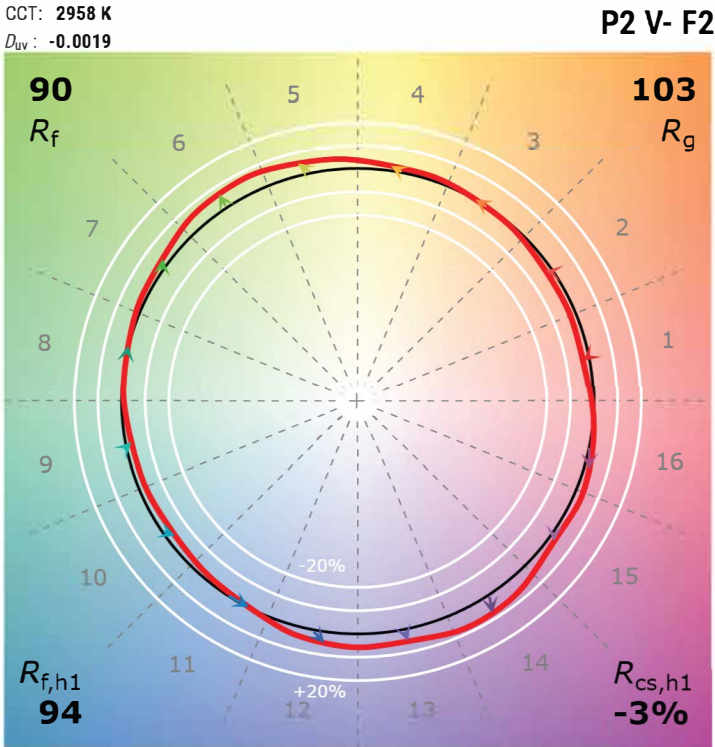
P2 V- F2



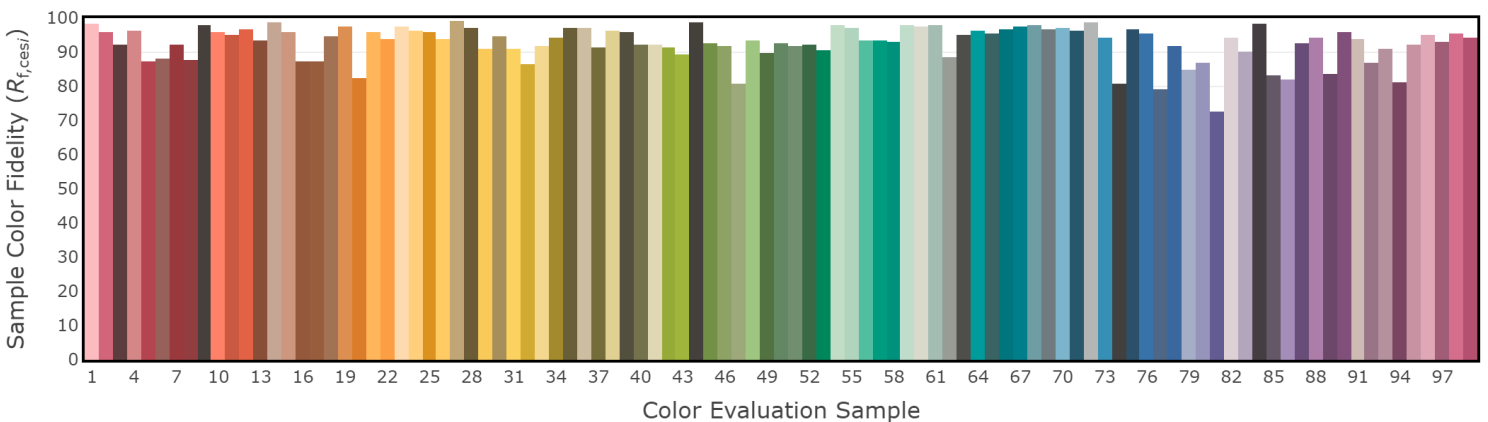
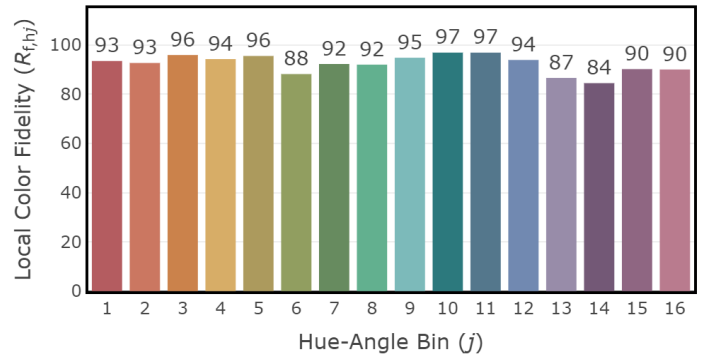
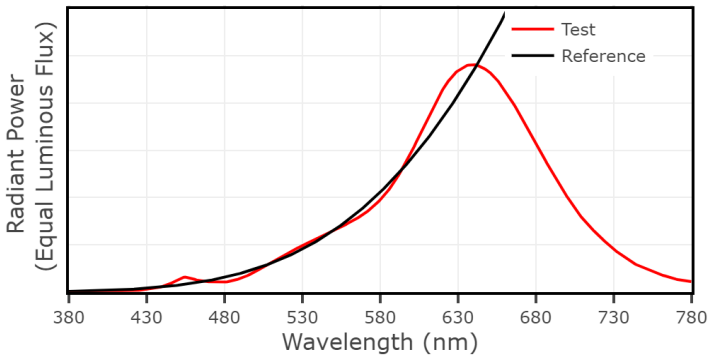
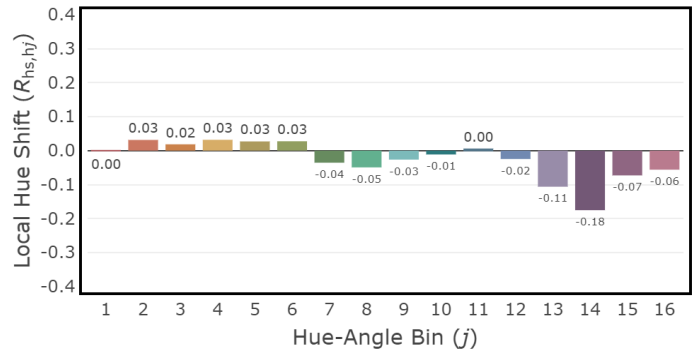
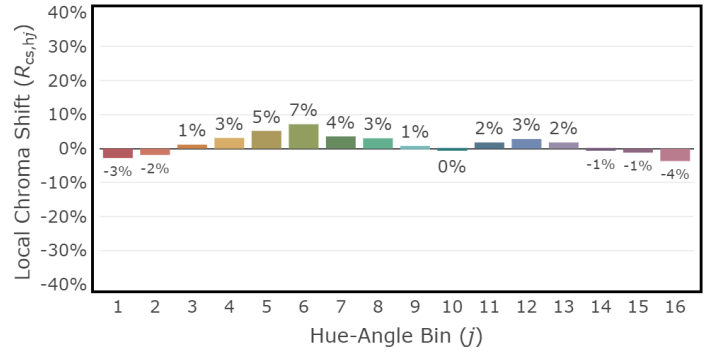
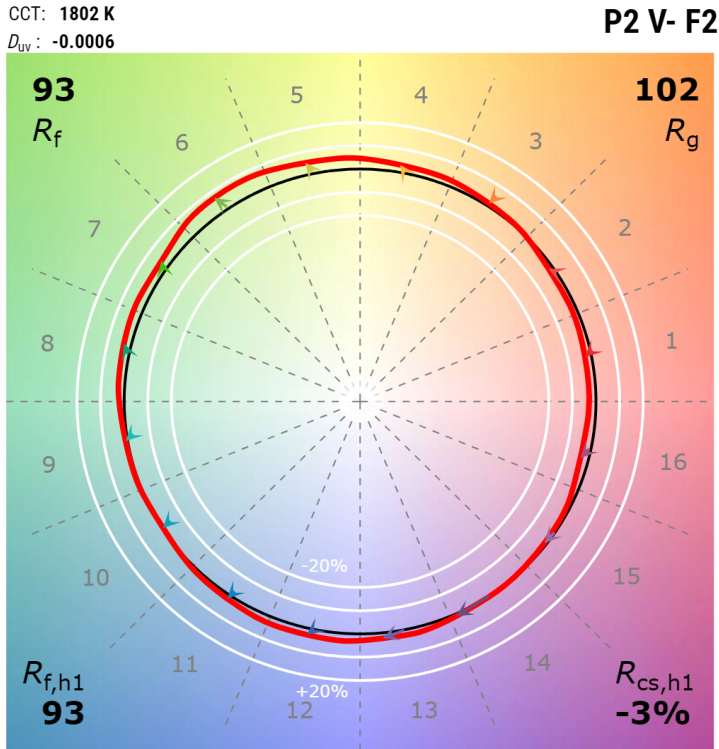
3" Downlight - Warm Dim 1800K, 43 lm



3" Downlight - Warm Dim 3000K, 1000 lm



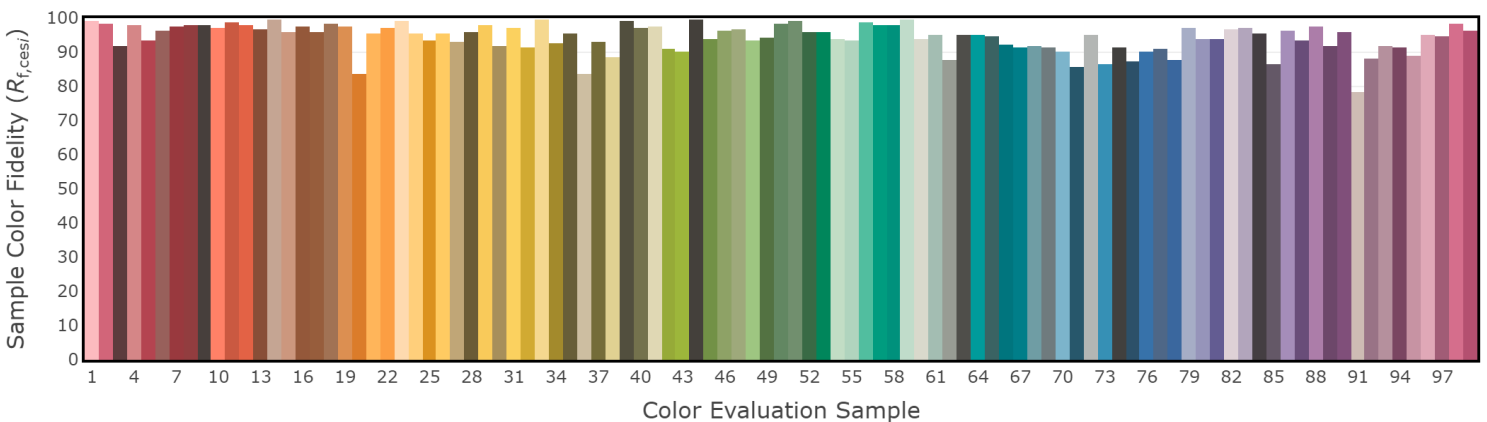
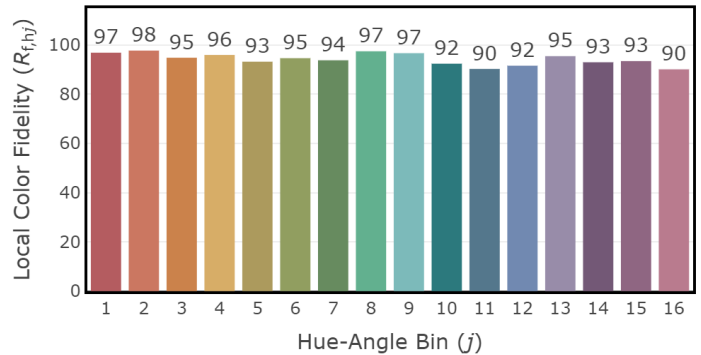
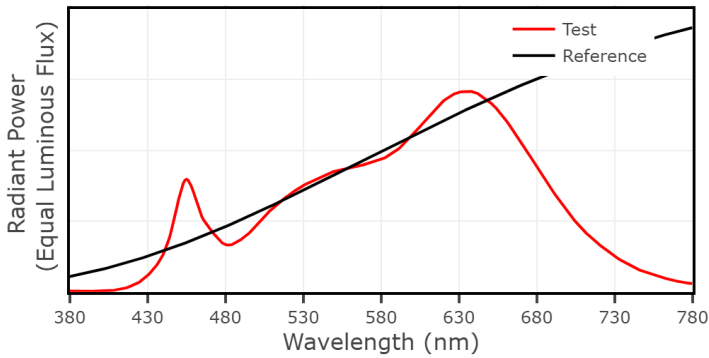
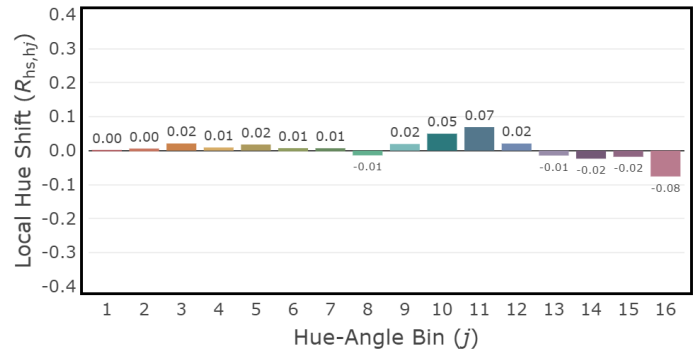
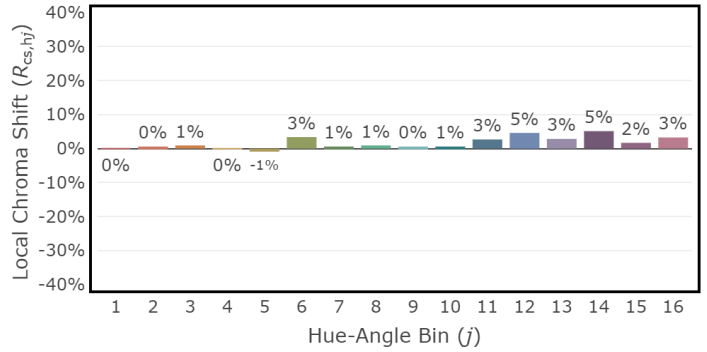
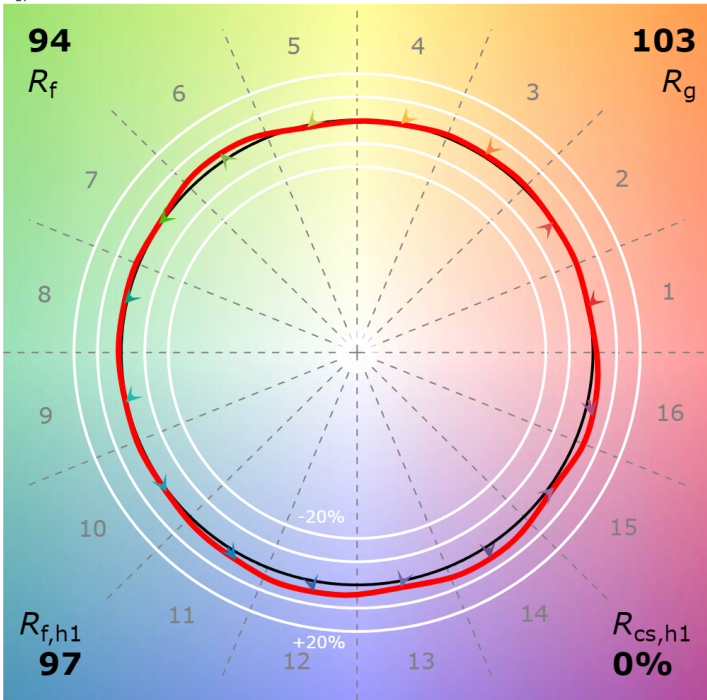
## 3" Downlight - T1 Tunable White 1800K, 1000 lm



## 3" Downlight - T1 Tunable White 3000K, 1000 lm

CCT: 3015 K  
 $D_{uv}$ : -0.0042

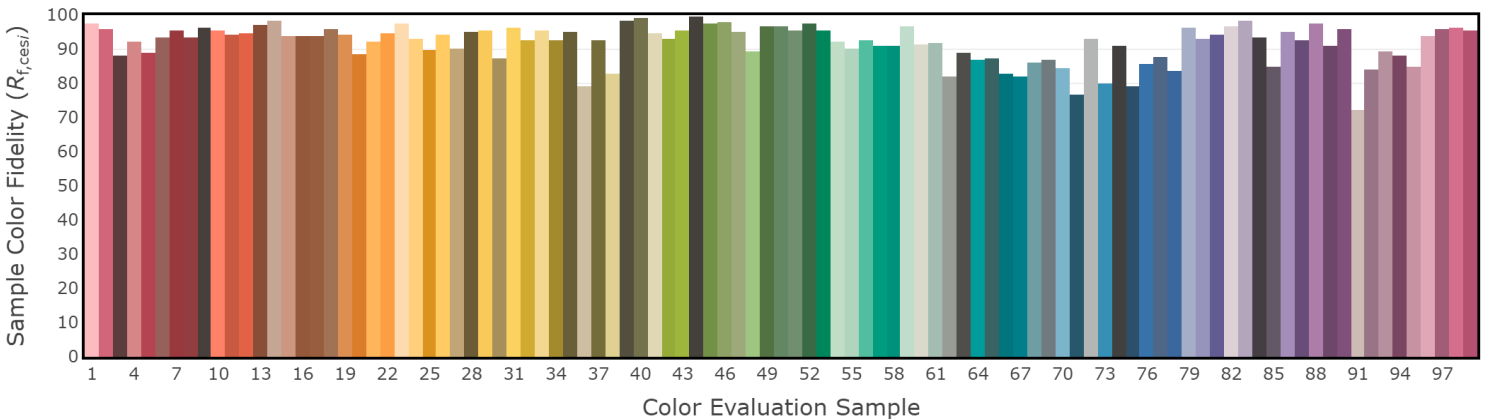
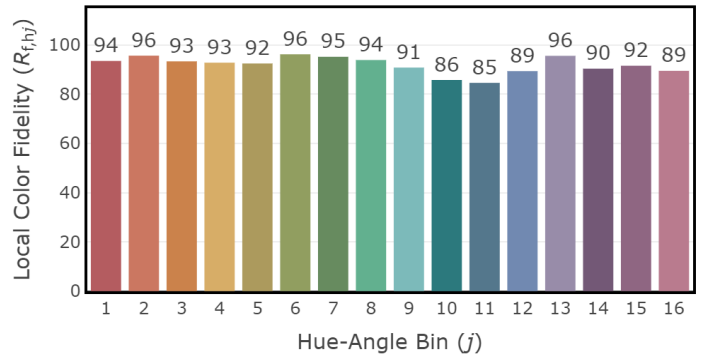
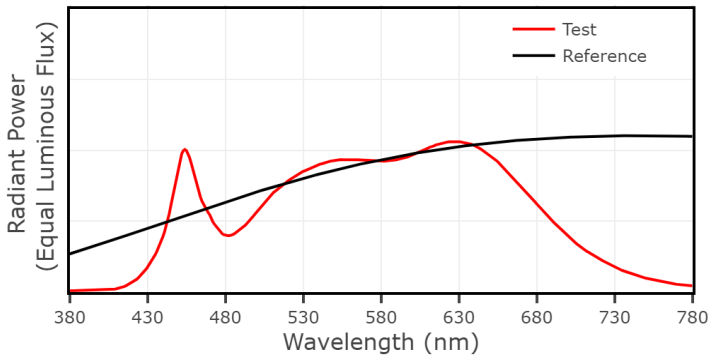
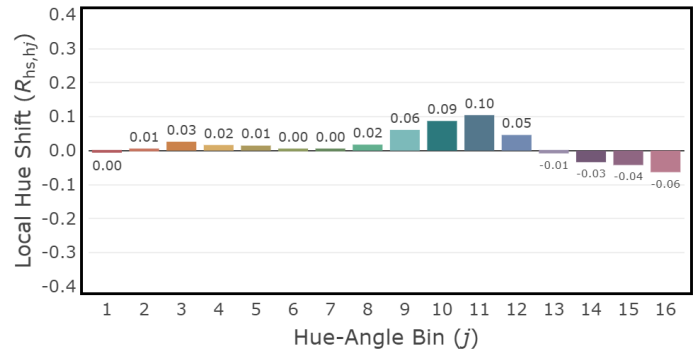
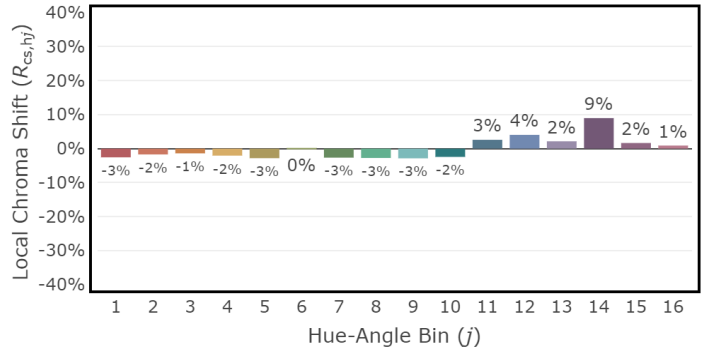
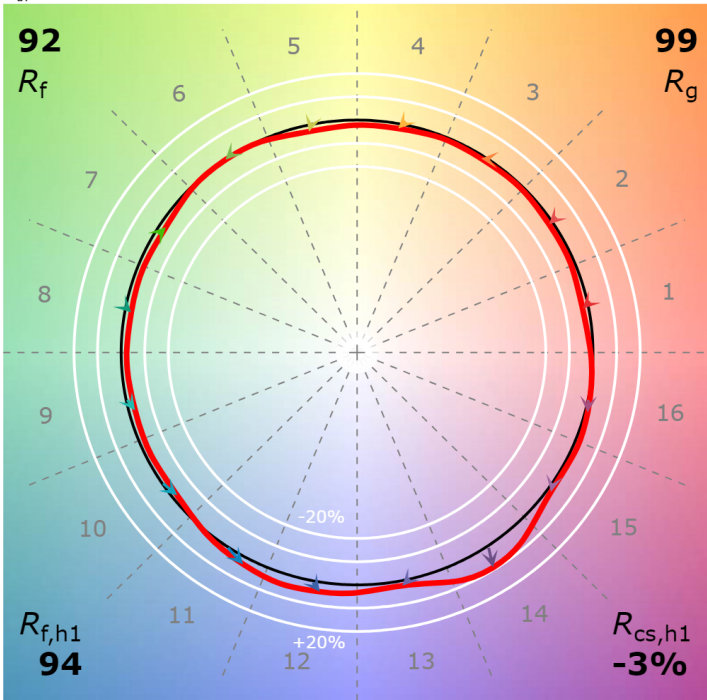
P1 V3 F2



## 3" Downlight - T1 Tunable White 4000K, 1000 lm

CCT: **3888 K**  
 $D_{uv}$ : **0.0020**

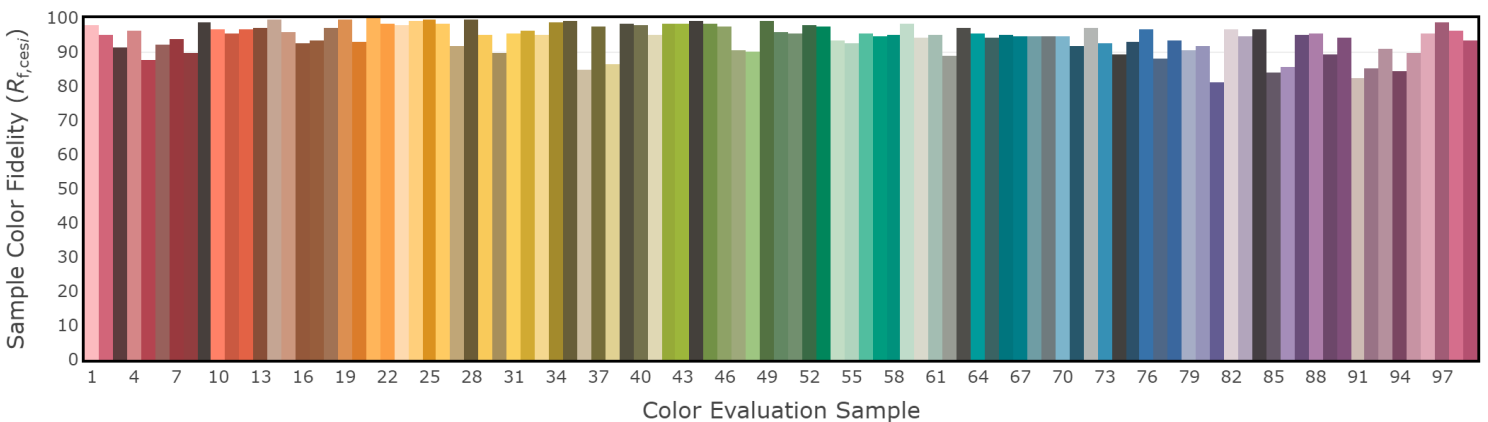
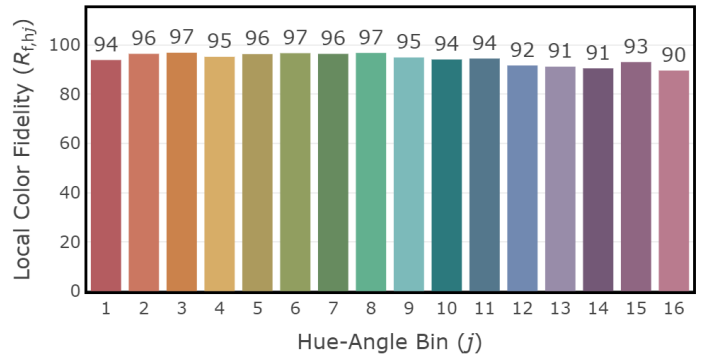
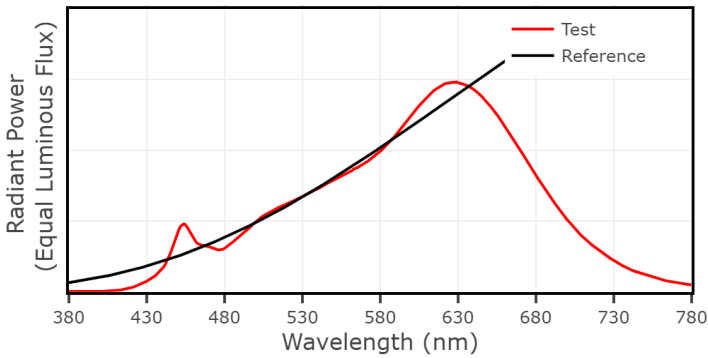
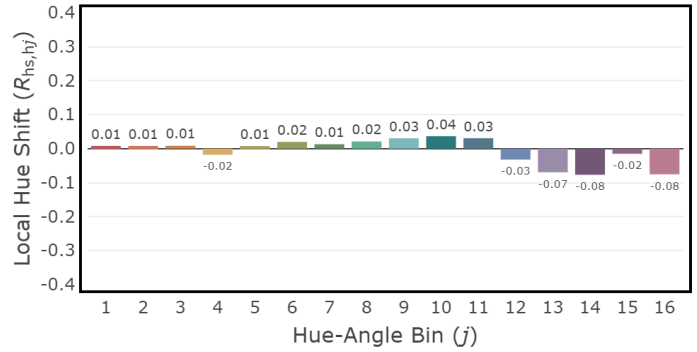
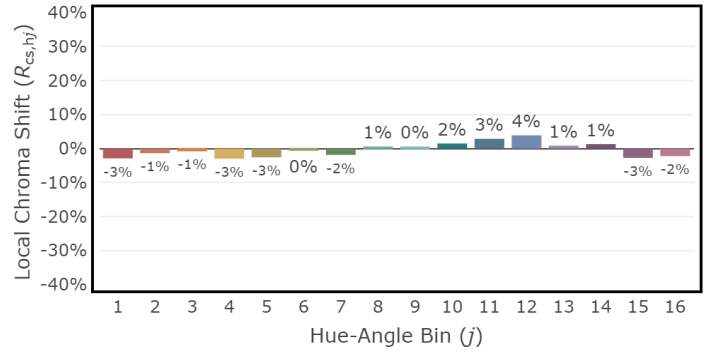
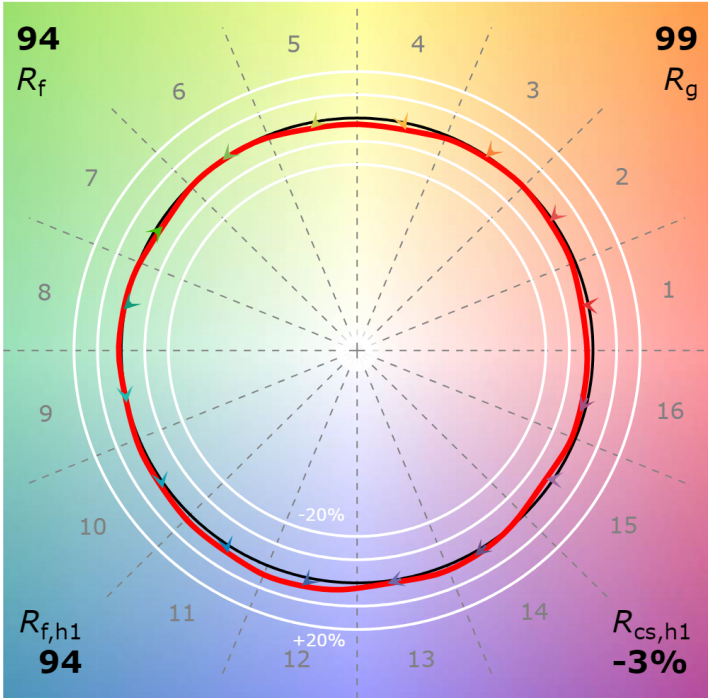
**P2 V- F2**



## 3" Downlight - T2 Tunable White 2700K, 1000 lm

CCT: 2690 K  
 $D_{uv}$ : -0.0000

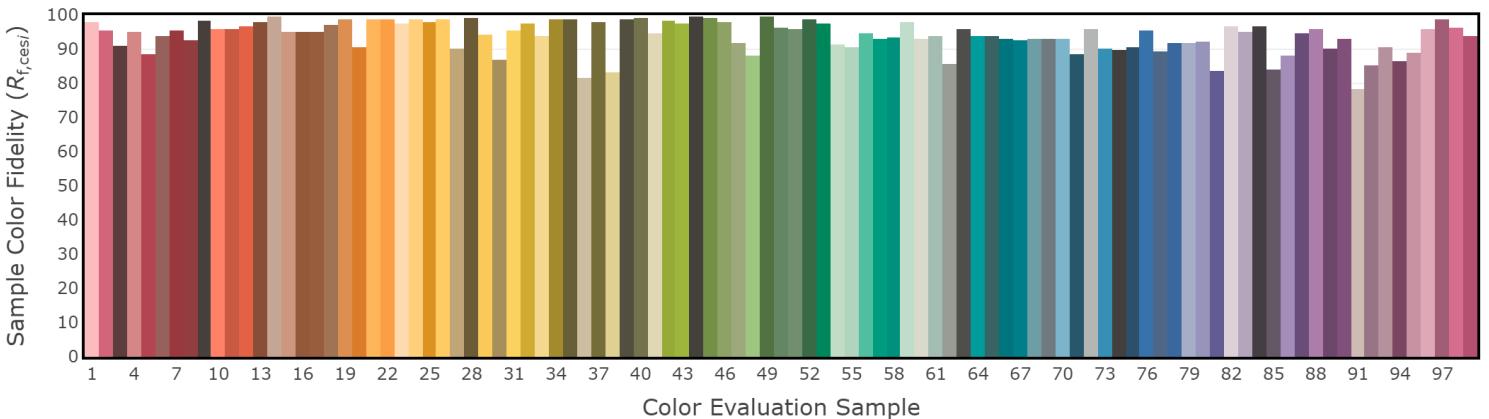
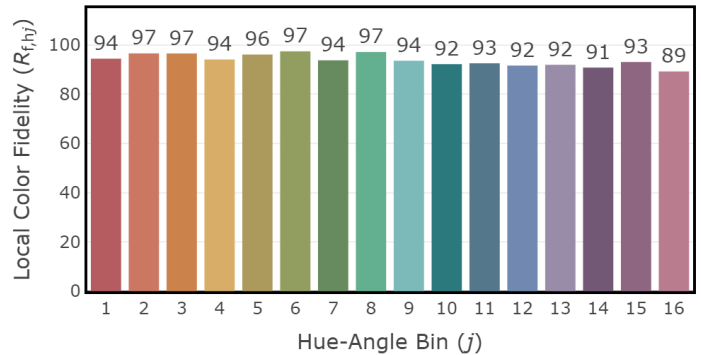
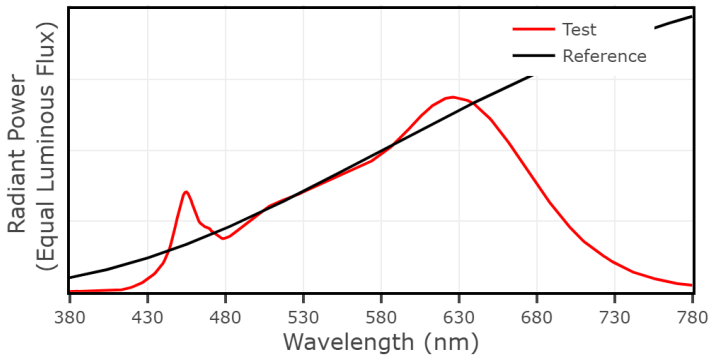
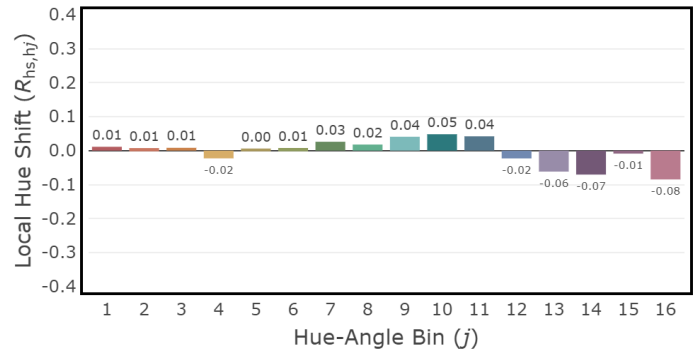
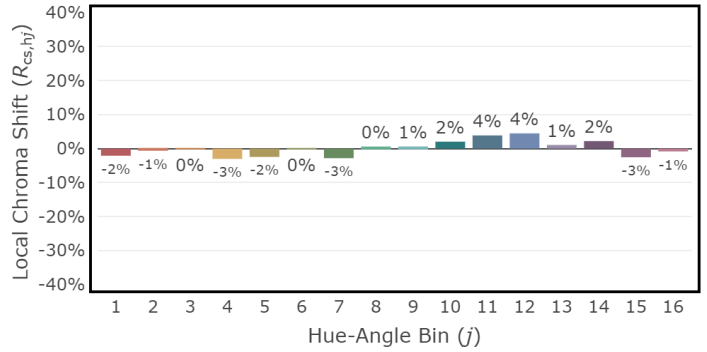
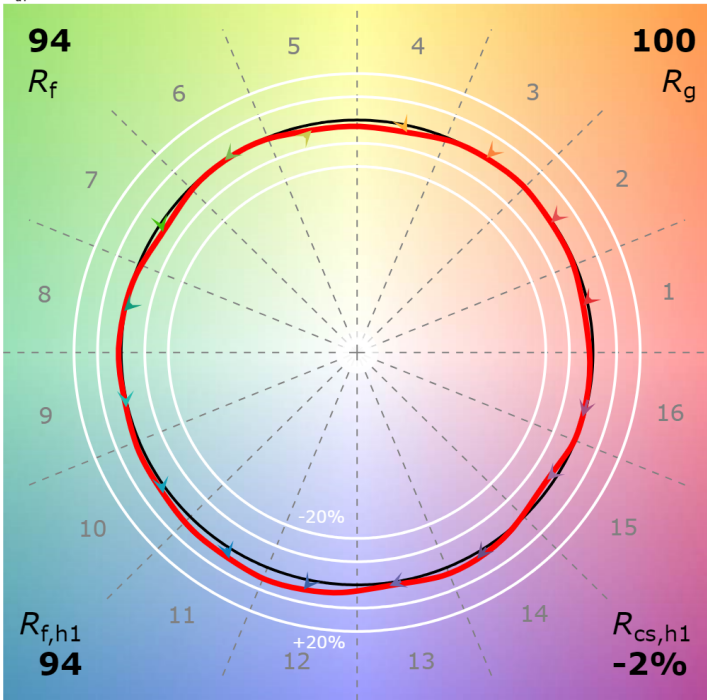
P2 V- F2



## 3" Downlight - T2 Tunable White 3000K, 1000 lm

CCT: 2961 K  
 $D_{uv}$ : -0.0024

P2 V- F2



## 3" Downlight - T2 Tunable White 6500K, 1000 lm

CCT: 6213 K  
 $D_{uv}$ : 0.0038

P2 V- F2

