



3" Cylinder

TM-30 Color Rendition Reports

2400K

750-1000 lm

2700K

750-1250 lm

1500 lm

3000K

750-1250 lm

1500 lm

3500K

750-1250 lm

1500 lm

4000K

750-1250 lm

1500 lm

Warm Dim

1800K

3000K

T1 Tunable White

1800K

3000K

4000K

T2 Tunable White

2700K

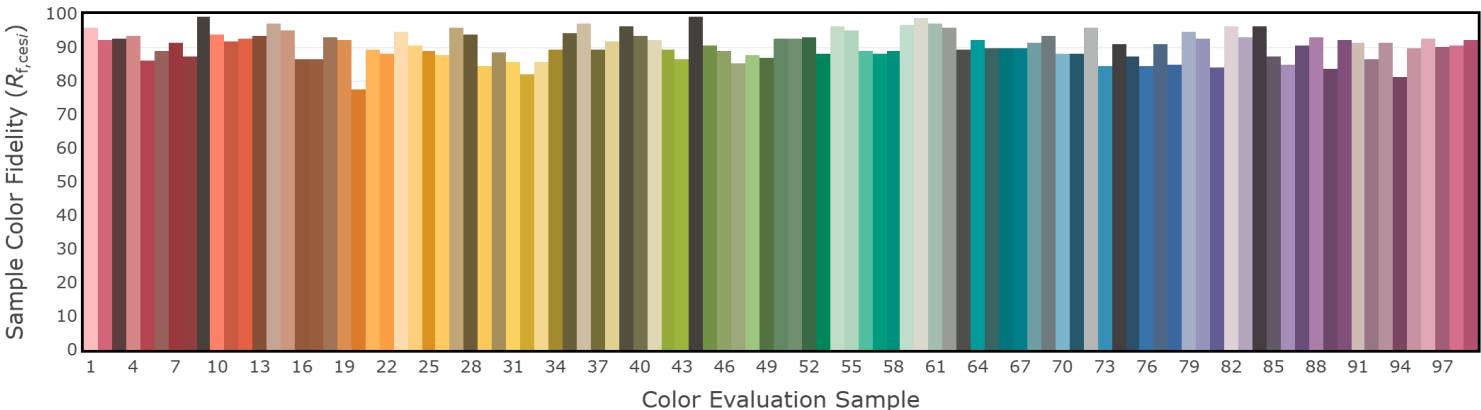
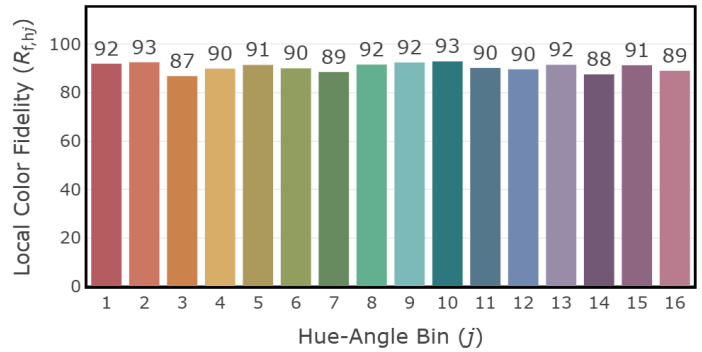
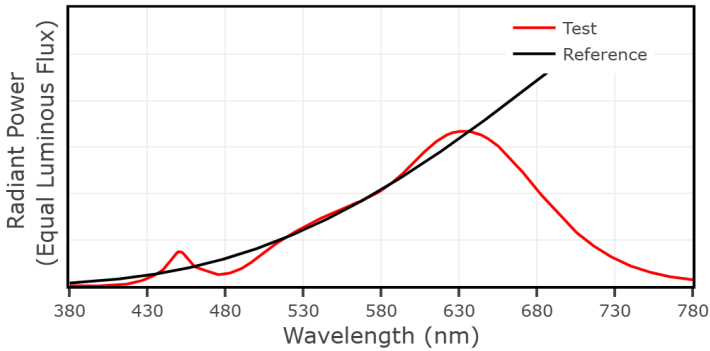
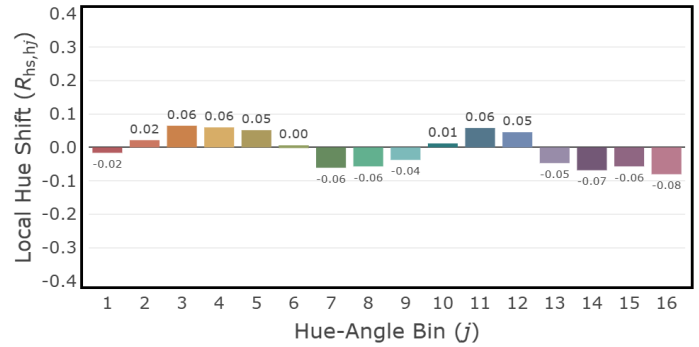
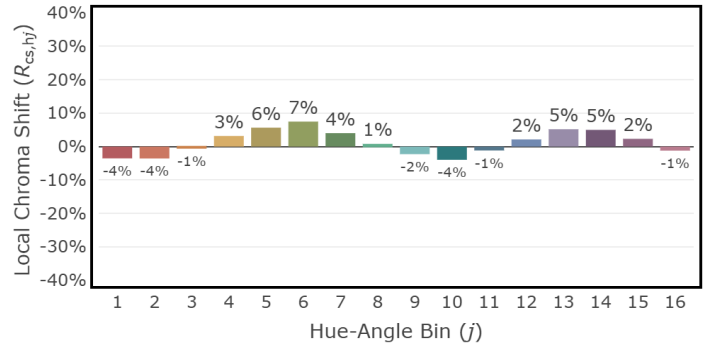
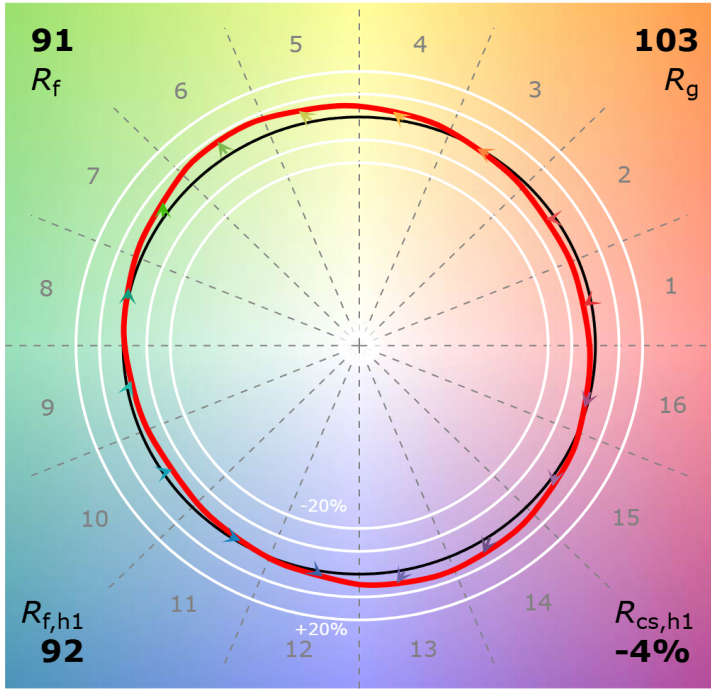
3000K

6500K

3" Cylinder 2400K, 750-1000 lm

CCT: 2351 K
 D_{uv} : 0.0006

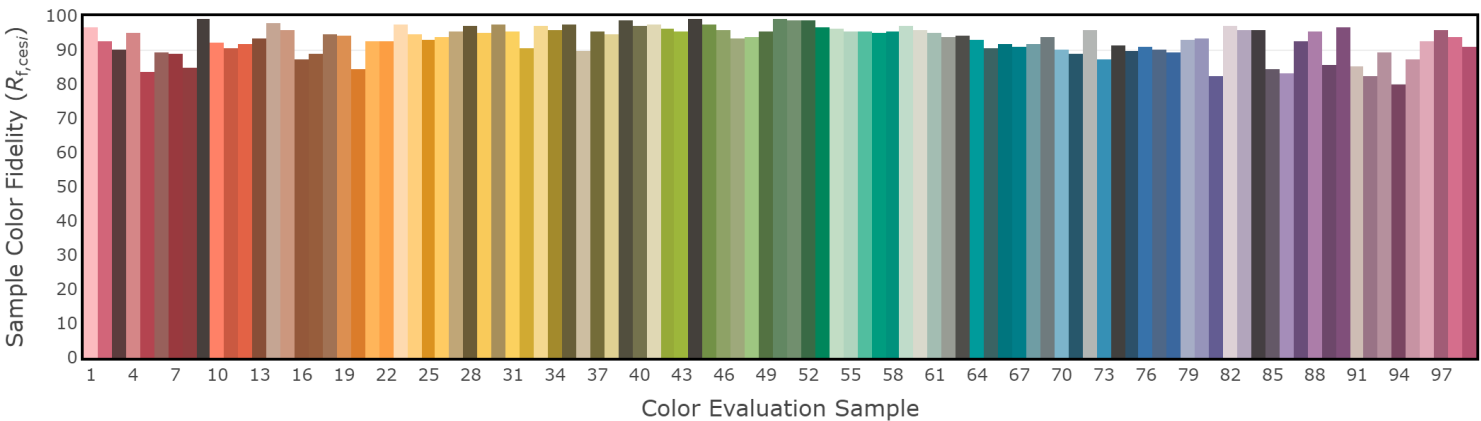
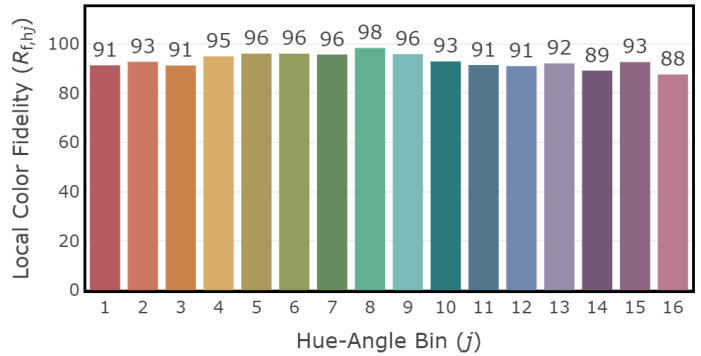
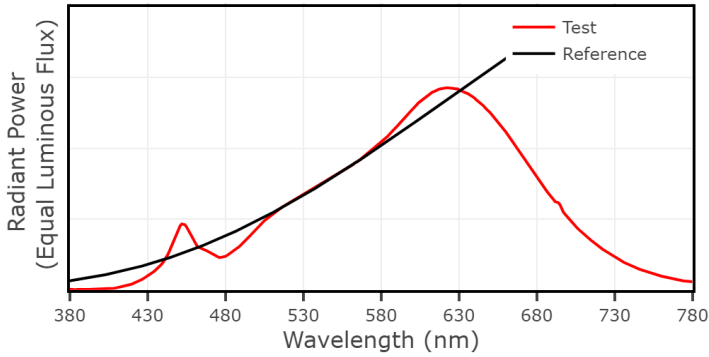
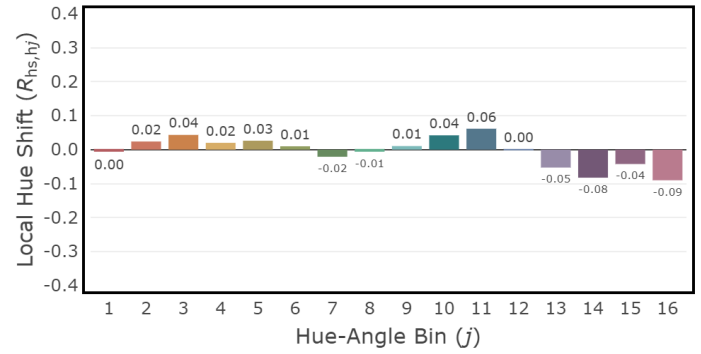
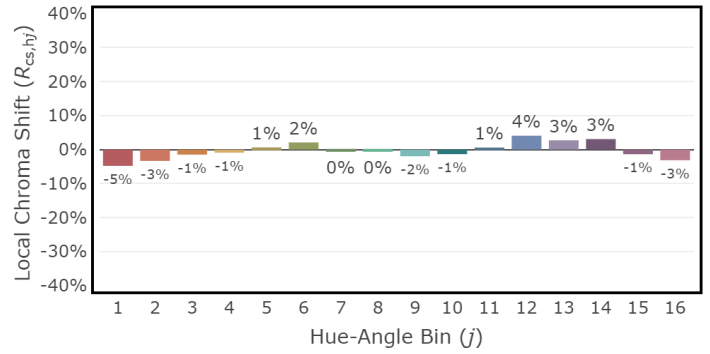
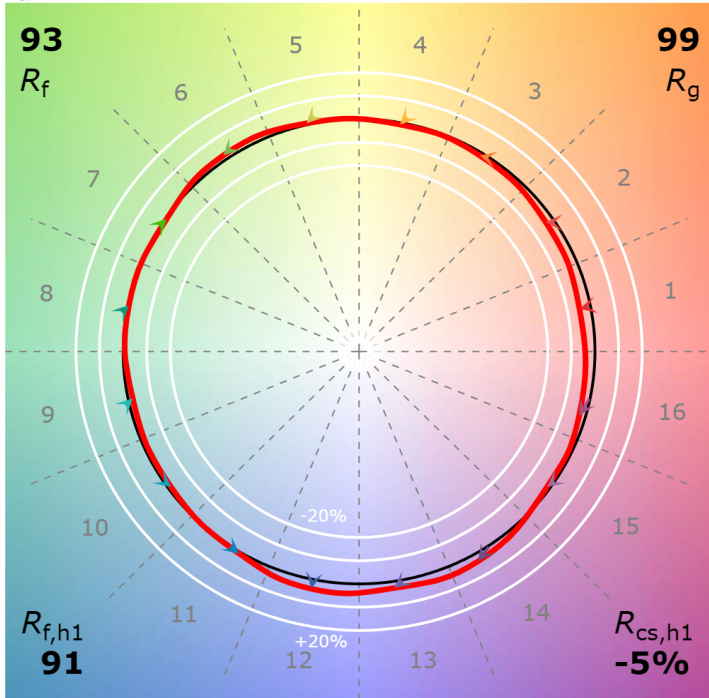
P2 V- F2



3" Cylinder 2700K, 750-1250 lm

CCT: 2678 K
 D_{uv} : 0.0009

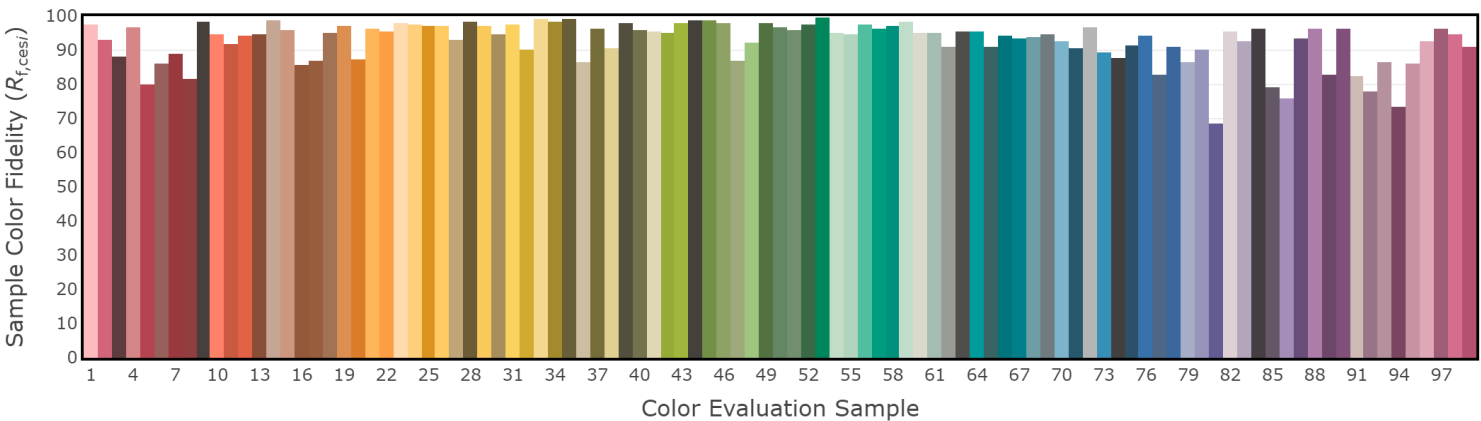
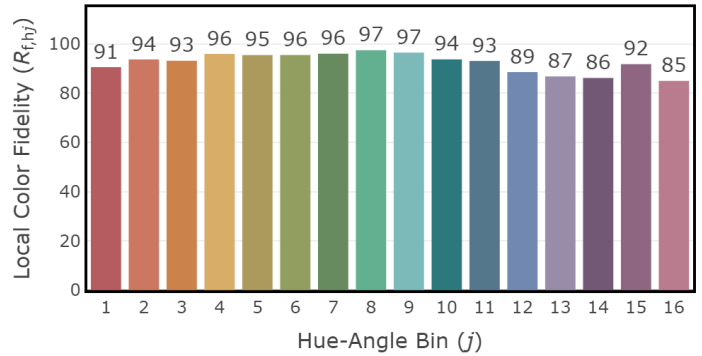
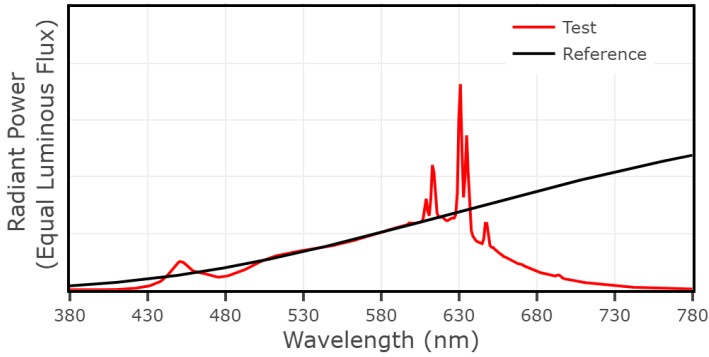
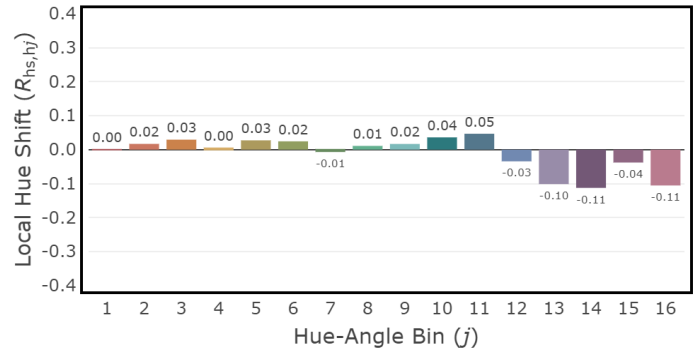
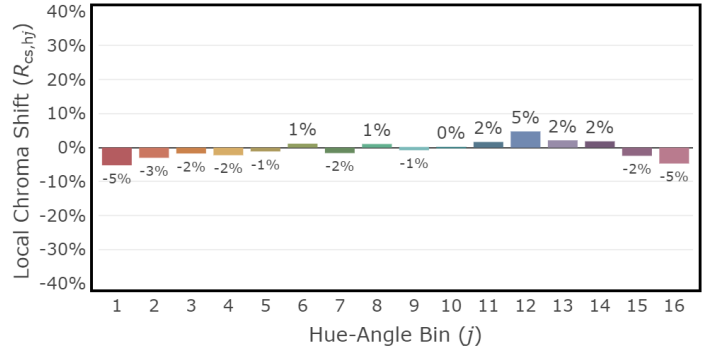
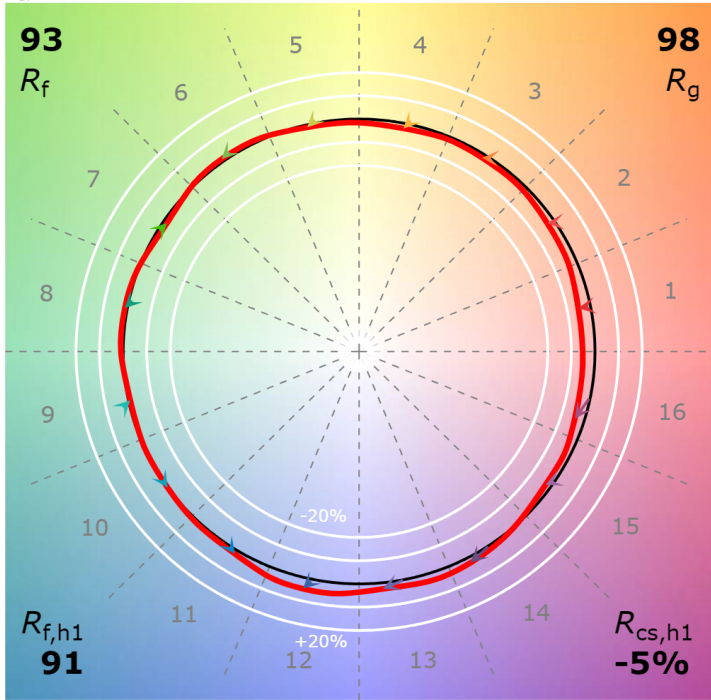
P2 V- F2



3" Cylinder 2700K, 1500 lm

CCT: 2728 K
 D_{uv} : 0.0017

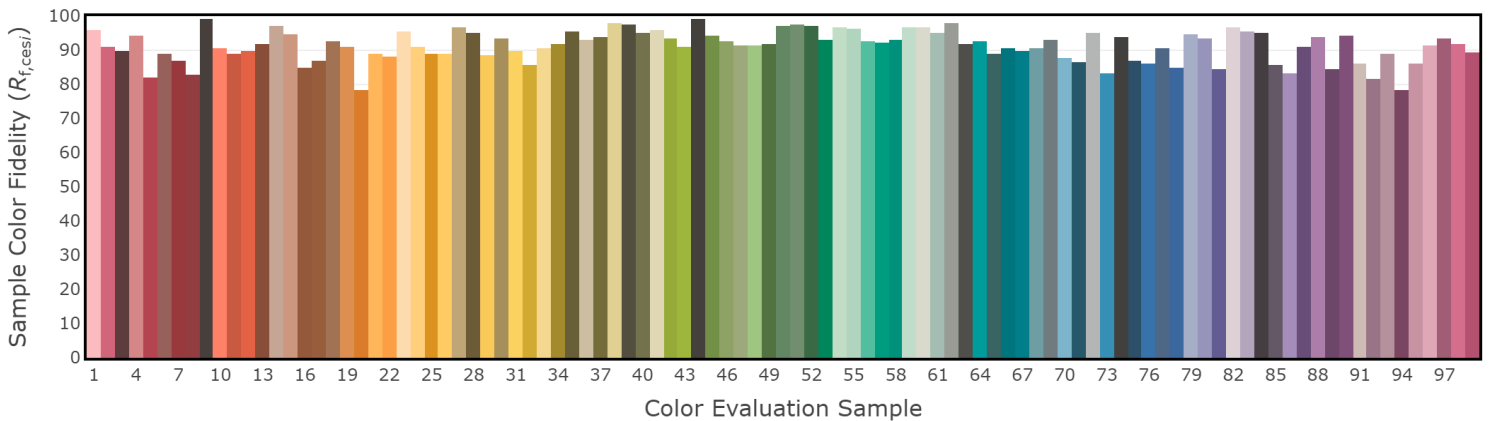
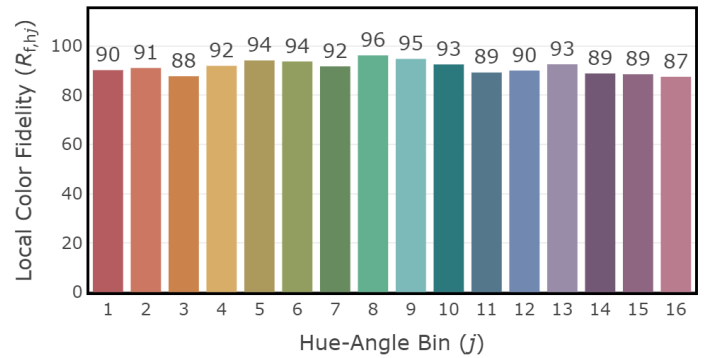
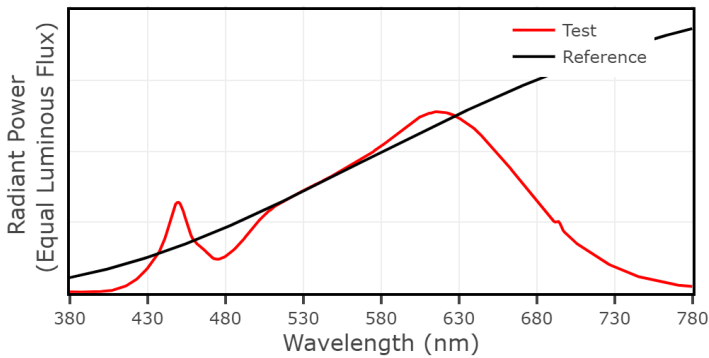
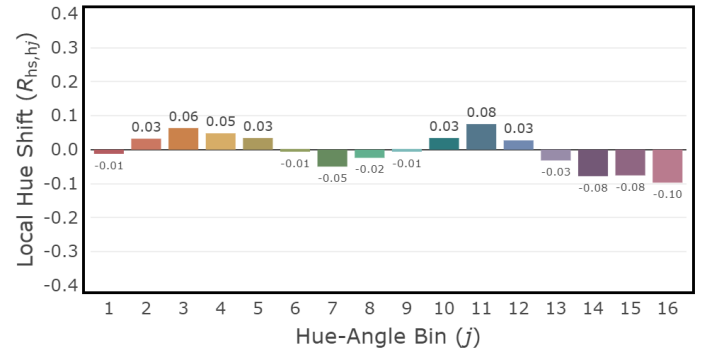
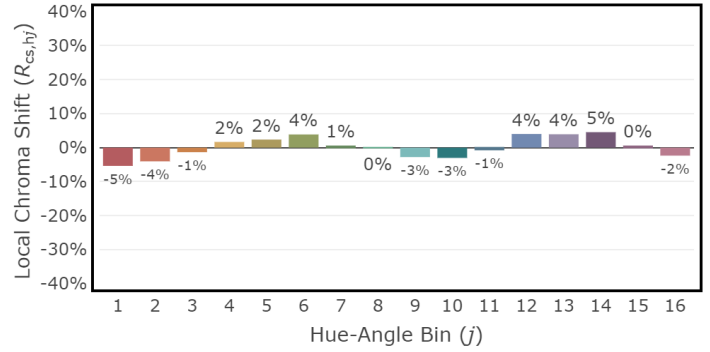
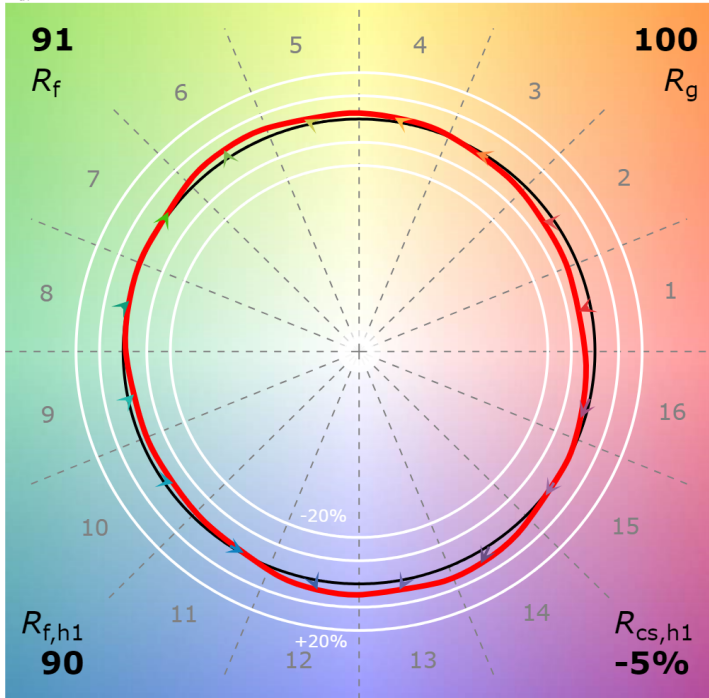
P2 V- F2



3" Cylinder 3000K, 750-1250 lm

CCT: 3014 K
 D_{uv} : 0.0005

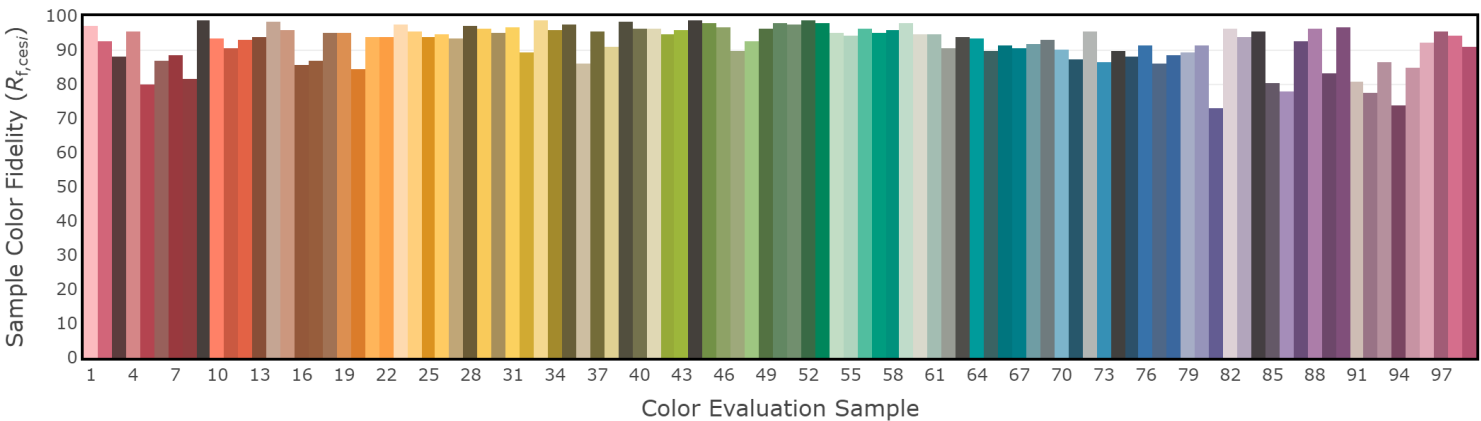
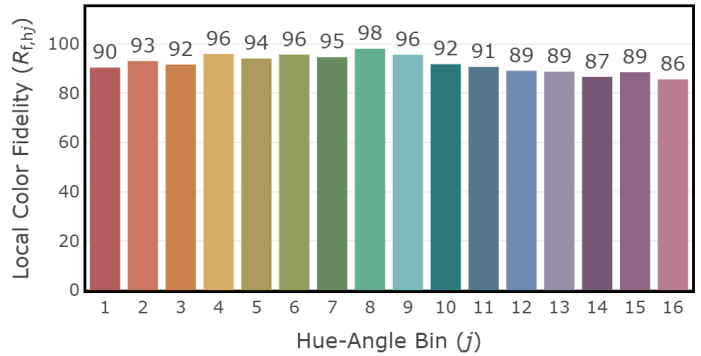
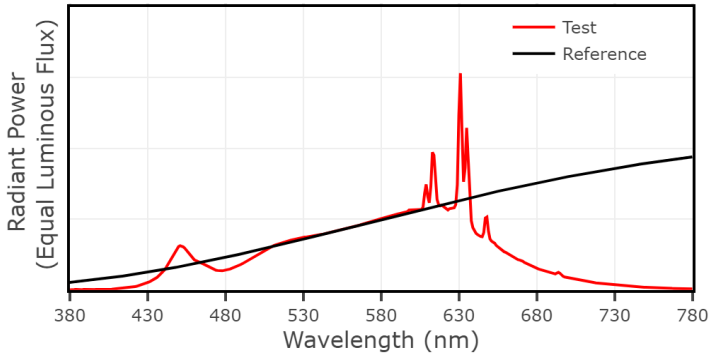
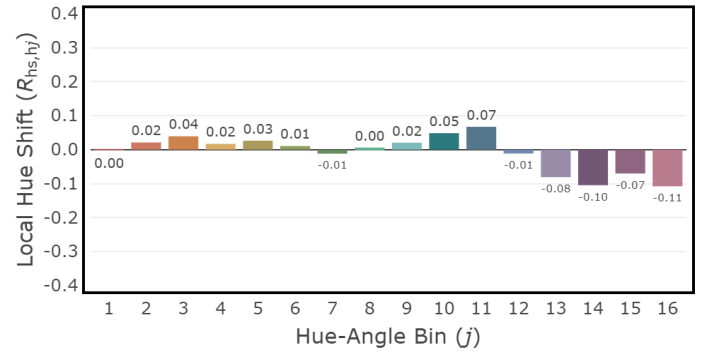
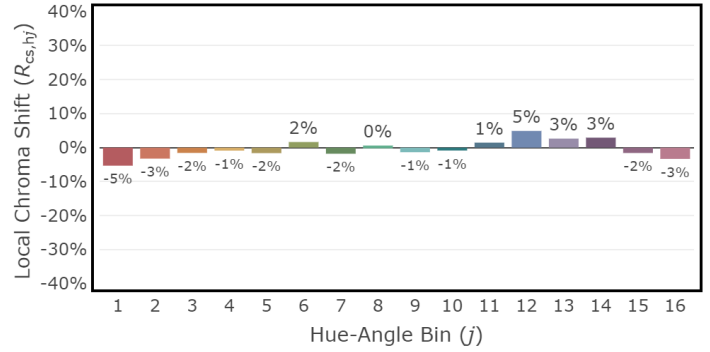
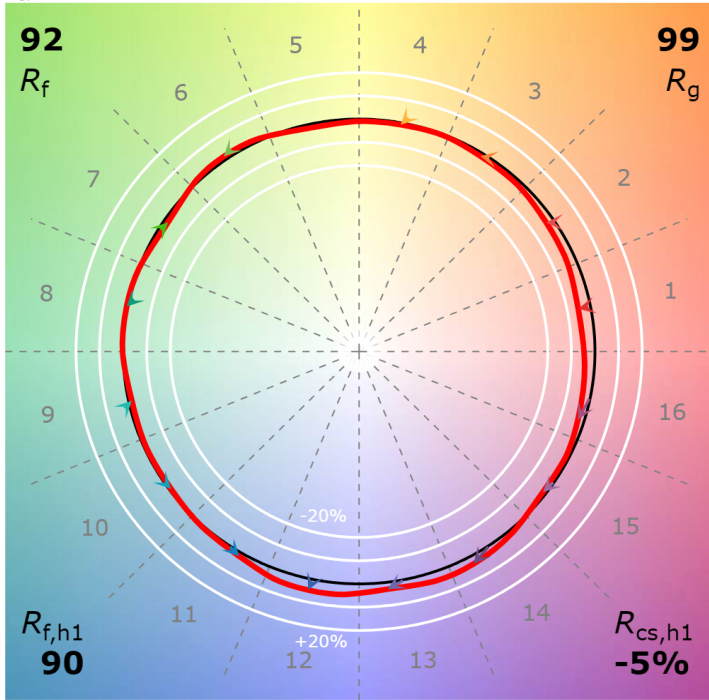
P2 V- F2



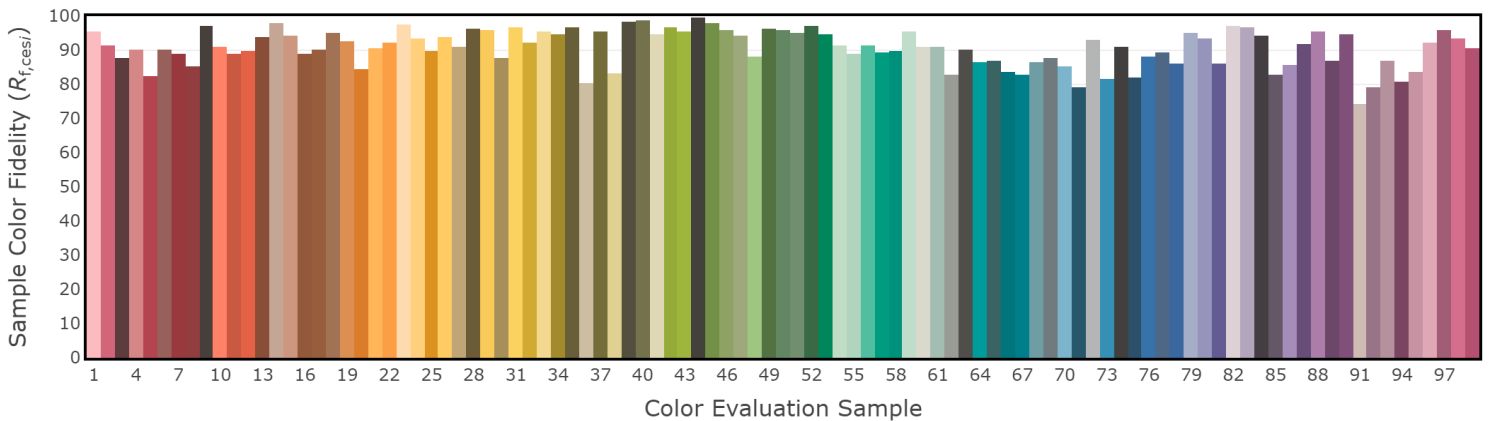
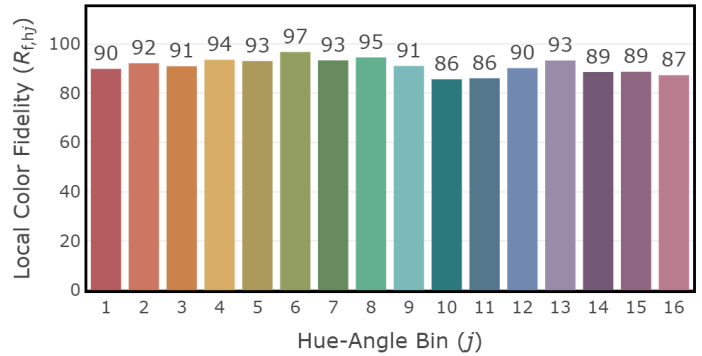
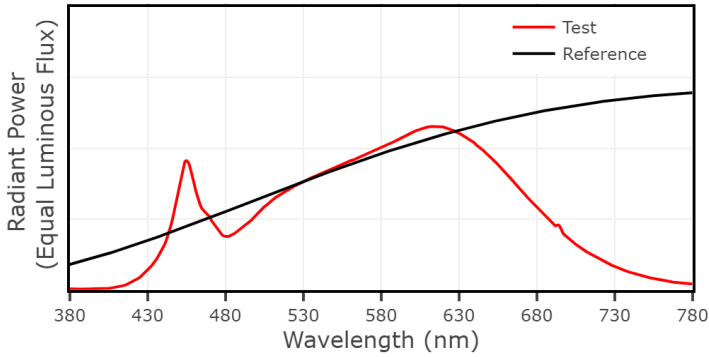
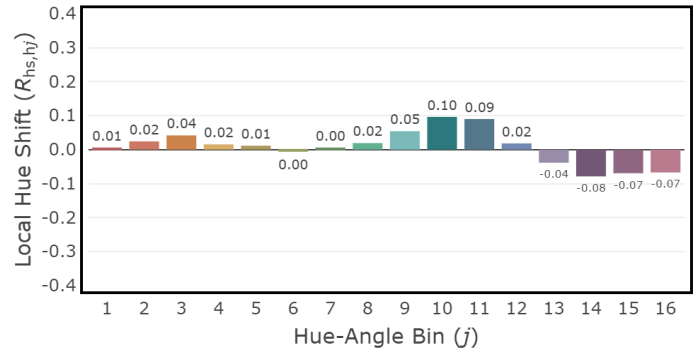
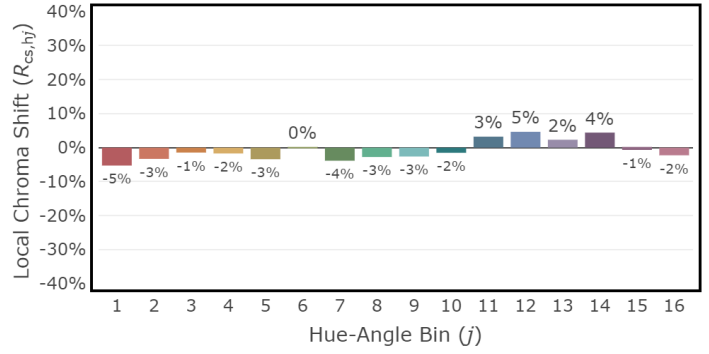
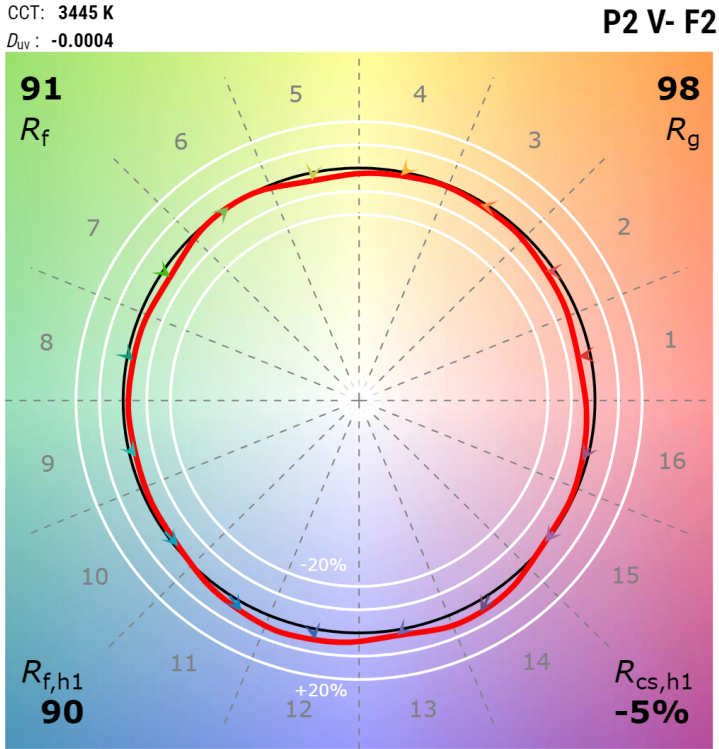
3" Cylinder 3000K, 1500 lm

CCT: 3005 K
 D_{uv} : 0.0013

P2 V- F2



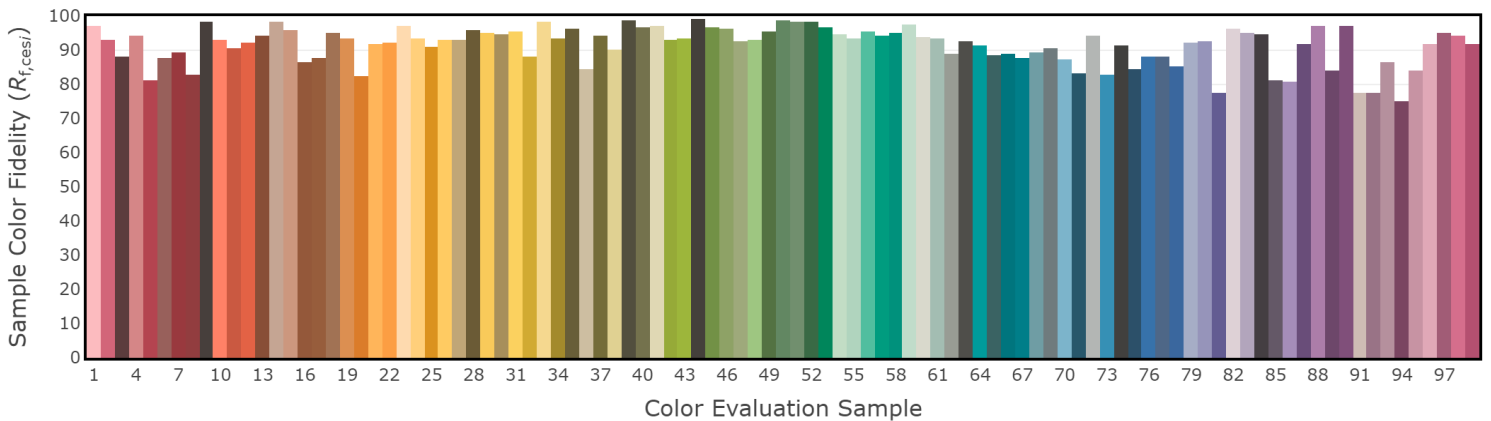
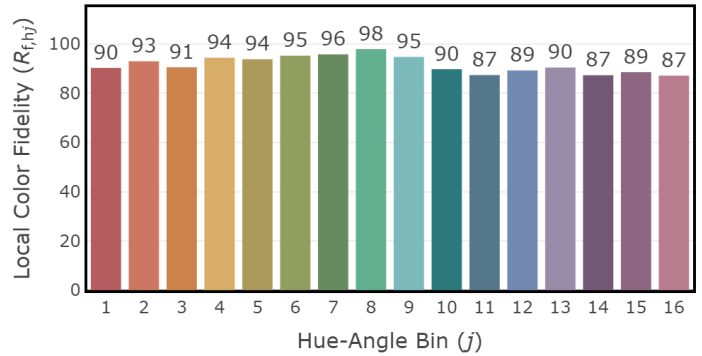
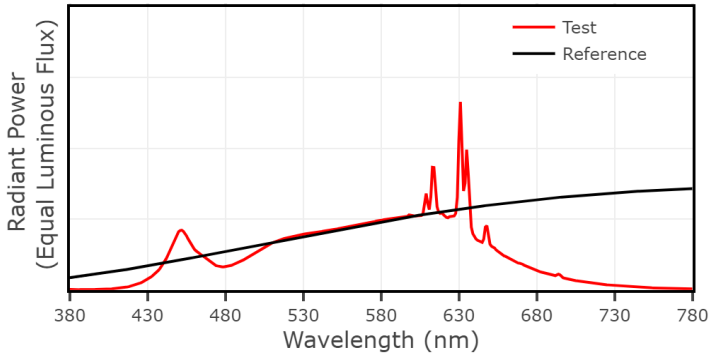
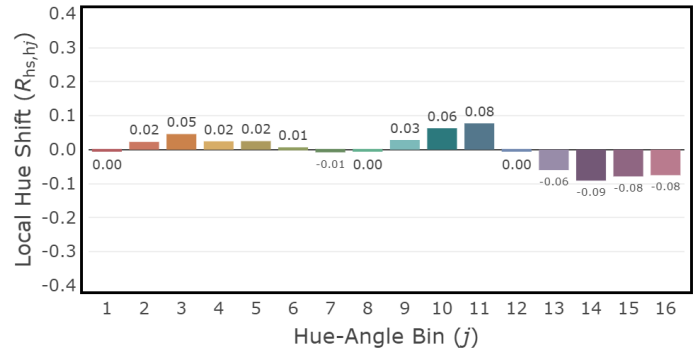
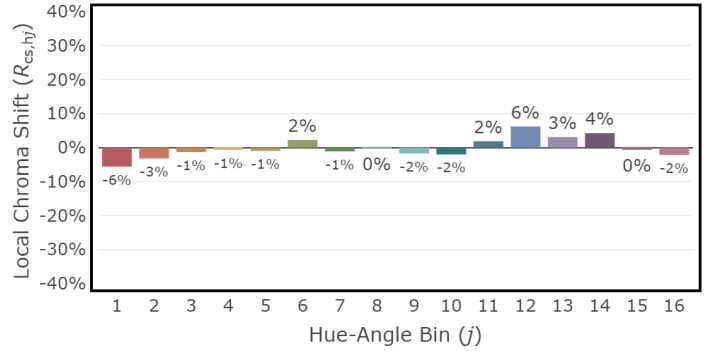
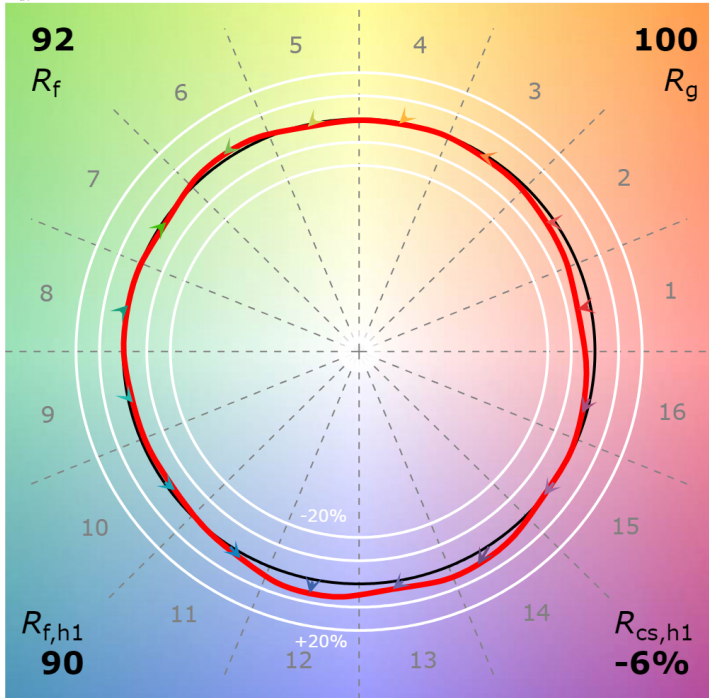
3" Cylinder 3500K, 750-1250 lm



3" Cylinder 3500K, 1500 lm

CCT: 3400 K
 D_{uv} : 0.0002

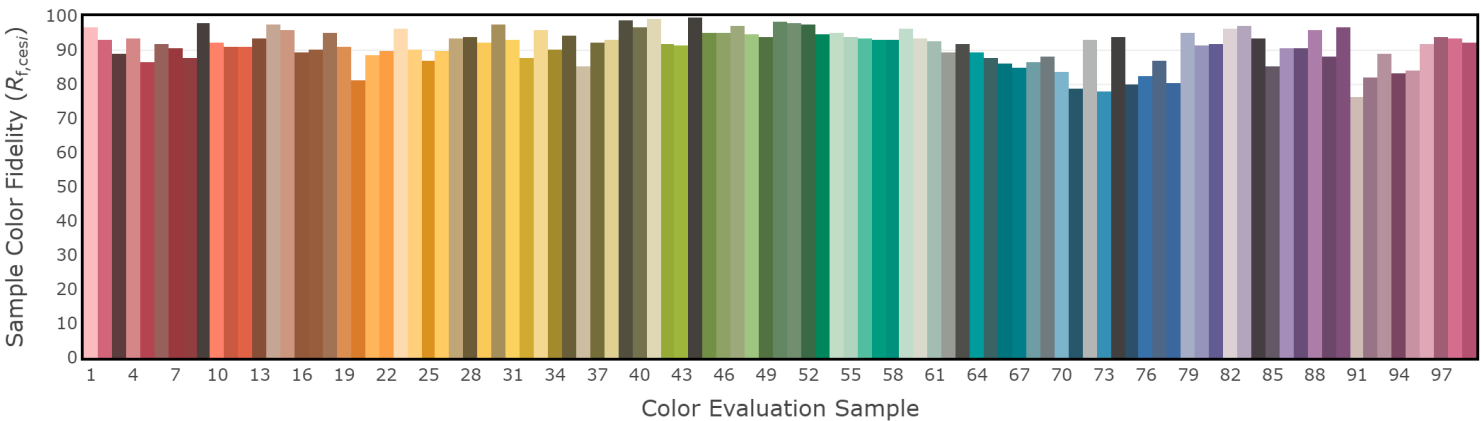
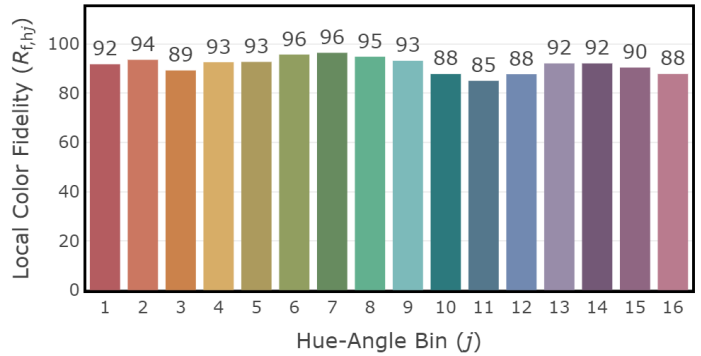
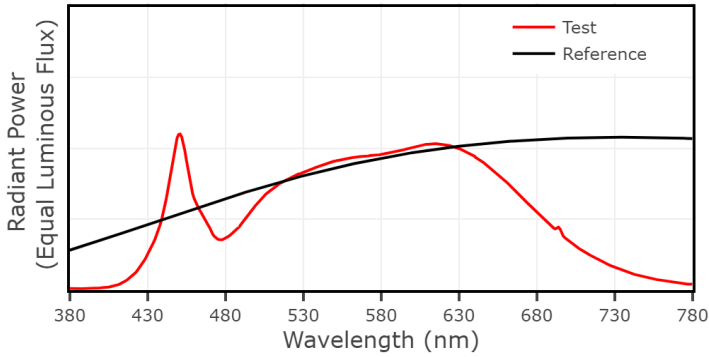
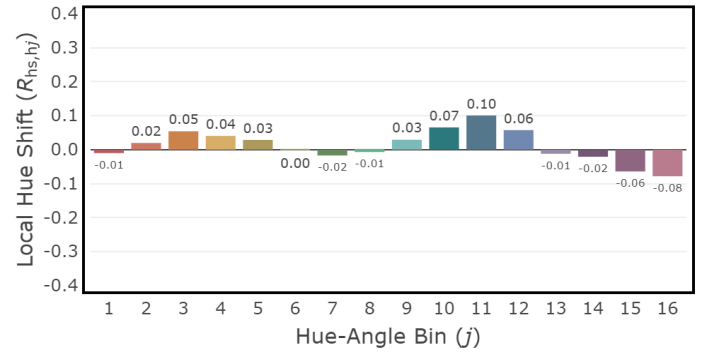
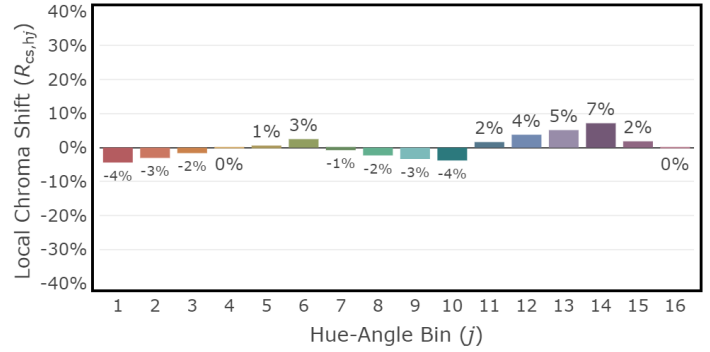
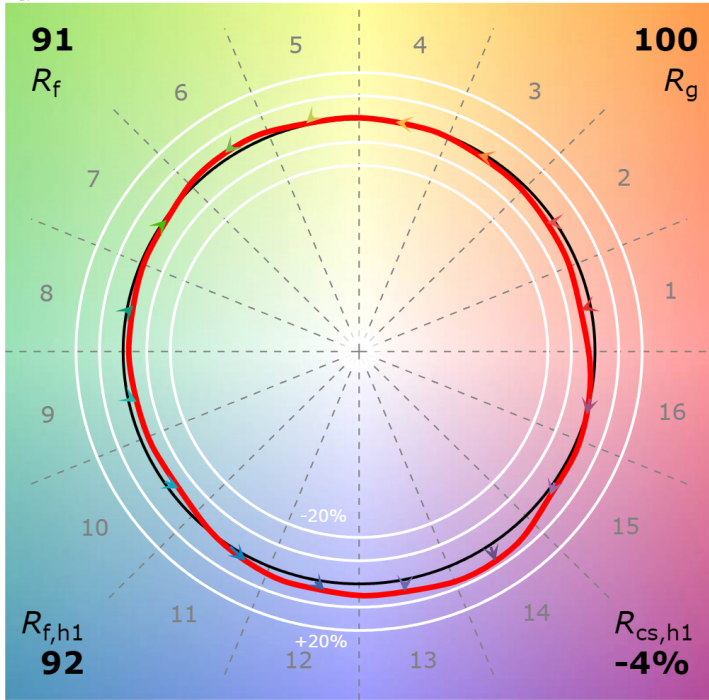
P2 V- F2



3" Cylinder 4000K, 750-1250 lm

CCT: 3944 K
 D_{uv} : 0.0008

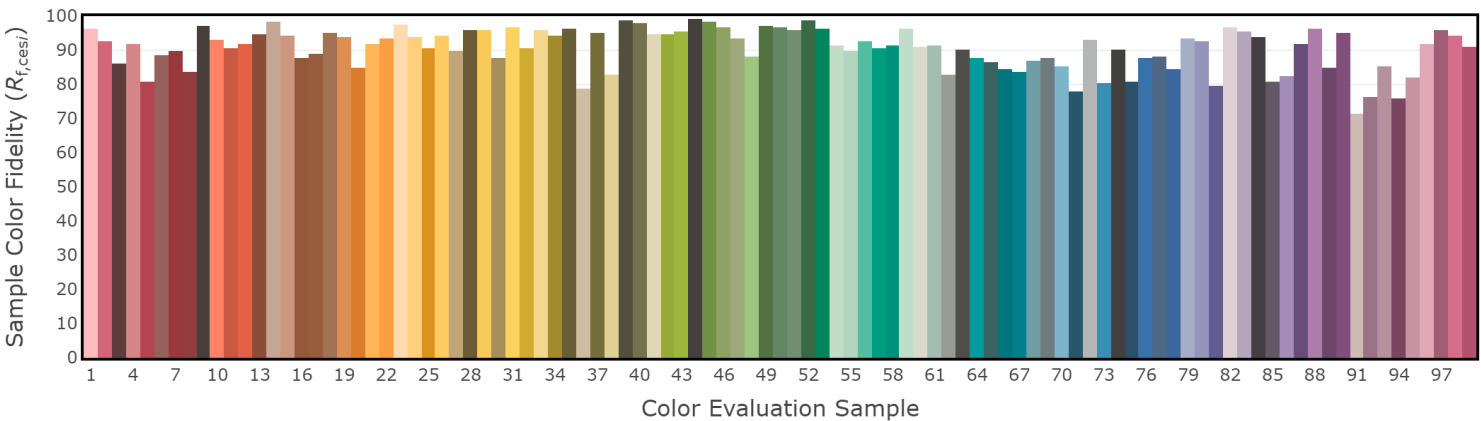
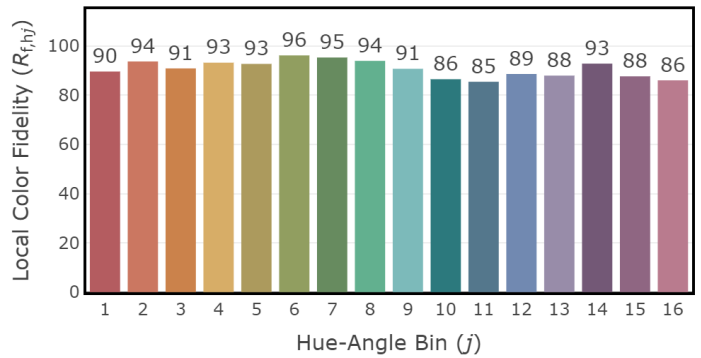
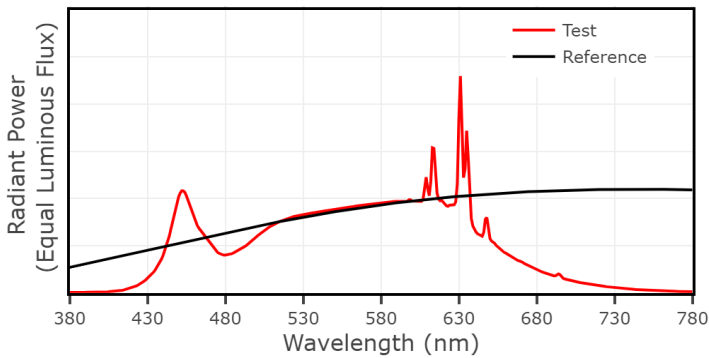
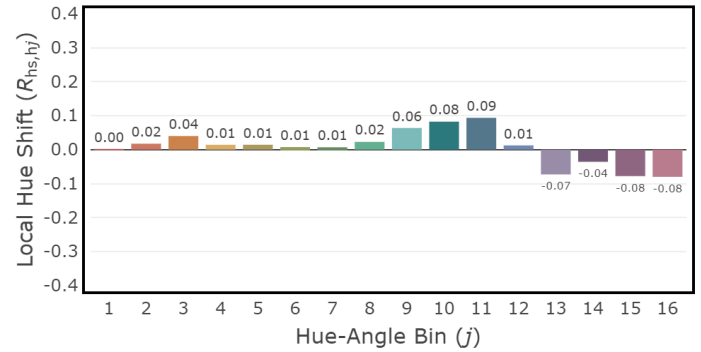
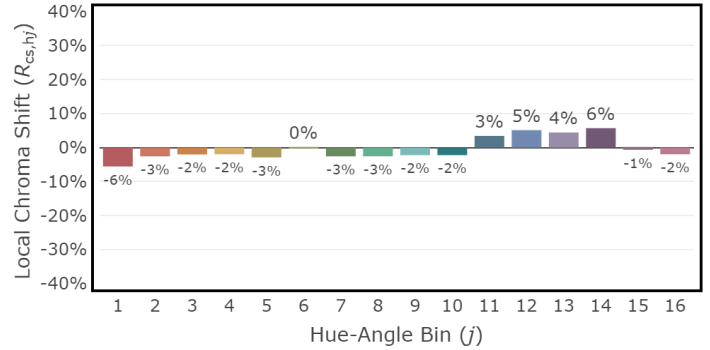
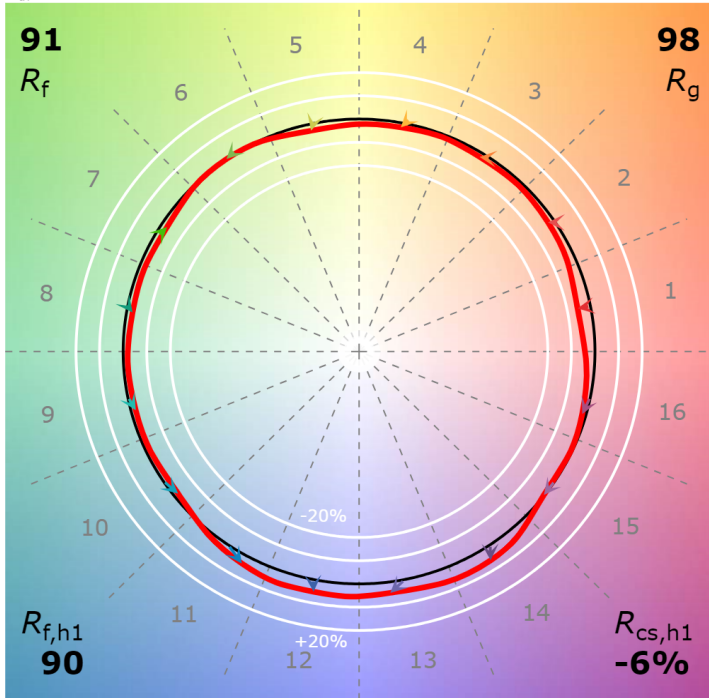
P2 V- F2



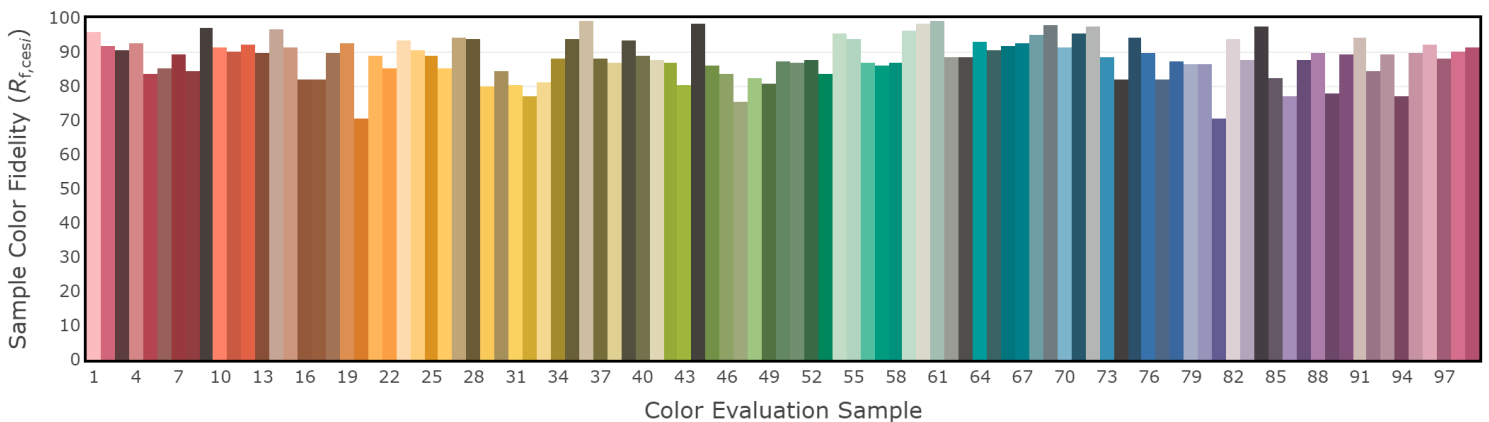
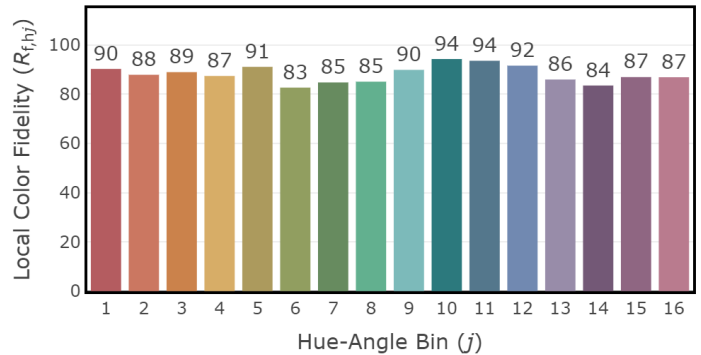
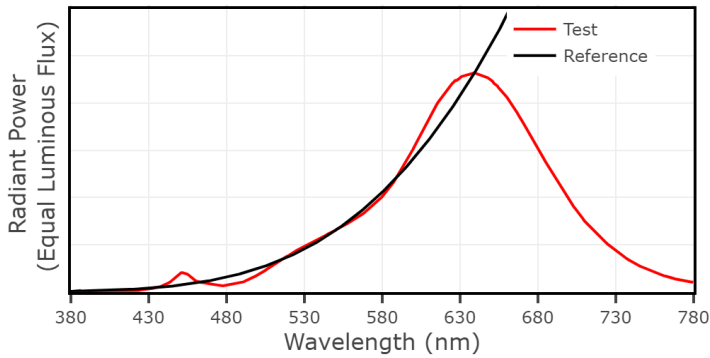
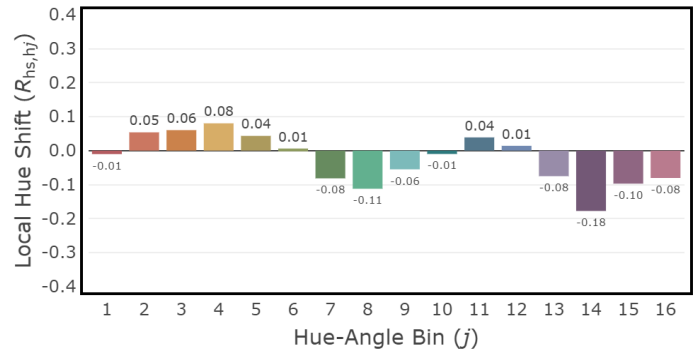
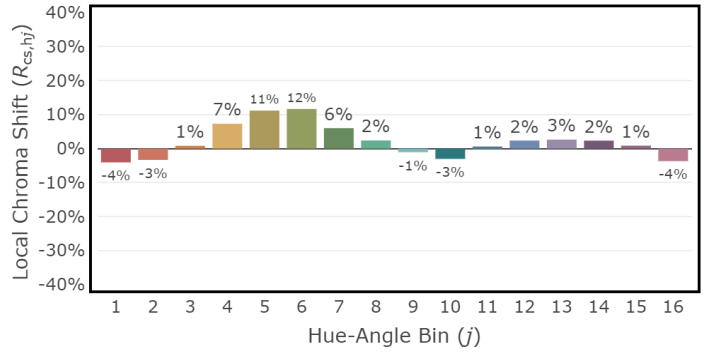
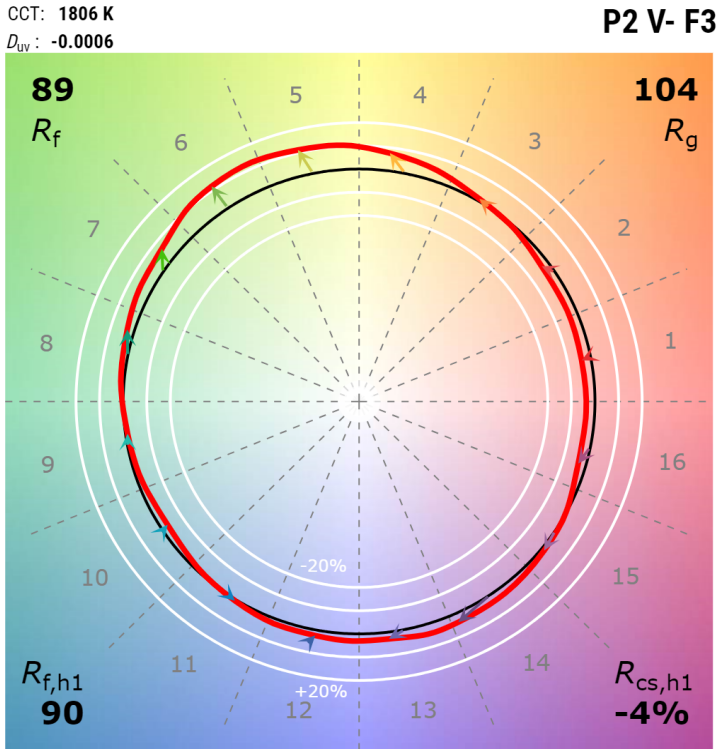
3" Cylinder 4000K, 1500 lm

CCT: 3899 K
 D_{uv} : 0.0010

P2 V- F2



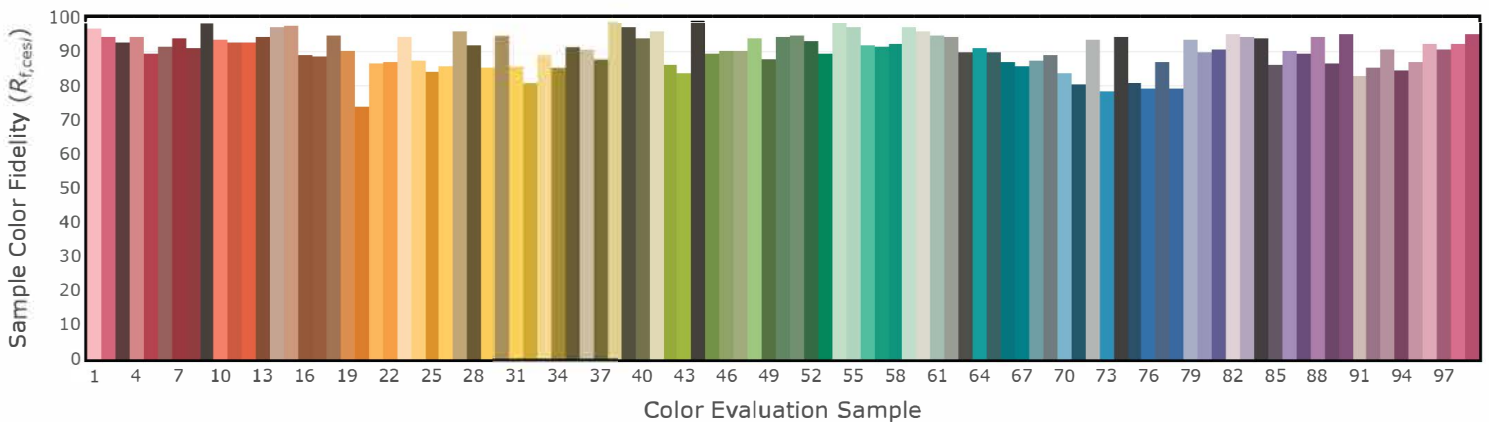
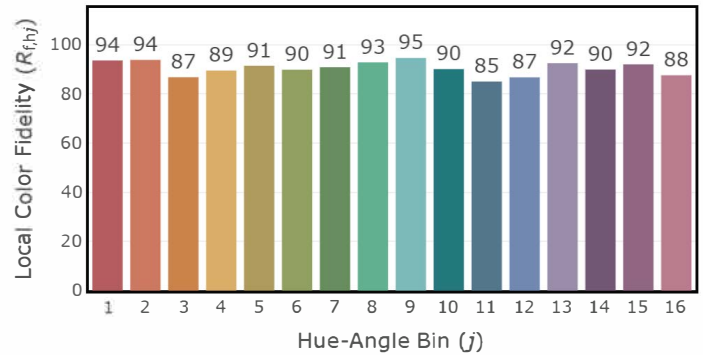
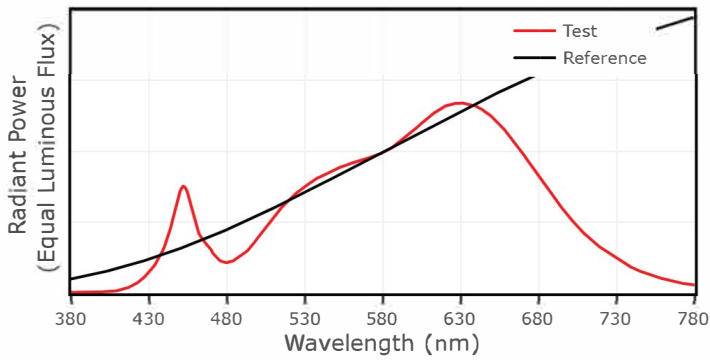
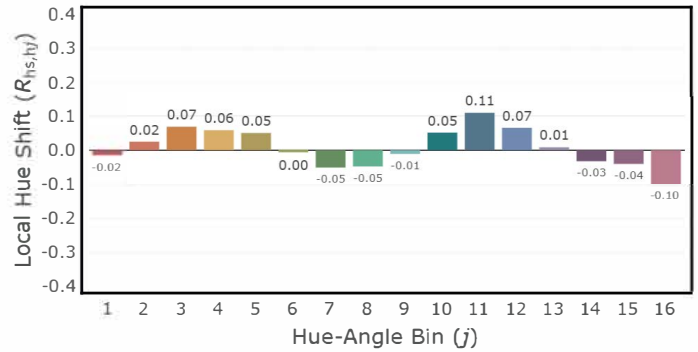
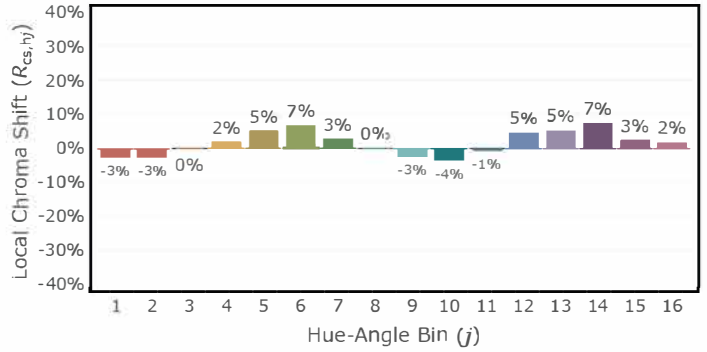
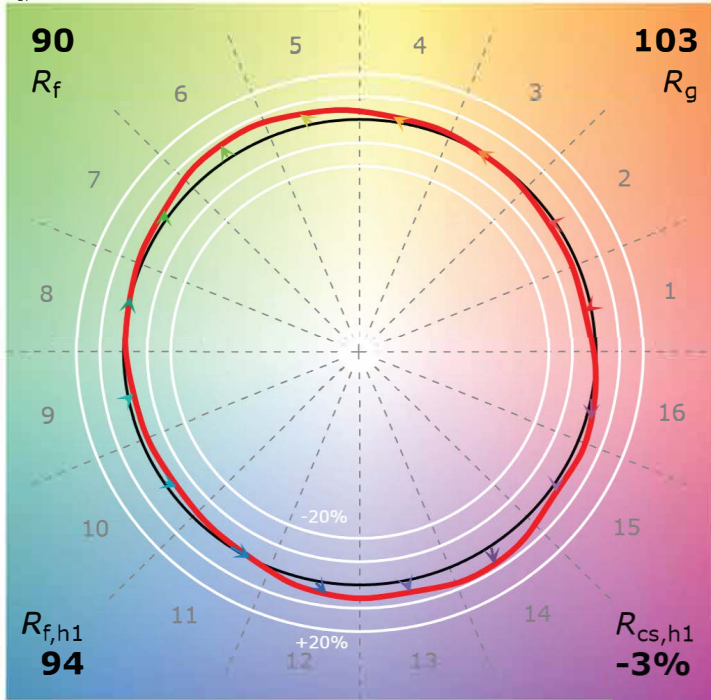
3" Cylinder - Warm Dim 1800K, 43 lm



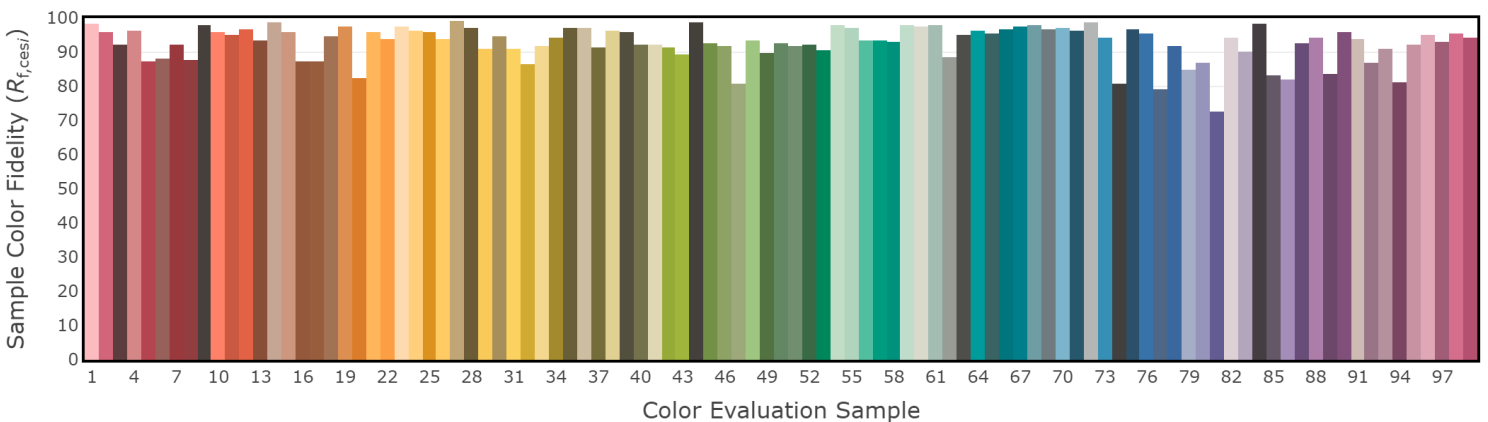
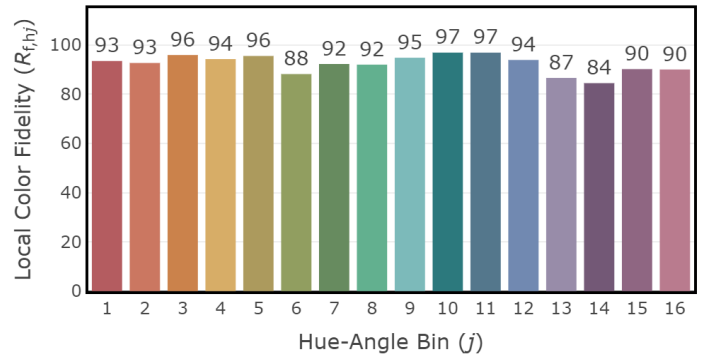
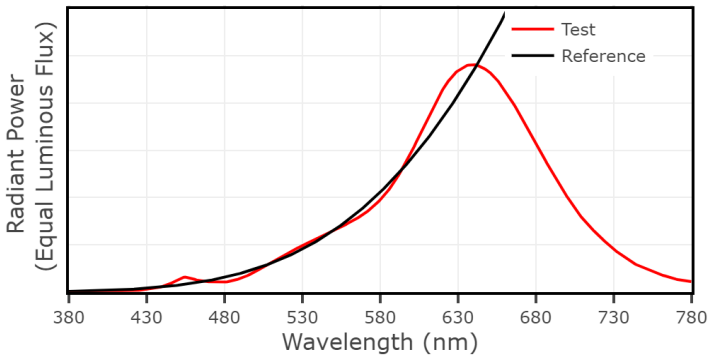
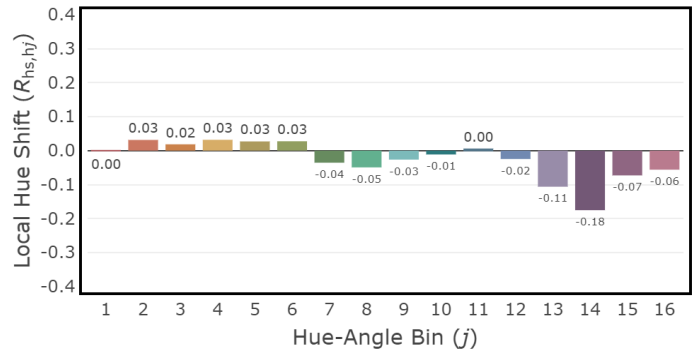
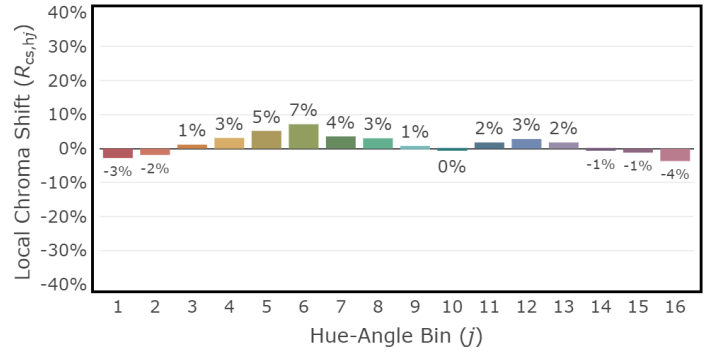
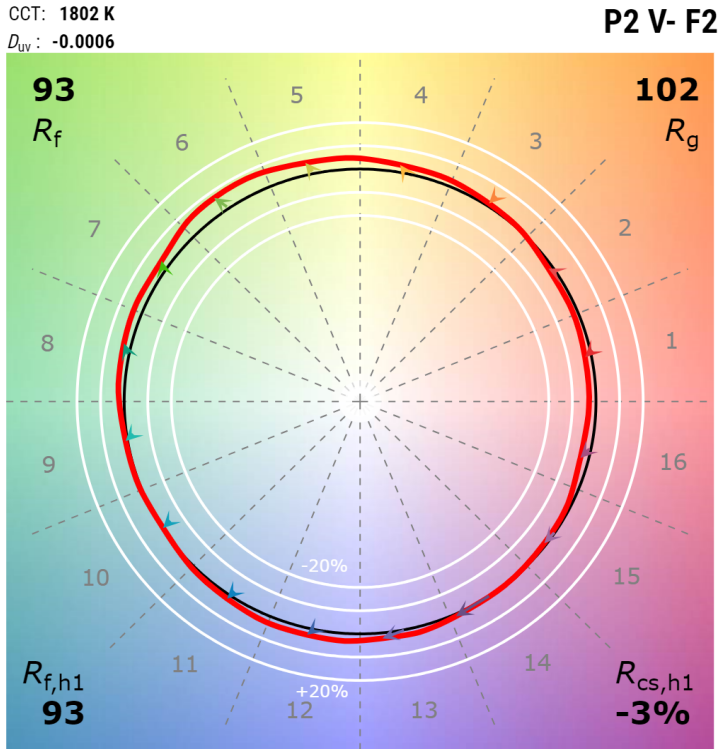
3" Cylinder - Warm Dim 3000K, 1000 lm

CCT: 2958 K
 D_{uv} : -0.0019

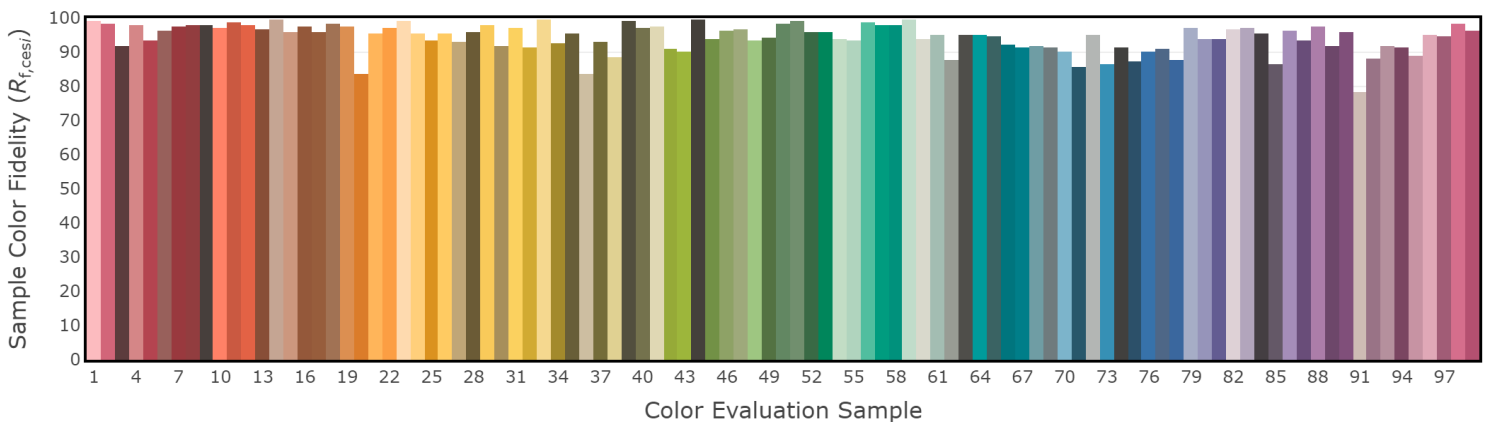
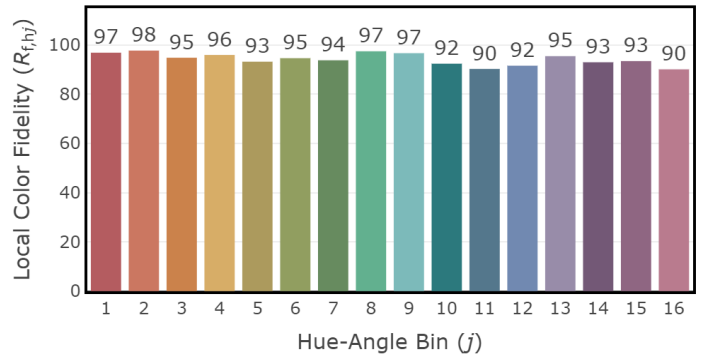
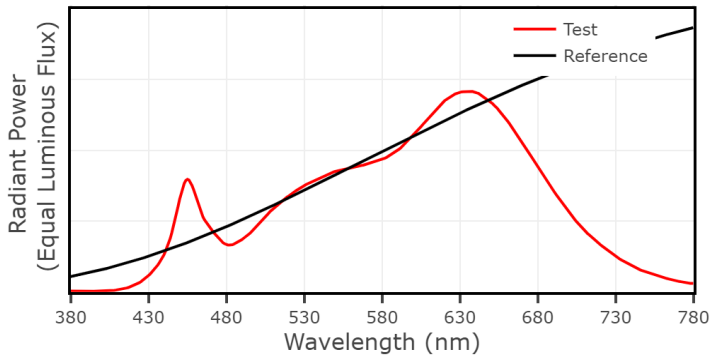
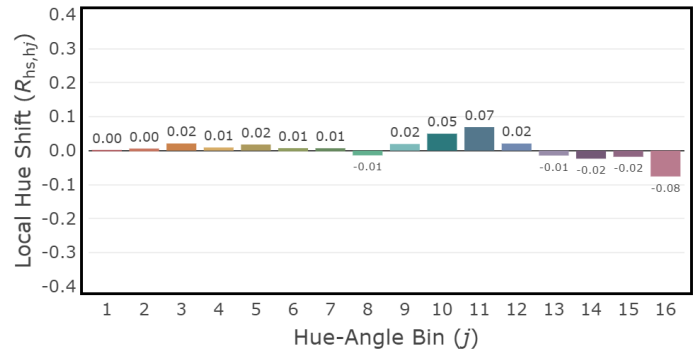
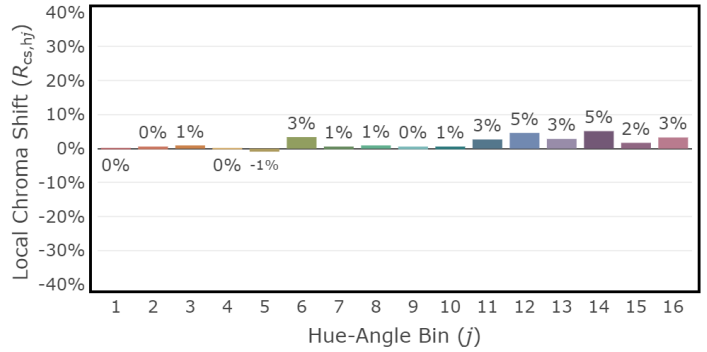
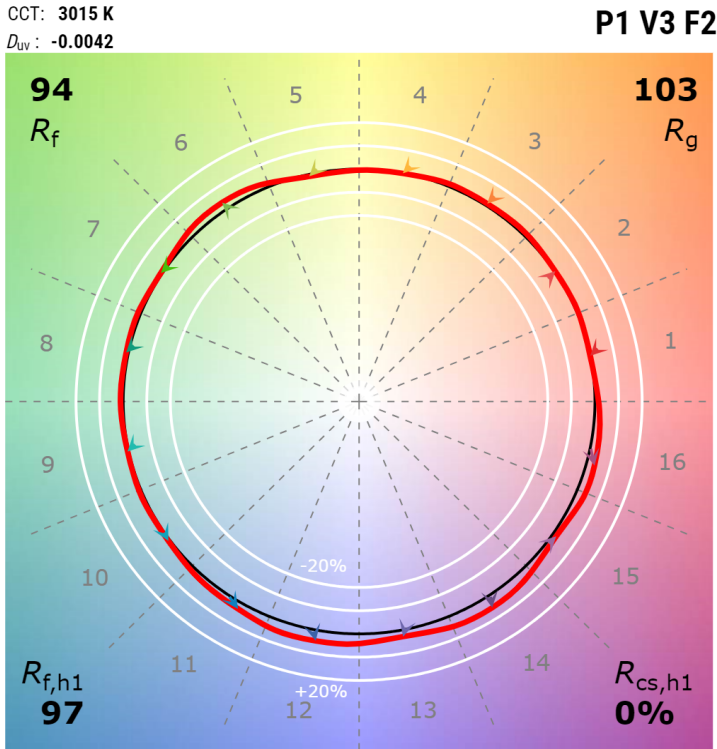
P2 V- F2



3" Cylinder - T1 Tunable White 1800K, 1000 lm



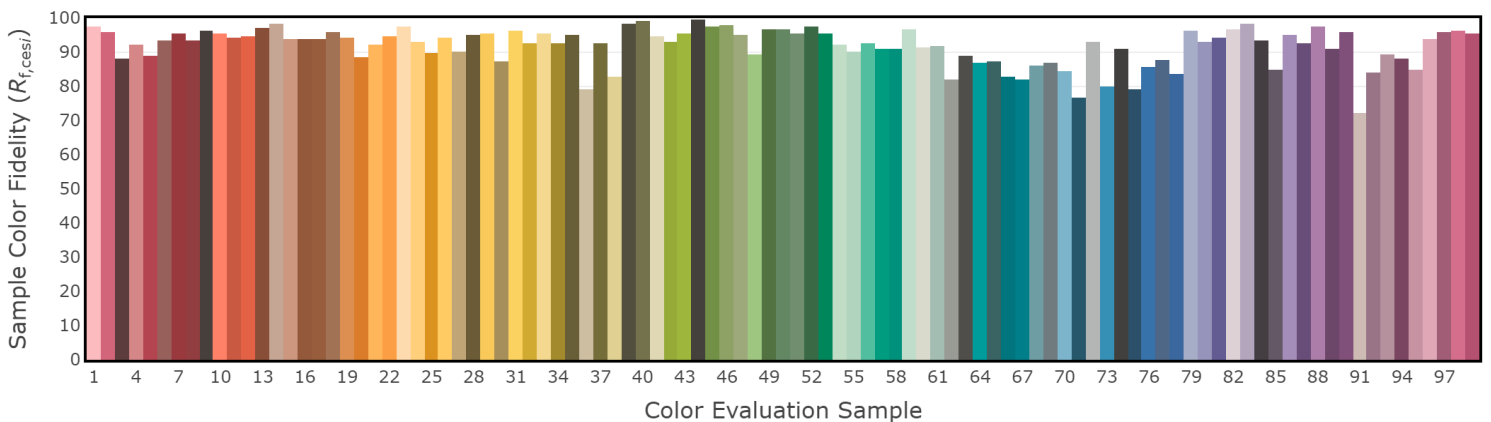
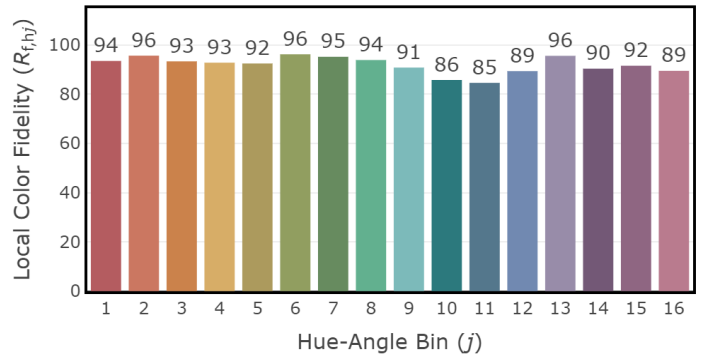
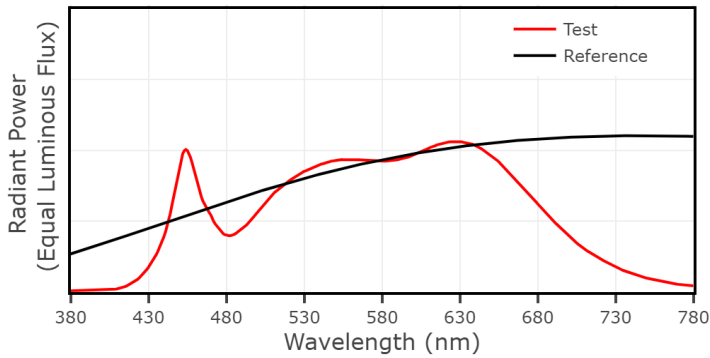
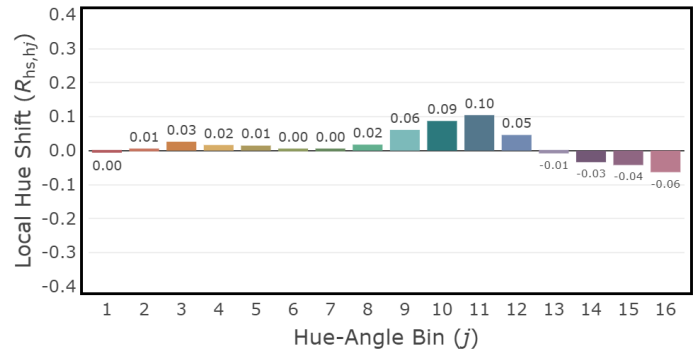
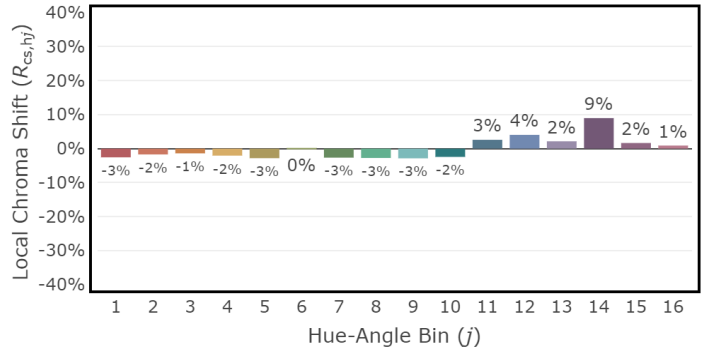
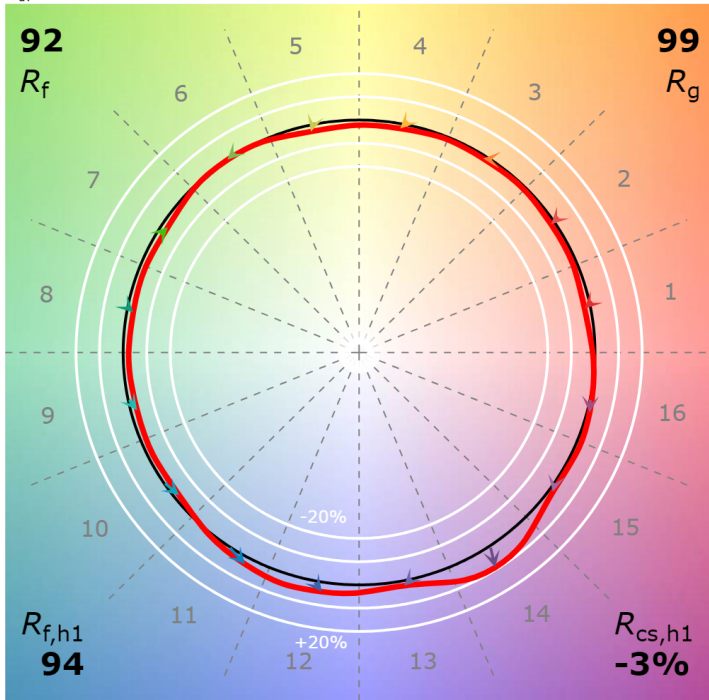
3" Cylinder - T1 Tunable White 3000K, 1000 lm



3" Cylinder - T1 Tunable White 4000K, 1000 lm

CCT: 3888 K
 D_{uv} : 0.0020

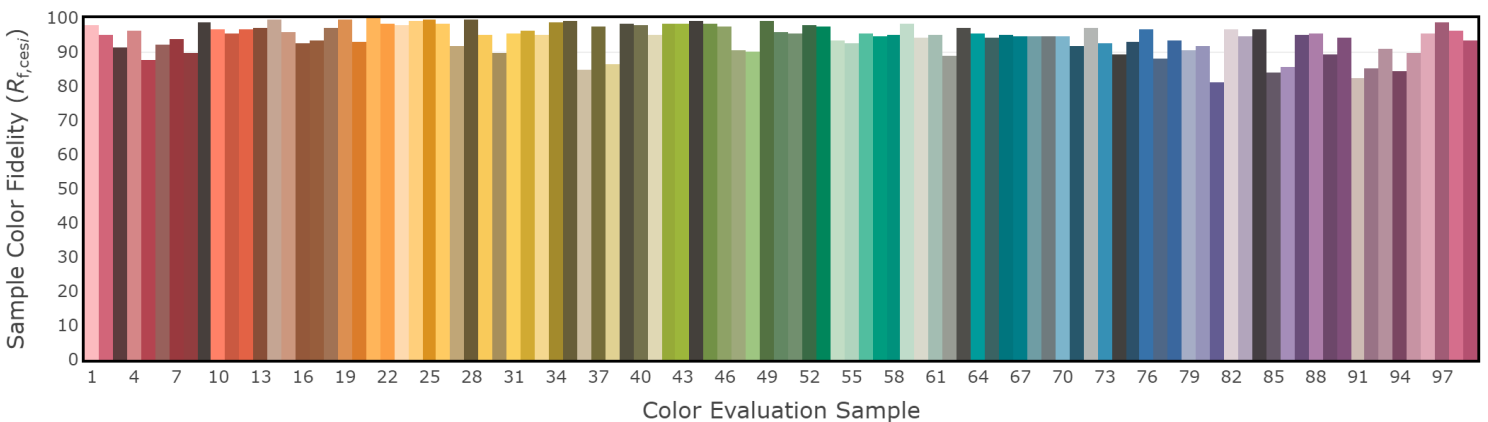
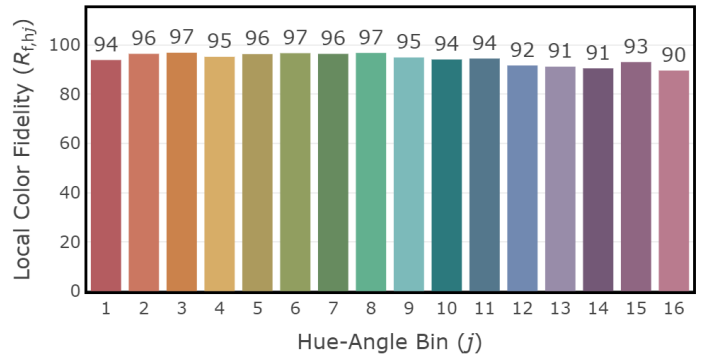
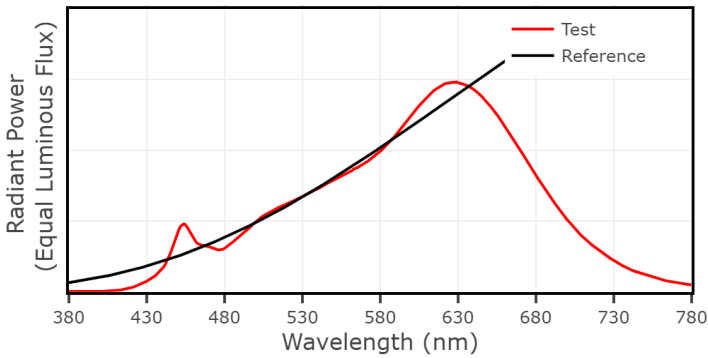
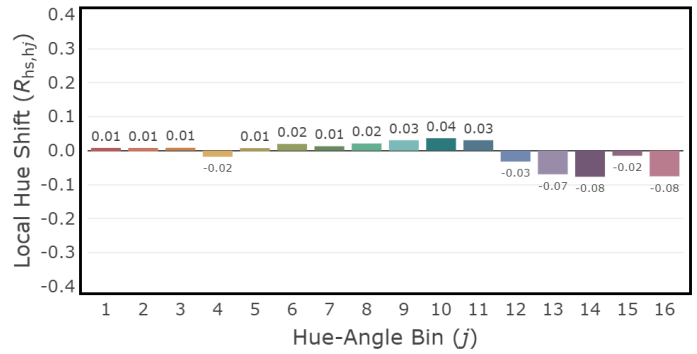
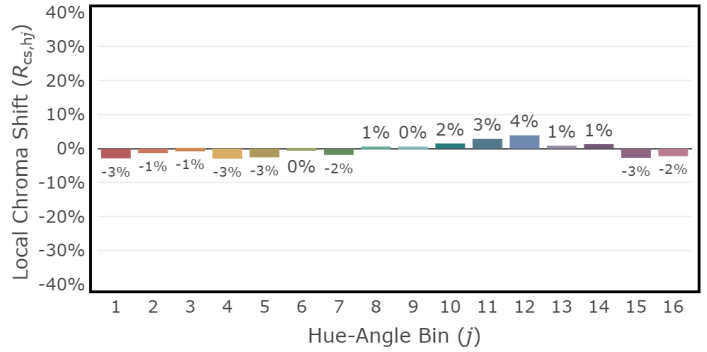
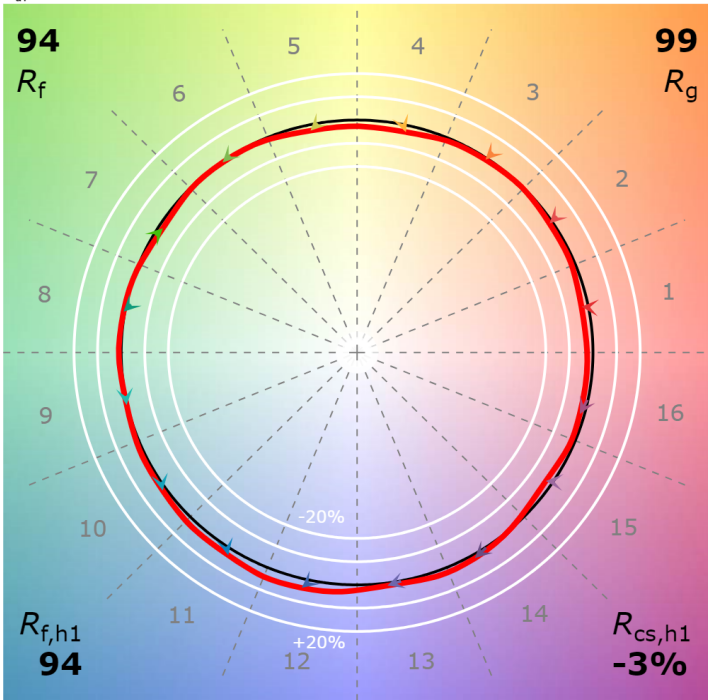
P2 V- F2



3" Cylinder - T2 Tunable White 2700K, 1000 lm

CCT: 2690 K
 D_{uv} : -0.0000

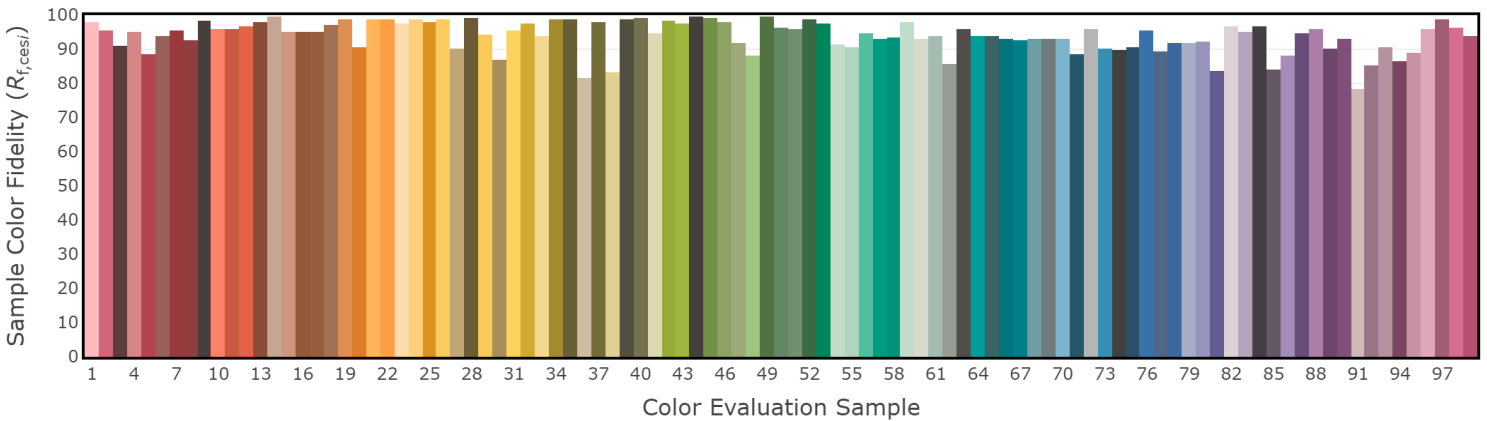
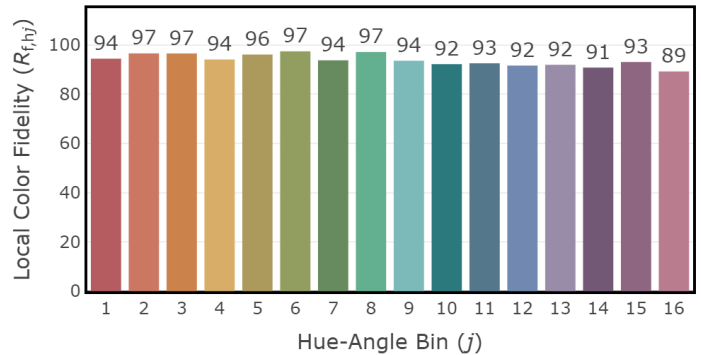
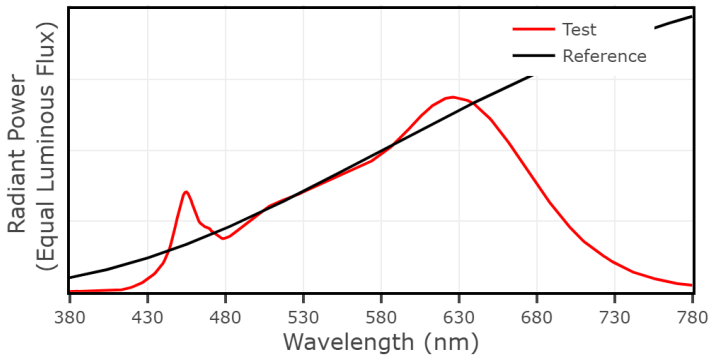
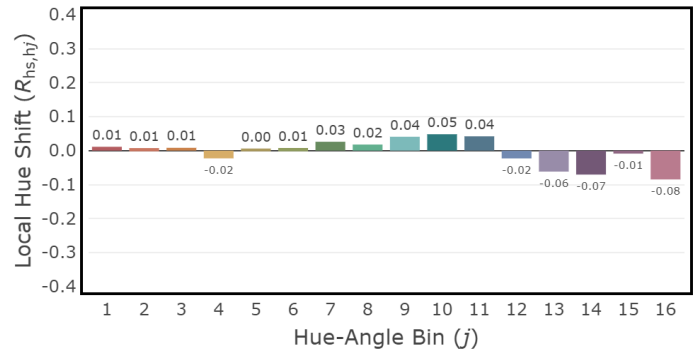
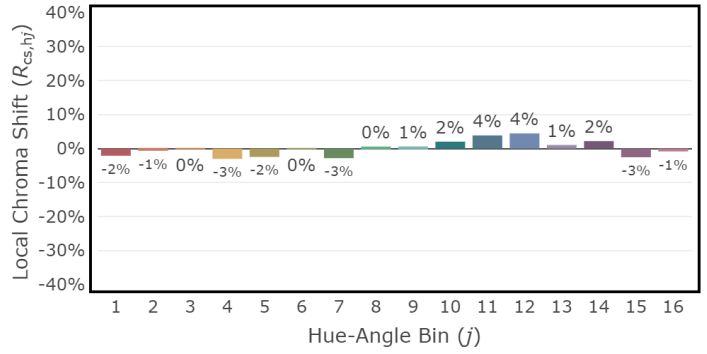
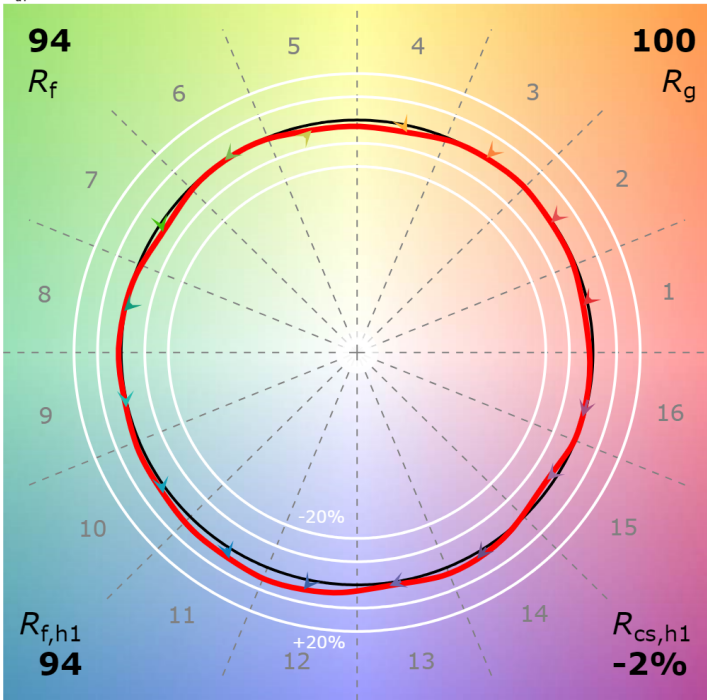
P2 V- F2



3" Cylinder - T2 Tunable White 3000K, 1000 lm

CCT: 2961 K
 D_{uv} : -0.0024

P2 V- F2



3" Cylinder - T2 Tunable White 6500K, 1000 lm

CCT: 6213 K
 D_{uv} : 0.0038

P2 V- F2

