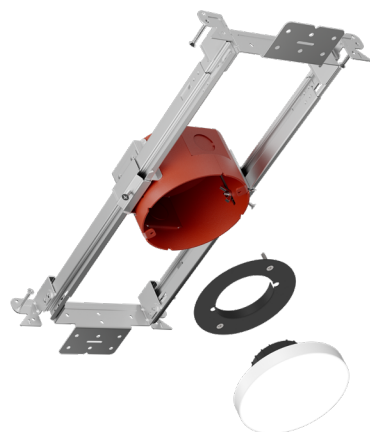


S Series



Project:	Type:
Product Code:	Date:

V122425

4" Surface Mount Downlight

F4NC 4" New Construction

Fire Rated/Fan Rated Shallow Junction Box

- Thinnest-in-class S Series delivers the pure, smooth light and the elegant look of a high-end recessed downlight
- Features multiple ratings to meet the demands of a wide range of situations
- The 4" Round and Square lights match the appearance of recessed lights

INSTALLATION

Ceiling Thickness

SurfaceFrame: 0" up to 1 1/2"

SurfaceFrame (Emergency): 1/2" up to 1 1/4"

Ceiling Material

Drywall

PHYSICAL

Housing

4" Round Junction Box

Application

New Construction

Shape

Round, Square

Finish

White

LIGHT OUTPUT & DISTRIBUTION

Module

Downlight

Lumens (Power)

750 lm (9.5W), 1000 lm (13.0W)

Color Quality

90+ CRI, <3-step SDCM

Color Temperature

2700K 3000K 3500K

Optics



General

POWER & CONTROLS

Input Voltage

120V only (TRIAC/ELV), 120/277V (0-10V)

Dimming

TRIAC/ELV (5%), 0-10V (1%)

Emergency Lighting

Optional Emergency LED Driver with integrated Test Switch for lighting up to 90 minutes in event of power failure

RATINGS & CERTIFICATIONS

Housing

IC (Insulation Contact) Rated

ASTM E283 Certified Air Tight

Code compliant for use in fire-rated assemblies up to a maximum of 2-hours

STC/IIC Sound Rated

RoHS Compliant

Fan Rated up to 35lbs

Module

UL Listed for Wet Location
(Under covered locations only)

UL Closet Rating Compliant
(750 lm only)

Additional Options

Non-Conductive Dead Front

Warranty

5 year limited warranty; 50,000 hours

MAINTENANCE

Driver fully embedded within the module for replacement at the ceiling plane



Declare.



**DMF LightSpeed**Our Quickest Shipping Selections are Highlighted for shipping in **2 days or less***All other items qty 100 or less ship in 5 days or less (custom color & premium metalized finishes excluded)***S Series****4" Surface Mount Downlight****PRODUCT BUILDER - TRIAC/ELV, 0-10V****HOUSING**

F4NC	4" New Construction Fire Rated/Fan Rated Shallow Junction Box
-------------	---

MODULE**EXAMPLE: DRD5S4R07927T**

PRODUCT CODE		APERTURE		SHAPE		LUMENS		CRI		CCT		DRIVER	
DRD5S		4						9					
DRD5S	Module	4	4" Aperture	R	Round	07	750 lm	9	90+ CRI	27	2700K	T	Integrated TRIAC/ELV, 120V only
				S	Square	10	1000 lm			30	3000K	O	Integrated 0-10V, 120/277V
										35	3500K	TDF	Integrated TRIAC/ELV, 120V only, Non-Conductive ¹
												ODF	Integrated 0-10V, 120/277V, Non-Conductive ¹

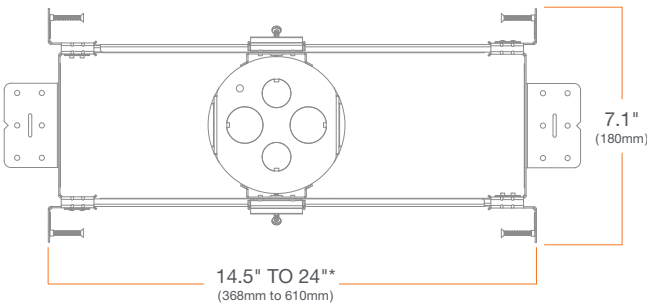
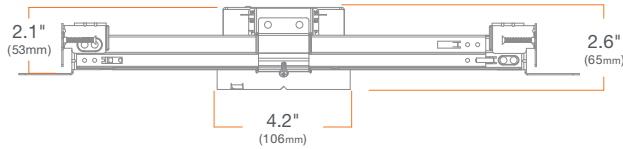
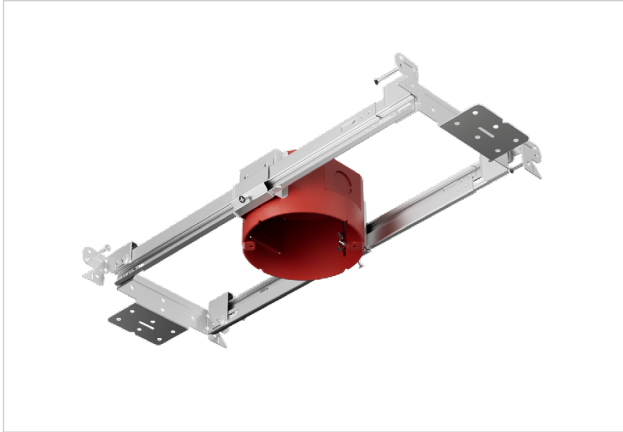
¹ Only available for Round shape, 750 lm, 2700K or 3000K CCT**PRODUCT BUILDER - EMERGENCY LIGHTING****HOUSING****EXAMPLE: F4NC07OEM**

PRODUCT CODE				DRIVER		OPTION	
F4NC						EM	
F4NC	4" New Construction Fire Rated Shallow Junction Box			07O	0-10V, 750 lm	EM	EM Driver
				10O	0-10V, 1000 lm		

MODULE**EXAMPLE: DRD5S4R07927EM**

PRODUCT CODE		APERTURE		SHAPE		LUMENS		CRI		CCT		DRIVER	
DRD5S		4						9				EM	
DRD5S	Module	4	4" Aperture	R	Round	07	750 lm	9	90+ CRI	27	2700K	EM	Emergency with Integrated Test Switch
				S	Square	10	1000 lm			30	3000K		
										35	3500K		

HOUSING



* Can be field cut to minimum 7 1/2" (191mm)

SurfaceFrame

4" New Construction

Fire Rated/Fan Rated Junction Box

F4NC

SUMMARY

JUNCTION BOX: Equipped with (4) 1/2" trade size knockouts (two side, two top) to allow straight conduit runs. Approved for 6 (three in, three out) #12 AWG 70°C through wiring conductors.

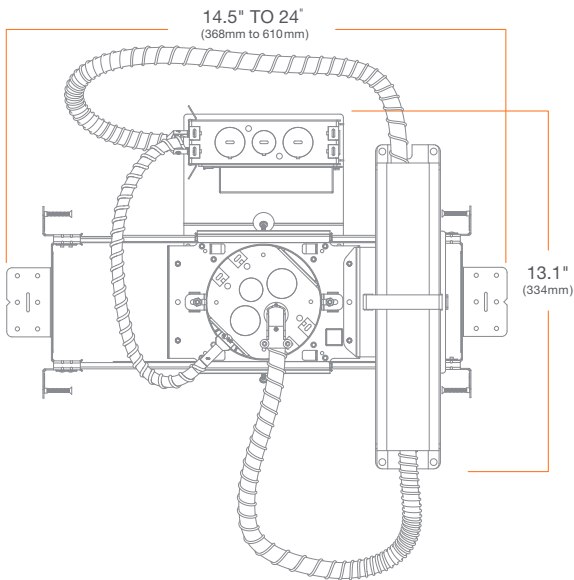
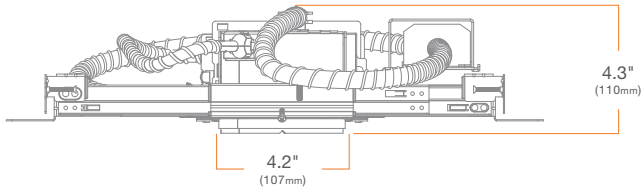
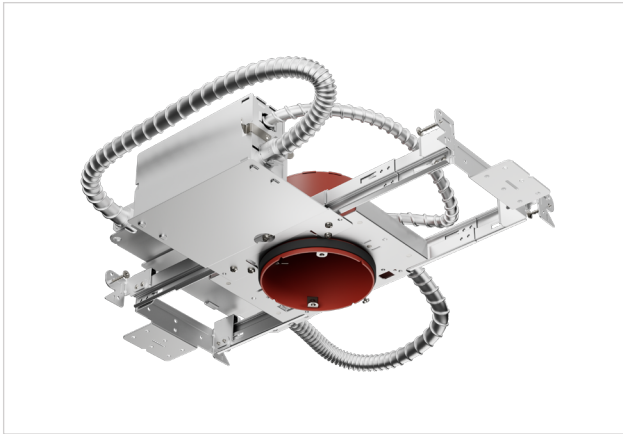
MOUNTING: Pre-installed mounting brackets allow vertical adjustment of bar hangers up to 1"

CEILING: 0 to 1 1/2"

CUTOUT: 4 3/16" (106mm) round opening

LISTINGS: Metallic outlet box certified UL514A, code compliant for use in appropriate fire-rated assemblies for up to 2-hours, STC/IIC Sound Rated, ASTM E283 certified Air Tight, IC (Insulation Contact) rated. Suitable for Use in Air-Handling Space – Complies with UL2043. Fan Rated in the United States for up to 35lbs and 16" spacing only when installed in joist or stud. Must install with all six screws (factory installed).

EMERGENCY HOUSING



* Can be field cut to minimum 9" (229mm)

SurfaceFrame

4" New Construction Fire Rated Junction Box with Emergency Lighting

F4NC07OEM

F4NC10OEM

SUMMARY

JUNCTION BOX: Equipped with (4) 1/2" trade size knockouts (two side, two top) to allow straight conduit runs. Approved for 6 (three in, three out) #12 AWG 70°C through wiring conductors.

MOUNTING: Pre-installed mounting brackets allow vertical adjustment of bar hangers up to 1"

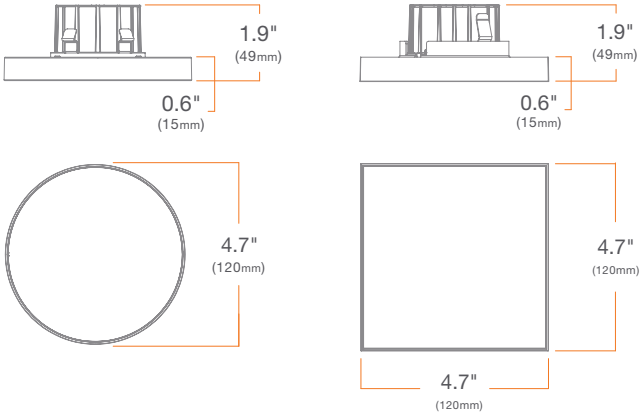
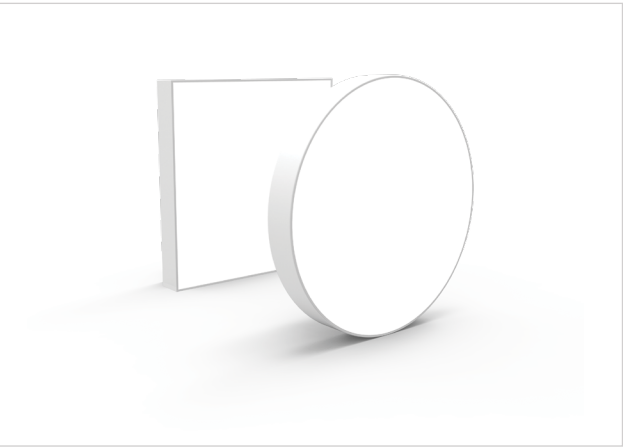
CEILING: 1/2" up to 1 1/4"

CUTOUT: 4 3/16" (106mm) round opening

LISTINGS: Metallic outlet box certified UL514A, code compliant for use in appropriate fire-rated assemblies for up to 2-hours, STC/IIC Sound Rated, ASTM E283 certified Air Tight, IC (Insulation Contact) rated. Suitable for Use in Air-Handling Space – Complies with UL2043



MODULE



PERFORMANCE SUMMARY

	STATIC CCT
CCT	2700K, 3000K, 3500K
LUMENS (POWER)	750 lm (9.5W), 1000 lm (13W)
COLOR QUALITY	90+ CRI, less than 3-step SDCM
DIMMING ¹	Down to less than 5% for TRIAC/ELV at 120V, 1% for 0-10V at 120/277V
LED CHIP	Bridgelux
LISTINGS	ENERGY STAR® Qualified ² , California Title 24 2016-2022 JA8-E Compliant, UL Listed for Under Covered Locations, UL Closet Rating (750lm ONLY, Complies with NEC Section 410.16.A3 and C5), UL Certified US-CA

¹ Visit rb.gy/8xj3e to learn more
² Refer to ENERGY STAR Certified light fixtures database

ADDITIONAL

INPUT VOLTAGE: 120V only (TRIAC/ELV), 120/277V (0-10V)
MAX INPUT CURRENT (120V): 0.075 amps, 0.1047 amps
MAX INPUT CURRENT (277V): 0.034 amps, 0.047 amps

EMERGENCY LIGHTING: Optional Emergency LED Driver with Integrated Test Switch for lighting up to 90 minutes in event of power failure

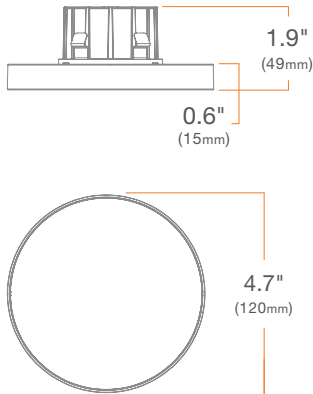
PHOTOMETRIC TESTING: Tested in accordance to IESNA LM-79-2008

POWER FACTOR: Greater than 0.9
TOTAL HARMONIC DISTORTION: Less than 20%
AMBIENT OPERATING TEMPERATURE: -20°C to 40°C
WARRANTY: 5 year limited warranty; 50,000 hours at 70% lumen maintenance

MODULE

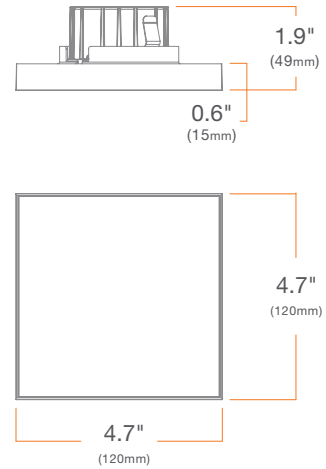
4" Round

DRD5S4R



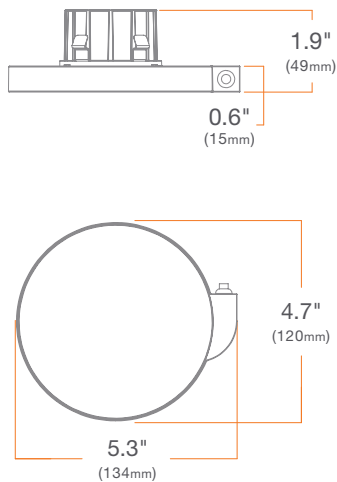
4" Square

DRD5S4S



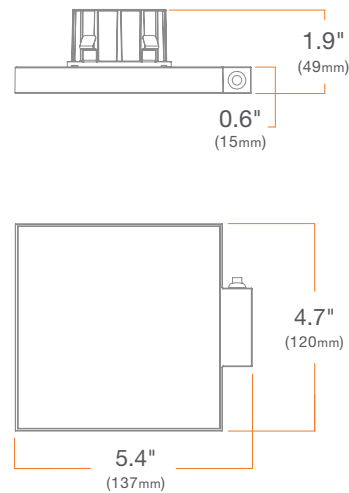
4" Round with EM Test Switch

DRD5S4R EM



4" Square with EM Test Switch

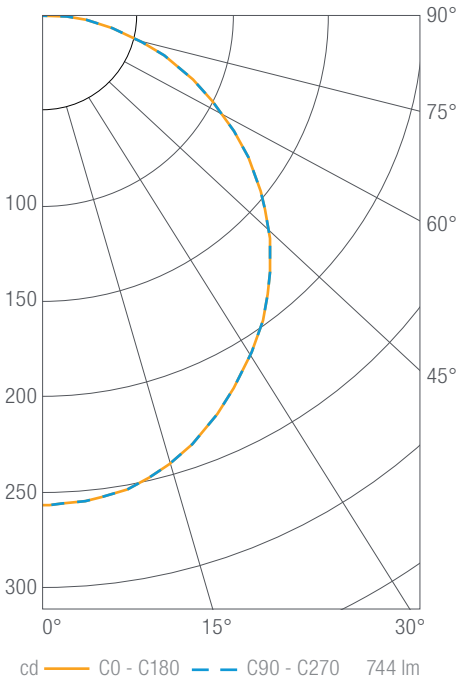
DRD5S4S EM



PHOTOMETRY

DRD5S 4" Round, 750 lm, 90+ CRI, 3000K

DRD5S4R07930



Luminous Intensity

Gamma	C 0°
0°	258
5°	256
10°	253
15°	247
20°	237
25°	226
30°	213
35°	200
40°	185
45°	169
50°	151
55°	132
60°	113
65°	93
70°	73
75°	54
80°	35
85°	18
90°	6

Values in candela

Zonal Lumen Summary

Zone	Lumens	Luminaire %
0-30	199	27
0-40	324	44
0-60	573	77
0-90	744	100
0-180	744	100

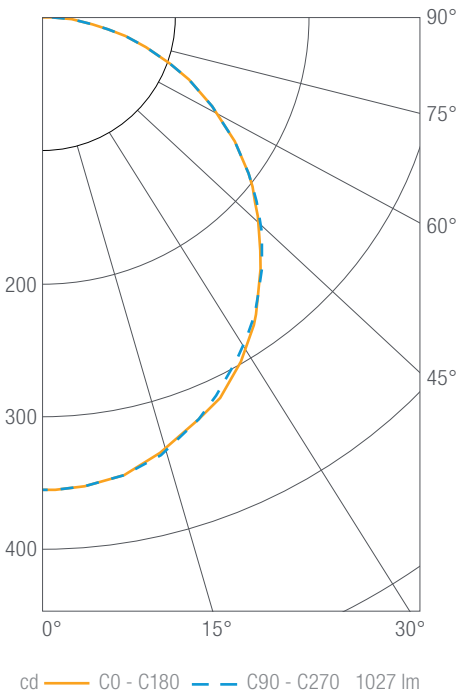
Illuminance Chart

Distance from LED	Foot Candles	Diameter
3.0'	29	8.8'
6.0'	7	17.7'
9.0'	3	26.5'
12.0'	2	35.3'

Beam Angle: 112°

DRD5S 4" Round, 1000 lm, 90+ CRI, 3000K

DRD5S4R10930



Luminous Intensity

Gamma	C 0°
0°	356
5°	354
10°	349
15°	340
20°	327
25°	312
30°	294
35°	276
40°	255
45°	233
50°	209
55°	183
60°	155
65°	128
70°	101
75°	74
80°	48
85°	25
90°	9

Values in candela

Zonal Lumen Summary

Zone	Lumens	Luminaire %
0-30	274	27
0-40	447	44
0-60	790	77
0-90	1027	100
0-180	1027	100

Illuminance Chart

Distance from LED	Foot Candles	Diameter
3.0'	40	8.8'
6.0'	10	17.7'
9.0'	4	26.5'
12.0'	2	35.3'

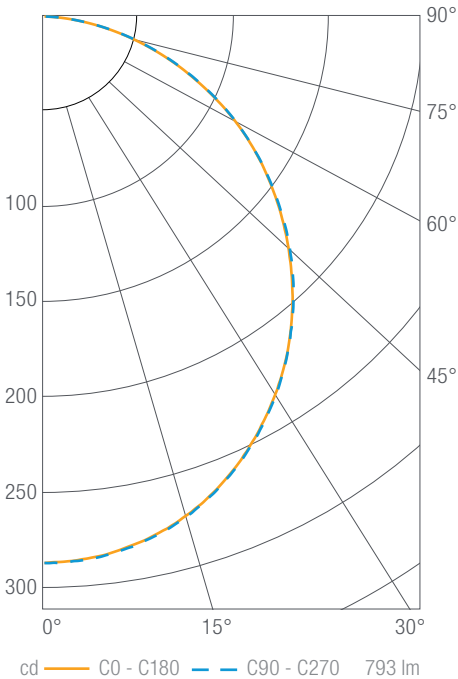
Beam Angle: 112°



PHOTOMETRY

DRD5S 4" Square, 750 lm, 90+ CRI, 3000K

DRD5S4S07930



Luminous Intensity	
Gamma	C 0°
0°	287
5°	285
10°	281
15°	274
20°	264
25°	252
30°	237
35°	221
40°	202
45°	183
50°	162
55°	141
60°	120
65°	97
70°	74
75°	51
80°	30
85°	11
90°	0

Values in candela

Zonal Lumen Summary

Zone	Lumens	Luminaire %
0-30	221	28
0-40	359	45
0-60	628	79
0-90	793	100
0-180	793	100

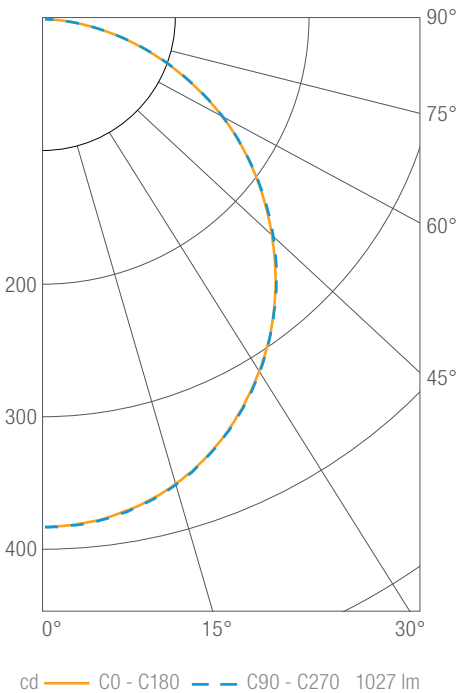
Illuminance Chart

Distance from LED	Foot Candles	Diameter
3.0'	32	8.4'
6.0'	8	16.8'
9.0'	3.5	25.2'
12.0'	2	33.7'

Beam Angle: 109°

DRD5S 4" Square, 1000 lm, 90+ CRI, 3000K

DRD5S4S10930



Luminous Intensity	
Gamma	C 0°
0°	384
5°	382
10°	376
15°	367
20°	354
25°	337
30°	317
35°	296
40°	271
45°	245
50°	217
55°	189
60°	161
65°	130
70°	99
75°	69
80°	40
85°	15
90°	0

Values in candela

Zonal Lumen Summary

Zone	Lumens	Luminaire %
0-30	296	28
0-40	481	45
0-60	841	79
0-90	1062	100
0-180	1062	100

Illuminance Chart

Distance from LED	Foot Candles	Diameter
3.0'	43	8.4'
6.0'	10.7	16.8'
9.0'	4.7	25.2'
12.0'	2.7	33.7'

Beam Angle: 109°