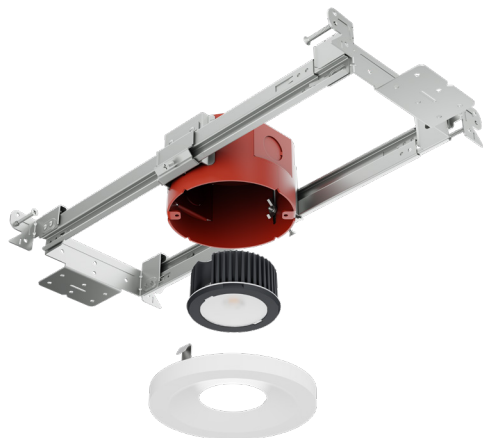


# H Series

## F4NC

4" Fire Rated Housing



V110223

**Trusted Performance** Brilliant illumination and reliable performance for your entire home

**Brightness Switch** Easily select ambient, general, or higher-ceiling illumination with the flip of a switch

**True to Life Colors** Accurate color rendering means people and home finishes look great

**Natural Warm Dim** Comfortable white light for accurate illumination at full brightness that transitions to a relaxing sunset effect at lower dimming levels

### INSTALLATION

#### Installation Type

New Construction with Bar Hangers

#### Ceiling Material

Drywall

#### Ceiling Thickness

1/2" - 1 1/2"

### TRIMS

#### Aperture

4"

#### Style

Flush

#### Finish

White, Black (Coming Soon)

### LIGHT OUTPUT & DISTRIBUTION

#### Module

Downlight

#### Lumens (Power)

Integrated Brightness Switch  
350 lm (5W), 750 lm (9W), 950lm (12W)

#### Color Quality

90+ CRI, 3-step SDCM

#### Color Temperature

- Natural Warm Dim (3000K-2200K)
- Natural Warm Dim (2700K-1800K)

#### Beam Spread

△ Flood (40°)

#### Warranty

5 year limited warranty; 50,000 hours

### ELECTRICAL & CONTROLS

#### Input Voltage

120V

#### Dimming

TRIAC/ELV (5%)

### RATINGS

- Type IC (Insulation Contact)
- Air Tight
- STC/IIC Sound Rated
- Fire Rated
- Suitable for Wet Locations
- NSF Listed





PRODUCT BUILDER

HOUSING

F4NC	4" Fire Rated New Construction Housing
------	--

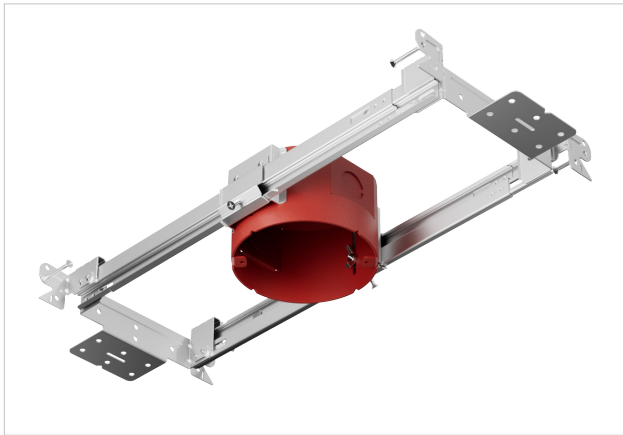
LIGHT MODULE

PRODUCT CODE	
<div></div>	
HM3C	H Series Module with Natural Warm Dim (3000K-2200K)
HM2C	H Series Module with Natural Warm Dim (2700K-1800K)

TRIM

PRODUCT CODE		FINISH	
<div>H4TRF</div>		<div></div>	
H4TRF	4" Round Flush Trim	WH	White
		BK	Black <i>(Coming Soon)</i>

## HOUSING



## 4" Fire Rated New Construction Housing

**F4NC**

### SUMMARY

**JUNCTION BOX:** Equipped with (4)  $\frac{1}{2}$ " trade size knockouts (two side, two top) to allow straight conduit runs. Approved for 6 (three in, three out) #12 AWG 70°C through wiring conductors.

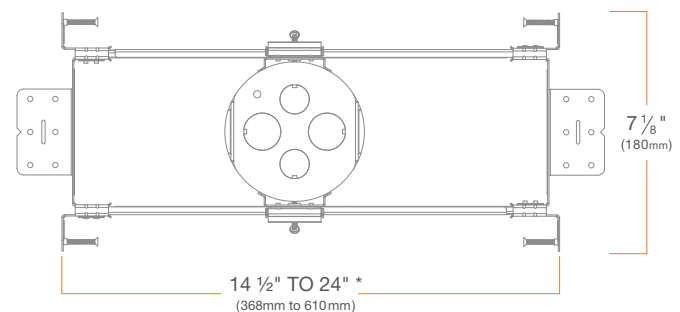
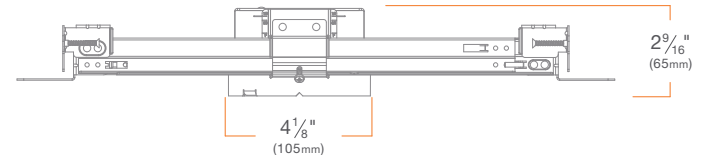
**MOUNTING:** Pre-installed mounting brackets allow vertical adjustment of bar hangers up to 1"

**CEILING:** 0 to 1  $\frac{1}{2}$ "

**CUTOUT:** 4  $\frac{3}{16}$ " (106mm) round opening

**LISTINGS:** Metallic outlet box certified UL514A, code compliant for use in appropriate fire-rated assemblies for up to 2-hours, STC/IIC Sound Rated, ASTM E283 certified Air Tight, IC (Insulation Contact) rated

**WARRANTY:** 5 year limited warranty

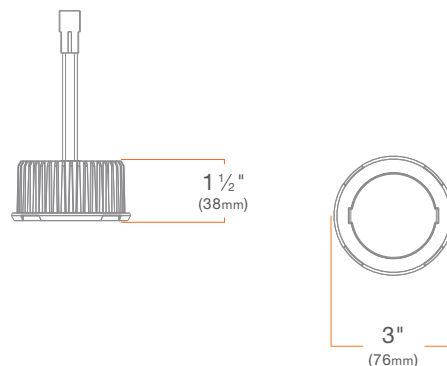


\* Can be field cut to minimum 7  $\frac{1}{2}$ " (191mm)

## MODULE

## H Series Module

HM3C, HM2C



## SUMMARY

## WARM DIM

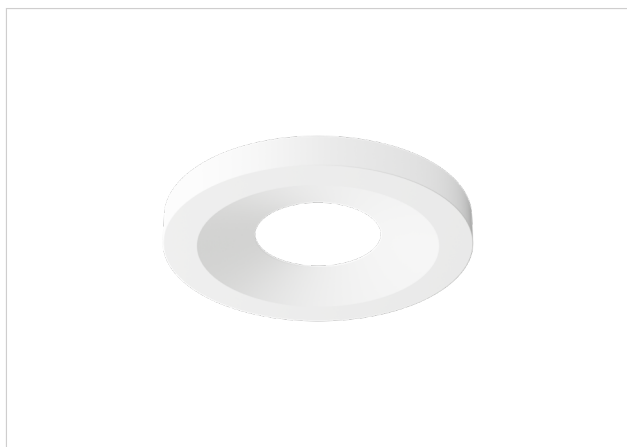
CCT	3000K - 2200K, 2700K - 1800K
LUMENS (POWER)	Brightness Switch 350 lm (5W), 750 lm (9W), 950lm (12W)
EFFICACY	70 lm/W, 83 lm/W, 79 lm/W
COLOR QUALITY	90+ CRI <sup>1</sup> , 3-step SDCM
BEAM SPREAD	Flood (40°)
DIMMING	TRIAC/ELV
LED CHIP	Bridgelux
LISTINGS	ENERGY STAR® Qualified <sup>2</sup> , California Title 24 2016-2022 JA8-E compliant, UL Listed for Wet Location, UL Certified US-CA, Declare, RoHS compliant, NSF/ANSI 2 listed, Suitable for splash-zone <sup>3</sup>

<sup>1</sup> Tested in accordance to IESNA LM-79-2008<sup>2</sup> Refer to ENERGY STAR Certified light fixtures database<sup>3</sup> This product is evaluated in accordance to NSF/ANSI 2 for Splash Zones having designated trim finishes.

## ADDITIONAL

**INPUT VOLTAGE:** 120V, 50/60Hz**MAX INPUT CURRENT (120V):** 0.13 amps**CONNECTOR:** PowerPlug® Luminaire Disconnect Model 182**POWER FACTOR:** Greater than 0.9**TOTAL HARMONIC DISTORTION:** Less than 20%**AMBIENT OPERATING TEMPERATURE:** -20°C to 40°C**WARRANTY:** 5 year limited warranty; 50,000 hours at 70% lumen maintenance

## TRIM



## 4" Round Flush Trim

H4TRFWH, H4TRFBK

### SUMMARY

**CONSTRUCTION:** Die-cast aluminum

**FINISH:** White, Black

