



X Series

Introducing the All-New
2" Aperture Lighting System



Design-forward. Playful. Audacious.

The all-new X Series represents the next evolution of the DMF line, bringing you the industry's best small-aperture downlights. The trim, optics, and aiming options provide the highest quality of light possible. The result is 2" aperture downlight or adjustable solutions offering uncompromised performance, finishes, and serviceability.

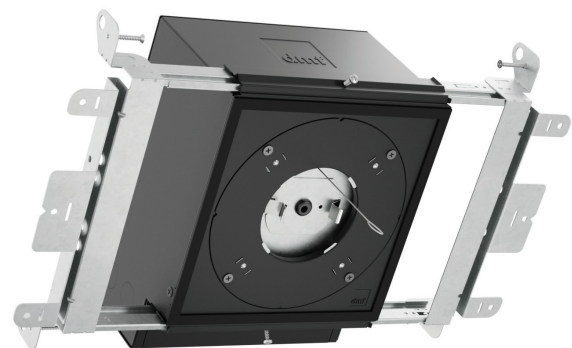
2" Aperture Lighting System

The all-new X Series represents the next evolution of the DMF line, bringing you the industry's best small aperture downlights. The trim, optics, and aiming options provide the highest quality of light possible. The result is a 2" aperture downlight or adjustable solutions offering uncompromised performance, finishes, and serviceability.



Lighting Quality in a Small Package

The X Series modules feature lumen output ranges from 750 to 1500 lumens, comparable to competing 3" and 4" fixtures in ceilings up to 10 feet. Tool-less field-changeable optics allow for ultimate flexibility in aiming a project.



DMF drivers are integrated into the light engine vs. the housing, and X Series housings have a unique trap door that provides post-install access to the splice box below the ceiling plane. Together these features allow for painless serviceability, unheard of in a 2" fixture.



A true breakthrough in the category, our patent-pending Precision Lock Collar eliminates the need to jump the housing collar and the over-cutting and drywall repair that jumping often creates with other small aperture fixtures. The Precision Lock Collar provides depth adjustment and secure fit, making flush-to-ceiling installation easy to achieve.



Deep die-cast aluminum trim options are meticulously engineered to provide unmatched precision and exceptionally easy installation.

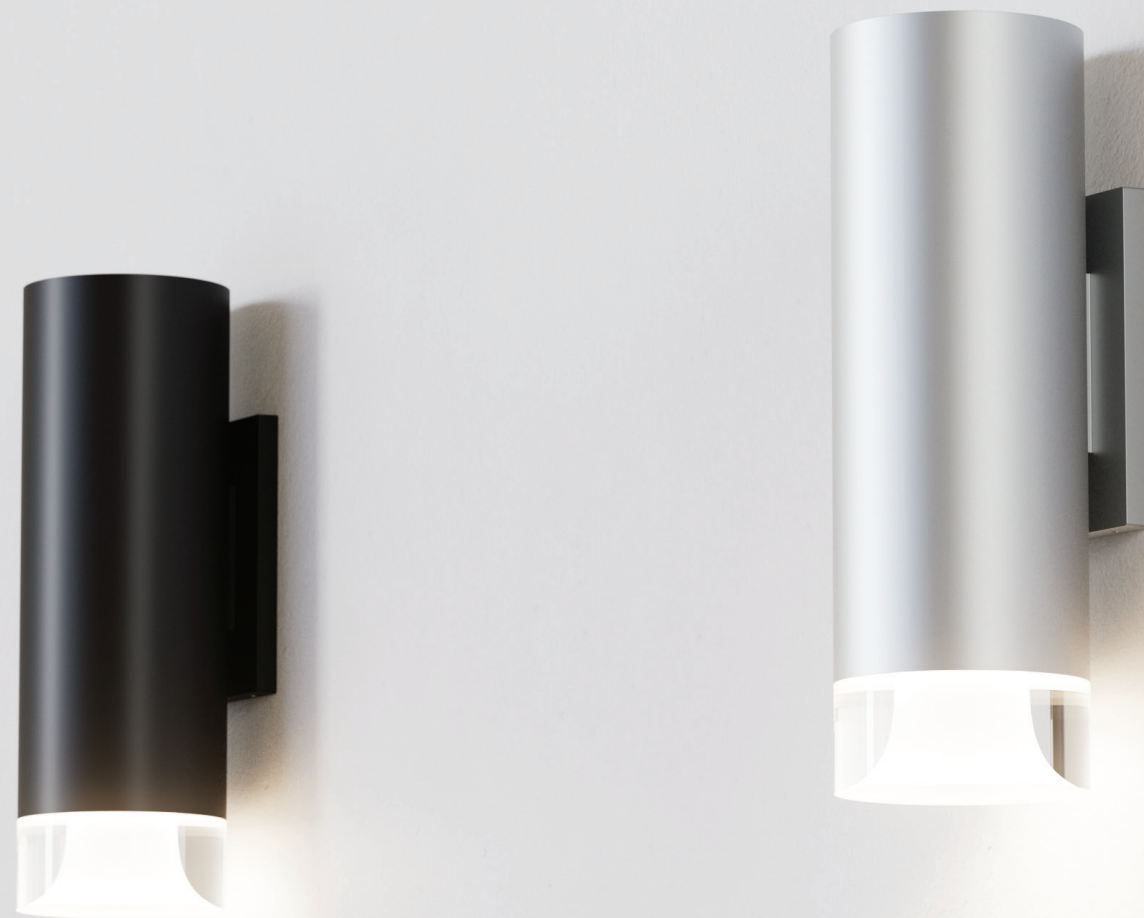




Small Aperture Cylinder

X Series Cylinders add pendant, surface mount, and wall mount solutions to your lighting toolkit. Field-changeable trims, decorative diffusers, snoot, and optics deliver uncompromised performance and serviceability with flexible distribution and aesthetics. X Series modules stay consistent, so you can count on the same light quality, color, and output from each cylinder.

Cylinders for Any Application



Suspension Options

Cord or stem suspension options, and both are field-cuttable to exact requirements.



ADA Compliant

The overall projection of the wall sconce from the surface of the wall is less than 4.0" making it ADA compliant, when installed at the proper height.



Uplight

Shadowless pendant uplight allows for direct and indirect lighting from a single cylinder.



Snoot

Channels light out of the cylinder and mitigates glare.



Decorative Trims

Finely crafted acrylic with transparent and frosted visual elements.



Junction Box Cover

Completes the cylinder's look in open ceiling applications.



Integrated Driver Technology

The integrated driver is a great example of how our process works. We wanted a smaller form factor and better reliability than what was available in the marketplace. With a lot of hard work, our engineers developed a driver that could be integrated into our light modules for ultimate compatibility and space efficiency. The result is enhanced quality of light - reliably delivered - without sacrificing performance, ease of installation, or serviceability. DMF modules, along with the DMF engineered optics and trims, are field-changeable.

	X Series 2" Downlight	X Series 2" Adjustable
APPLICATION	New Construction, Remodel	New Construction, Remodel
HOUSING	X Series	X Series
ADJUSTMENT	–	360° directional aim, 35° tilt
DELIVERED LUMENS	750 lm (9.5W), 1000 lm (12.5W), 1250 lm (14.3W), 1500 lm (16.5W)	750 lm (9.5W), 1000 lm (12.5W)
COLOR QUALITY	93+ CRI, 2-step SDCM	93+ CRI, 2-step SDCM
COLOR TEMPERATURE	2700K, 3000K, 3500K, 4000K	2700K, 3000K, 3500K, 4000K
DIMMING	0-10V 1%, TRIAC/ELV 1%, DALI–2 0.1%	0-10V 1%, TRIAC/ELV 1%, DALI–2 0.1%
WARM DIM	3000K–1800K	3000K–1800K
TUNABLE WHITE	4000K-1800K, 6500K–2700K	4000K-1800K, 6500K–2700K
BEAM SPREAD	25° Spot, 40° Flood, 60° Wide Flood, 60° x 10° Linear Spread	15° Narrow Spot, 25° Spot, 40° Flood, 60° x 10° Linear Spread
OPTIONS	-	-
INPUT VOLTAGE	120/277V	120/277V
STANDARDS	JA8 Title 24, UL Certified US·CA, ENERGY STAR®, Declare	JA8 Title 24, UL Certified US·CA, ENERGY STAR®, Declare
RATINGS	Wet Location	Damp Location
WARRANTY	5 years	5 years



Brilliance, Engineered

DMF is a modular, architectural lighting manufacturer of industry-leading luminaires known for flexibility, performance, and quality. Light is more than illumination; light defines the aesthetics, utility, and comfort of a space. So our team embodies more than engineering. We are system thinkers with investments in R&D for product innovations as well as continual product improvement.

Our family of products is designed to give you access to the right specification for almost any downlight, surface mount, pendant, or scone application. We aim to make our product offering as nuanced and creative as the lighting designs coming out of today's architectural design industry. And, when it comes time for install, DMF is known for easy install solutions, high quality, tireless customer service, and intelligent distribution.

**If you want lighting that's built better, built smarter,
DMF is the partner for you.**



DMF Lighting
1118 East 223rd Street, Carson, CA 90745
323.934.7779 | info@dmflighting.com
dmflighting.com

